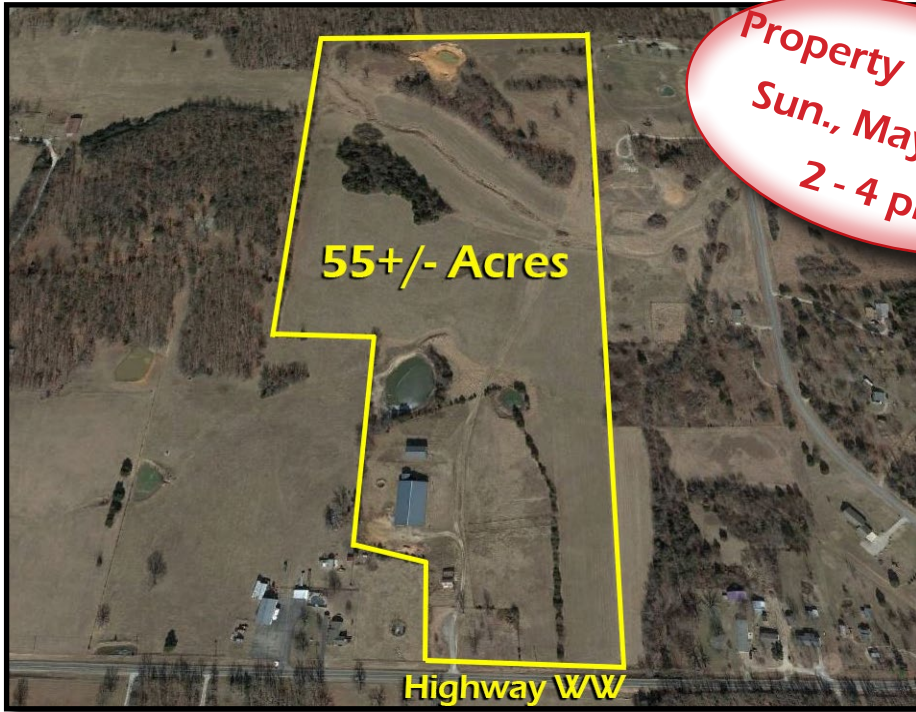


REAL ESTATE AUCTION

★ SUNDAY, MAY 21, 2017 @ 1 PM ★

16829 HIGHWAY WW, LEBANON, MO 65536



55+/- Fenced Acres ~ 3 Multi-Purpose Buildings ~ 3 Ponds

Must See Property Offers Limitless Possibilities



84' x 144' Wick Building

- Heated/Cooled Efficiency Apartment w/ Full Kitchen, Bathroom w/ Shower & W/D Hook-Ups
- 2 Wall Mounted Heating & Cooling Units in Apt.
- 60' x 144' Riding Arena & (17) 12' x 12' Stalls
- 2 People Entrances (One Covered) & 2 Overhead Doors

40' x 60' Wick Building

- Currently Used as Hay Storage ~ Great Warehouse Possibilities or Storage for Large Item Collections

Property Highlights

- Excellent Sites for Building Your Dream Home
- 3 Ponds ~ Largest Pond Behind Barn is Roughly 1/2 Ac. & Stocked w/ Catfish
- 25 +/- Ac. Planted w/ Hay - 1/2 Alfalfa, Orchard Grass & Rye & 1/2 Orchard Grass & Brohm
- Level to Gently Rolling Topography

No Manufactured / Mobile Homes

County: Laclede | Parcel ID No.: 06-9.2-31-000-000-007.02 | 2016 Taxes: \$484 | Zoning: Agricultural
Public Water by PWSD #1 | Sewer: Private Septic | All Electric Building | 200 Amp Circuit Breakers

Professional Real Estate Auctions By:

For Live Online Bidding Visit:
www.adamsauctions.com



Toll Free: 1-877-566-8751
ADAM JOKISCH
MOBILE # (618) 530-8751



Terms
\$10,000 Down Day of Sale
On Real Estate
Balance Due in 30 Days
6% Buyers Premium
Any Announcement Made
Day of Sale Takes Precedence
Over Printed Material
List subject to change
Without notice.
LIC # 044000169

The enclosed information was obtained from sources considered reliable, however, the auction company does not guarantee the accuracy of this information. Said information is subject to change availability or update without notice. Seller/landlord and auction company make no representation as to the environmental condition of the property and recommended that the purchaser/tenant obtain an independent investigation.