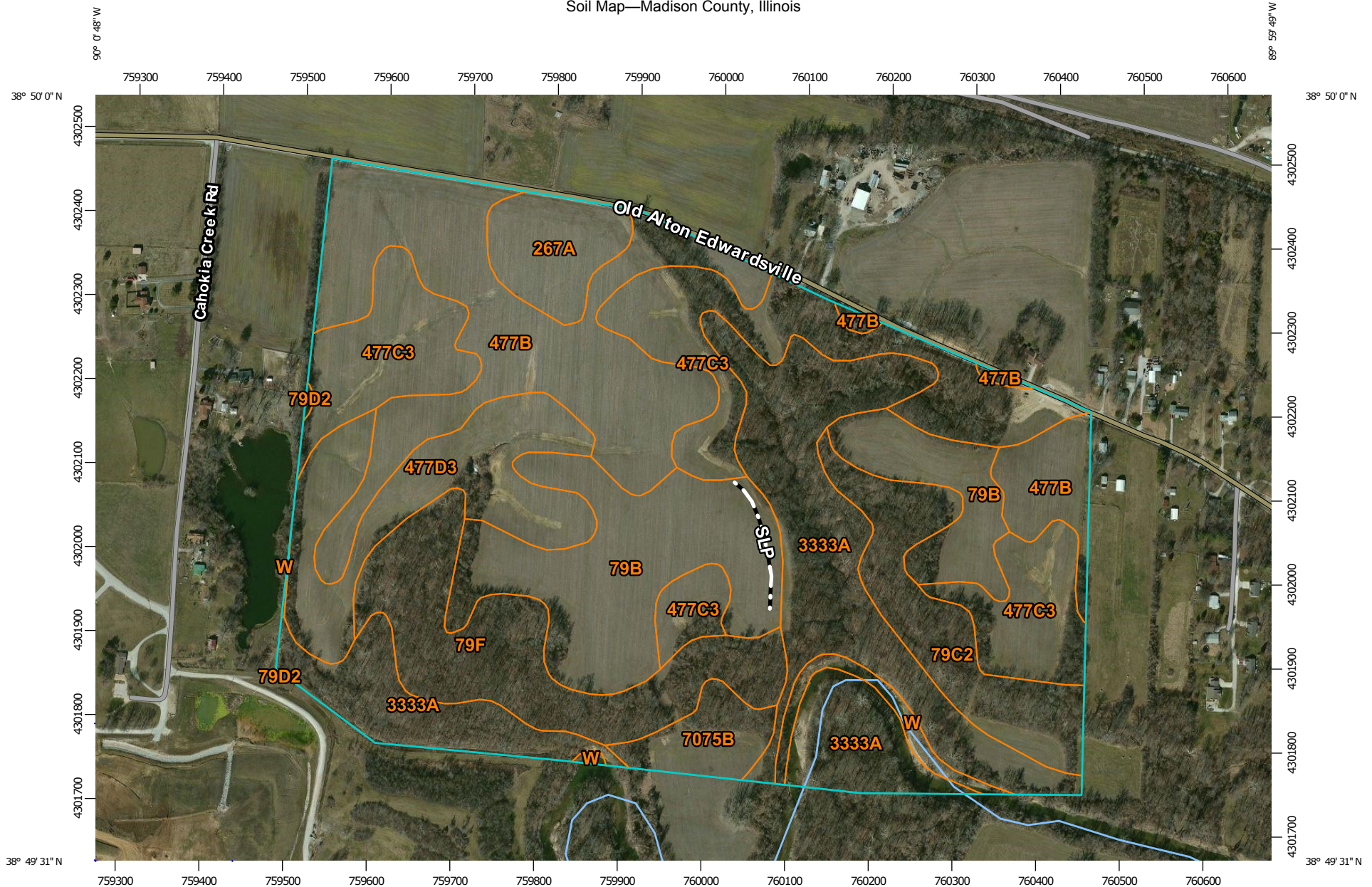


Soil Map—Madison County, Illinois



Map Scale: 1:6,420 if printed on A landscape (11" x 8.5") sheet.

0 50 100 200 300 Meters

0 300 600 1200 1800 Feet

Map projection: Web Mercator Corner coordinates: WGS84 Edge tics: UTM Zone 15N WGS84



## MAP LEGEND

### Area of Interest (AOI)

 Area of Interest (AOI)

### Soils

 Soil Map Unit Polygons

 Soil Map Unit Lines

 Soil Map Unit Points

### Special Point Features



Blowout



Borrow Pit



Clay Spot



Closed Depression



Gravel Pit



Gravelly Spot



Landfill



Lava Flow



Marsh or swamp



Mine or Quarry



Miscellaneous Water



Perennial Water



Rock Outcrop



Saline Spot



Sandy Spot



Severely Eroded Spot



Sinkhole



Slide or Slip



Sodic Spot



Spoil Area



Stony Spot



Very Stony Spot



Wet Spot



Other



Special Line Features

### Water Features



Streams and Canals

### Transportation



Rails



Interstate Highways



US Routes



Major Roads



Local Roads

### Background



Aerial Photography

## MAP INFORMATION

The soil surveys that comprise your AOI were mapped at 1:12,000.

Warning: Soil Map may not be valid at this scale.

Enlargement of maps beyond the scale of mapping can cause misunderstanding of the detail of mapping and accuracy of soil line placement. The maps do not show the small areas of contrasting soils that could have been shown at a more detailed scale.

Please rely on the bar scale on each map sheet for map measurements.

Source of Map: Natural Resources Conservation Service  
 Web Soil Survey URL: <http://websoilsurvey.nrcs.usda.gov>  
 Coordinate System: Web Mercator (EPSG:3857)

Maps from the Web Soil Survey are based on the Web Mercator projection, which preserves direction and shape but distorts distance and area. A projection that preserves area, such as the Albers equal-area conic projection, should be used if more accurate calculations of distance or area are required.

This product is generated from the USDA-NRCS certified data as of the version date(s) listed below.

Soil Survey Area: Madison County, Illinois  
 Survey Area Data: Version 9, Sep 13, 2014

Soil map units are labeled (as space allows) for map scales 1:50,000 or larger.

Date(s) aerial images were photographed: Feb 2, 2012—Mar 9, 2012

The orthophoto or other base map on which the soil lines were compiled and digitized probably differs from the background imagery displayed on these maps. As a result, some minor shifting of map unit boundaries may be evident.

## Map Unit Legend

Madison County, Illinois (IL119)			
Map Unit Symbol	Map Unit Name	Acres in AOI	Percent of AOI
79B	Menfro silt loam, 2 to 5 percent slopes	20.8	14.7%
79C2	Menfro silt loam, 5 to 10 percent slopes, eroded	8.7	6.2%
79D2	Menfro silt loam, 10 to 18 percent slopes, eroded	0.1	0.1%
79F	Menfro silt loam, 18 to 35 percent slopes	13.4	9.4%
267A	Caseyville silt loam, 0 to 2 percent slopes	4.6	3.3%
477B	Winfield silt loam, 2 to 5 percent slopes	25.7	18.1%
477C3	Winfield silty clay loam, 5 to 10 percent slopes, severely eroded	25.1	17.7%
477D3	Winfield silty clay loam, 10 to 18 percent slopes, severely eroded	11.7	8.3%
3333A	Wakeland silt loam, 0 to 2 percent slopes, frequently flooded	26.7	18.8%
7075B	Drury silt loam, 2 to 5 percent slopes, rarely flooded	3.2	2.3%
W	Water	1.8	1.3%
<b>Totals for Area of Interest</b>		<b>141.9</b>	<b>100.0%</b>