

ORDS GILLESPIE
TEXAS

PUBLIC RECORDS
E COUNTY, TEXAS

ORDS KENDALL
TEXAS

PUBLIC RECORDS
COUNTY, TEXAS

Sur. 358

U.S. HIGHWAY 87

W. HIEMANN

89
Sidney Afton

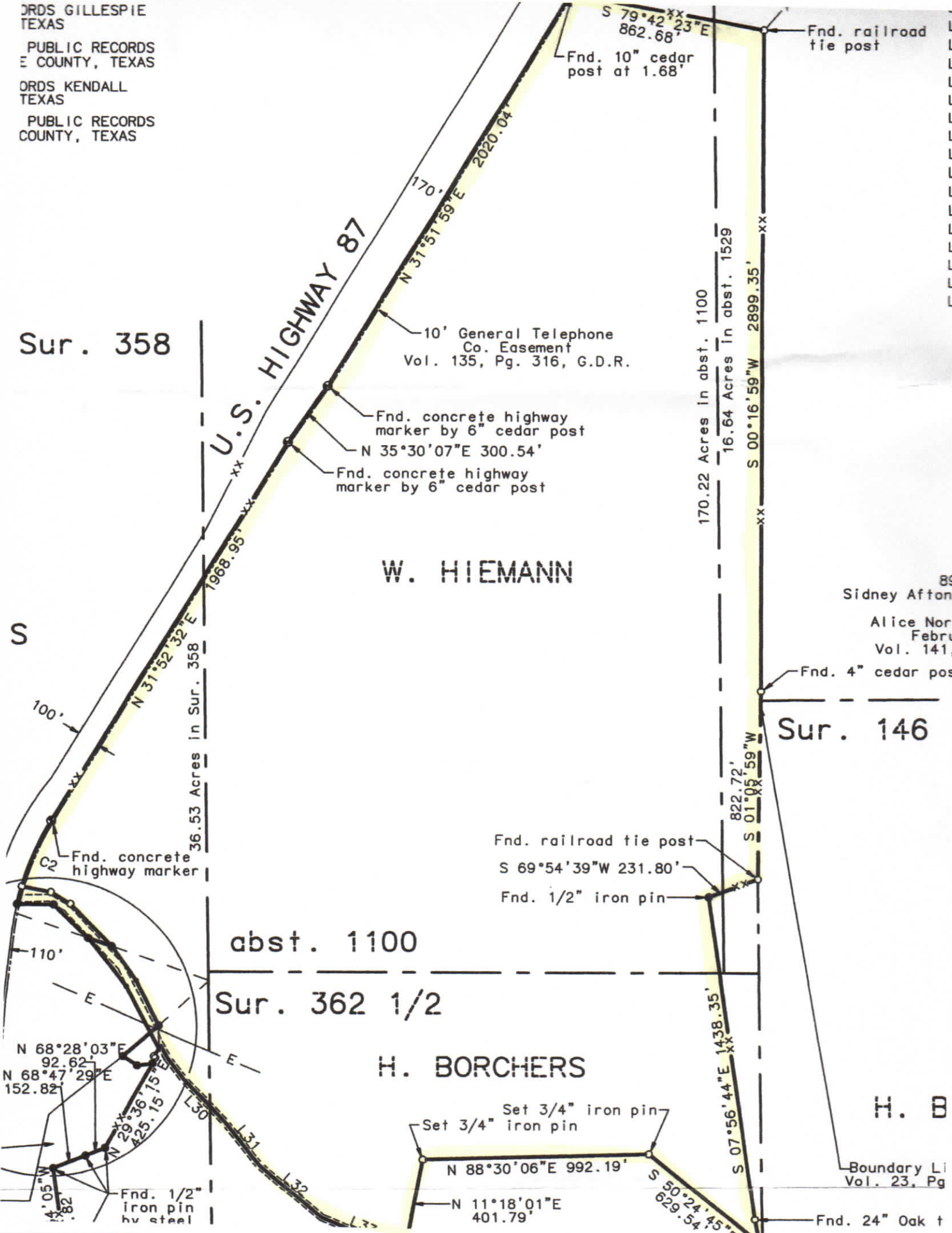
Alice Nori
Febru
Vol. 141,

Sur. 146

H. BORCHERS

H. B

Boundary Li
Vol. 23, Pg



Fnd. 10" cedar post at 1.68'

Fnd. railroad tie post

10' General Telephone Co. Easement
Vol. 135, Pg. 316, G.D.R.

Fnd. concrete highway marker by 6" cedar post
N 35°30'07"E 300.54'
Fnd. concrete highway marker by 6" cedar post

170.22 Acres in abst. 1100
16.64 Acres in abst. 1529

36.53 Acres in Sur. 358

Fnd. 4" cedar post

abst. 1100

Sur. 362 1/2

Fnd. railroad tie post
S 69°54'39"W 231.80'
Fnd. 1/2" iron pin

C2 Fnd. concrete highway marker

Set 3/4" iron pin
Set 3/4" iron pin

N 68°28'03"E 92.62'
N 68°47'29"E 152.82'
N 29°36'15"E 425.15'
N 05°W 14.05'
Fnd. 1/2" iron pin by steel

Fnd. 24" Oak t