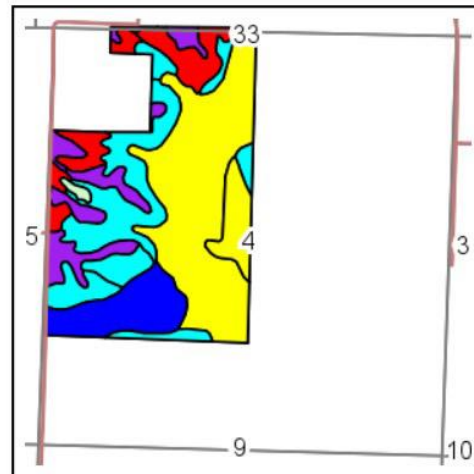
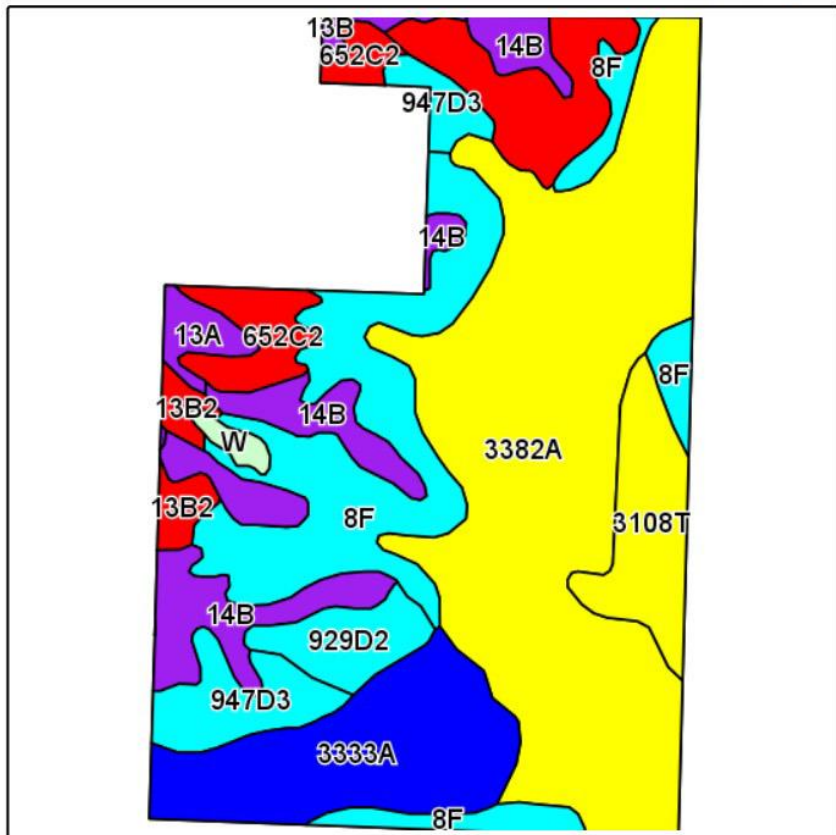
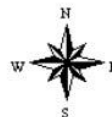


# Soils Map



State: **Illinois**  
 County: **Marion**  
 Location: **4-2N-4E**  
 Township: **luka**  
 Acres: **201.42**  
 Date: **10/15/2013**

Field borders provided by Farm Service Agency as of 5/21/2008.  
 Soils data provided by University of Illinois at Champaign-Urbana.



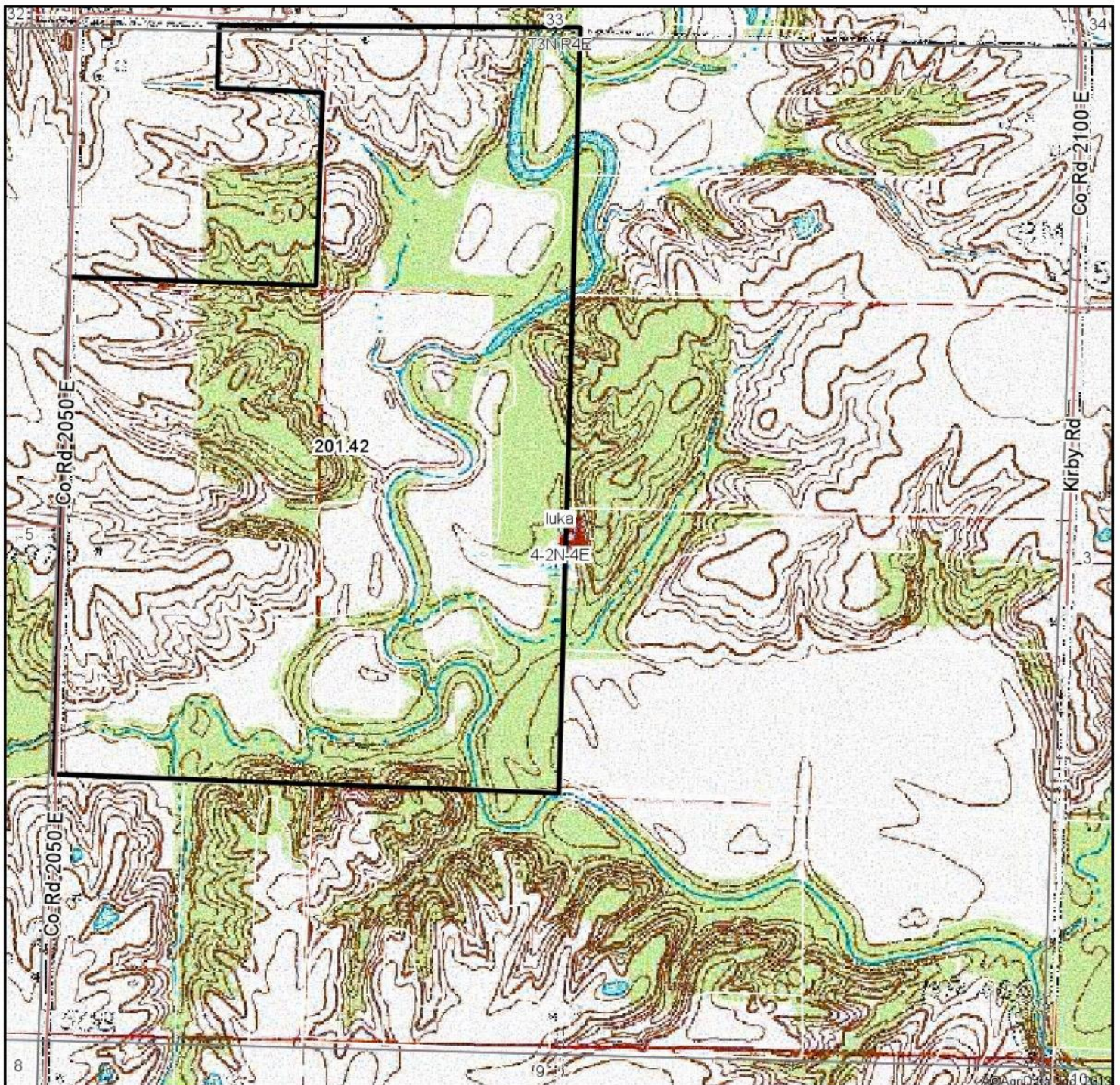
Maps provided by:



Code	Soil Description	Acres	Percent of field	Il. State Productivity Index Legend	Corn Bu/A	Soybeans Bu/A	Wheat Bu/A	Crop productivity index for optimum management
3382A	Belknap silt loam, 0 to 2 percent slopes, frequently flooded	75.00	37.2%		156	52	63	117
**8F	Hickory silt loam, 18 to 35 percent slopes	35.03	17.4%		**86	**29	**35	**65
3333A	Wakeland silt loam, 0 to 2 percent slopes, frequently flooded	22.24	11.0%		174	56	68	128
**14B	Ava silt loam, 2 to 5 percent slopes	15.31	7.6%		**134	**44	**54	**99
3108T	Bonnie silt loam, sodic, 0 to 2 percent slopes, frequently flooded	10.44	5.2%		149	49	59	111
**14C2	Ava silt loam, 5 to 10 percent slopes, eroded	10.19	5.1%		**122	**40	**50	**90
**947D3	Hickory-Passport clay loams, 10 to 18 percent slopes, severely eroded	9.52	4.7%		**109	**36	**45	**80
**652C2	Passport silt loam, 5 to 10 percent slopes, eroded	6.89	3.4%		**116	**39	**51	**88
**929D2	Ava-Hickory silt loams, 10 to 18 percent slopes, eroded	5.79	2.9%		**108	**36	**45	**82
**13B	Bluford silt loam, 2 to 5 percent slopes	3.85	1.9%		**135	**44	**54	**100
**13B2	Bluford silt loam, 2 to 5 percent slopes, eroded	3.26	1.6%		**129	**42	**52	**96
13A	Bluford silt loam, 0 to 2 percent slopes	2.72	1.4%		136	44	55	101
W	Water	1.18	0.6%					
<b>Weighted Average</b>					<b>135.1</b>	<b>44.7</b>	<b>54.5</b>	<b>100.8</b>

Table: Optimum Crop Productivity Ratings for Illinois Soil by K.R. Olson and J.M. Lang, Office of Research, ACES, University of Illinois at Champaign-Urbana. Version: 1/2/2012 Amended Table S2 B811 (Updated 1/10/2012)  
 Crop yields and productivity indices for optimum management (B811) are maintained at the following NRES web site: <http://soilproductivity.nres.illinois.edu/>  
 \*\* Indexes adjusted for slope and erosion according to Bulletin 811 Table S3

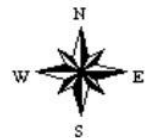
# Topography Map



map center: 38° 38' 32.28, 88° 45' 44.98

scale: 9899

**4-2N-4E**  
**Marion County**  
**Illinois**



10/15/2013

Maps provided by:



©AgriData, Inc. 2012  
www.AgriDataInc.com

Field borders provided by Farm Service Agency as of 5/21/2008. Aerial photography provided by Aerial Photography Field Office.