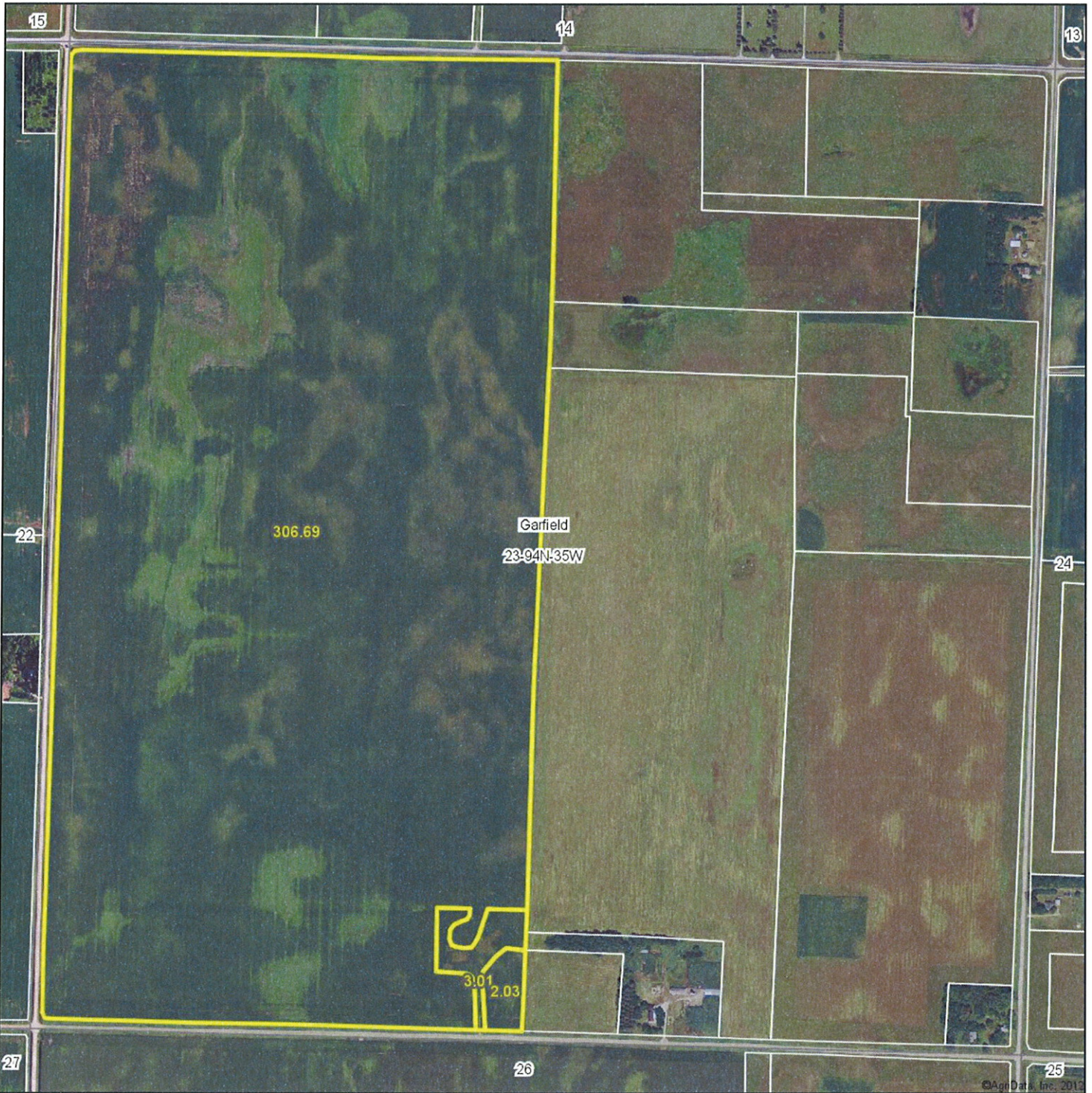


Aerial Map



MIDWEST LAND
712-262-3110 MANAGEMENT

Maps provided by:
 **surety**
CUSTOMIZED ONLINE MAPPING

©AgriData, Inc. 2012
www.AgriDataInc.com

23-94N-35W
Clay County
Iowa

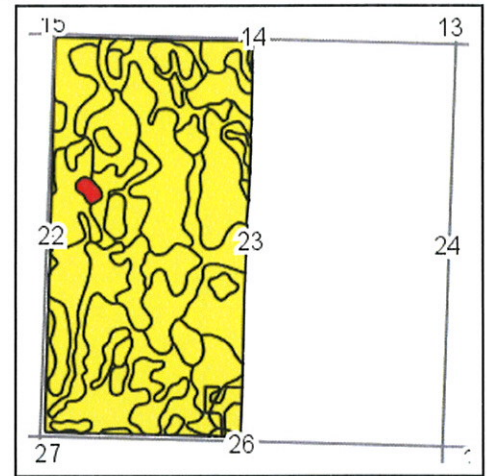
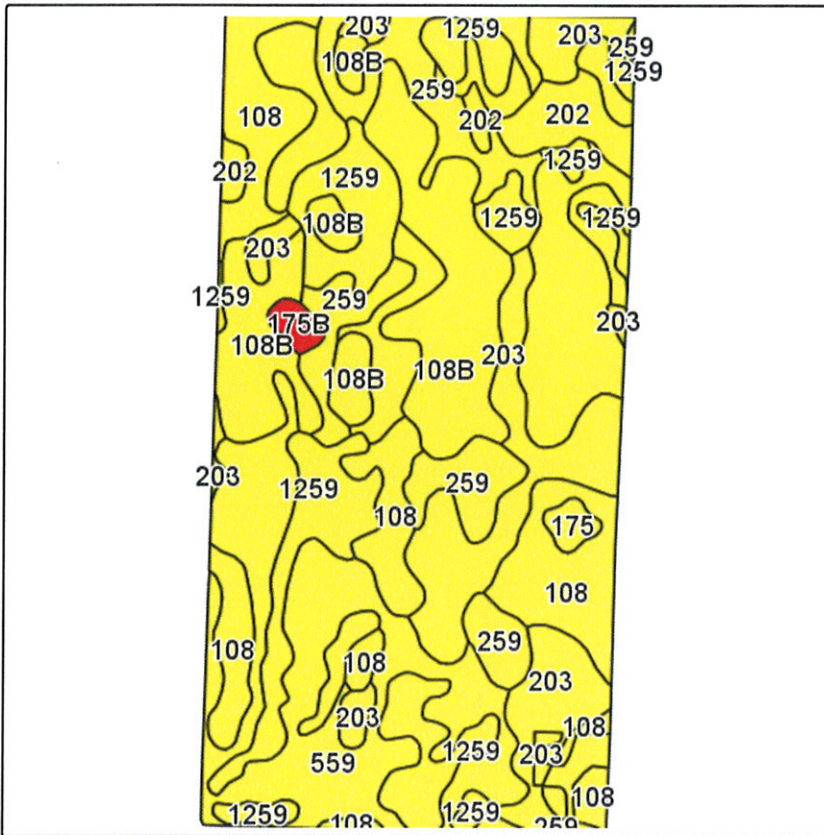
map center: 42° 56' 46.03, 94° 56' 36.99
scale: 8841



4/12/2013

Field borders provided by Farm Service Agency as of 5/21/2008. Aerial photography provided by Aerial Photography Field Office.

Soils Map-CSR(as of 1/21/12)



State: Iowa
 County: Clay
 Location: 23-94N-35W
 Township: Garfield
 Acres: 311.7
 Date: 4/12/2013

MIDWEST LAND
 & REAL ESTATE, INC
 712-262-3110 MANAGEMENT



Maps provided by:



©AgriData, Inc 2012
 www.AgriDataInc.com

Field borders provided by Farm Service Agency as of 5/21/2008.
 Soils data provided by USDA and NRCS.

Code	Soil Description	Acres	Percent of field	CSR Legend	Non-Irr Class	CSR*	Corn	Soybeans
108B	Wadena loam, 24 to 32 inches to sand and gravel, 2 to 5 percent slopes	73.8	23.6%		Ile	47	148	29
559	Talcot clay loam, 32 to 40 inches to sand and gravel, 0 to 2 percent slopes	51.2	16.4%		Ilw	65	173	36
203	Cylinder loam, 32 to 40 inches to sand and gravel, 0 to 2 percent slopes	48.6	15.6%		Ils	71	181	40
1259	Biscay clay loam, 32 to 40 inches to sand and gravel, depressional, 0 to 1 percent slopes	46	14.7%		Illw	49	151	33
108	Wadena loam, 24 to 32 inches to sand and gravel, 0 to 2 percent slopes	45	14.4%		Ils	52	155	30
259	Biscay clay loam, 32 to 40 inches to sand and gravel, 0 to 2 percent slopes	31.3	10.1%		Ilw	70	180	38
202	Cylinder loam, 24 to 32 inches to sand and gravel, 0 to 2 percent slopes	12.2	3.9%		Ils	60	166	34
175	Dickinson fine sandy loam, 0 to 2 percent slopes	1.8	0.6%		Ills	41	140	24
175B	Dickinson fine sandy loam, 2 to 5 percent slopes	1.8	0.6%		Ille	36	134	23
Weighted Average						57.4	162.4	33.6

Note: ALL soils information on this page is dated 1/21/2012

*CSR ratings will be available for a limited time to aid in the transition to CSR2.