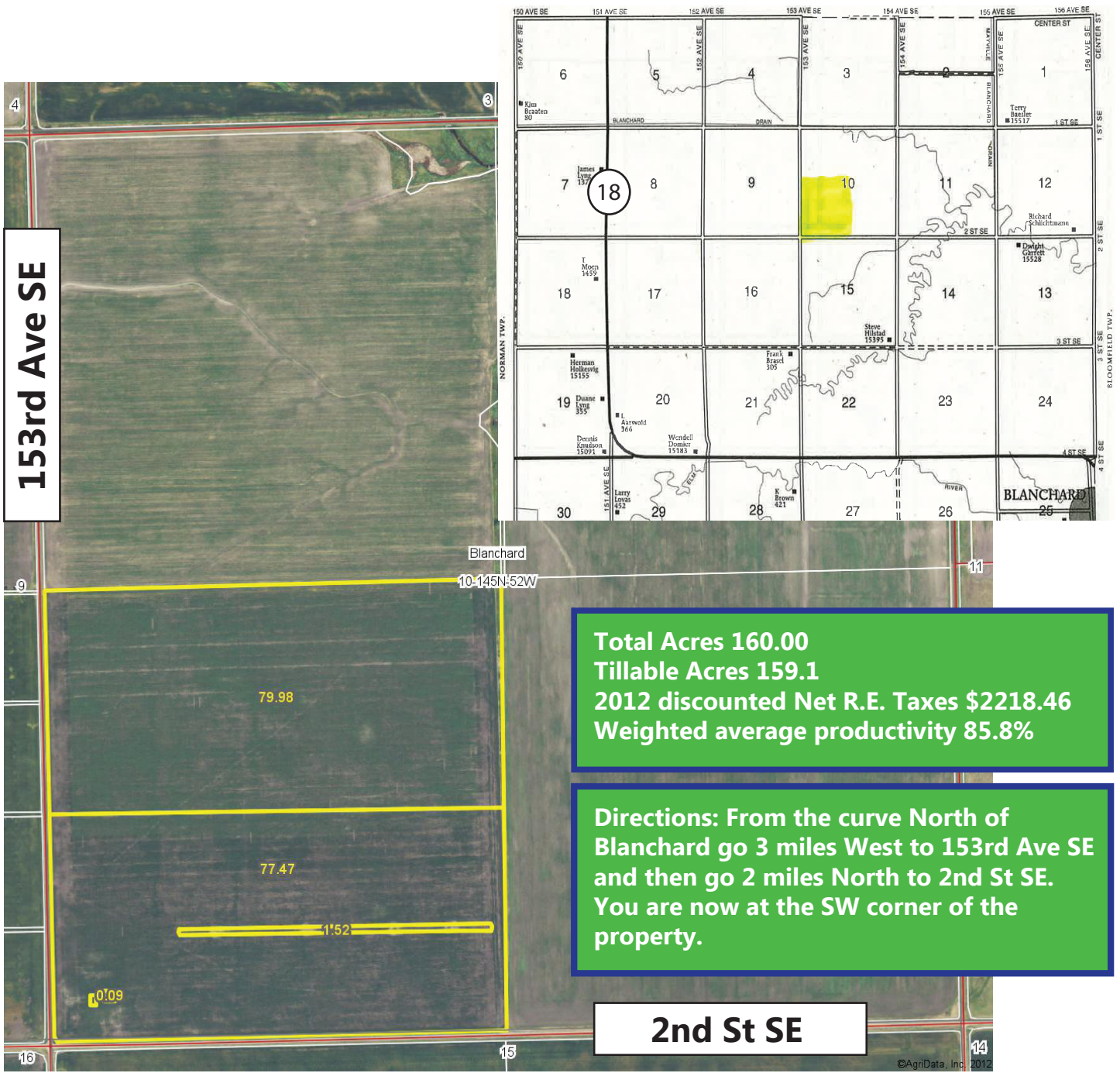


For Sale Trail County, North Dakota Farm Land

SW ¼ Section 10-145-52

Approximately 160.00 Acres



Total Acres 160.00
Tillable Acres 159.1
2012 discounted Net R.E. Taxes \$2218.46
Weighted average productivity 85.8%

Directions: From the curve North of Blanchard go 3 miles West to 153rd Ave SE and then go 2 miles North to 2nd St SE. You are now at the SW corner of the property.

2nd St SE



10-145N-52W
Trail County
North Dakota



*All information contained herein is believed to be true but should be verified to the buyer's satisfaction in case of error, typographical or otherwise. ALL information is subject to change without further notice.

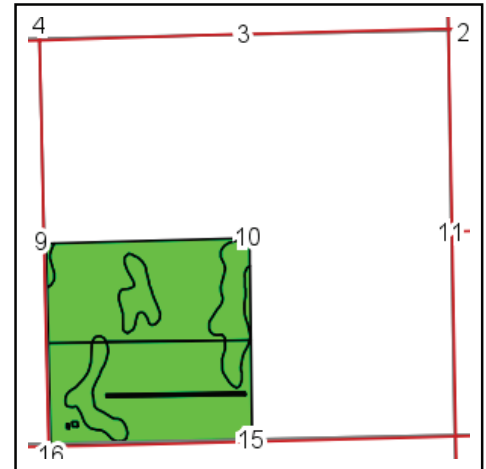
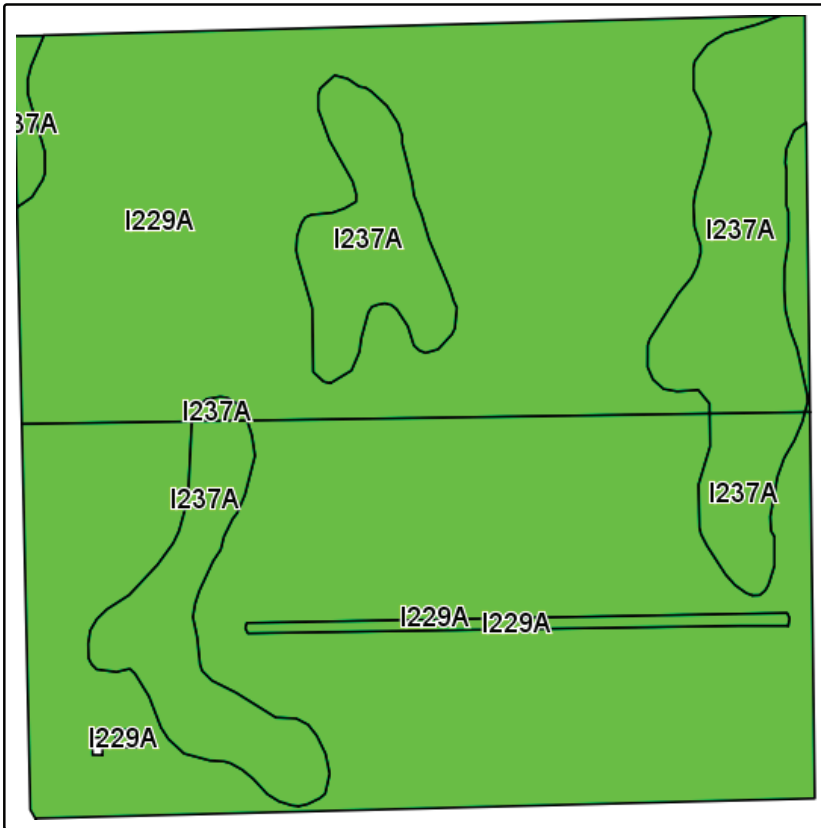
Steve D. Johnson
 Real Estate Broker
 Auctioneer License #976
 701-799-5213
 steve@johnsonauctionandrealty.com

2867 28th Ave S | Fargo, ND 58103
 www.johnsonauctionandrealty.com

For Sale Trail County, North Dakota Farm Land

SW ¼ Section 10-145-52

Approximately 160.00 Acres



State: **North Dakota**
 County: **Trail**
 Location: **10-145N-52W**
 Township: **Blanchard**
 Acres: **159.1**
 Date: **12/5/2012**



Field borders provided by Farm Service Agency as of 5/21/2008.
Soils data provided by USDA and NRCS.

Code	Soil Description	Acres	Percent of field	Non-Irr Class Legend	Non-Irr Class	Productivity Index
I229A	Fargo silty clay, 0 to 1 percent slopes	129.3	81.3%		IIw	86
I237A	Fargo-Enloe complex, 0 to 2 percent slopes	29.8	18.7%		IIw	85
Weighted Average						85.8



*All information contained herein is believed to be true but should be verified to the buyer's satisfaction in case of error, typographical or otherwise. All information is subject to change without further notice.

Steve D. Johnson
 Real Estate Broker
 Auctioneer License #976
 701-799-5213
 steve@johnsonauctionandrealty.com



2867 28th Ave S | Fargo, ND 58103
 www.johnsonauctionandrealty.com