

TERRY H. HAIRSTON REAL ESTATE

128 Whippoorwill Rd.
Brandon, MS 39042
601-992-2270

50 Acres of Investment Timberland In Rankin County, MS



\$95,000

(\$1,900/ac)

20 year old planted pine

Ready for First Thinning

Appraised Timber Value of
\$24,700



For more information, please contact:

Buddy Hairston

601-854-7001 office

601-672-6290 cell

hairstonforestry@bellsouth.net

TIMBER APPRAISAL

STOCKING TABLE

(NUMBER OF TREES AND VOLUME BY DIAMETER CLASS)

DBH #	PINE SAWTIMBER		OAK SAWTIMBER		GUM SAWTIMBER		POPLAR SAWTIMBER		TOTAL HARDWOOD SAWTIMBER	
	# TREES	VOLUME	# TREES	VOLUME	# TREES	VOLUME	# TREES	VOLUME	# TREES	VOLUME
14	120	11,870	10	940	0	0	5	625	15	1,565
16	40	6,205	0	0	5	1,075	0	0	5	1,075
18	15	3,430	5	1,125	0	0	0	0	5	1,125
20			5	1,475	0	0	0	0	5	1,475
22			5	1,850	0	0	0	0	5	1,850
24			5	2,295	0	0	0	0	5	2,295
T	175	21,505	30	7,685	5	1,075	5	625	40	9,385

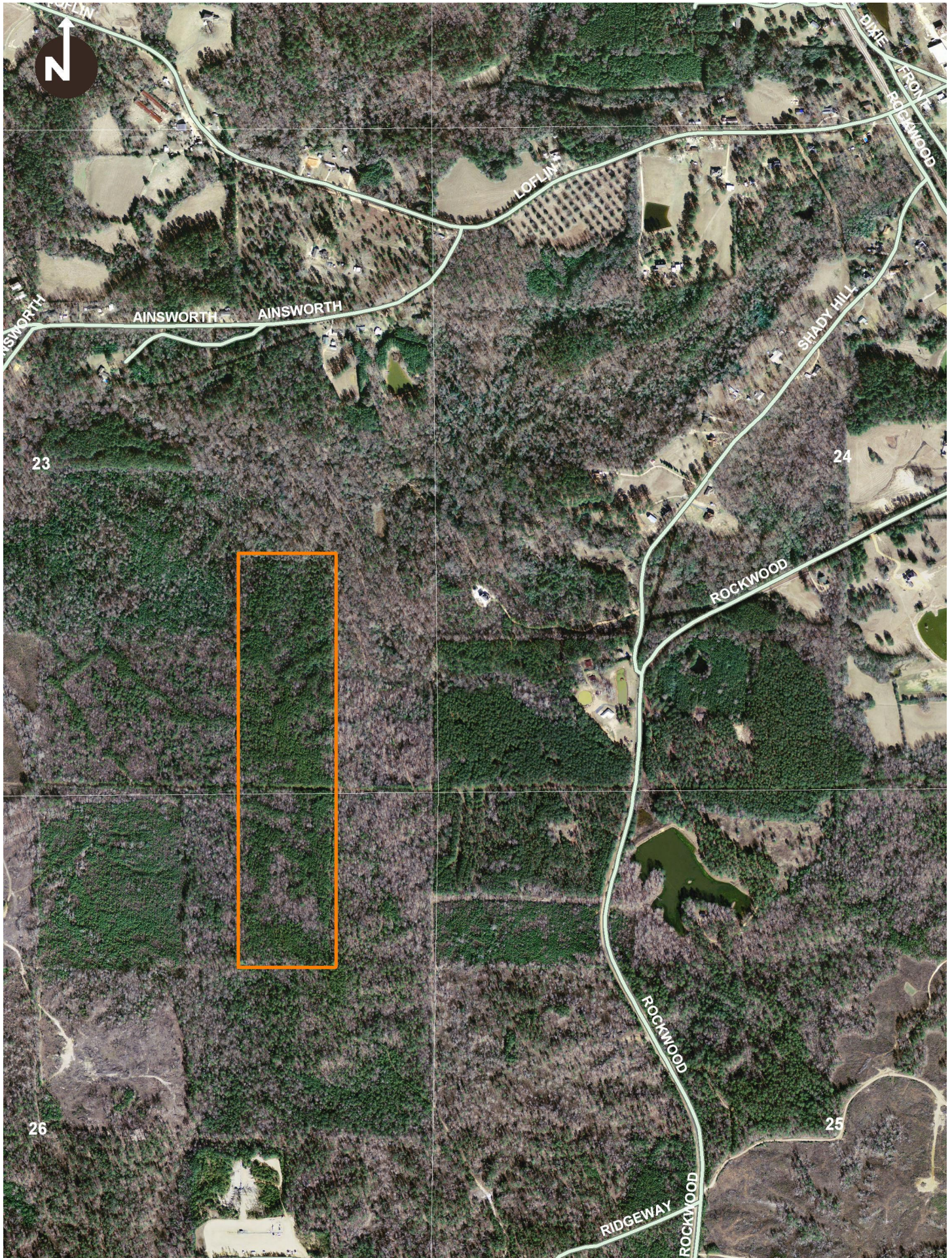
DBH #	PINE CHIP-N-SAW		PINE PULPWOOD		HARDWOOD PULPWOOD	
	# TREES	VOLUME	# TREES	VOLUME	# TREES	VOLUME
6			1,295	161.3	585	54.2
8			2,005	628.7	480	109.9
10	1,225	604.1	95	46.9	200	73.7
12	420	302.8	15	10.7	125	68.4
14			0	0.0	60	48.4
16+			0	0.0	0	0.0
T	1,645	906.9	3,370	847.6	1,450	354.6

VALUATION

PRODUCT	VOLUME	PRICE PER UNIT	VALUE
PINE SAWTIMBER	21,505 MBF	\$175 / MBF	= \$3,763.38
PINE CHIP-N-SAW	906.9 TONS	\$12 / TON	= \$10,882.80
HARDWOOD SAWTIMBER	9,385 MBF	\$200 / MBF	= \$1,877.00
PINE PULPWOOD	847.6 TONS	\$8 / TON	= \$6,780.80
HARDWOOD PULPWOOD	354.6 TONS	\$4 / TON	= \$1,418.40
TOTAL TIMBER VALUE:			\$24,722.38

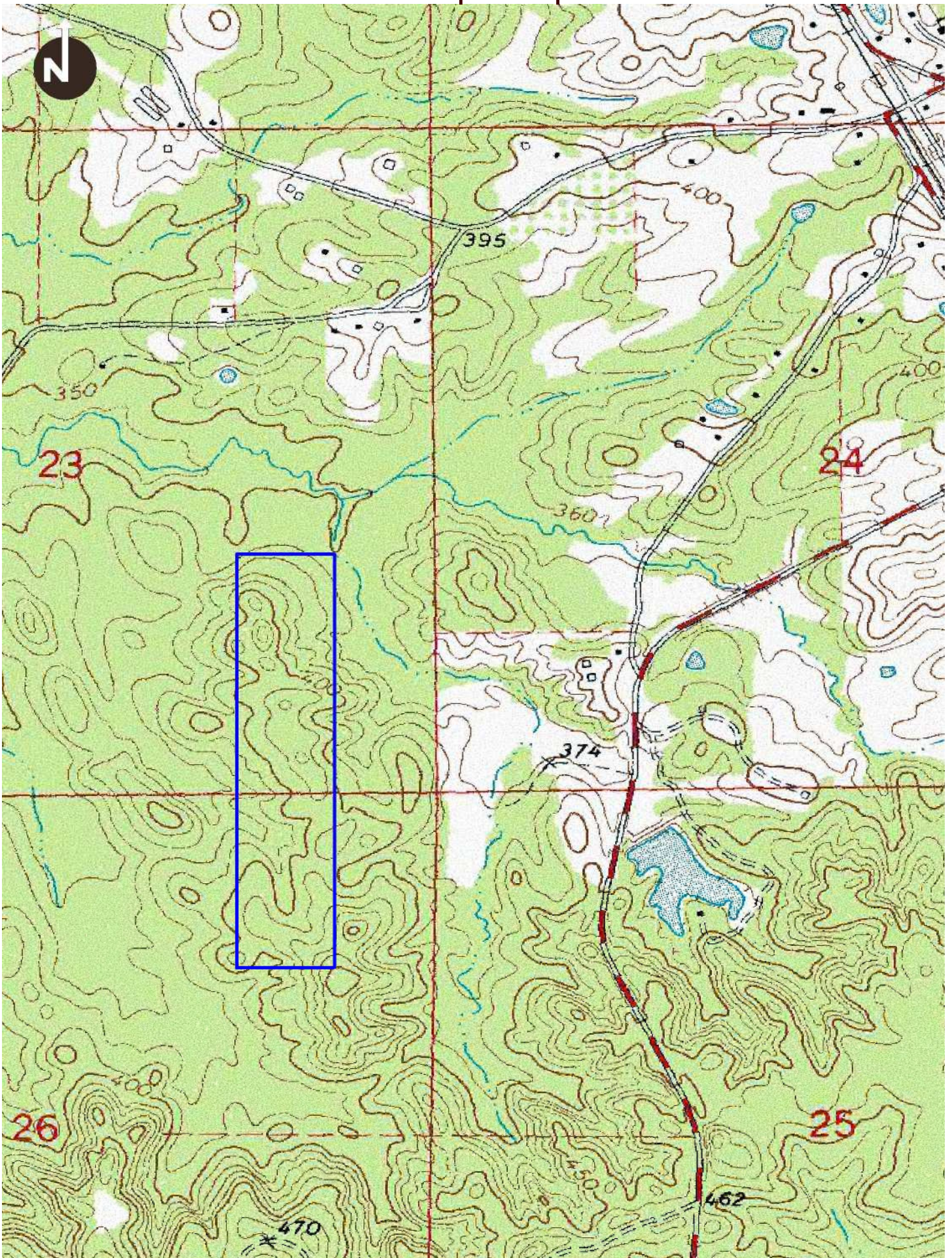
This timber appraisal was completed on 8/23/2011 and consisted of a 20% sample cruise.

All sawtimber volumes are given in board feet.
All chip-n-saw and pulpwood volumes are given in standard tons.



Topo Map

Tract Name: Stone



Location Map

