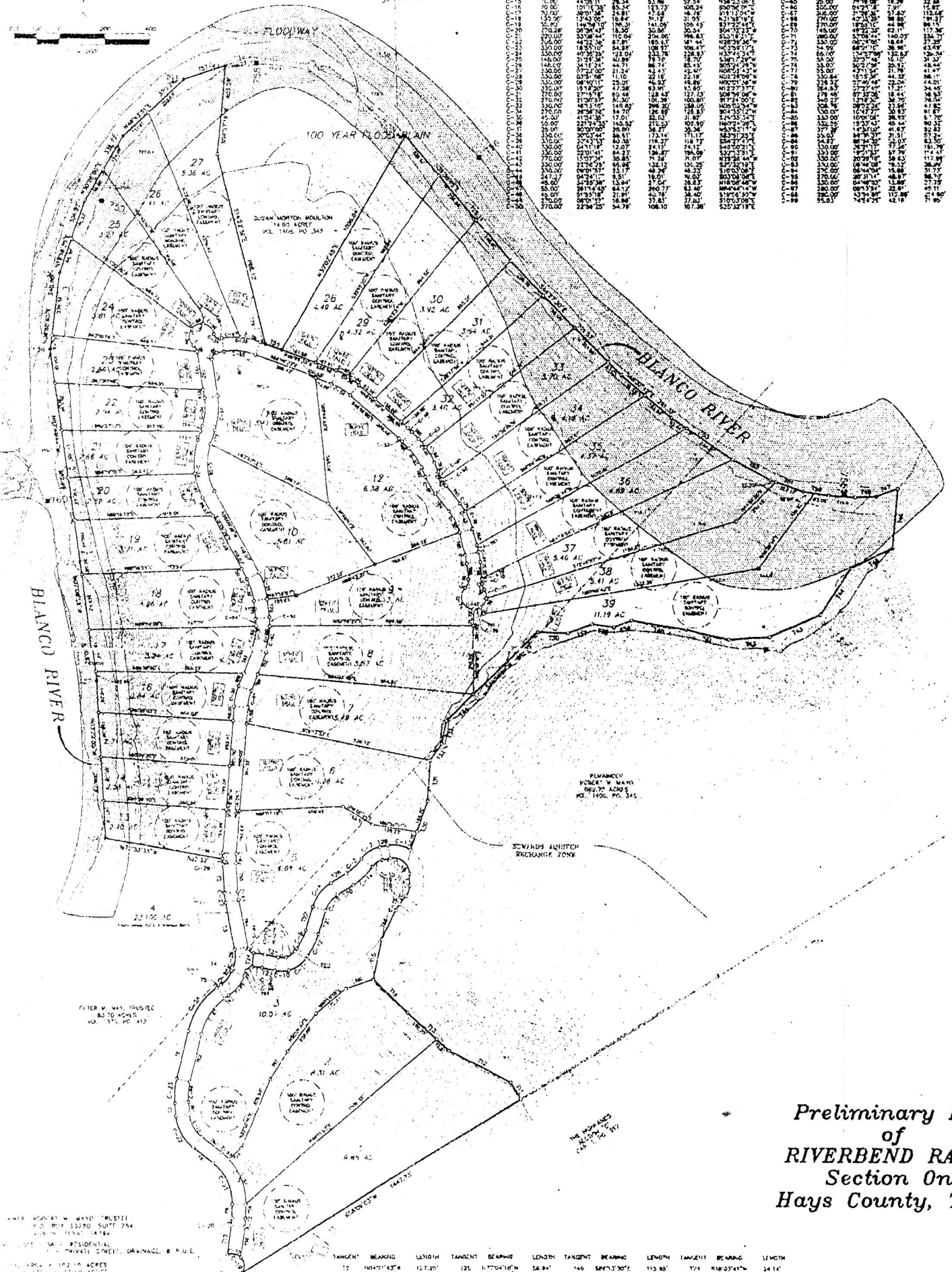




CURVE	RADIUS	DELTA	TANGENT	LENGTH	CHORD	BEARING	CURVE	RADIUS	DELTA	TANGENT	LENGTH	CHORD	BEARING
C-01	130.00	48.72	86.68	105.71	102.37	87°33'10" E	C-01	130.00	15.07	14.81	87.11	86.86	87°33'10" E
C-02	130.00	41.95	82.84	102.03	97.34	84°17'50" E	C-02	130.00	22.94	22.59	87.14	86.89	84°17'50" E
C-03	720.00	217.60	428.77	528.77	477.59	84°17'50" E	C-03	720.00	64.71	63.87	87.14	86.89	84°17'50" E
C-04	183.00	61.30	118.27	130.43	127.59	81°33'10" E	C-04	183.00	20.43	20.37	87.14	86.89	81°33'10" E
C-05	70.00	24.67	46.48	50.44	48.38	81°33'10" E	C-05	70.00	7.57	7.50	87.14	86.89	81°33'10" E
C-06	70.00	25.77	48.38	52.34	50.25	82°57'50" E	C-06	70.00	8.68	8.61	87.14	86.89	82°57'50" E
C-07	130.00	45.94	86.70	100.83	96.88	82°57'50" E	C-07	130.00	14.75	14.68	87.14	86.89	82°57'50" E
C-08	130.00	49.71	91.74	108.85	104.15	82°57'50" E	C-08	130.00	18.52	18.45	87.14	86.89	82°57'50" E
C-09	130.00	54.48	98.85	118.87	113.87	82°57'50" E	C-09	130.00	23.29	23.22	87.14	86.89	82°57'50" E
C-10	130.00	59.25	108.87	132.87	127.87	82°57'50" E	C-10	130.00	28.06	28.00	87.14	86.89	82°57'50" E
C-11	130.00	64.02	121.74	150.87	145.87	82°57'50" E	C-11	130.00	32.83	32.77	87.14	86.89	82°57'50" E
C-12	130.00	68.79	137.61	172.87	167.87	82°57'50" E	C-12	130.00	37.60	37.54	87.14	86.89	82°57'50" E
C-13	130.00	73.56	156.48	198.87	193.87	82°57'50" E	C-13	130.00	42.37	42.31	87.14	86.89	82°57'50" E
C-14	130.00	78.33	178.35	230.87	225.87	82°57'50" E	C-14	130.00	47.14	47.08	87.14	86.89	82°57'50" E
C-15	130.00	83.10	204.22	268.87	263.87	82°57'50" E	C-15	130.00	51.91	51.85	87.14	86.89	82°57'50" E
C-16	130.00	87.87	234.09	314.87	309.87	82°57'50" E	C-16	130.00	56.68	56.62	87.14	86.89	82°57'50" E
C-17	130.00	92.64	267.96	368.87	363.87	82°57'50" E	C-17	130.00	61.45	61.39	87.14	86.89	82°57'50" E
C-18	130.00	97.41	306.83	430.87	425.87	82°57'50" E	C-18	130.00	66.22	66.16	87.14	86.89	82°57'50" E
C-19	130.00	102.18	351.70	500.87	495.87	82°57'50" E	C-19	130.00	70.99	70.93	87.14	86.89	82°57'50" E
C-20	130.00	106.95	403.57	578.87	573.87	82°57'50" E	C-20	130.00	75.76	75.70	87.14	86.89	82°57'50" E
C-21	130.00	111.72	463.44	674.87	669.87	82°57'50" E	C-21	130.00	80.53	80.47	87.14	86.89	82°57'50" E
C-22	130.00	116.49	531.31	788.87	783.87	82°57'50" E	C-22	130.00	85.30	85.24	87.14	86.89	82°57'50" E
C-23	130.00	121.26	607.18	930.87	925.87	82°57'50" E	C-23	130.00	90.07	89.91	87.14	86.89	82°57'50" E
C-24	130.00	126.03	691.05	1100.87	1095.87	82°57'50" E	C-24	130.00	94.84	94.78	87.14	86.89	82°57'50" E
C-25	130.00	130.80	782.92	1300.87	1295.87	82°57'50" E	C-25	130.00	99.61	99.55	87.14	86.89	82°57'50" E
C-26	130.00	135.57	882.79	1530.87	1525.87	82°57'50" E	C-26	130.00	104.38	104.32	87.14	86.89	82°57'50" E
C-27	130.00	140.34	990.66	1790.87	1785.87	82°57'50" E	C-27	130.00	109.15	109.09	87.14	86.89	82°57'50" E
C-28	130.00	145.11	1106.53	2080.87	2075.87	82°57'50" E	C-28	130.00	113.92	113.86	87.14	86.89	82°57'50" E
C-29	130.00	149.88	1230.40	2400.87	2395.87	82°57'50" E	C-29	130.00	118.69	118.63	87.14	86.89	82°57'50" E
C-30	130.00	154.65	1362.27	2750.87	2745.87	82°57'50" E	C-30	130.00	123.46	123.40	87.14	86.89	82°57'50" E
C-31	130.00	159.42	1502.14	3230.87	3225.87	82°57'50" E	C-31	130.00	128.23	128.17	87.14	86.89	82°57'50" E
C-32	130.00	164.19	1649.01	3840.87	3835.87	82°57'50" E	C-32	130.00	133.00	132.94	87.14	86.89	82°57'50" E
C-33	130.00	168.96	1802.88	4580.87	4575.87	82°57'50" E	C-33	130.00	137.77	137.71	87.14	86.89	82°57'50" E
C-34	130.00	173.73	1963.75	5450.87	5445.87	82°57'50" E	C-34	130.00	142.54	142.48	87.14	86.89	82°57'50" E
C-35	130.00	178.50	2131.62	6450.87	6445.87	82°57'50" E	C-35	130.00	147.31	147.25	87.14	86.89	82°57'50" E
C-36	130.00	183.27	2306.49	7580.87	7575.87	82°57'50" E	C-36	130.00	152.08	152.02	87.14	86.89	82°57'50" E
C-37	130.00	188.04	2488.36	8840.87	8835.87	82°57'50" E	C-37	130.00	156.85	156.79	87.14	86.89	82°57'50" E
C-38	130.00	192.81	2677.23	10230.87	10225.87	82°57'50" E	C-38	130.00	161.62	161.56	87.14	86.89	82°57'50" E
C-39	130.00	197.58	2873.10	11750.87	11745.87	82°57'50" E	C-39	130.00	166.39	166.33	87.14	86.89	82°57'50" E
C-40	130.00	202.35	3076.97	13400.87	13395.87	82°57'50" E	C-40	130.00	171.16	171.10	87.14	86.89	82°57'50" E
C-41	130.00	207.12	3288.84	15180.87	15175.87	82°57'50" E	C-41	130.00	175.93	175.87	87.14	86.89	82°57'50" E
C-42	130.00	211.89	3508.71	17090.87	17085.87	82°57'50" E	C-42	130.00	180.70	180.64	87.14	86.89	82°57'50" E
C-43	130.00	216.66	3736.58	19130.87	19125.87	82°57'50" E	C-43	130.00	185.47	185.41	87.14	86.89	82°57'50" E
C-44	130.00	221.43	3972.45	21300.87	21295.87	82°57'50" E	C-44	130.00	190.24	190.18	87.14	86.89	82°57'50" E
C-45	130.00	226.20	4216.32	23600.87	23595.87	82°57'50" E	C-45	130.00	195.01	194.95	87.14	86.89	82°57'50" E
C-46	130.00	230.97	4468.19	26030.87	26025.87	82°57'50" E	C-46	130.00	199.78	199.72	87.14	86.89	82°57'50" E
C-47	130.00	235.74	4728.06	28590.87	28585.87	82°57'50" E	C-47	130.00	204.55	204.49	87.14	86.89	82°57'50" E
C-48	130.00	240.51	5005.93	32280.87	32275.87	82°57'50" E	C-48	130.00	209.32	209.26	87.14	86.89	82°57'50" E
C-49	130.00	245.28	5291.80	37110.87	37105.87	82°57'50" E	C-49	130.00	214.09	214.03	87.14	86.89	82°57'50" E
C-50	130.00	250.05	5585.67	43080.87	43075.87	82°57'50" E	C-50	130.00	218.86	218.80	87.14	86.89	82°57'50" E



Preliminary Plat
of
RIVERBEND RANCH
Section One
Hays County, Texas

LAND SURVEYORS
DUSTAN WORTON MOLLATE
1488 S. 14TH ST. SUITE 204
WACO, TEXAS 76798
PETER W. WATTS TRUSTEE
8370 ACRES
NO. 1492, PLS. 312

TANGENT	BEARING	LENGTH	TANGENT	BEARING	LENGTH	TANGENT	BEARING	LENGTH	TANGENT	BEARING	LENGTH
12	N44°14'16" E	107.20'	125	N77°34'16" W	24.84'	146	S89°13'30" E	115.80'	174	S16°33'41" W	24.14'

LEGAL DESCRIPTION OF THE LANDS SHOWN ON THIS PLAT
AS SET FORTH IN THE INSTRUMENTS REFERRED TO IN THE
MARGINS OF THIS PLAT, TOGETHER WITH THE BEARINGS AND
LENGTHS OF THE LINES THEREON, AND THE AREAS OF THE
PARCELS THEREON, AS SHOWN ON THIS PLAT.