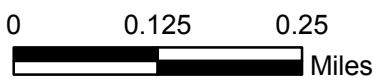
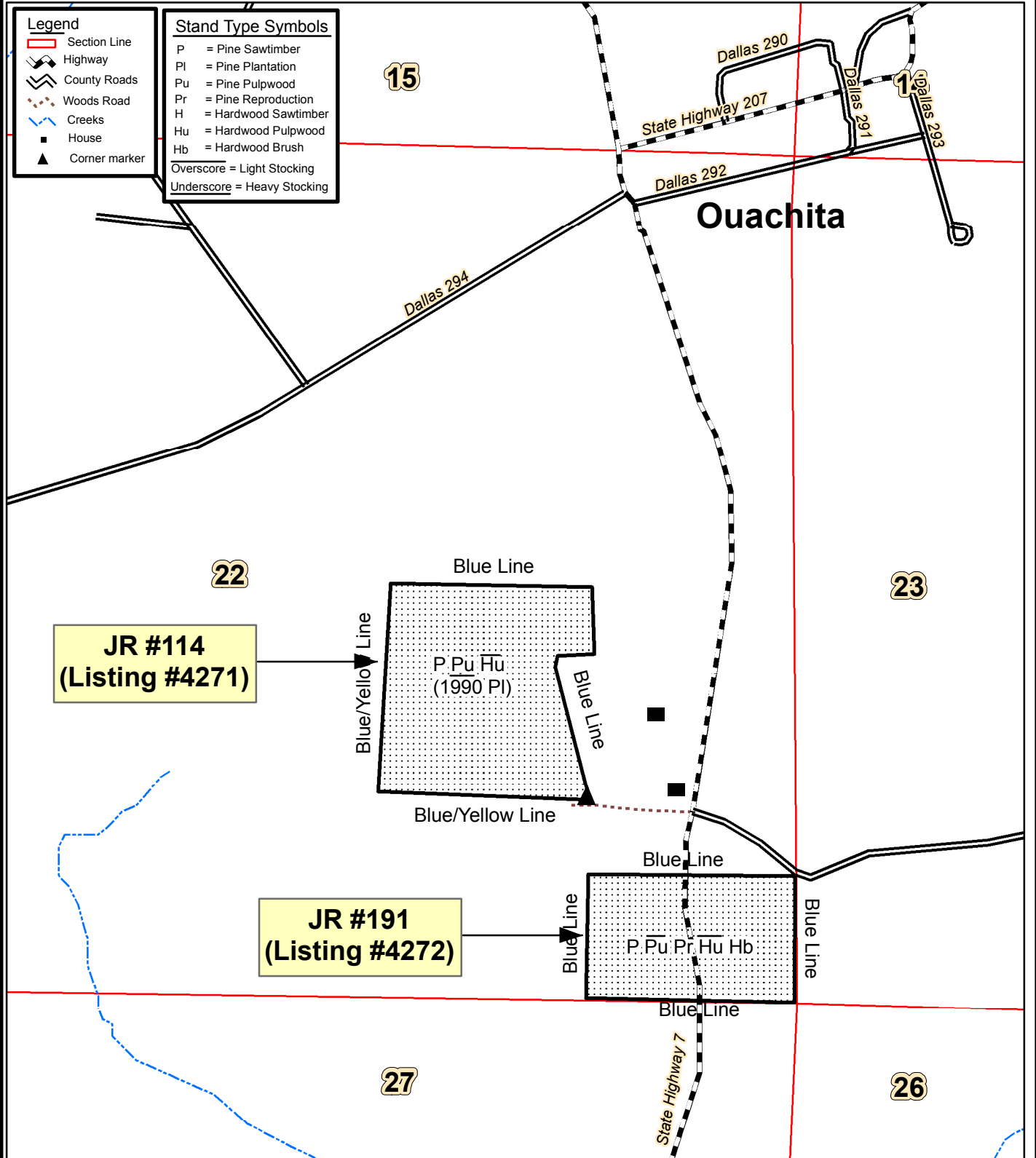


NOTICE OF LAND SALE

JR #114 Tract (Listing #4271): Pt. NW<sup>1</sup>/<sub>4</sub> of SE<sup>1</sup>/<sub>4</sub>, Sec. 22, T10S, R17W, containing 36 acres, more or less

JR #191 (Listing #4272): Pt. SE<sup>1</sup>/<sub>4</sub> of SE<sup>1</sup>/<sub>4</sub>, Sec. 22, T10S, R17W, containing 24.7 acres, more or less

Dallas County, Arkansas



Created: June, 2011  
By: JDT

