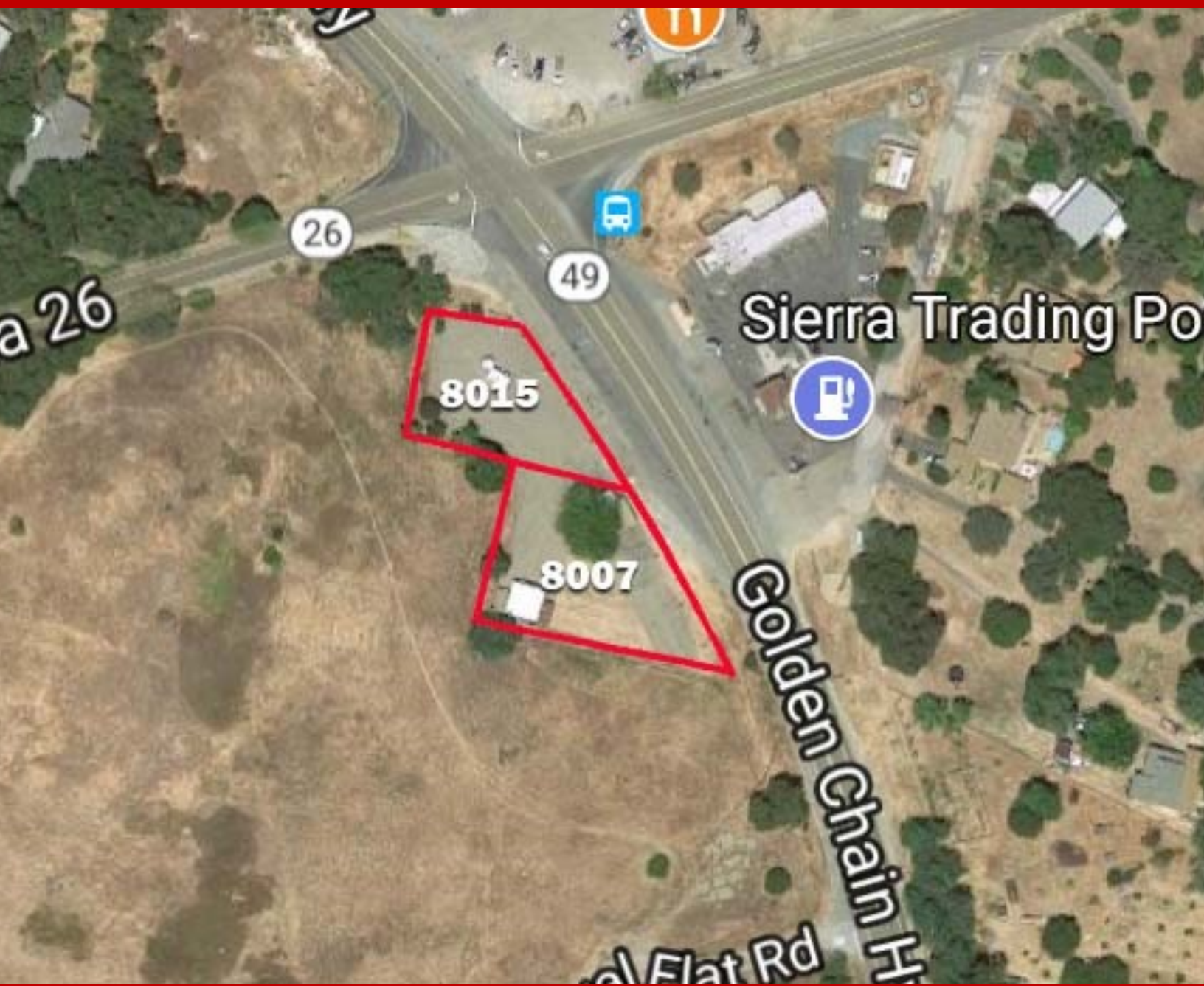


1/2 Acre Commercial Land w/ Office — \$249,990

8007-8015 Highway 49, Mokelumne Hill, CA 95245



This sale includes 8007 and 8015 Highway 49, Mokelumne Hill, two parcels totaling 1/2 an acre with a small office building, garage, and a storage room. Located near busy intersection of Highways 26 and 49. Zoned C-2 and can be used for car lot, auto repair, tire shop, and other commercial uses.

Office: (209) 226-9646 | Fax: (209) 226-9654 | 1739 Crows Landing Rd, Ste F | Modesto, CA 95358

RICARDO GIL JR, BROKER

Email: rgiljr@gilsre.com

BRE Lic No. 01800755

Commercial real estate services, including sales, leasing and property management. For more info, visit www.gilsre.com.

(209) 226-9649