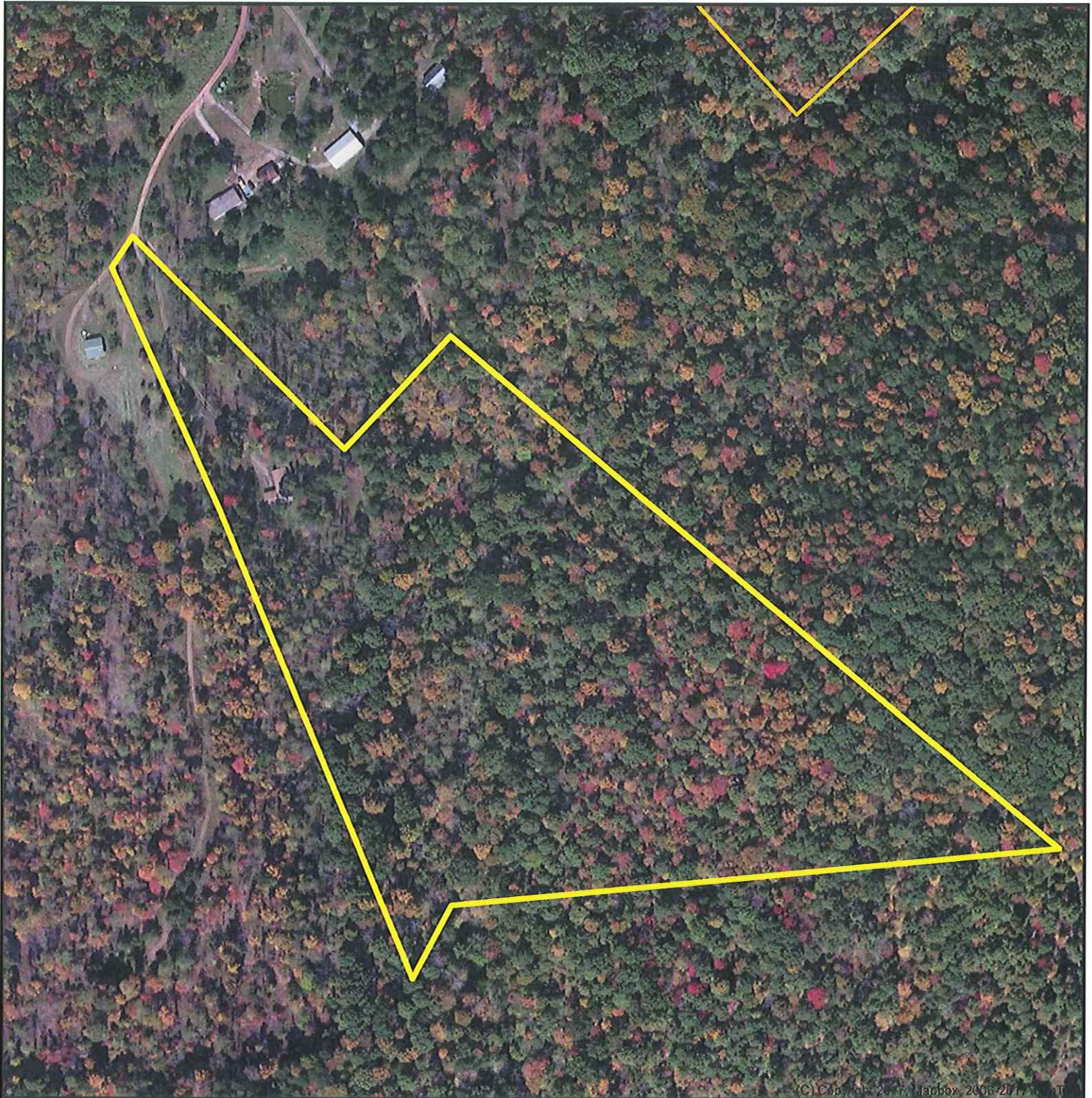




20.29 ACRES +/- RITCHIE COUNTY, WV.

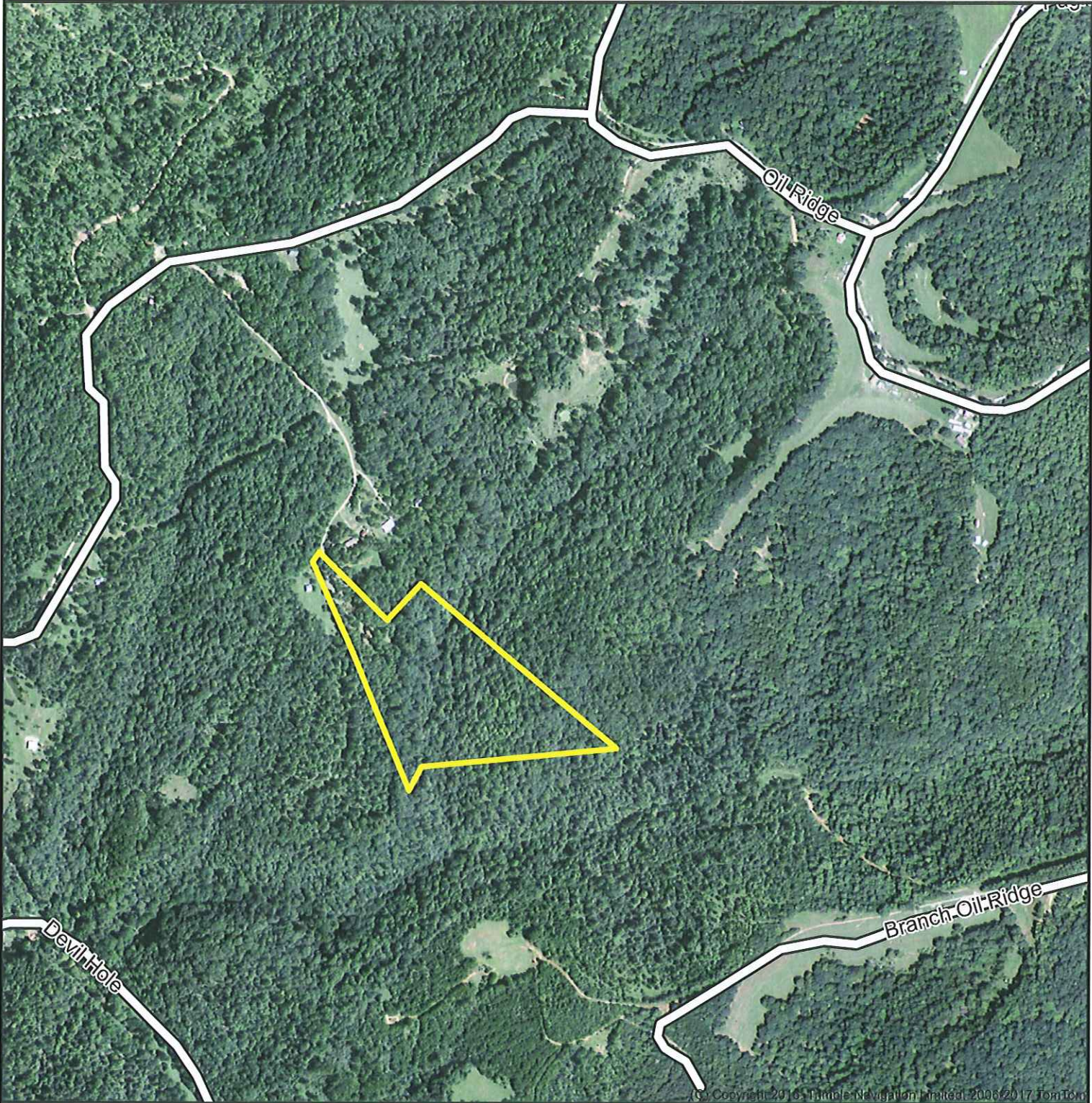


(C) Copyright 2017, Mapbox 2006-2017, Mapbox

DISCLAIMER: Boundary lines, size & shape are an approximate sketch only & not to scale. This information is considered reliable, neither this broker nor owners make any guarantee, warranty or representation as to correctness of any data or descriptions and the accuracy of such statements. The correctness and / or accuracy of any and all statements should be determined through independent investigation made by the prospective purchaser.



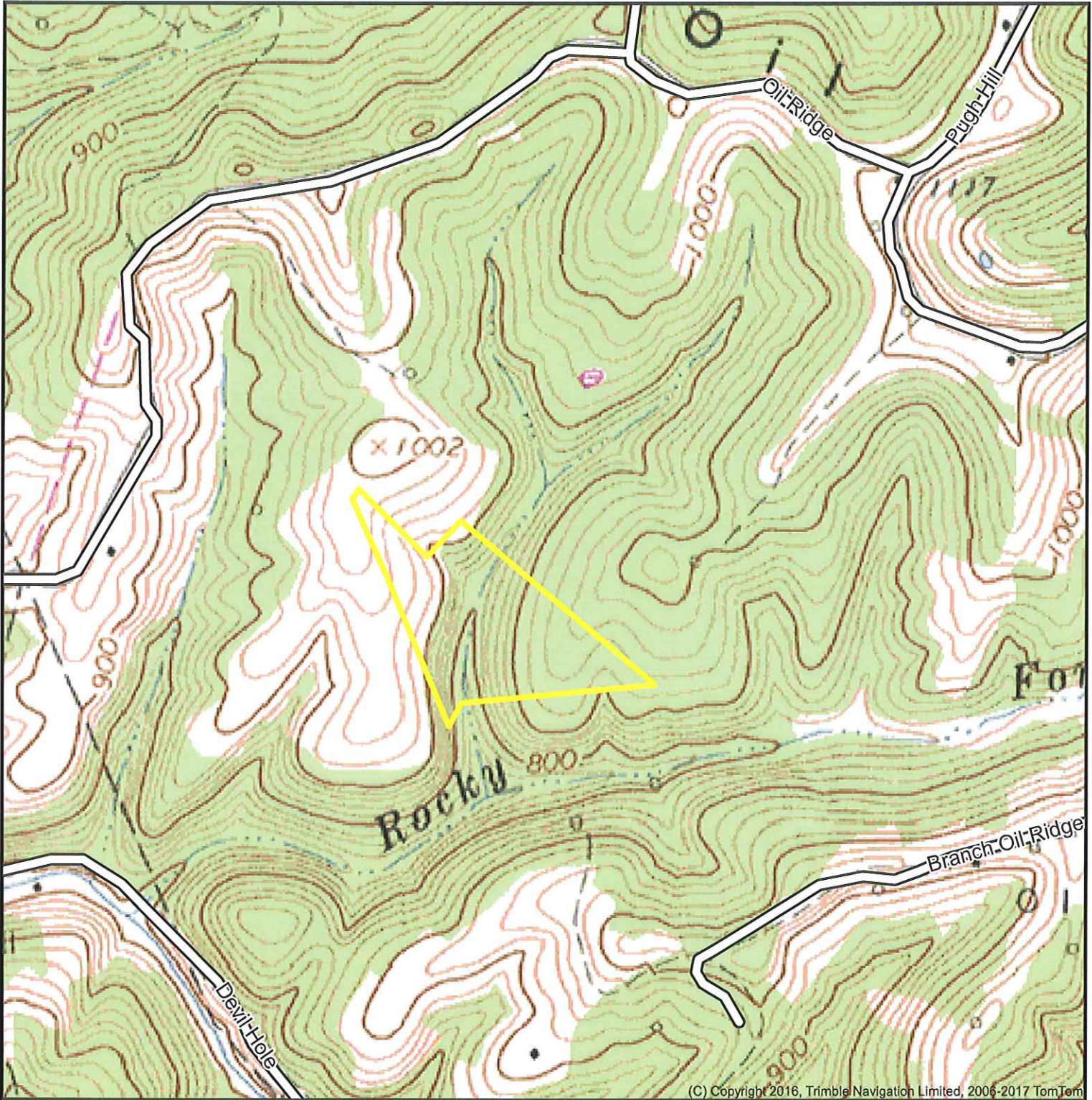
**20.29 ACRES +/- RITCHIE
COUNTY, WV.**



DISCLAIMER: Boundary lines, size & shape are an approximate sketch only & not to scale.
This information is considered reliable, neither this broker nor owners make any guarantee, warranty or representation as to correctness of any data or descriptions and the accuracy of such statements. The correctness and / or accuracy of any and all statements should be determined through independent investigation made by the prospective purchaser.



20.29 ACRES +/- RITCHIE COUNTY, WV.

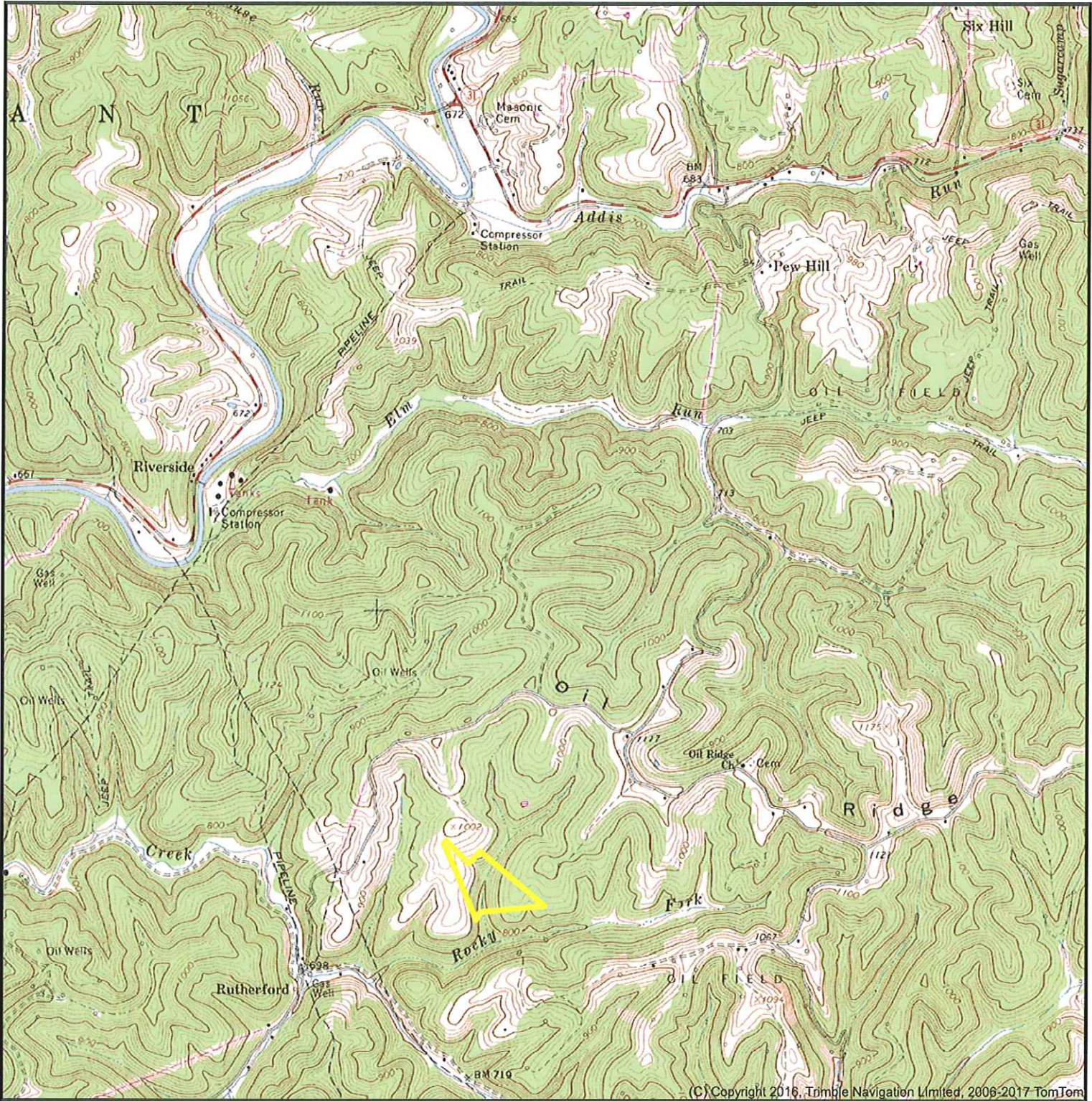


(C) Copyright 2016, Trimble Navigation Limited, 2006-2017 TomTom

DISCLAIMER: Boundary lines, size & shape are an approximate sketch only & not to scale. This information is considered reliable, neither this broker nor owners make any guarantee, warranty or representation as to correctness of any data or descriptions and the accuracy of such statements. The correctness and / or accuracy of any and all statements should be determined through independent investigation made by the prospective purchaser.



20.29 ACRES +/- RITCHIE COUNTY, WV.



DISCLAIMER: Boundary lines, size & shape are an approximate sketch only & not to scale. This information is considered reliable, neither this broker nor owners make any guarantee, warranty or representation as to correctness of any data or descriptions and the accuracy of such statements. The correctness and / or accuracy of any and all statements should be determined through independent investigation made by the prospective purchaser.

