



Tracts DT-3, DT-4 and DT-5

206th Street east of Pierre

These three 20+/- acre tracts will make beautiful residential sites, already have a good stand of trees, will provide private country living and are within 5 miles of the City of Pierre. This property borders 206th Street east of Pierre which provides quick easy access to town while still providing the comforts of country living. Most of the property is flat, currently being farmed and could be divided into smaller tracts, therefore insuring your investment will continue to appreciate.



These three tracts are within 5 miles from the City of Pierre. Tracts DT-3 and DT-4 border 206th Street east of Pierre just east of Arikara Place giving quick access to Pierre.



Tracts DT-3 and DT-4 are pretty flat, have a row of trees running across them from East to West and will make beautiful residential building sites that will provide private country living with enough space to the privacy we all want.



DT-5 is 1/4 mile south of 206th Street and has a beautiful scenic valley

HLC



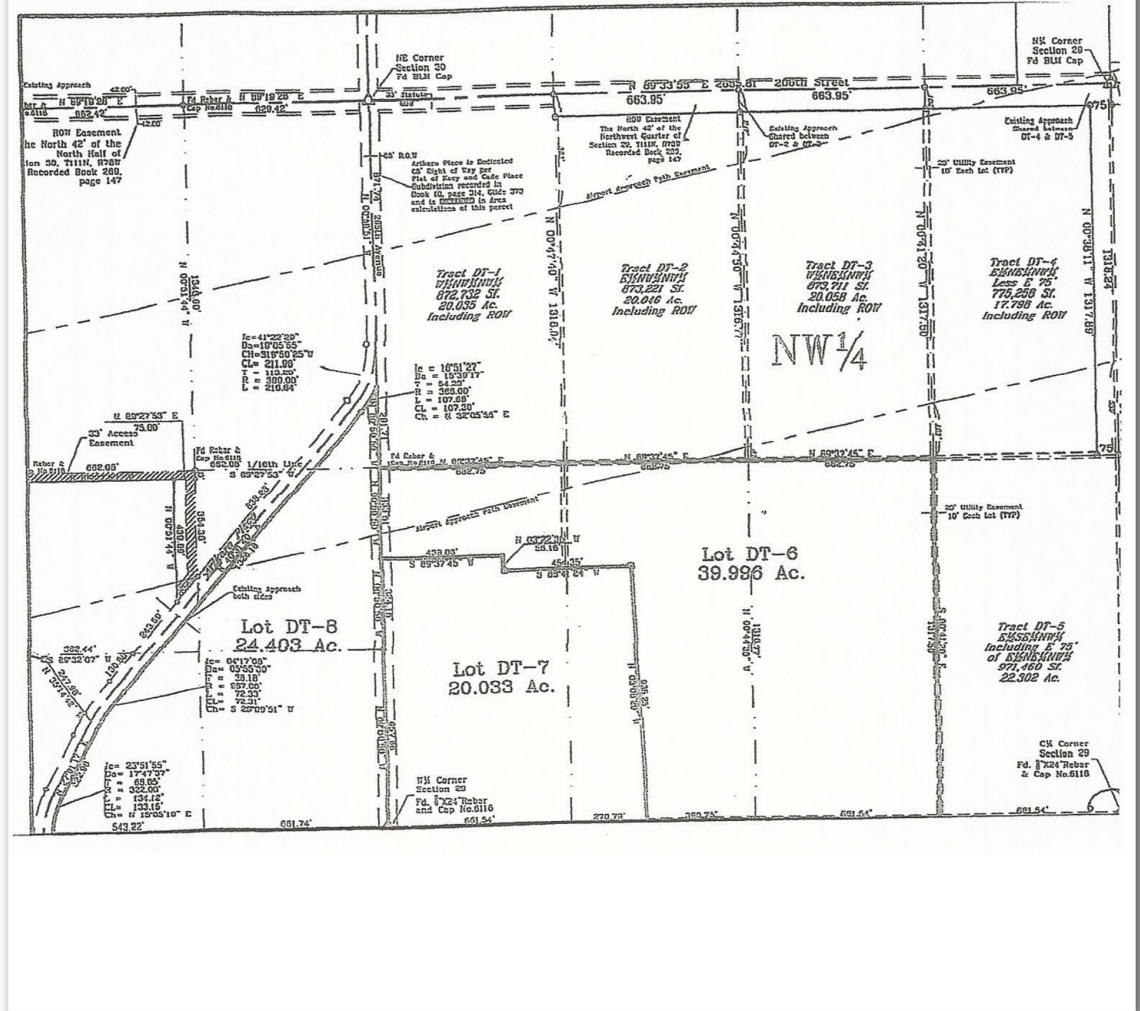
A dam.



And some grass and hay ground for your horses. There are very few tracts of land that provide this much beauty and privacy so close to town.



All three tracts are are zoned Ag B2.



For those that are investors, this property is perfect for further development of smaller tracts.

For more information or to schedule a viewing contact
Dan Todd (605) 494.0205 or Dan@HewittLandCompany.com