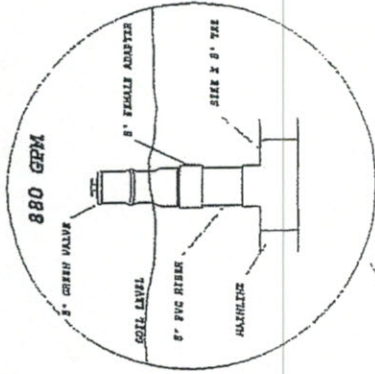


EXISTING 10" MAINLINE W/CAN.



NOTES

| | |
|---------------------|-----|
| CROP | N/A |
| BRAND/RTI | N/A |
| ACRES | 80 |
| PLANT COUNT | N/A |
| IRRIGATION SERVICE | N/A |
| BORE 10" | N/A |
| DEPTH | N/A |
| SET ISOLATION | N/A |
| PRESSURE REGULATION | N/A |
| FILTRATION | N/A |
| APPLICATION RATE | N/A |

RESERVE RELIEF VALVE

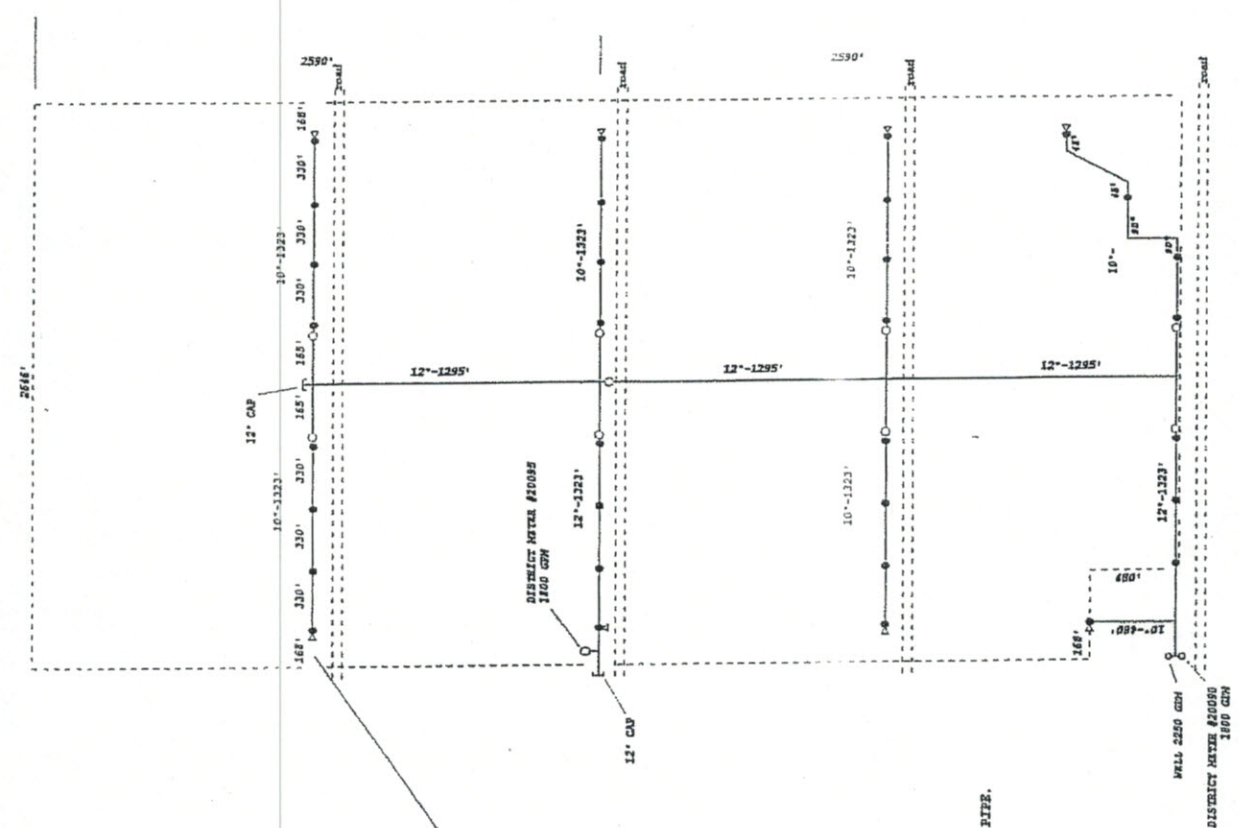
AGRI-VALLEY
FRIENDS
IRRIGATION INC.
FRESNO
MERCED
CINERFIELD
800-277-2269

EARTHBOUND FARMS

REC 9
DATE: 8/31/2017
BY: A.M.J.
JOB NO: 80-211
SHEET: 01 OF 01
REPRODUCTION OR USE OF THESE PLANS WITHOUT THE
CONSENT OF AGR-VALLEY IRRIGATION IS PROHIBITED

- LEGEND
- ▲ TEST
 - PLUM VALVE
 - △ RELIEF
 - COMPRES VALVE
 - BUTTERFLY VALVE
 - FELIX

22



REVISED 8-16-51 R.M.
REVISED 8-17-51 R.M.

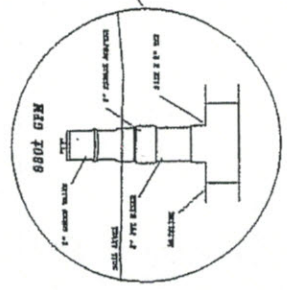
AGRI-VALLEY IRRIGATION INC.
FRESNO
FIVE POINTS
FIREDAUGH
MERCED
GREENFIELD
INCORPORATED
800-357-2269

EARTHBOUND FARMS
SAC 32
WELL 1' x 400'
DATE: 9-15-2009
DRAWN BY: M.H.M.
CHECKED: G.C.
REPRODUCTION OR USE OF THESE PLANS WITHOUT THE
CONSENT OF AGRI-VALLEY IRRIGATION IS PROHIBITED.

32

RECOMMENDATIONS

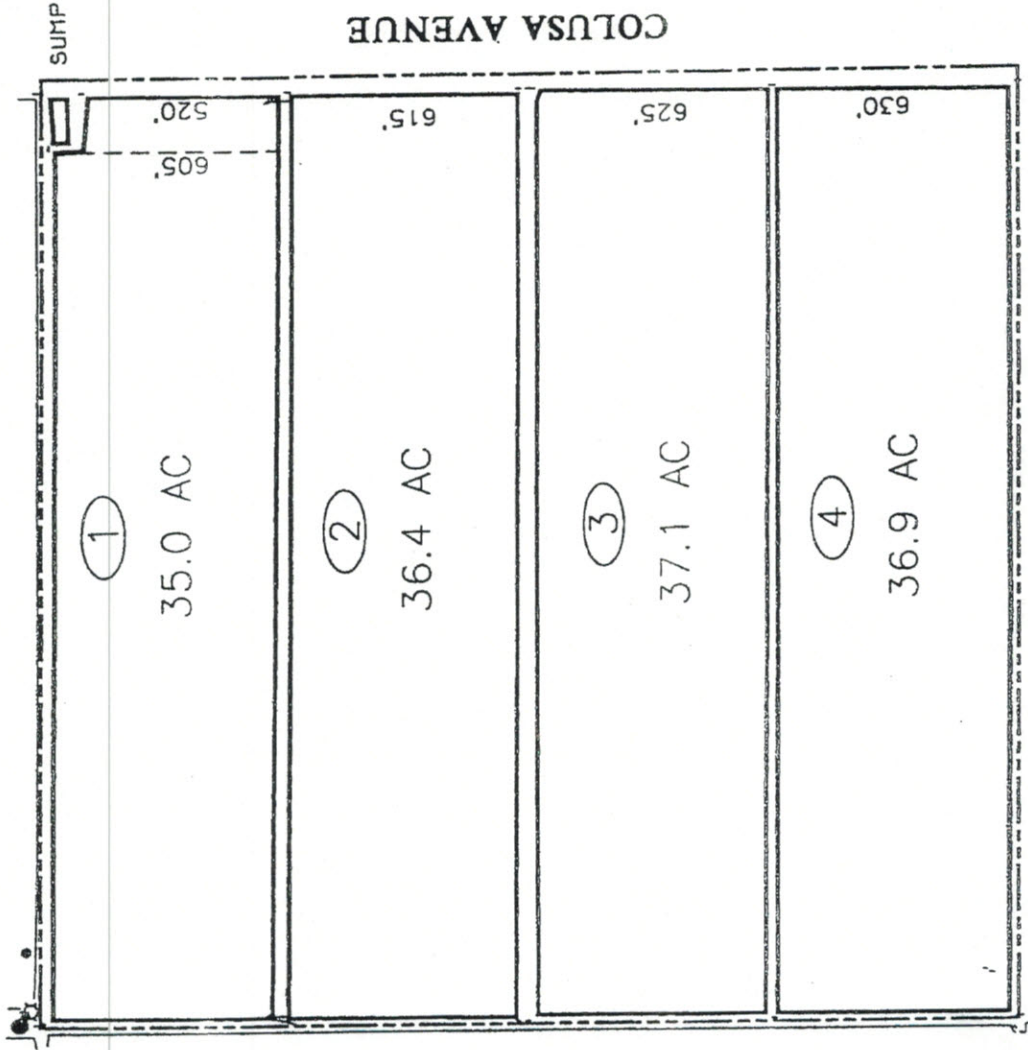
1. DO NOT EXCEED 5 FPS WATER VELOCITY ON LARGE ID PIPE.
2. 12" PIPE @ 5 FPS = 1700 GPM
3. 30" PIPE @ 5 FPS = 1200 GPM
4. UPGRADE PRESSURE RELIEF VALVES & SOURCE.
5. MINIMUM UPGRADE: 4" INBOUND PRESSURE RELIEF.



- LEGEND**
- 12" PIPE
 - 30" PIPE
 - PRESSURE RELIEF VALVE
 - CHECK VALVE
 - AUTOMATIC VALVE
 - STOP VALVE
 - FITTING

COUNTY 10
 TOWNSHIP 18S
 RANGE 16E
 SECTION 11
 BASE 11

RANCH 11-2
MISSION RANCHES
 FEBRUARY 2000
 AG SURVEYING, INC. (831)455-1315
 FILE: ROM5PTII.CCC ROM5PTII.DWG
 VIEW: PSRANCH



PRELIMINARY

LEGEND

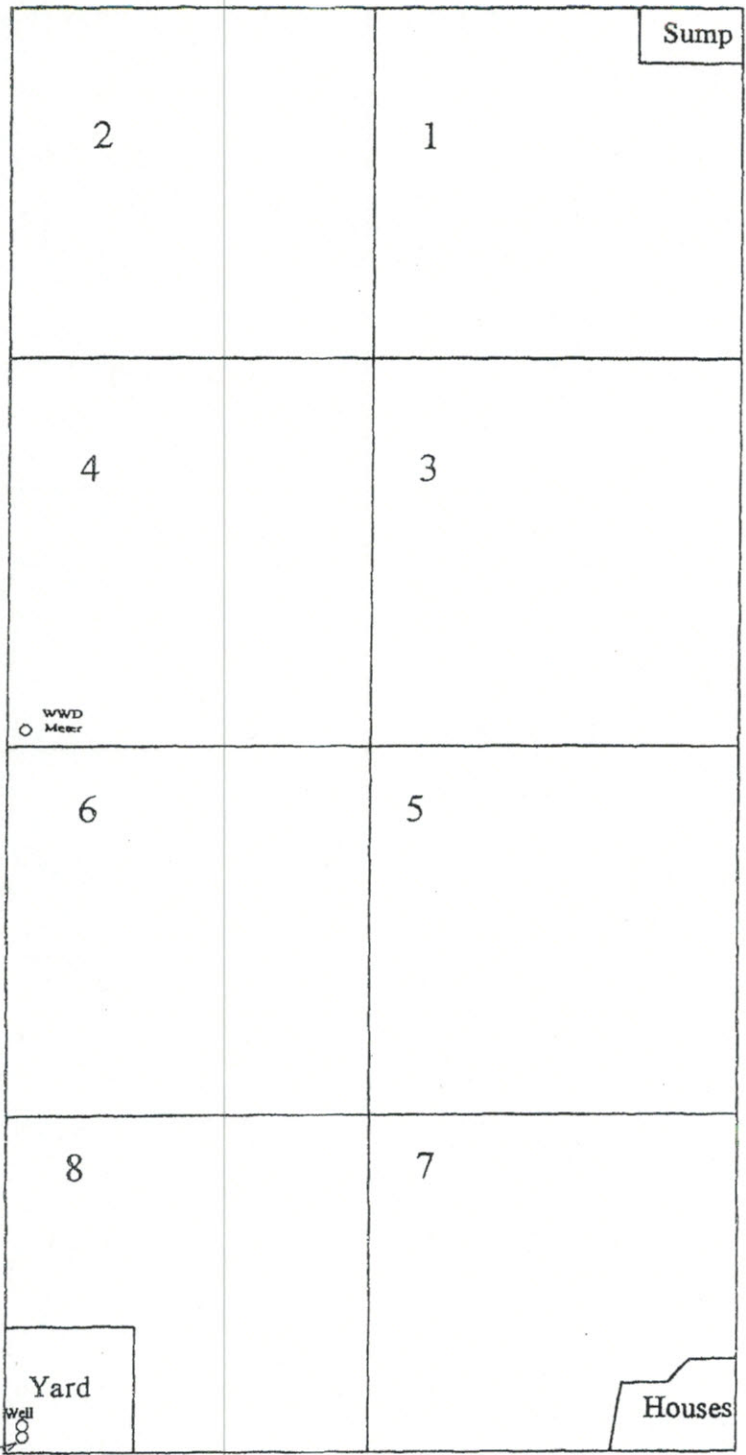
- INDICATES A
- STAND PIPE
- ☆ TURN OUT



145.4± ACRES NET CROP
160.61± ACRE / FEE

APR 28 2005

Mission Organics
Section 32
290 Ac



Lake Ave.

Excelsior Ave

Westside School

APR 28 2005