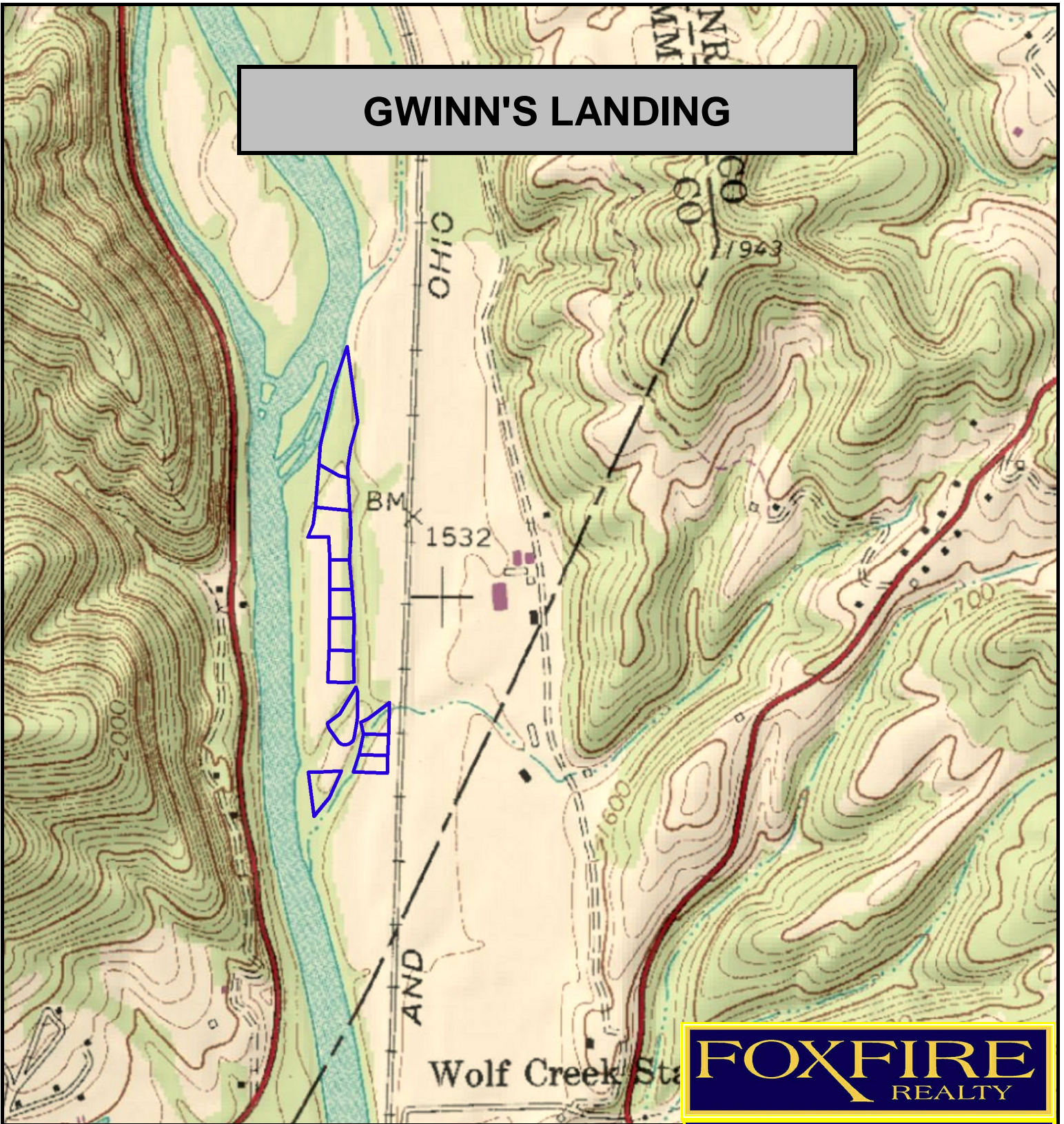
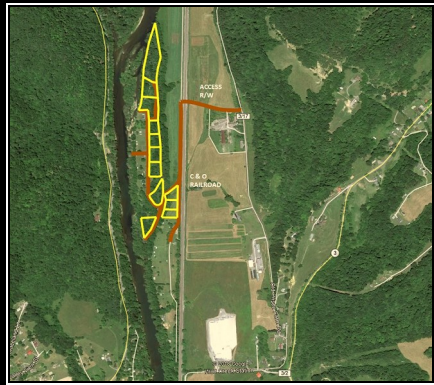


# GWINN'S LANDING



**FOXFIRE**  
REALTY



GWINN'S LANDING, Summers County, WV (topographic map)  
Elevation Range: 1507' - 1532' +/-; Google Coordinates:  
LAT 37.706634 (N), LON -80.667696 (W)  
This map is for general location purposes only. Consult a  
licensed land surveyor for actual boundary location and  
acreage.

RICHARD GRIST, Broker - Auctioneer - Forester  
304.646.8837 Richard@Foxfirenation.com  
WWW.FOXFIRENATION.COM

SCALE 1:10000

