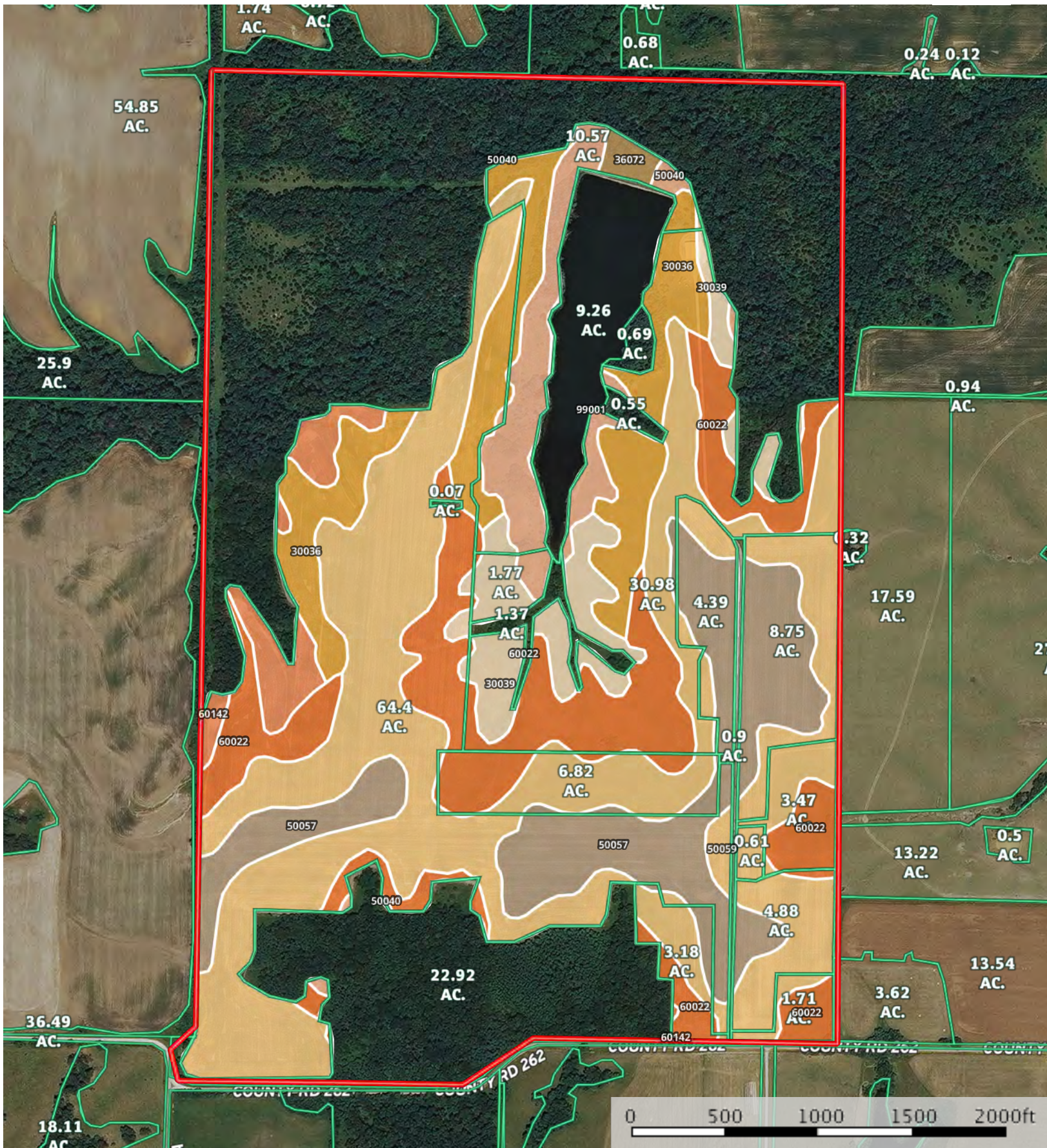


# Shelby County 246+/- Acres

Shelby County, Missouri, 246 AC +/-



Approximate Boundary

Boundary 141.8 ac

SOIL CODE	SOIL DESCRIPTION	ACRES	%	CAP
36072	Blackoar silt loam, 1 to 4 percent slopes, frequently flooded	0.8	0.59	3w
60022	Leonard silt loam, 1 to 6 percent slopes, eroded	26.1	18.43	3e
30039	Armstrong loam, 9 to 14 percent slopes, eroded	8.6	6.09	4e
30036	Armstrong loam, 5 to 9 percent slopes	16.6	11.72	3e
99001	Water	0.1	0.09	8
50057	Putnam silt loam, 1 to 3 percent slopes	21.8	15.38	3w
50040	Lindley loam, 14 to 20 percent slopes, eroded	8.0	5.67	6e
60142	Keswick loam, 9 to 14 percent slopes, eroded	4.3	3.07	4e
50059	Mexico silt loam, 1 to 4 percent slopes, eroded	55.3	38.97	3e
TOTALS		141.8	100%	3.27

### Capability Legend

Increased Limitations and Hazards

Decreased Adaptability and Freedom of Choice Users

Land, Capability Class(non-irrigated)



'Wild Life'

Forestry

Limited

Moderate

Intense

Limited

Moderate

Intense

Very Intense

### Grazing Cultivation

(c) climatic limitations (e) susceptibility to erosion

(s) soil limitations within the rooting zone (w) excess of water