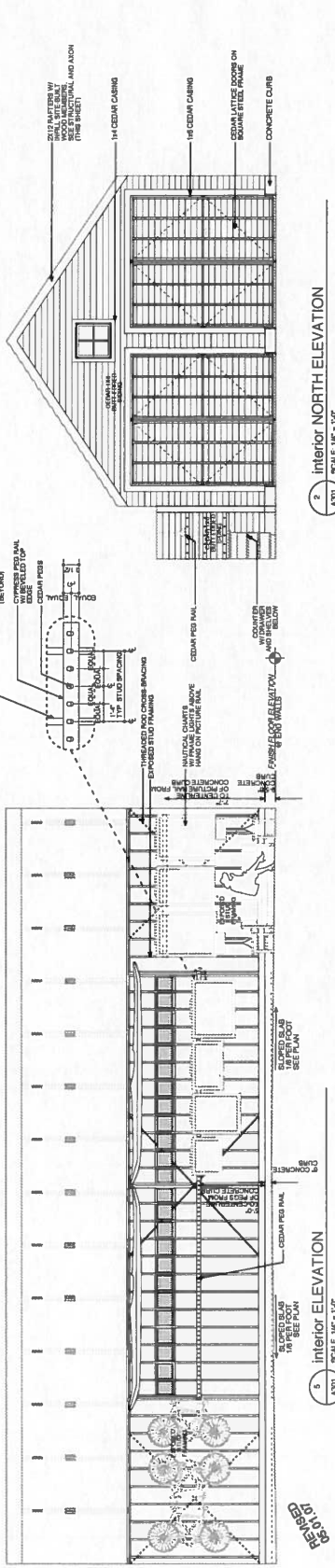
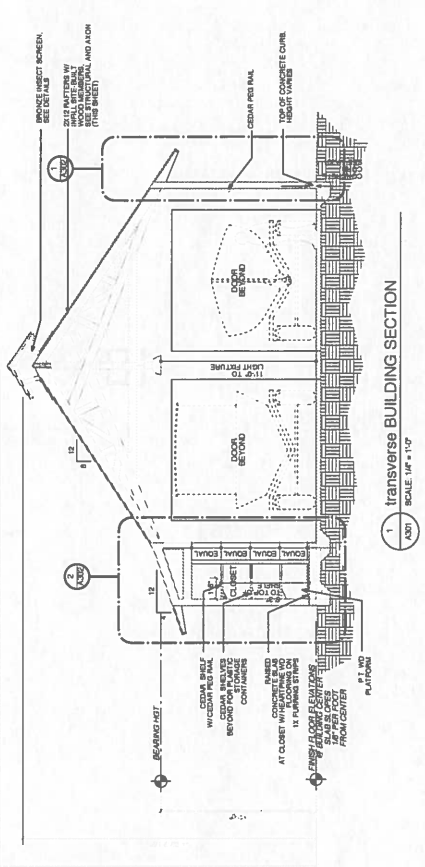


1 axonometric of TYP. TRUSS
SCALE 1/4" = 1'-0"



2 interior SOUTH ELEVATION
SCALE 1/4" = 1'-0"

3 interior NORTH ELEVATION
SCALE 1/4" = 1'-0"



4 transverse BUILDING SECTION
SCALE 1/4" = 1'-0"

5 interior SOUTH ELEVATION
SCALE 1/4" = 1'-0"

LIGHTING
04.27.07

KEY	ITEM	MANUFACTURER/MODEL
A	SCENCE	VAPORTIGHT, VWR215-41-G-09
B	PENDANT	RJM, DEEP BOWL, DOME NO. 808 W/VERTICAL STUB EXTENSION REFLECTOR COLOR-G8
C	PENDANT	VAPORTIGHT, V215-41-G-09
D	RECESSED CAN/HOUSING AND TRIM	HALO, H1497T (HOUSING)-1420TBZ (TRIM) 212240
E	FLOODLIGHT	DESTINATION LIGHTING-BRONZE 2 HEADED LIGHT
F	FRAME ART LIGHT	RJM, SELF-BALLASTED DEEP BOWL 1/2 DIA. NO. 818B REFLECTOR COLOR-G8
G	PENDANT	RJM, SELF-BALLASTED DEEP BOWL 1/2 DIA. REFLECTOR COLOR-G8

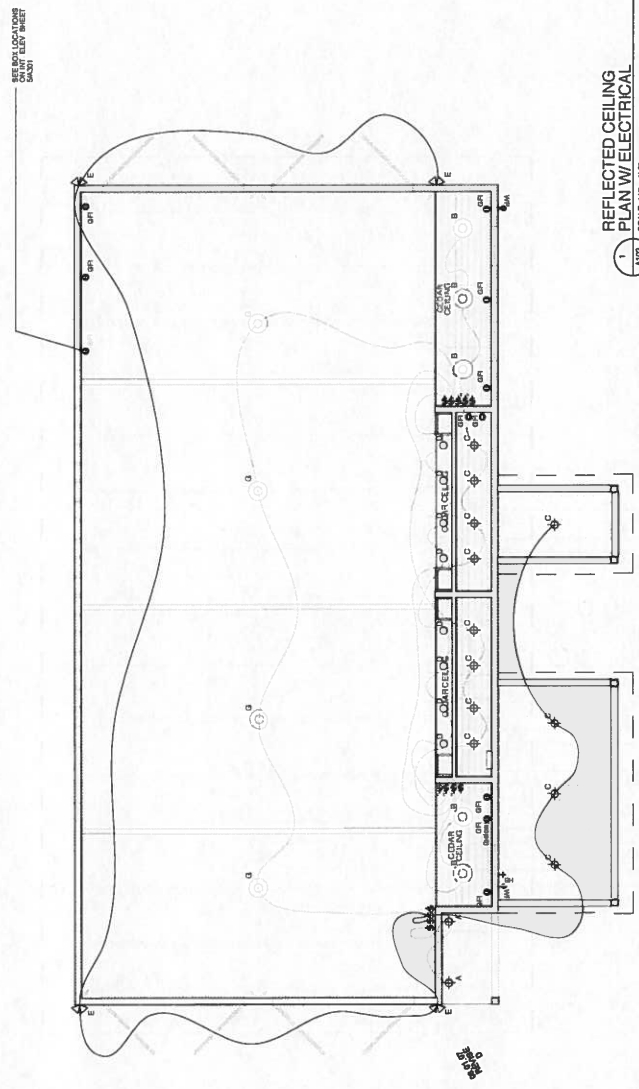
4. FIXTURE SCHEDULE
SCALE: 1/4" = 1'-0"

⊕	WATERPROOF OUTLET
⊕	PENDANT
○	RECESSED CAN
⊕	HOSE BIB
⊕	WALL MOUNTED SCENCE
⊕	SWITCH LOCATION
⊕	GROUND FAULT RECEPTACLE (GFCI) (RESIP. PRESENT W/ GFCI)
⊕	FLOODLIGHTING

3. LEGEND
SCALE: 1/4" = 1'-0"

1. WORK SHALL CONFORM TO THE LATEST EDITION OF:
 - A. NATIONAL ELECTRICAL CODE (NEC)
 - B. N.E.C.A. STANDARD OF INSTALLATION
 - C. INTERNATIONAL BUILDING CODE
 - D. NATIONAL FIRE ALARM AND SIGNAL CODE
 - E. ALL FEDERAL, STATE AND LOCAL CODES AND ORDINANCES
 - F. LOCAL UTILITY COMPANY REGULATIONS
2. ALL MATERIALS, EQUIPMENT AND DEVICES SHALL AS A MINIMUM, MEET THE REQUIREMENTS OF THE MANUFACTURER'S LITERATURE AND THE REQUIREMENTS OF NFPA 70. ALL MATERIALS AND DEVICES SHALL BE CLASSIFIED BY U.L. AS SUITABLE FOR THE PURPOSES USED.
3. COORDINATE LOCATION OF ELECTRICAL DEVICES AND ELECTRICAL WORK WITH OTHER TRADES TO AVOID CONFLICTS AND INTERFERENCES.
4. ALL ELECTRICAL SWITCHES AND OUTLETS TO BE ABOVE B.F.E.

2. ELECTRICAL NOTES
SCALE: 1/4" = 1'-0"



1. REFLECTED CEILING PLAN W/ ELECTRICAL
SCALE: 1/4" = 1'-0"

REFLECTED
CEILING
PLAN

A102