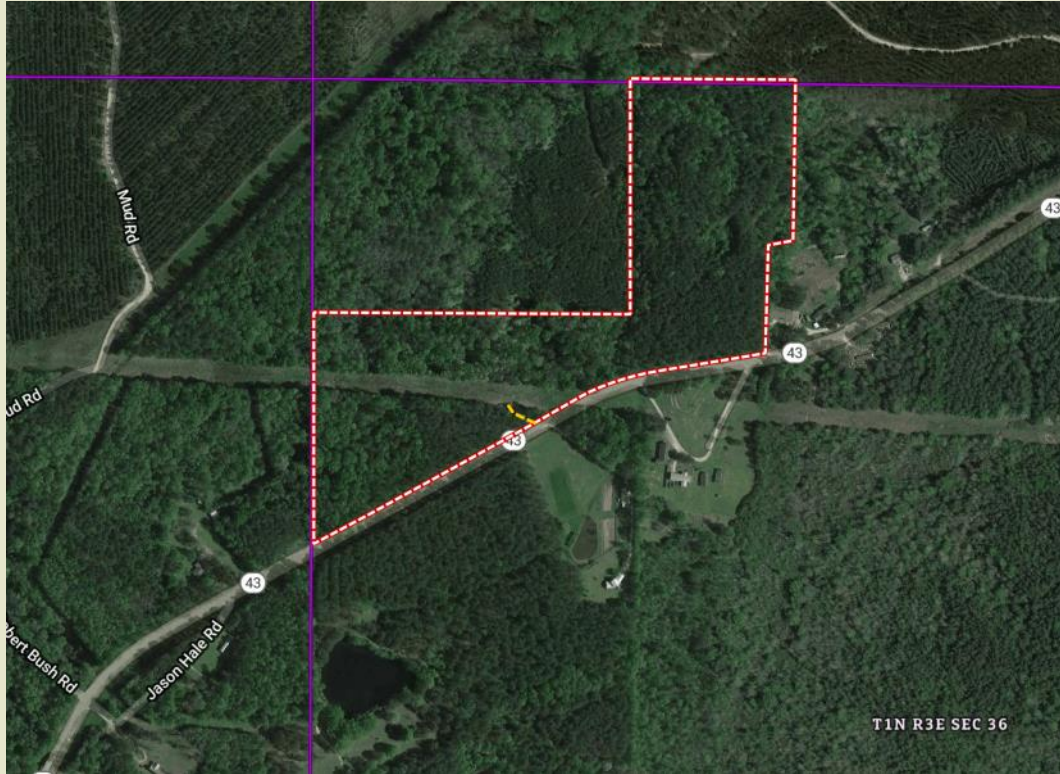




Sartain's Heritage
Properties, LLC.
www.SartainsHeritage.com

Rook Road 35 Acres +/- Simpson County, MS



CONTACT:
JOE MALLARD
601-927-8222
Jmallard@sartainsheritage.com

Sartain's Heritage Properties
106 First Choice Drive
Madison, MS 39110
Phone: 601-856-2720
Fax: 601-853-6765
www.SartainsHeritage.com

Property: Rook Road Tract, located one-mile East of Pinola on MS Hwy 43. The property consists of 35 +/- acres of timberland. Mixed pine and hardwood timber with a power line running through the tract. Timber has not been thinned or cut in over forty years. Weyerhaeuser owns the property to the North.

Cruise Information:

Poles	56 tons
Pine ST	964 tons
Pine CNS	322 tons
Pine PW	153 tons
Hardwood ST	629 tons
Hardwood PW	278 tons
(Doyle Scale)	

Location: Section 36, Township 1 North, Range 3 East Simpson County, Mississippi. One mile east of Pinola, MS. North side of MS Hwy 43.

Price: \$71,500

Contact: Joe R. Mallard 601-927-8222 jmallard@sartainsheritage.com



All information contained herein is supplied by sources deemed reliable, but is not guaranteed by Sartain's Heritage Properties, its Brokers or Agents. Properties are subject to errors, omissions, correction, price change, prior sale or withdrawal without notice.