



JD Canyon Ranch

267 Acres

Edwards County, TX



JD Canyon 267 Acres

Located in south central Edwards County

Remote, Remote, Remote! End of the road property

Low fencing on two sides joining two low fenced 8000+ acre neighbor ranches
on south and west sides

Water well and electricity in place

1120sf cabin and 1120sf shed

Heavily wooded terrain, deep canyons, dry creeks make a perfect habitat for wildlife

Blinds and feeders

Hundreds of feet of water lines going to troughs and cabin

Excellent hunting – whitetail, turkey, axis, aoudad, & hog, occasional elk and sika

Exempt taxes

\$479,950 Listing #202

Western Hill Country Realty

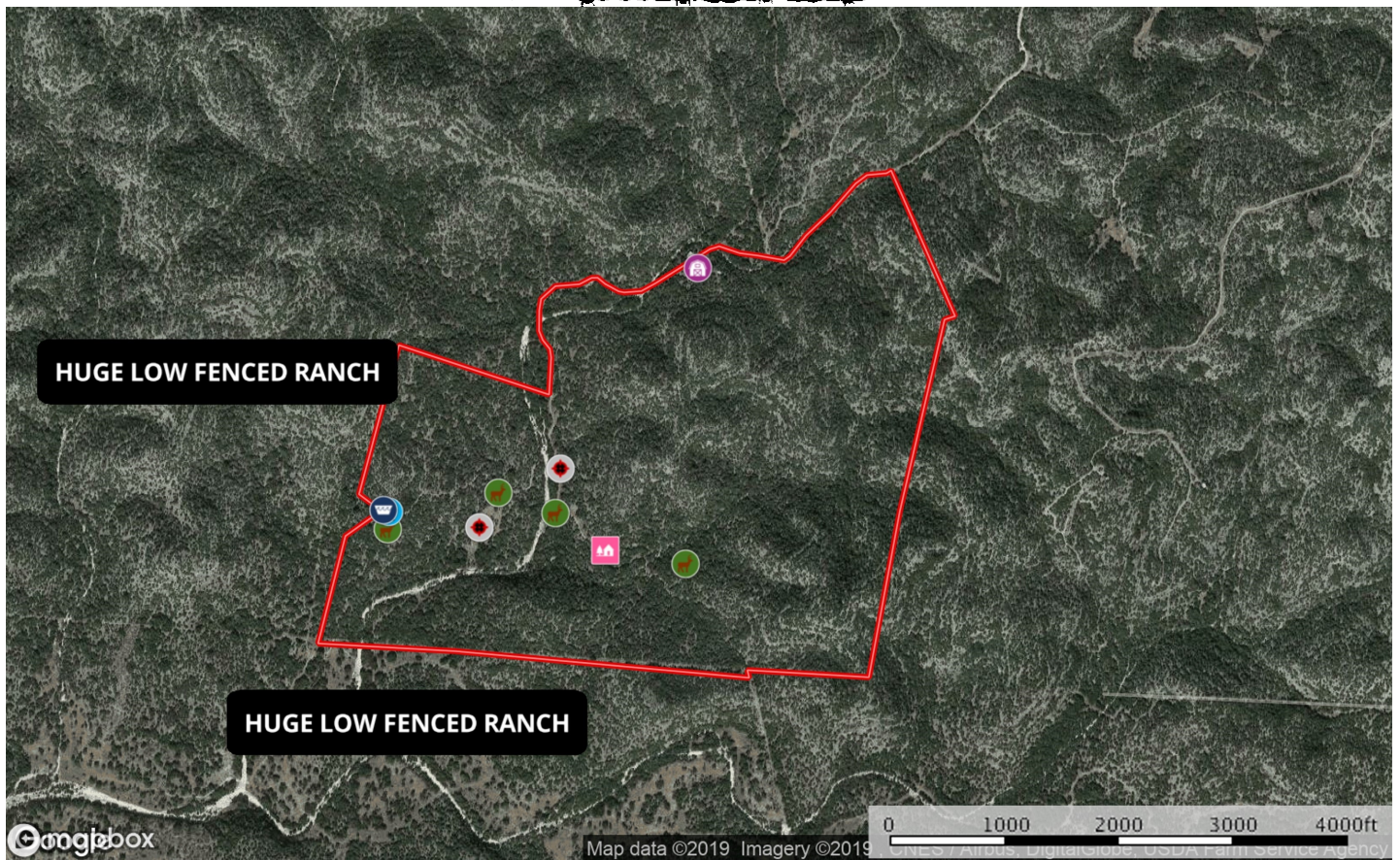
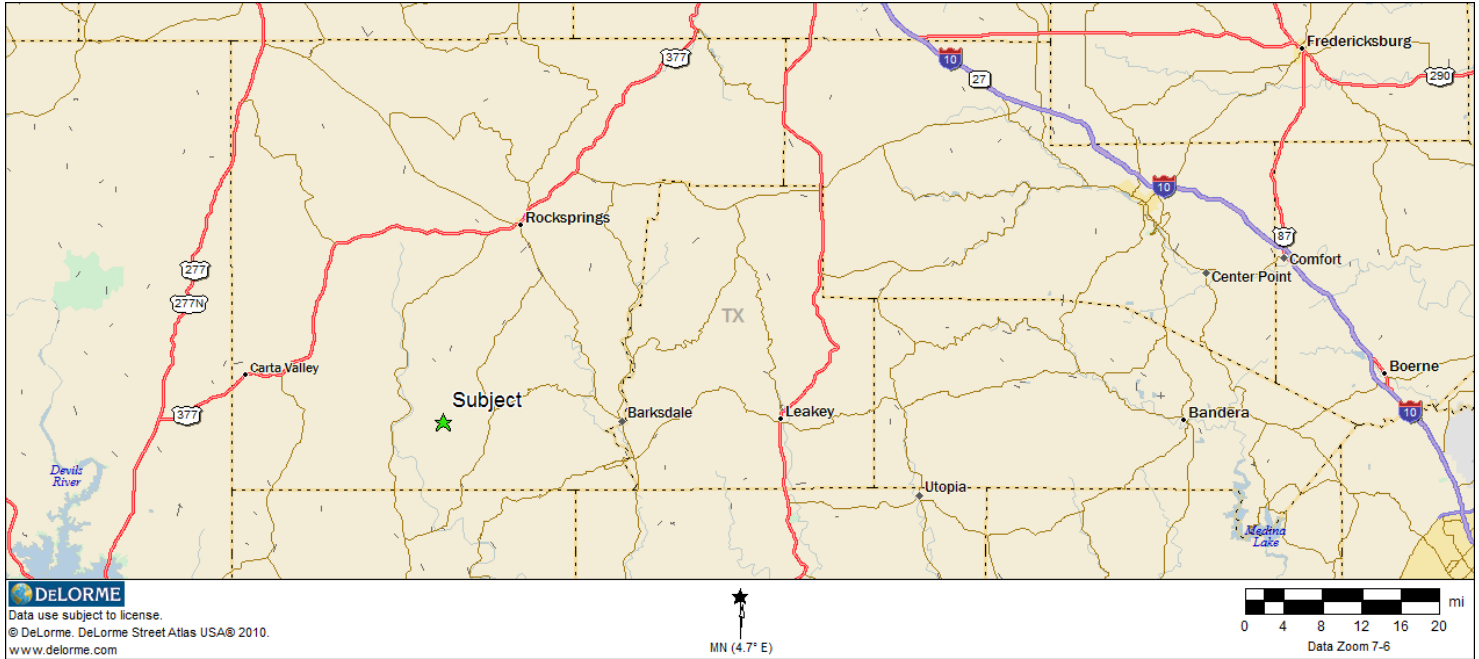
www.westernhillcountryrealty.com

info@westernhillcountryrealty.com

830-683-4435



JD Canyon Ranch 267 Acres Edwards County, TX



- Water Storage Tank
- Well
- Feeder
- Blind
- Cabin
- Barn
- Boundary

Western Hill Country Realty

www.westernhillcountryrealty.com

info@westernhillcountryrealty.com

830-683-4435



JD Canyon Ranch

267 Acres

Edwards County, TX



Western Hill Country Realty

www.westernhillcountryrealty.com

info@westernhillcountryrealty.com

830-683-4435



JD Canyon Ranch

267 Acres

Edwards County, TX



Western Hill Country Realty

www.westernhillcountryrealty.com

info@westernhillcountryrealty.com

830-683-4435