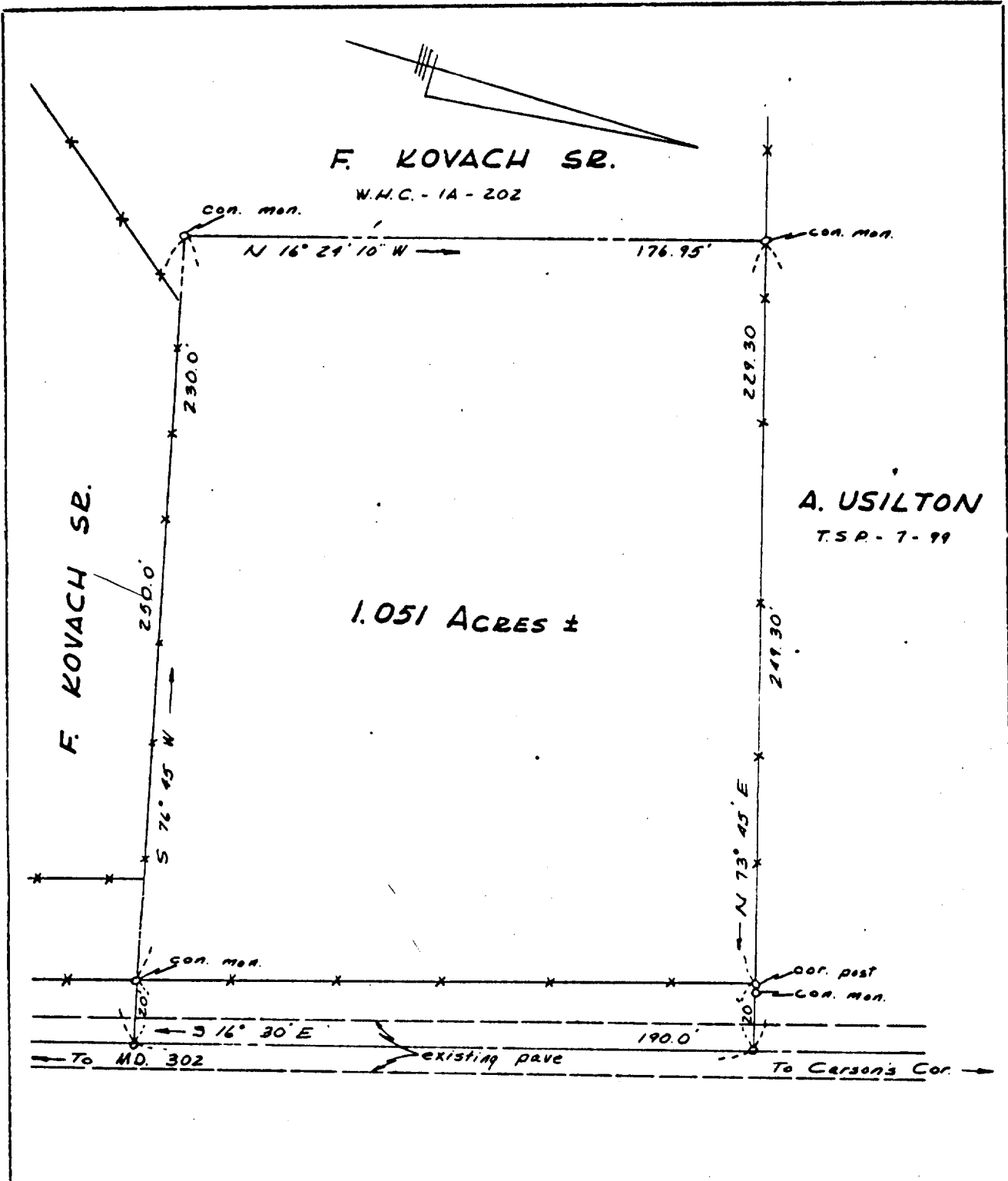


Katie E. Stafford
Notary Public



PLAT OF A SURVEY OF A PART OF THE
FRANK KOVACH SR. LANDS
 1ST DISTRICT, QUEEN ANNES CO., MD.
 for Homer Robert Lowman

J. R. MCCRONE, JR., INC.
 REGISTERED PROFESSIONAL ENGINEERS
 AND SURVEYORS
 ANNAPOLIS, MARYLAND
 PRINCE FREDERICK CENTREVILLE
 TRAPPE LEONARDTOWN

SCALE 1" = 40'
 DATE 6/69
 JOB. No. E-5063
 FOLDER 716

SUBDIVISION PLAT RECORDED IN PLAT BOOK PAGE



QUEEN ANNES COUNTY CIRCUIT COURT (Land Records) CWC 8, p. 0493, MSA_CE58_222. Date available 04/07/2005. Printed 09/11/2018.