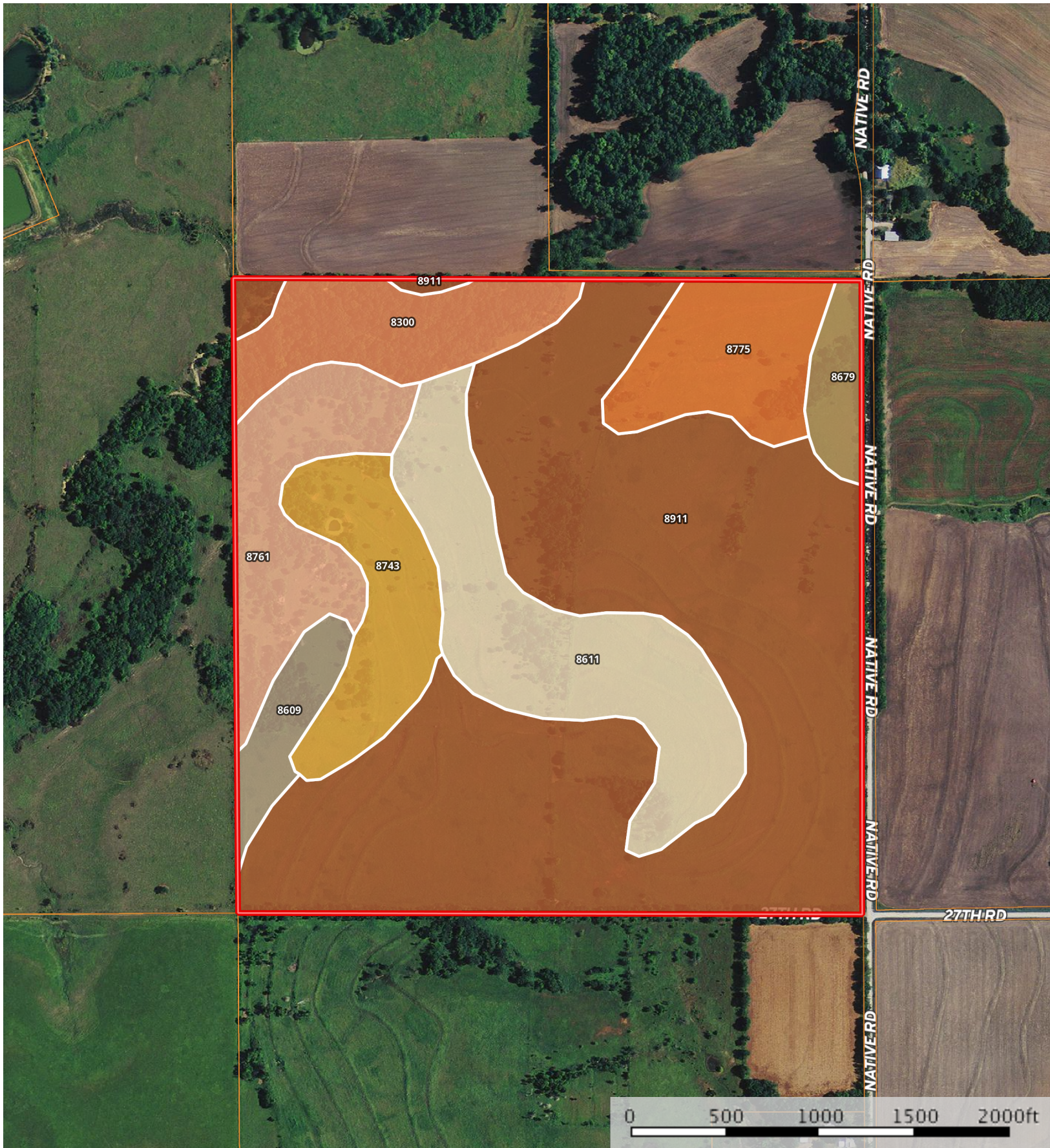


2718 NATIVE RD. NE WAVERLY, KS

Coffey County, Kansas, 160 AC +/-



Boundary

Cameron Roth
P: (620) 888-3040

info@vaughnroth.com

PO Box 225, Burlington, KS 66839

The information contained herein was obtained from sources deemed to be reliable. MapRight Services makes no warranties or guarantees as to the completeness or accuracy thereof.

|  Boundary 158.7 ac

SOIL CODE	SOIL DESCRIPTION	ACRES	%
8679	Dennis silt loam, 1 to 3 percent slopes	3.6	2.28
8775	Kenoma silt loam, 1 to 3 percent slopes	10.6	6.65
8611	Apperson-Eram silty clay loams, 1 to 3 percent slopes	21.7	13.65
8743	Eram-Apperson silty clay loams, 3 to 7 percent slopes	11.4	7.18
8911	Summit silty clay loam, 1 to 3 percent slopes	83.0	52.29
8609	Aliceville silty clay loam, 1 to 3 percent slopes	4.5	2.86
8761	Eram-Shidler silty clay loams, 4 to 15 percent slopes	13.2	8.31
8300	Verdigris silt loam, channeled, 0 to 2 percent slopes, frequently flooded	10.8	6.79
TOTALS		158.7	100%