



1.57 ACRES

123RD ST & METCALF AVE, OVERLAND PARK, KS 66213

FOR SALE

- 1.57+/- Acres on the corner of 123rd & Metcalf
- Perfect for bank, office, and medical
- High visibility
- Zoned CP-O
- Located by Costco, Saint Luke's Hospital, and Target
- Price: \$1,499,000

DEMOGRAPHICS

	1 Mile	3 Mile	5 Mile
2019 POPULATION	7,851	87,917	238,941
2019 MED HOUSEHOLD INCOME	\$78,233	\$94,909	\$90,414
2019 DAYTIME POPULATION	20,823	109,122	180,743

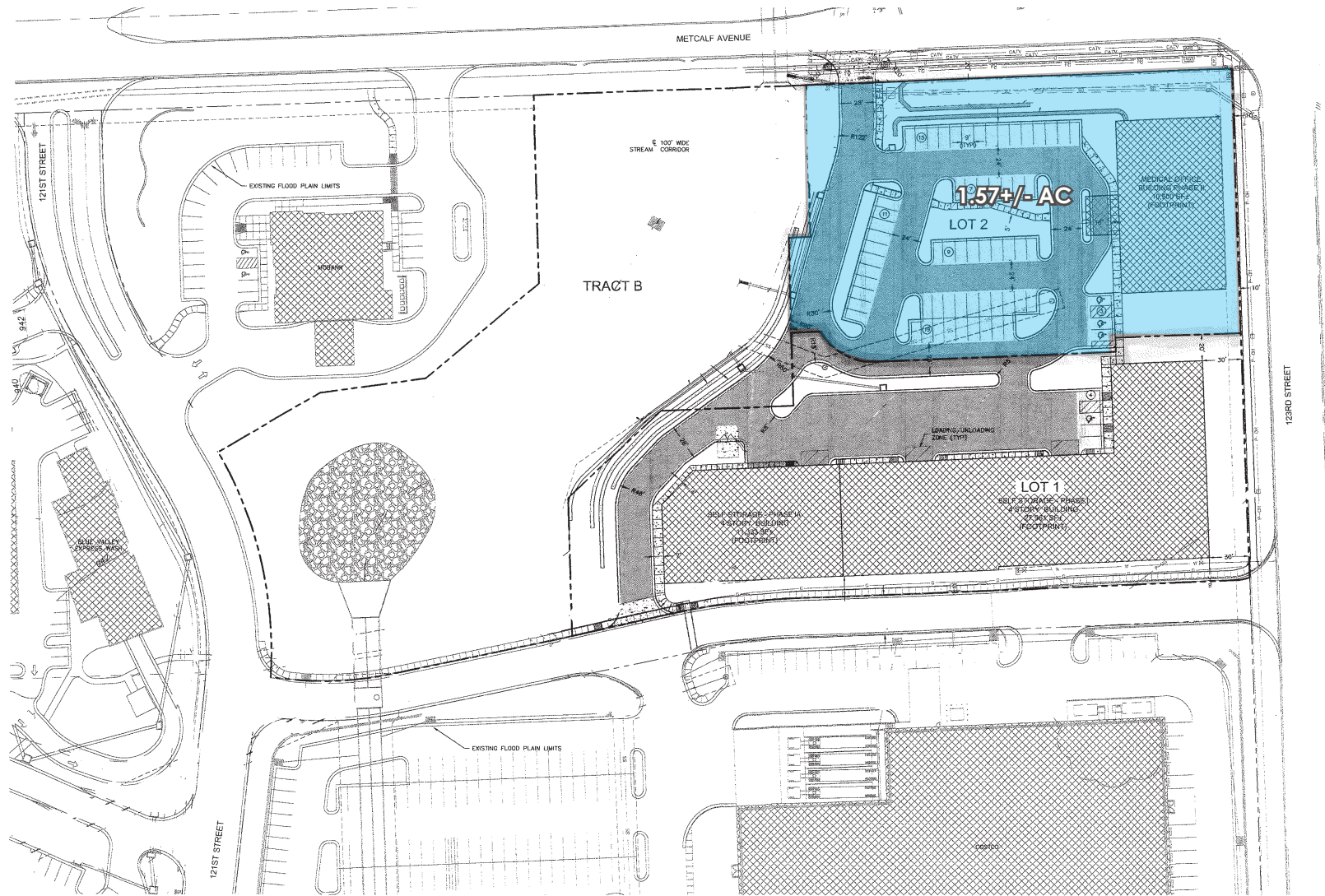
MARTY GILCHRIST, CCIM, SIOR
 Senior Brokerage Associate
 913.945.3707
 martyg@reececommercial.com

RYAN SCHULTEIS
 Brokerage Associate
 913.945.3741
 ryans@reececommercial.com



CONCEPTUAL SITE PLAN

MAPS



The information in this package has been obtained from sources believed reliable. While we do not doubt its accuracy we have not verified it and make no guarantee, warranty or representation about it. It is your responsibility to independently confirm its accuracy and completeness. Any projections, opinions, assumptions, or estimates used are for example only and do not represent the current or future performance of the property. You and your advisors should conduct a careful, independent investigation of the property to determine to your satisfaction the suitability of the property for your needs. © 2019

NEIGHBORHOOD RETAIL MAP

RETAIL MAP



ADDRESS |

NWC of 123rd St & Metcalf Ave



TRAFFIC COUNTS |

23,000 Vehicles/day on Metcalf Ave

*Traffic counts provided by ESRI



HOUSEHOLDS |

37,021 - 3 Miles

The information in this package has been obtained from sources believed reliable. While we do not doubt its accuracy we have not verified it and make no guarantee, warranty or representation about it. It is your responsibility to independently confirm its accuracy and completeness. Any projections, opinions, assumptions, or estimates used are for example only and do not represent the current or future performance of the property. You and your advisors should conduct a careful, independent investigation of the property to determine to your satisfaction the suitability of the property for your needs. © 2019



REECE
COMMERCIAL REAL ESTATE

a Berkshire Hathaway Affiliate