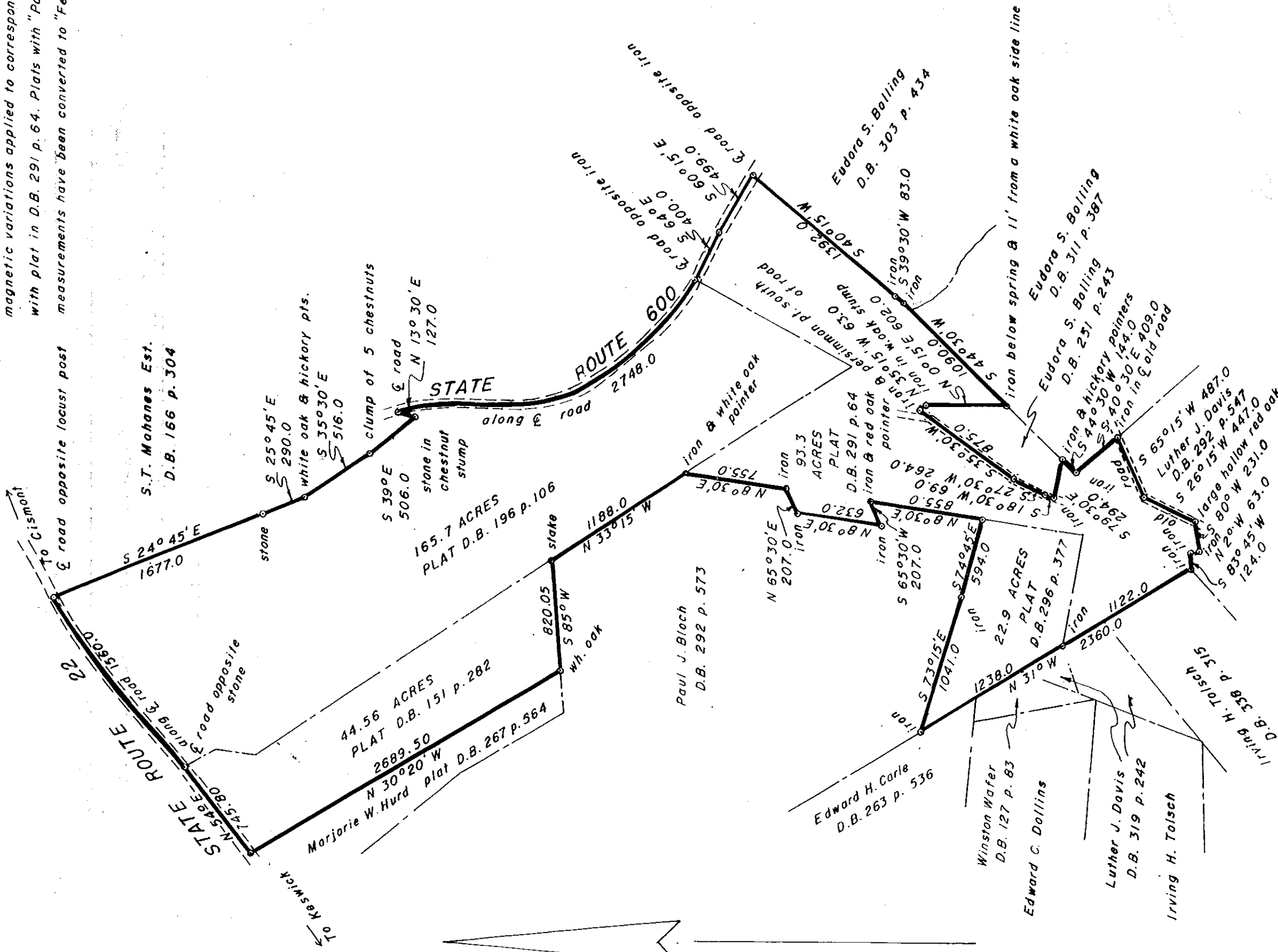


Boundary lines shown have been taken from recorded plats noted hereon with magnetic variations applied to correspond with plat in D.B. 291 p. 64. Plats with "Pole" measurements have been converted to "Feet".



COMPOSITE PLAT SHOWING PROPERTY OF

HELEN AND ALICE CUNNINGHAM

AGGREGATING 326.46 ACRES ACCORDING TO RECORDED PLATS LOCATED NEAR CISMONT ALBEMARLE COUNTY, VA.

COMPOSED OF THE FOLLOWING PARCELS

TAX MAP 65, PARCEL 15  
TAX MAP 81, PARCELS 52, 54, 55, 57, 58, & 62

SCALE 1" = 800'

JANUARY 1967

WILLIAM S. ROUDABUSH, JR.

CERTIFIED LAND SURVEYOR

