





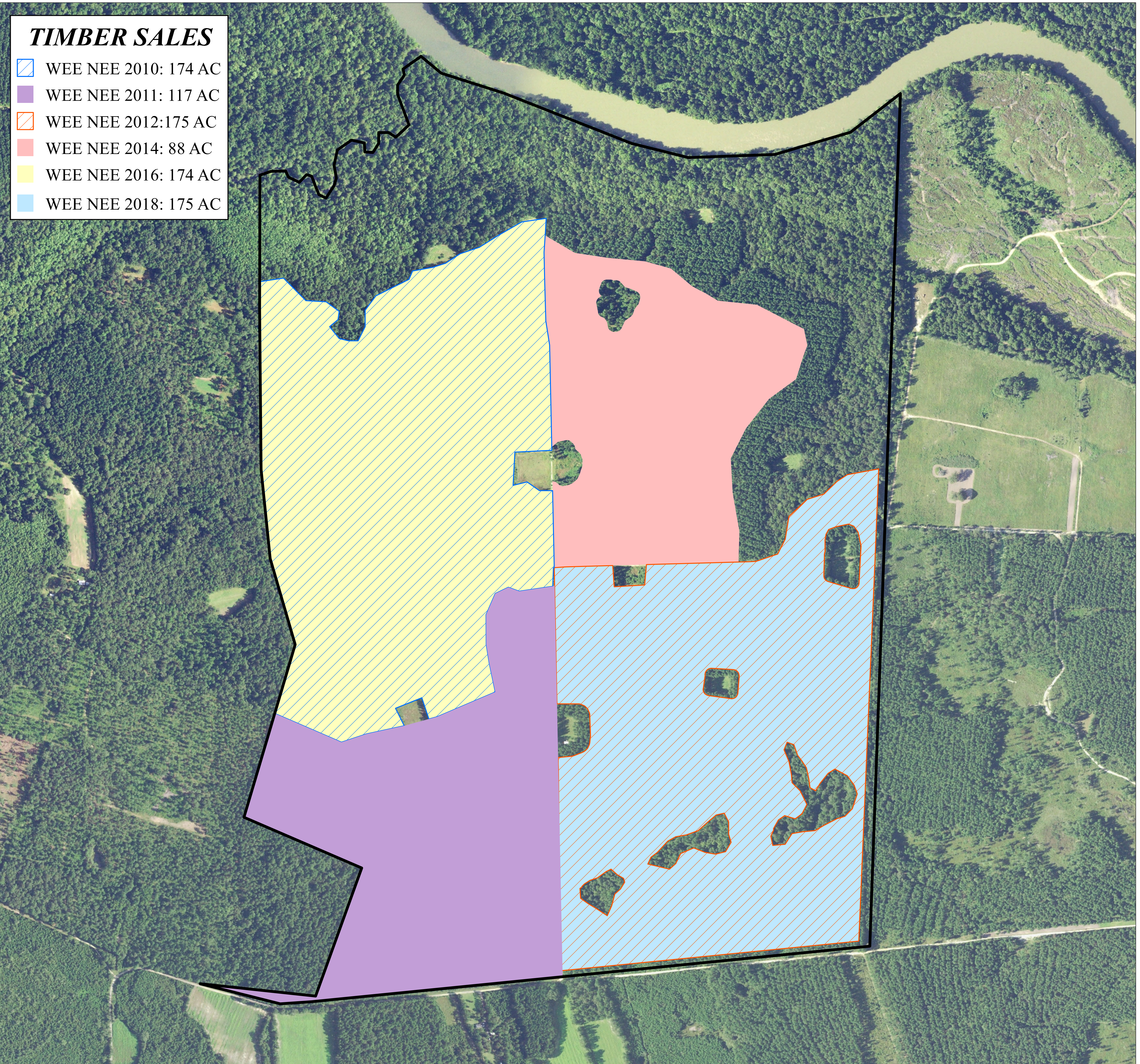


# TIMBER SALES

-  WEE NEE 2010: 174 AC
-  WEE NEE 2011: 117 AC
-  WEE NEE 2012: 175 AC
-  WEE NEE 2014: 88 AC
-  WEE NEE 2016: 174 AC
-  WEE NEE 2018: 175 AC



EXTERNAL SOURCES: NAIP 2017 TRUE COLOR AERIAL,  
BERKELEY COUNTY GIS PARCEL

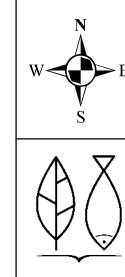
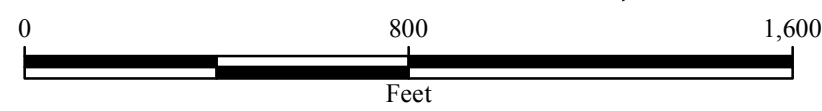
Created By: Stephen Bennett  
Date Created: February 5, 2019  
Copyright 2019 Sabine & Waters, Inc.  
R:\custdat\epi\mapping\weenee\2x2.mxd  
http://www.sabine.net

Sabine & Waters, Inc.  
Environmental Land Management Consultants  
P.O. Box 1072 Summerville, SC 29484  
843.871.5383 (phone) 843.871.2050 (fax)

Disclaimer: This map is a graphic representation of data obtained from various sources. All efforts have been made to warrant the accuracy of this map. However, Sabine & Waters, Inc. disclaims all responsibility and liability for the use of this map.

**REVISED: 2/13/2019**

## WEE NEE - TIMBER SALES EVENING POST INDUSTRIES BERKELEY COUNTY, SC



### NOTES