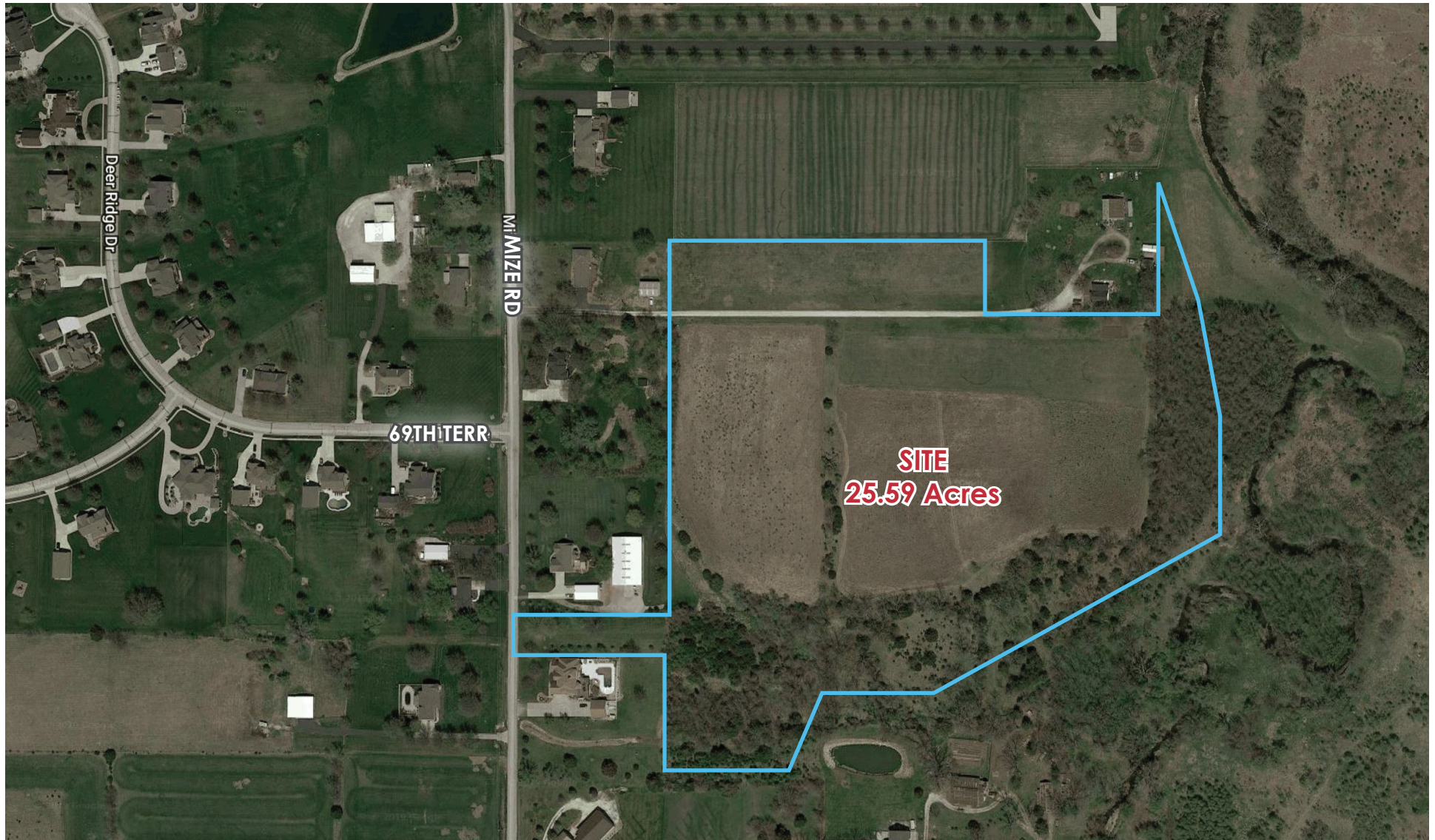


FOR SALE - 25.59 ACRES

69TH TERR & MIZE RD, SHAWNEE, KS 66226



MATT FALK
(913) 266-6611
mattf@reececommercial.com

DICK STEPHENS
(913) 491-3366
ds@reececommercial.com

REECE COMMERCIAL REAL ESTATE
8005 W 110th St, Ste 150, Overland Park, KS 66210
Main: 913.652.4300

Selling Land & Farms Since 1976

69TH TERR & MIZE RD, SHAWNEE , KS

PROPERTY INFORMATION

LOCATION	Approximately 1/4 mile north of 71st St on the east side of Mize Rd
ACRES	25.59 Acres
PRICE	\$831,675 (\$32,500/Acre)
USAGE	Preliminary Platted for Single Family Lots. Offers wooded area for large estate lots.
UTILITIES	All Utilities
SCHOOLS	DeSoto School District
GENERAL	Close to Schools & Monticello Retail Center

The information in this package has been obtained from sources believed reliable. While we do not doubt its accuracy we have not verified it and make no guarantee, warranty or representation about it. It is your responsibility to independently confirm its accuracy and completeness. Any projections, opinions, assumptions, or estimates used are for example only and do not represent the current or future performance of the property. You and your advisors should conduct a careful, independent investigation of the property to determine to your satisfaction the suitability of the property for your needs. © 2020



REECE
COMMERCIAL REAL ESTATE

a Berkshire Hathaway Affiliate

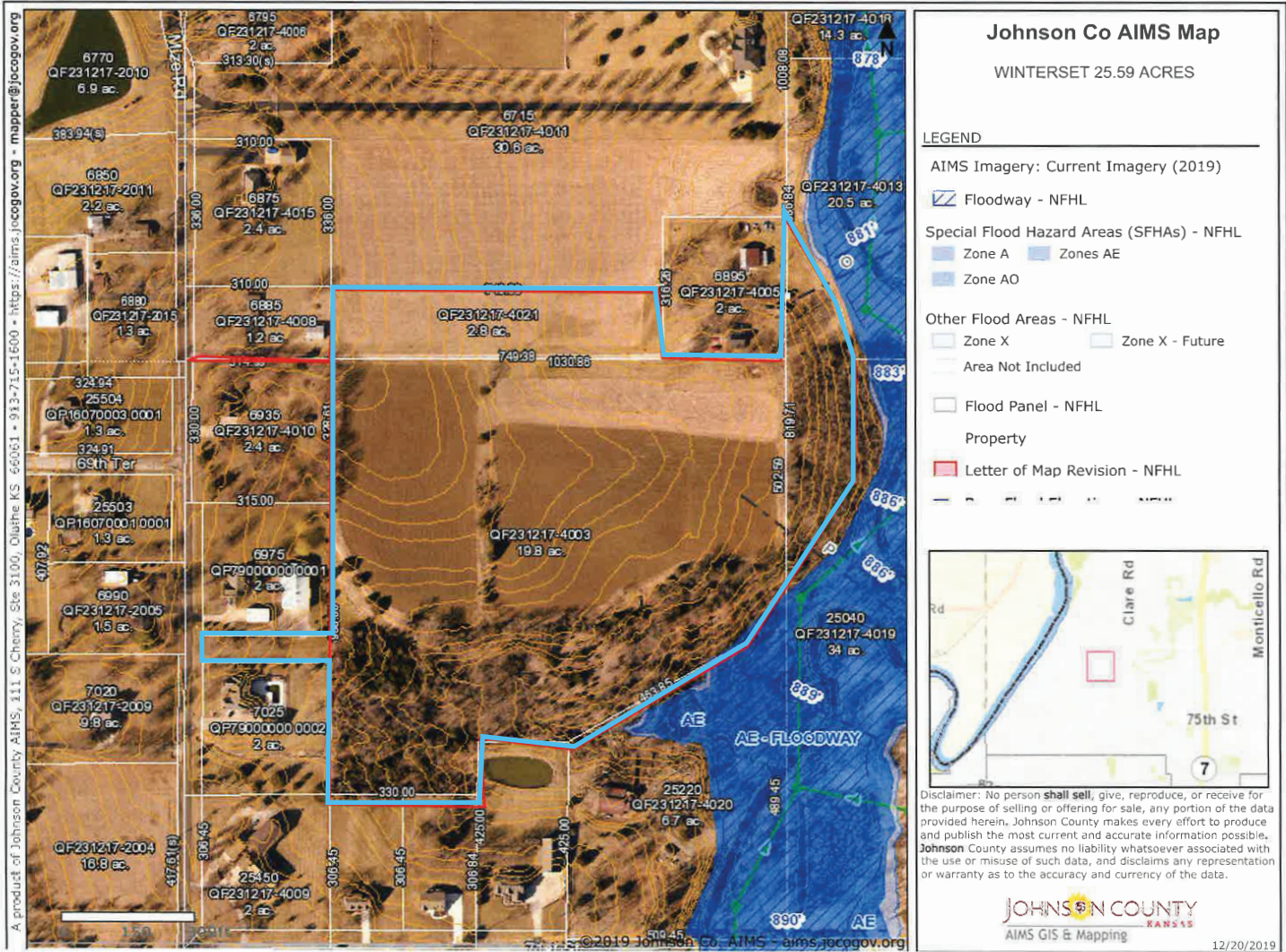
AERIAL FACING NORTH

AERIALS



The information in this package has been obtained from sources believed reliable. While we do not doubt its accuracy we have not verified it and make no guarantee, warranty or representation about it. It is your responsibility to independently confirm its accuracy and completeness. Any projections, opinions, assumptions, or estimates used are for example only and do not represent the current or future performance of the property. You and your advisors should conduct a careful, independent investigation of the property to determine to your satisfaction the suitability of the property for your needs. © 2020

TOPOGRAPHY & FLOOD MAP



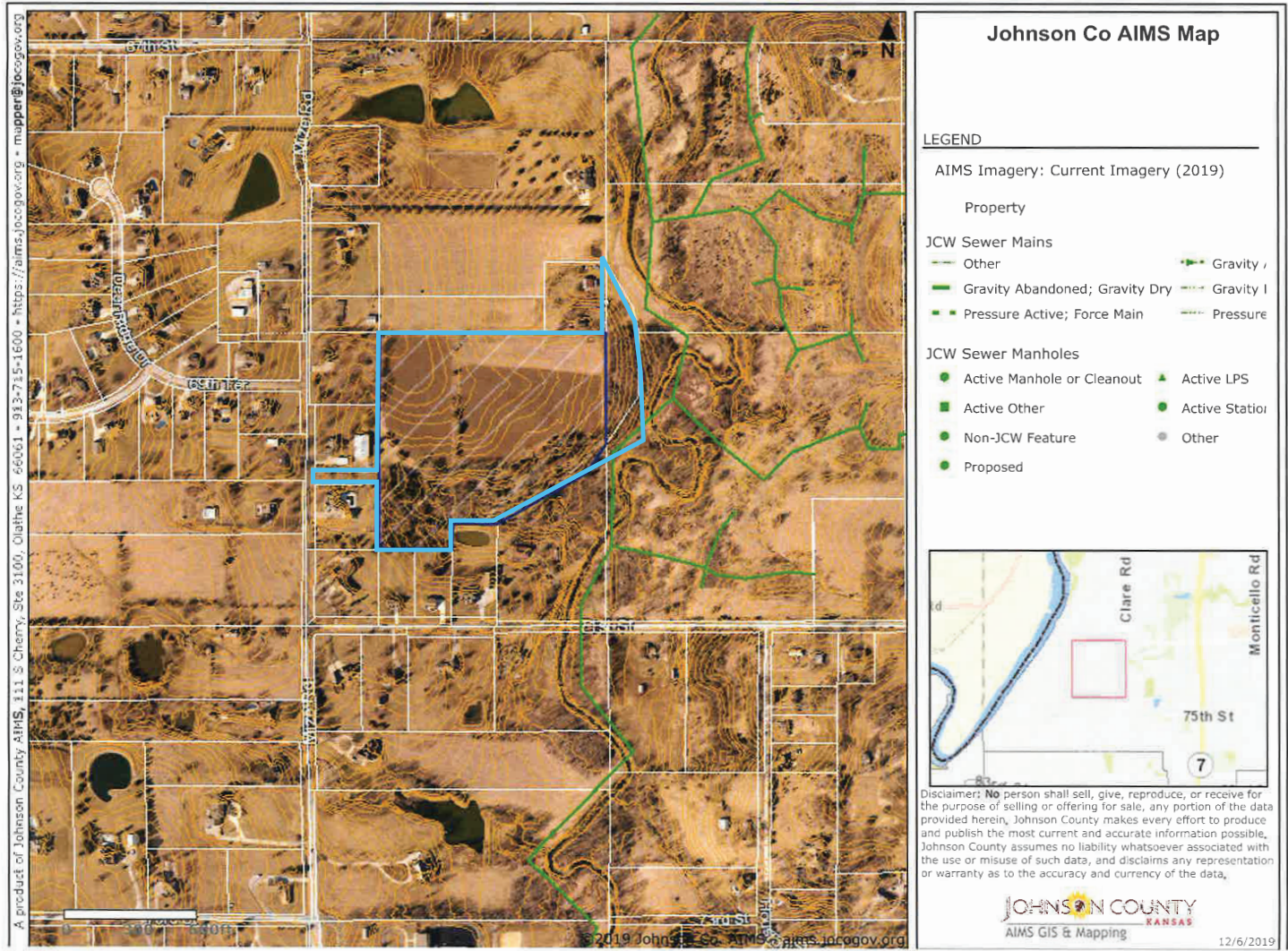
The information in this package has been obtained from sources believed reliable. While we do not doubt its accuracy we have not verified it and make no guarantee, warranty or representation about it. It is your responsibility to independently confirm its accuracy and completeness. Any projections, opinions, assumptions, or estimates used are for example only and do not represent the current or future performance of the property. You and your advisors should conduct a careful, independent investigation of the property to determine to your satisfaction the suitability of the property for your needs. © 2020



REECE
COMMERCIAL REAL ESTATE

a Berkshire Hathaway Affiliate

SEWER MAP



The information in this package has been obtained from sources believed reliable. While we do not doubt its accuracy we have not verified it and make no guarantee, warranty or representation about it. It is your responsibility to independently confirm its accuracy and completeness. Any projections, opinions, assumptions, or estimates used are for example only and do not represent the current or future performance of the property. You and your advisors should conduct a careful, independent investigation of the property to determine to your satisfaction the suitability of the property for your needs. © 2020

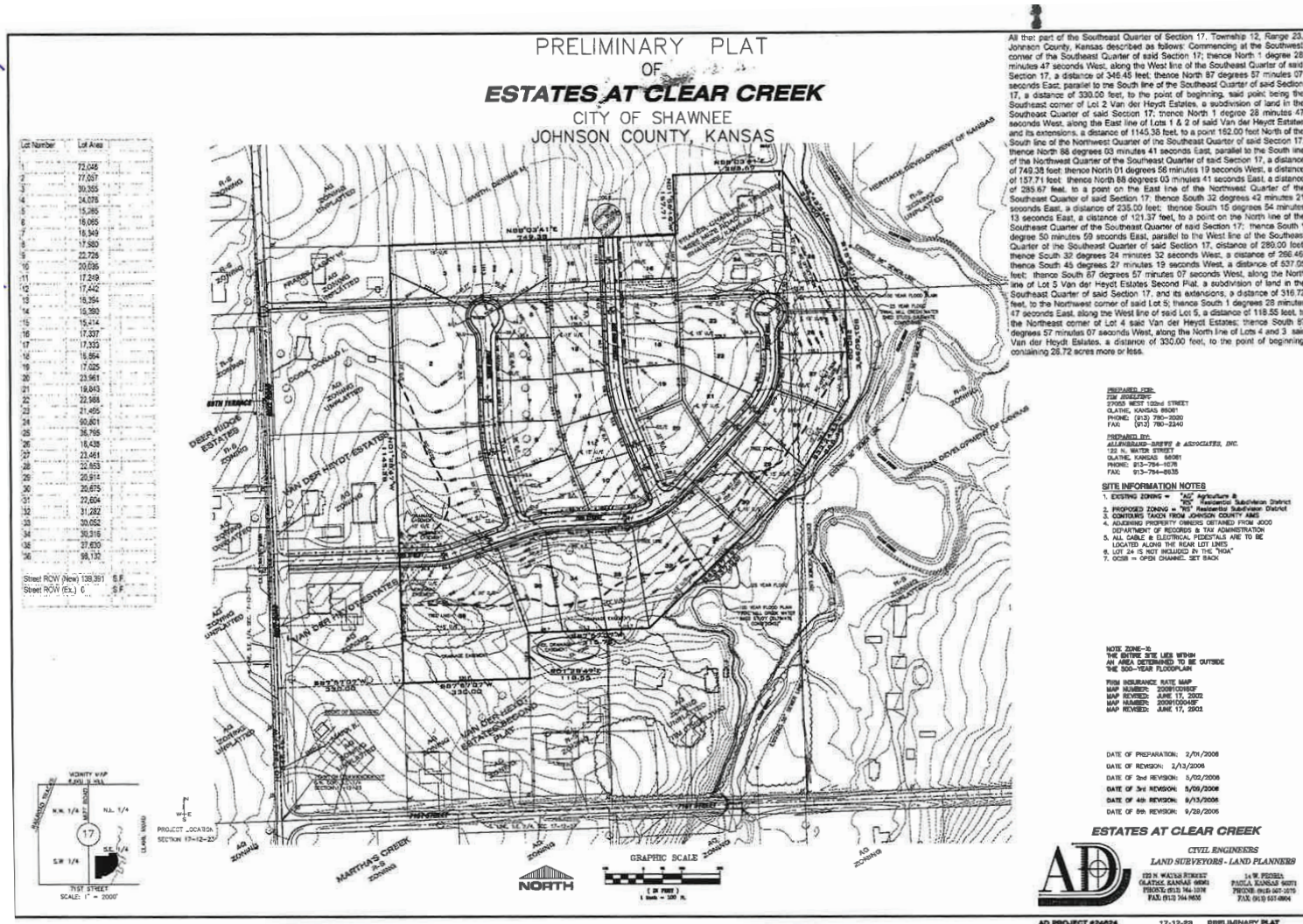


RECE
COMMERCIAL REAL ESTATE

a Berkshire Hathaway Affiliate

PLAT MAP

AERIALS



The information in this package has been obtained from sources believed reliable. While we do not doubt its accuracy we have not verified it and make no guarantee, warranty or representation about it. It is your responsibility to independently confirm its accuracy and completeness. Any projections, opinions, assumptions, or estimates used are for example only and do not represent the current or future performance of the property. You and your advisors should conduct a careful, independent investigation of the property to determine to your satisfaction the suitability of the property for your needs. © 2020