

57+/- ACRES

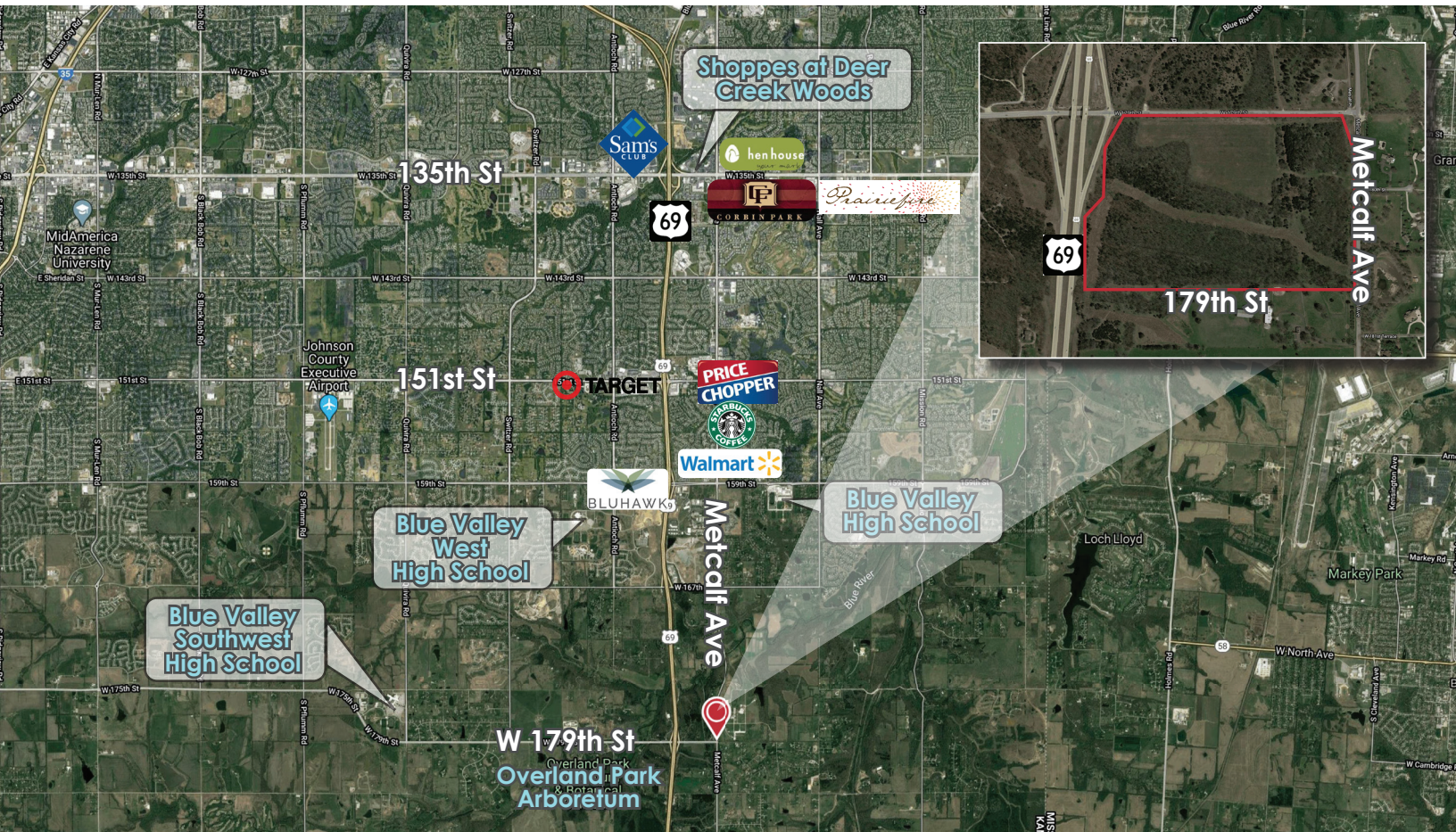
179TH ST & METCALF AVE, OVERLAND PARK, KS 66223



REECE

COMMERCIAL REAL ESTATE

a Berkshire Hathaway Affiliate



HIGHLIGHTS

- 57+/- Acres in South Overland Park
- Full Interchange at Hwy 69 & 179th St
- 1,800+/- SF Frontage Along 179th St & 1,350+/- SF Frontage on Metcalf Ave & Hwy 69
- Utilities to Site
- Tremendous Development Site for Retail/Commercial/Medical/Office/Residential

FOR SALE

\$6,000,000 (\$2.41/SF)

DEMOGRAPHICS

	1 Mile	2 Mile	3 Mile
2019 AVE HOUSEHOLD INCOME	\$159,926	\$150,238	\$176,625

John Sweeney, CCIM

Office: 913-945-3718

Mobile: 913-461-6326

Email: john@reececommercial.com

Matt Falk

Office: 913-266-6611

Mobile: 913-832-4535

Email: mattf@reececommercial.com

The information above has been obtained from sources believed reliable. While we do not doubt its accuracy we have not verified it and make no guarantee, warranty or representation about it. It is your responsibility to independently confirm its accuracy and completeness. Any projections, opinions, assumptions, or estimates used are for example only and do not represent the current or future performance of the property. You and your advisors should conduct a careful, independent investigation of the property to determine to your satisfaction the suitability of the property for your needs.

© 2020

PHOTOS

179TH ST & METCALF AVE, OVERLAND PARK, KS 66223



REECE

COMMERCIAL REAL ESTATE

a Berkshire Hathaway Affiliate



John Sweeney, CCIM

Office: 913-945-3718

Mobile: 913-461-6326

Email: john@reececommercial.com

Matt Falk

Office: 913-266-6611

Mobile: 913-832-4535

Email: mattf@reececommercial.com

The information above has been obtained from sources believed reliable. While we do not doubt its accuracy we have not verified it and make no guarantee, warranty or representation about it. It is your responsibility to independently confirm its accuracy and completeness. Any projections, opinions, assumptions, or estimates used are for example only and do not represent the current or future performance of the property. You and your advisors should conduct a careful, independent investigation of the property to determine to your satisfaction the suitability of the property for your needs.

© 2020