

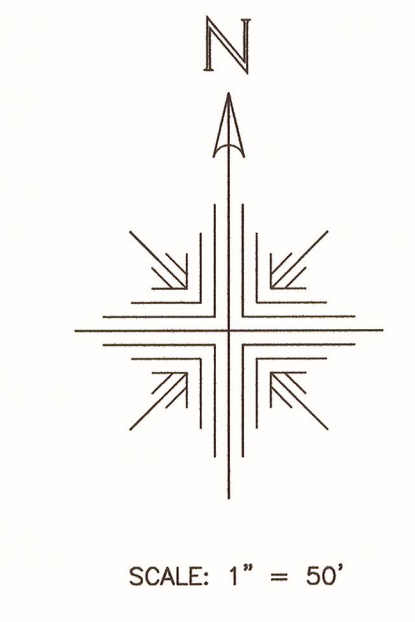
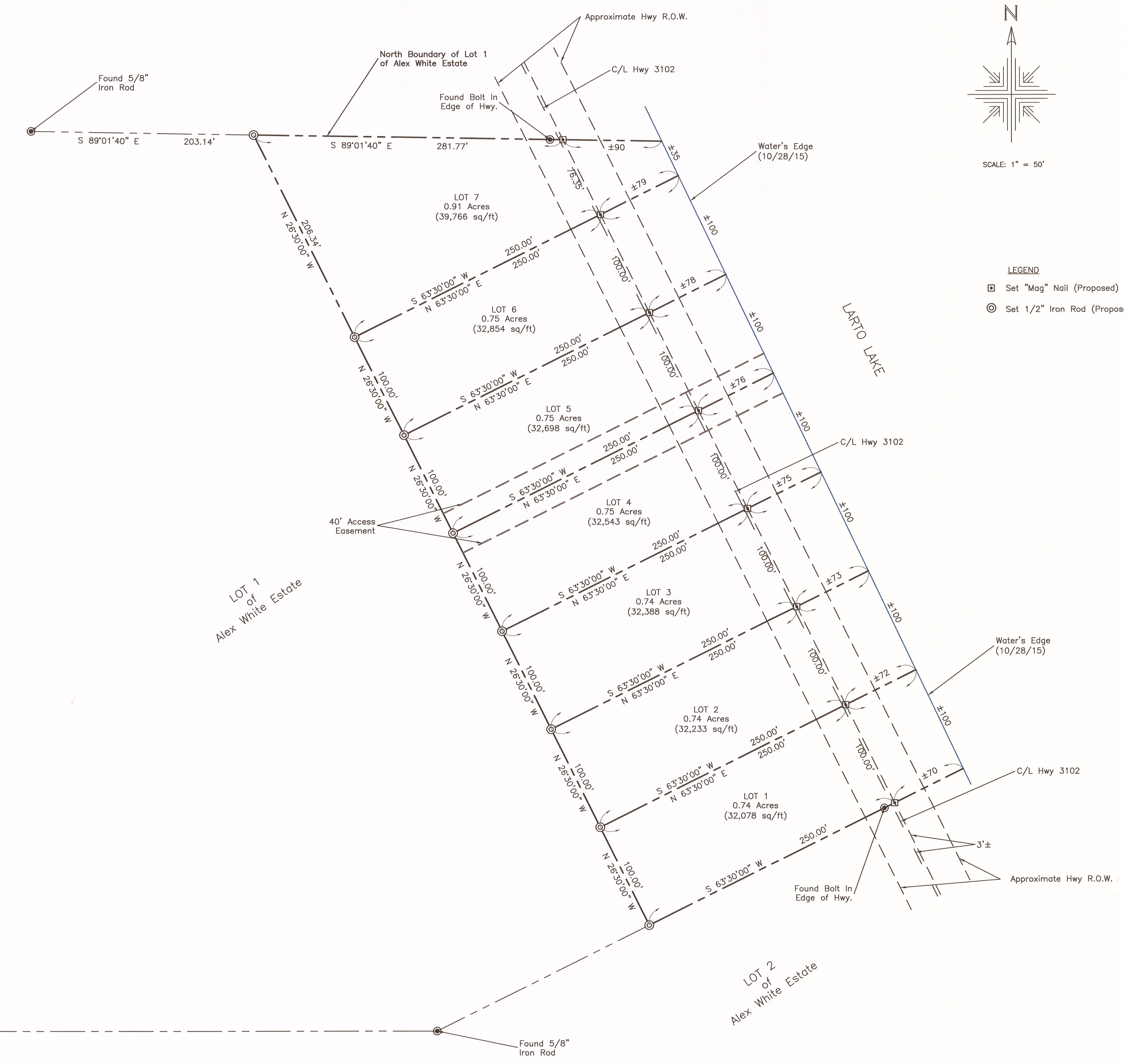
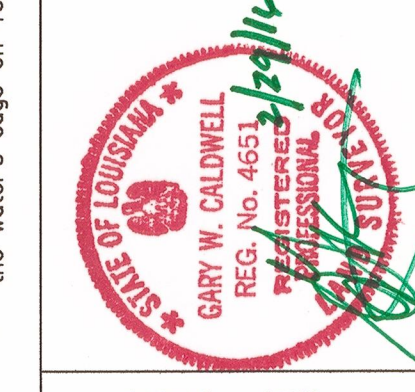
ISLAND HEAD SUBDIVISION
 BEING A PORTION OF LOT 1 OF THE
 ALEX WHITE PARTITION
 SECTION 6, T4N-R6E
 CATAHOULA PARISH, LA

DATE: 1/21/2016
 DRAWN BY: PES
 FB 108
 DESIGNED FOR: Joe McPherson
 CHECKED BY: GWC

BRYANT HAMMETT & ASSOCIATES, LLC
 CIVIL ENGINEERING & LAND SURVEYING



NO.	DESCRIPTION	BY



- LEGEND**
- Set "Mag" Nail (Proposed)
 - ⊙ Set 1/2" Iron Rod (Proposed)

NOTES: 1) Bearings based on Reference plat entitled "Alex White Partition, recorded in Plat Cabinet, A" envelope A-322 in the records of Catahoula Parish, LA. This survey was made from the monument locations shown on the plat. 2) The monument locations shown on the plat are the same as those shown on the plat. 3) The monument locations shown on the plat are the same as those shown on the plat. 4) The monument locations shown on the plat are the same as those shown on the plat.