

COUNTY

COUNTY

ANDERSON

N38°42'58"E 681.59'

N23°11'17"E 307.89'

N15°05'04"E 301.17'

N07°23'03"E 318.97'

N18°01'36"E 442.04'

N18°16'23"E 582.92'

N17°13'05"W 55.36'

N16°30'15"E 108.83'

N38°42'14"E 29.98'

ADJ. CALL: WEST 1269.34 ACT.: S89°59'52"E 1314.67'

FMC 1 1/2" IRON PEG

CALL: 148.172 AC.  
VOL. 1468, PG. 707

ADJ. CALL: N28°15'51"W 882.50'  
ACT.: S38°16'30"E 882.51'

FMC 1 1/2" IRON ROD

CALL: 512.085 AC.  
VOL. 2432, PG. 317

ACT.: S01°25'05"E 3255.13'

STONE FUEL CO. EASEMENT  
573, PG. 475

50.00' EASEMENT VOL. 2382, PG. 628

GRAVEL COUNTY  
ROAD NO. 2713

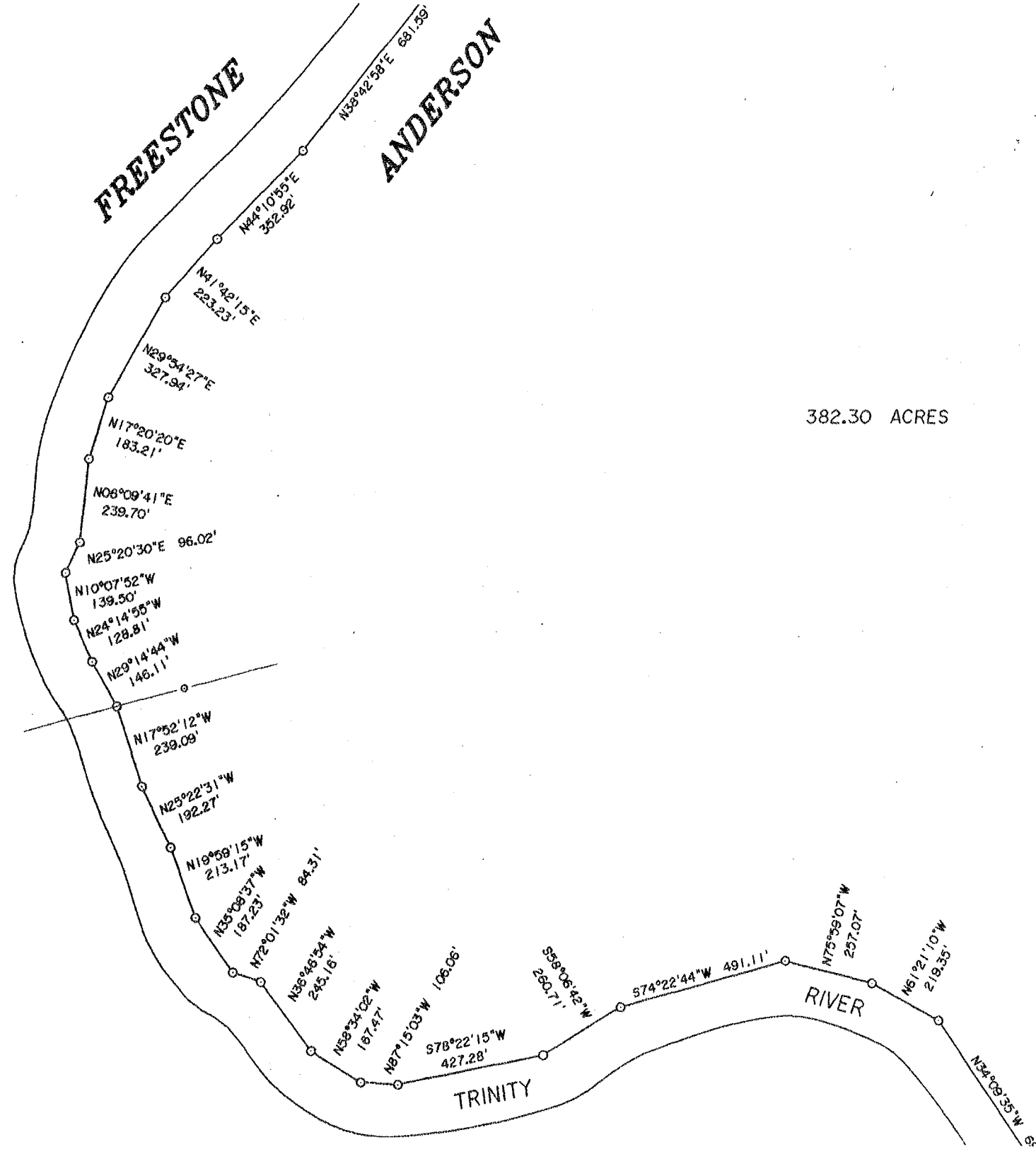


0 AC.

FREESTONE

ANDERSON

382.30 ACRES



BI-STONE FUEL CO. EASEMENT  
VOL. 573, PG. 475

TEXAS UTILITIES ELECTRIC COMPANY  
12.75 AC. EASEMENT  
VOL. 1312, PG. 125

CALL: 2.065 AC.  
VICTOR WUNDERLICH ET UX  
TO  
ROBERT F. MCFARLANE  
JAN. 24, 2001 VOL. 1654, PG. 607

FND. 1/2" IRON ROD

S49°07'48"E 868.44'

ADJ. CALL: N1°25'03"W 3255.08'

FND. 1/2" IRON ROD

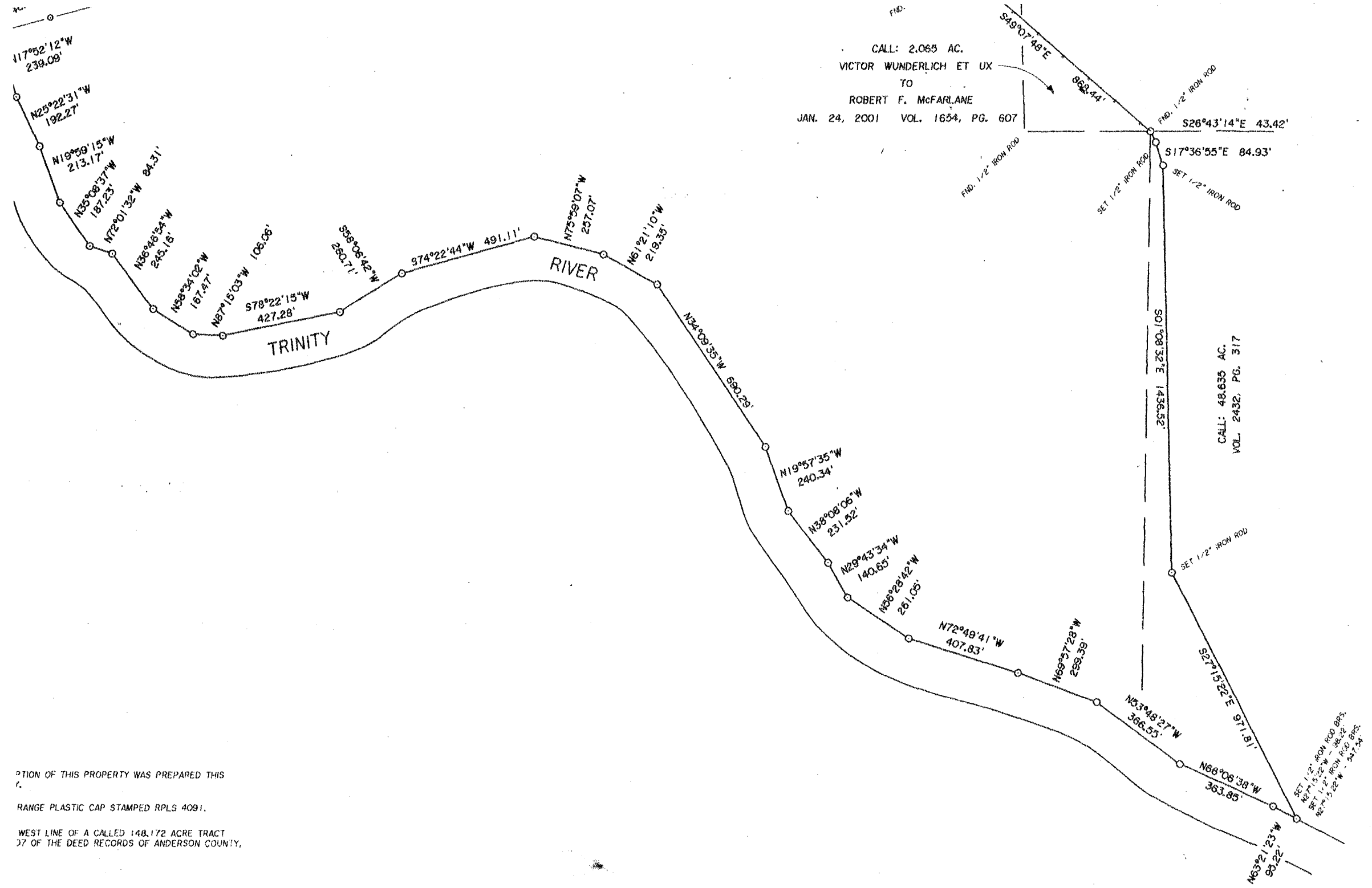
SET 1/2" IRON ROD

FND. 1/2" S.

S17°

S01°08'32"E

CALL: 2.065 AC.  
 VICTOR WUNDERLICH ET UX  
 TO  
 ROBERT F. McFARLANE  
 JAN. 24, 2001 VOL. 1654, PG. 607



OPTION OF THIS PROPERTY WAS PREPARED THIS  
 RANGE PLASTIC CAP STAMPED RPLS 4091.  
 WEST LINE OF A CALLED 148.172 ACRE TRACT  
 37 OF THE DEED RECORDS OF ANDERSON COUNTY.

ED PROFESSIONAL LAND SURVEYOR, DO HEREBY DECLARE