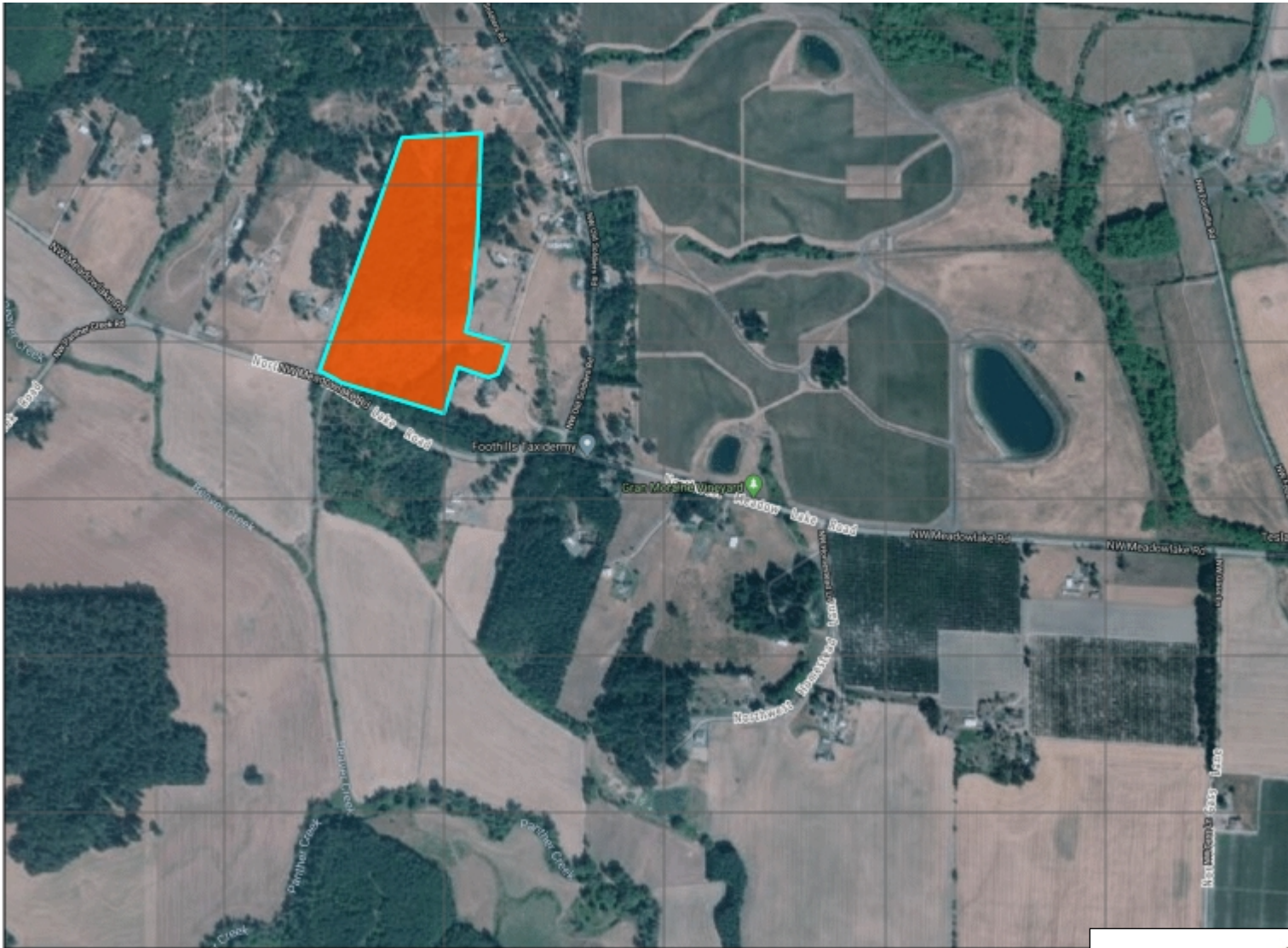


Meadowlake Road, Carlton, OR

-123°16' -123°15'40" -123°15'20" -123°15' -123°14'40"

45°18'
45°17'50"
45°17'40"
45°17'30"
45°17'20"
45°17'10"




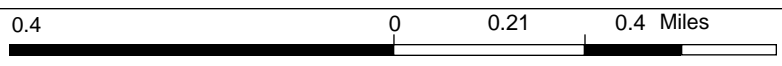
45°18'
45°17'50"
45°17'40"
45°17'30"
45°17'20"
45°17'10"



30 acres
vineyard
suitable
Carlton, OR

-123°16' -123°15'40" -123°15'20" -123°15' -123°14'40"

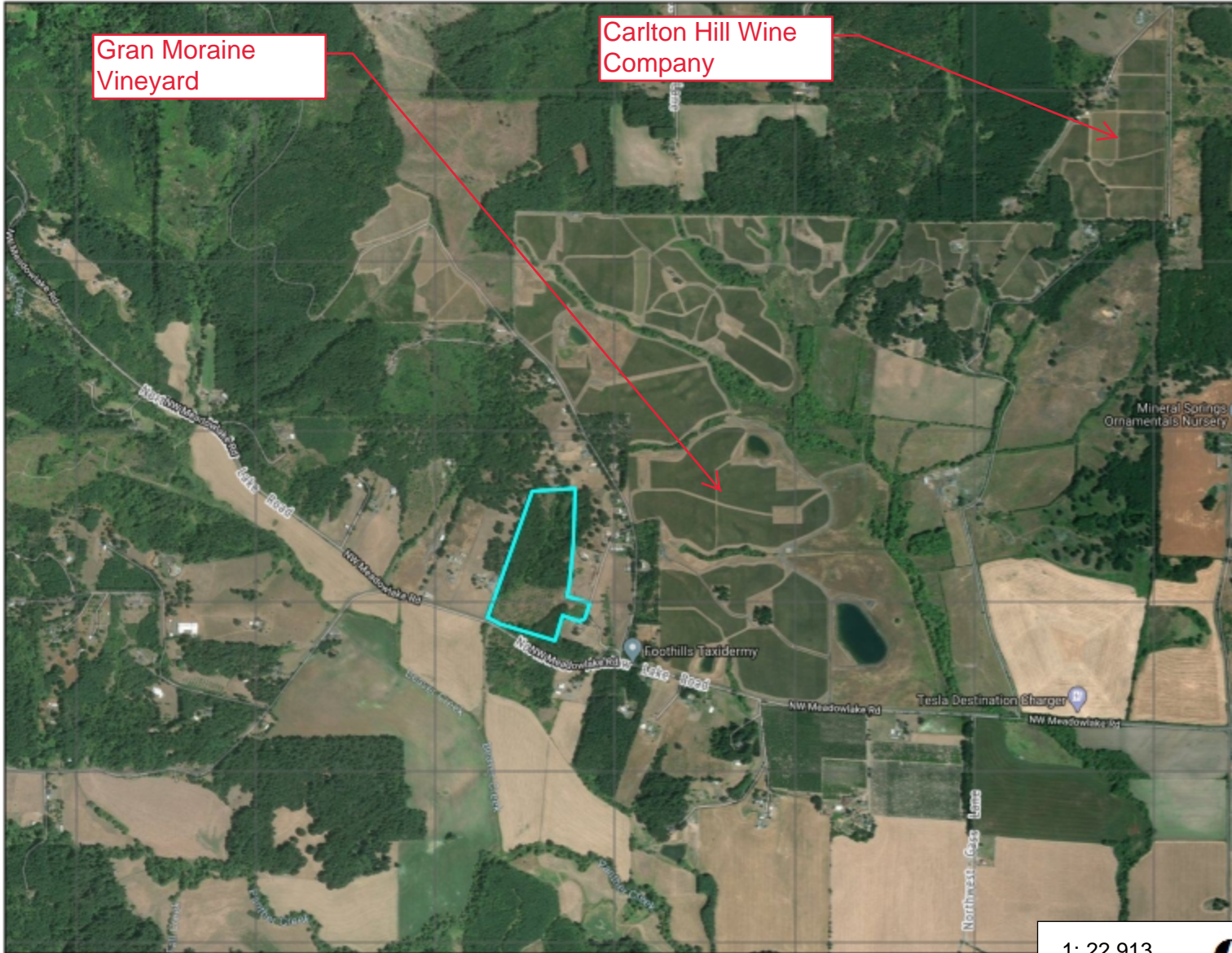
1: 13,000 



Meadowlake Road, Carlton, OR

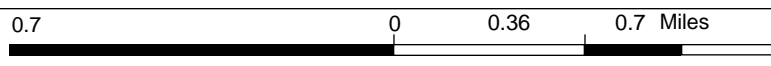
-123°17' -123°16'30" -123°16' -123°15'30" -123°15' -123°14'30" -123°14'

45°18'40"
45°18'20"
45°18'
45°17'40"
45°17'20"
45°17'

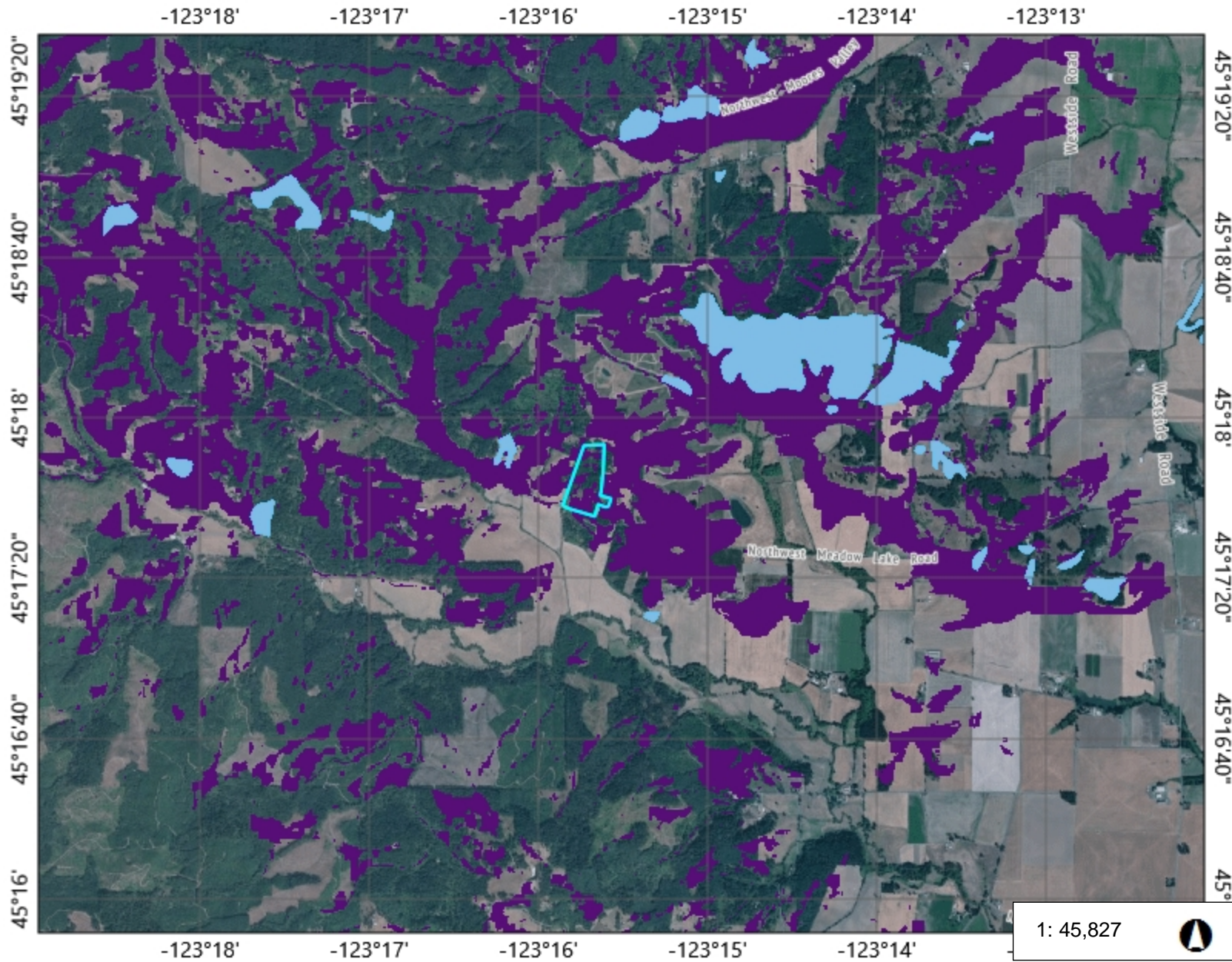


45°18'40"
45°18'20"
45°18'
45°17'40"
45°17'20"
45°17'

1: 22,913



Meadowlake Road, Carlton, OR



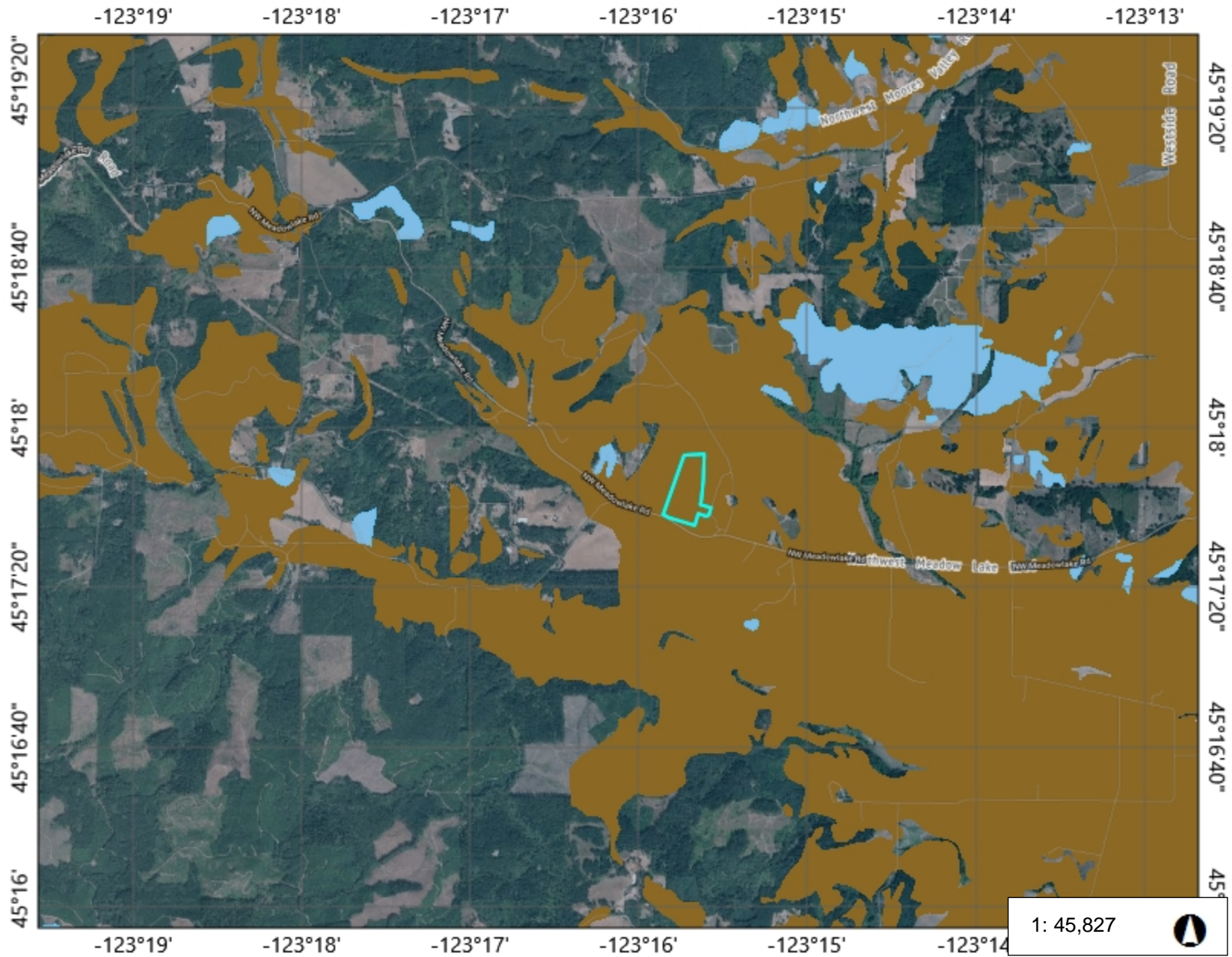
Legend

- Water/Barren
- American Viticultural Areas



Notes

AVA Map

Meadowlake Road, Carlton, OR

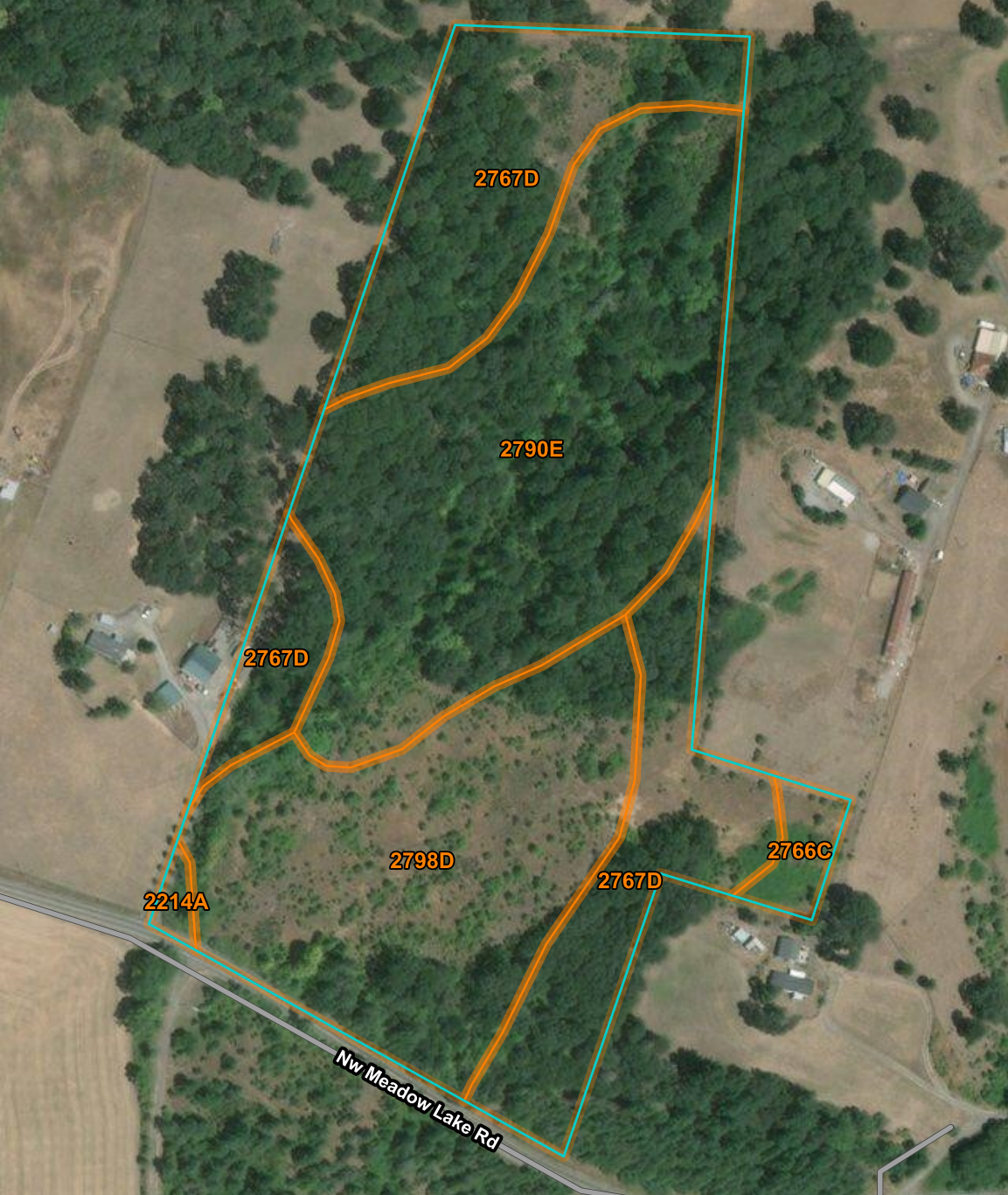


Legend

-  Water/Barren
-  High-value Farm Soils

Notes

High value soils



2767D

2790E

2767D

2214A

2798D

2767D

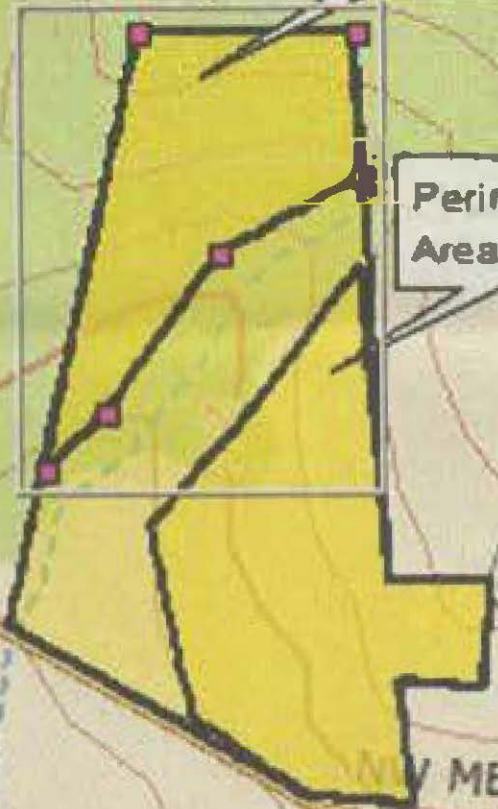
2766C

Nw Meadow Lake Rd

Map Unit Symbol	Map Unit Name	Acres in AOI	Percent of AOI
2214A	Chehalem silty clay loam, sedimentary, 0 to 3 percent slopes	0.2	0.6%
2766C	Goodin silty clay loam, 2 to 12 percent slopes	0.6	1.8%
2767D	Goodin-Melbourne complex, 12 to 20 percent slopes	9.9	31.7%
2790E	Melbourne-Goodin silty clay loams, 20 to 30 percent slopes	11.9	37.9%
2798D	Witham silty clay loam, hummocky, 2 to 25 percent slopes	8.8	27.9%
Totals for Area of Interest		31.3	100.0%

Perimeter: 3,020.5 ft
Area: 8.54 ac

Perimeter: 3,878.5 ft
Area: 12.78 ac



NW-OLD SOLDIERS

MEADOW LAKE RD

