

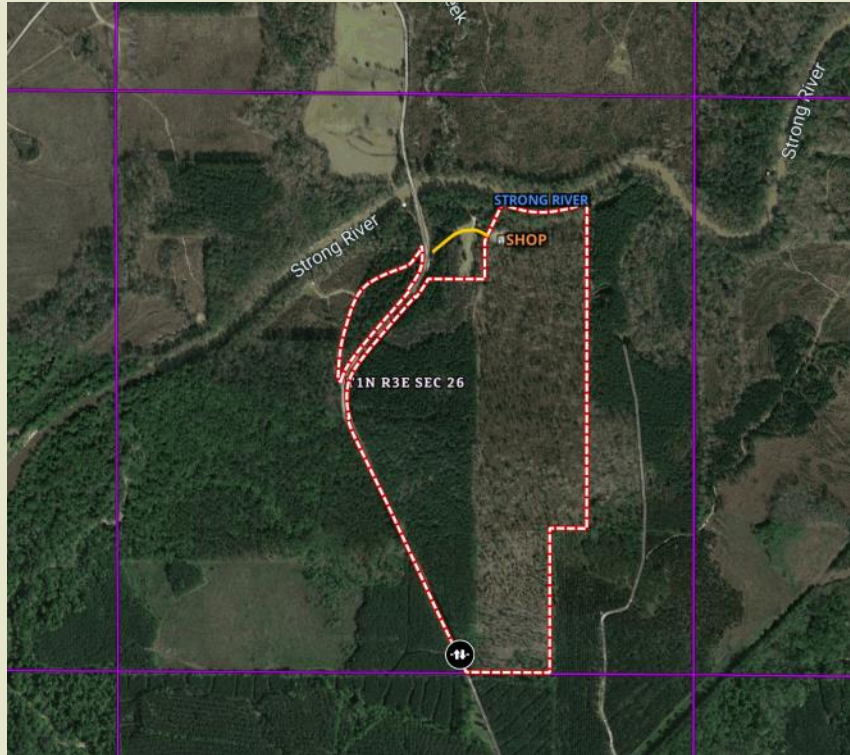


**Sartain's Heritage**  
Properties, LLC.  
www.SartainsHeritage.com

# Strong River

## 165.2 Acres +/-

### Simpson County, MS



**CONTACT:**

**JOE MALLARD**  
601-927-8222

Jmallard@sartainsheritage.com

**Sartain's Heritage Properties**

106 First Choice Drive  
Madison, MS 39110

Phone: 601-856-2720

Fax: 601-853-6765

www.SartainsHeritage.com

**Property:** Strong River Tract, 155 +/- acres located one mile north of Pinola, MS on Robert Bush Road. North property line adjoins the south bank of the Strong River for approximately 800 feet. Property consist of 95 +/- acres of mixed pine and hardwood timber that has been thinned once and 67 +/- acres of pine plantation planted in 2001. Road frontage along Robert Bush Road, and easement access on the North end of the tract.

**Improvements:** 40x75 Metal Shop. Concrete floor and roll up doors with 15-foot side shed.

**Location:** Section 26, Township 1 North, Range 3 East Simpson County, Mississippi. One mile North of Pinola, MS. West side of Robert Bush Road.

**Price: \$298,000**

**Contact:** Joe R. Mallard 601-927-8222



All information contained herein is supplied by sources deemed reliable, but is not guaranteed by Sartain's Heritage Properties, its Brokers or Agents. Properties are subject to errors, omissions, correction, price change, prior sale or withdrawal without notice.