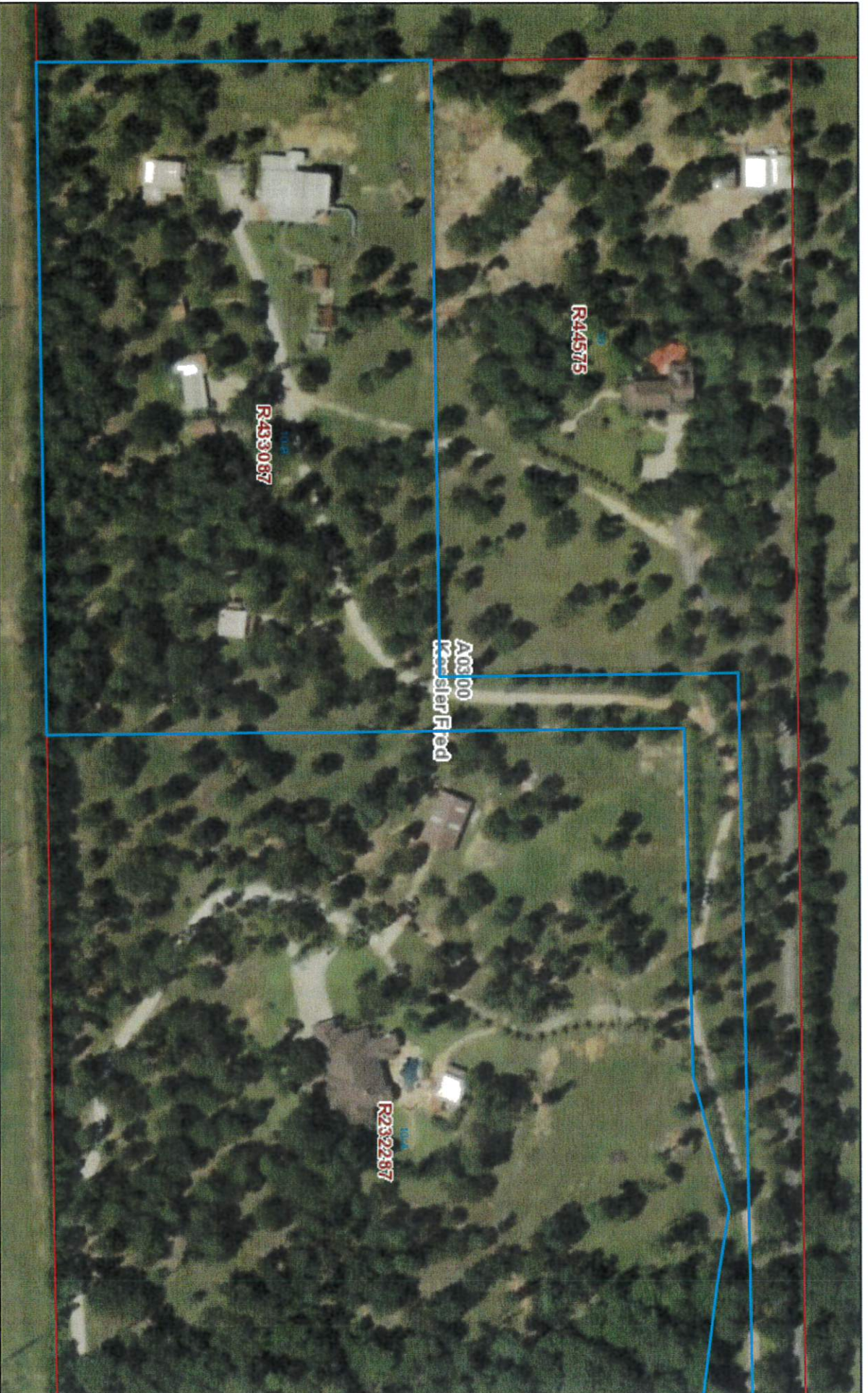

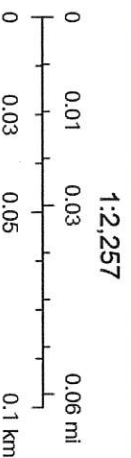


# 12633 Pearson Rd



8/12/2020, 11:21:12 AM

 Parcels



Source: Esri, Maxar, GeoEye, Earthstar, Geographics, CNES/Airbus DS,

Montgomery County Appraisal District, BIS Consulting -  
Disclaimer: This product is for informational purposes only and has not been prepared for or be suitable for legal, engineering, or surveying purposes. It does not represent an on-the-ground survey and represents only the approximate relative location of boundaries.