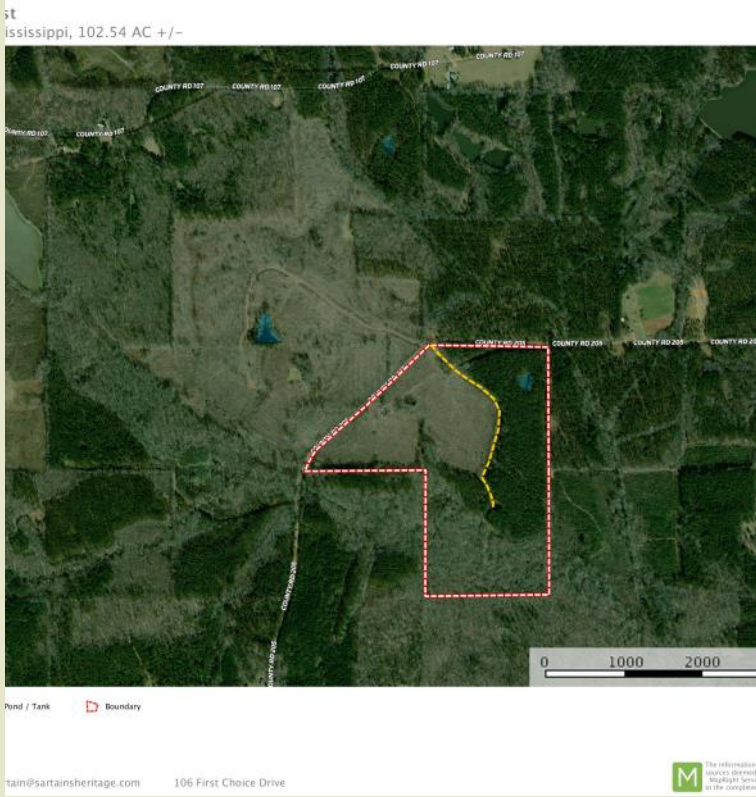




Sartain's Heritage
Properties, LLC.
www.SartainsHeritage.com

Spring Creek East 102.54 Acres +/- Webster County, MS



CONTACT:
J. PARKER SARTAIN
601.506.2398
psartain@sartainsheritage.com

Sartain's Heritage Properties
106 First Choice Drive
Madison, MS 39110
Phone: 601-856-2720
Fax: 601-853-6765
www.SartainsHeritage.com

EXCLUSIVE PARTNER OF
LAND LEADER

Spring Creek East
102.54 acres in Sections 23 and 26, T21N, R10E, Webster County, MS, 10 miles north of Eupora. The property has approximately 1900 feet of frontage on County Road 205 (Buster Vaughn Road) along the west boundary. The timber consists of 35 acres of one year replanted pines with the balance in older age pines and hardwood Streamside Management Zones along Spring Creek creating a wildlife travel corridor through the property for deer hunting and turkey hunting. There is one small pond, and an interior road into the heart of the property. An additional 119 acres is available on the west side of County Road 205. Being located only 26 miles west of Starkville, this a great recreational tract close to MSU sporting events and dining at the numerous restaurants in town.

\$1900.00 per acre/ \$194,826.00

All information contained herein is supplied by sources deemed reliable, but is not guaranteed by Sartain's Heritage Properties, its Brokers or Agents. Properties are subject to errors, omissions, correction, price change, prior sale or withdrawal without notice.



All information contained herein is supplied by sources deemed reliable, but is not guaranteed by Sartain's Heritage Properties, its Brokers or Agents. Properties are subject to errors, omissions, correction, price change, prior sale or withdrawal without notice.



All information contained herein is supplied by sources deemed reliable, but is not guaranteed by Sartain's Heritage Properties, its Brokers or Agents. Properties are subject to errors, omissions, correction, price change, prior sale or withdrawal without notice.