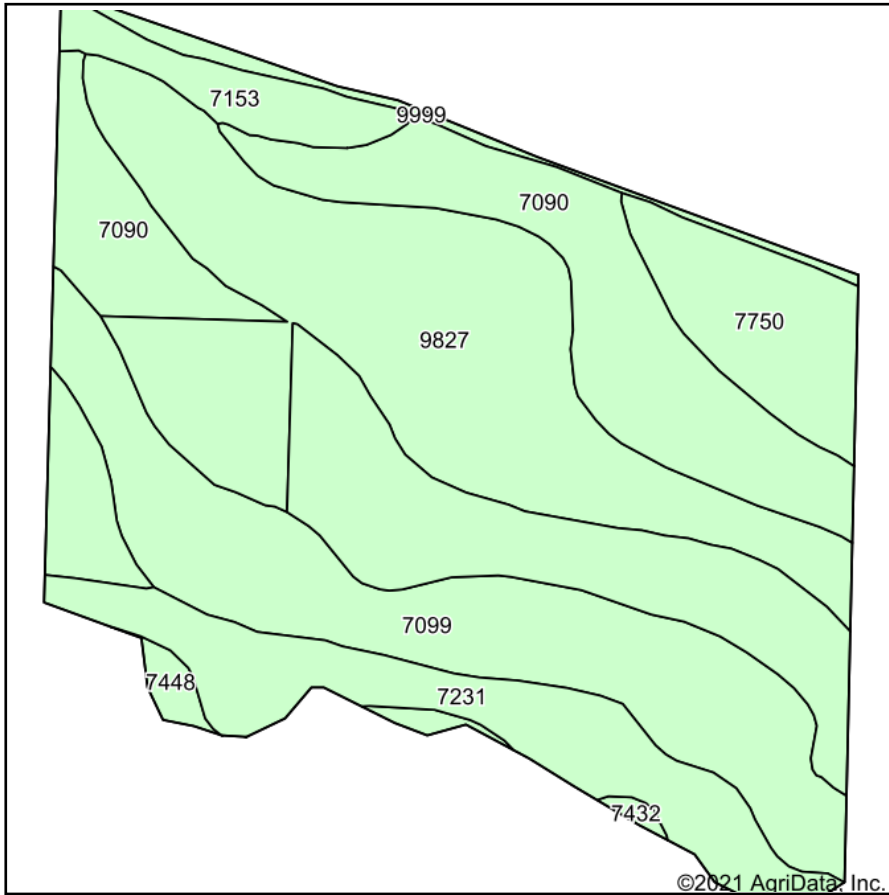
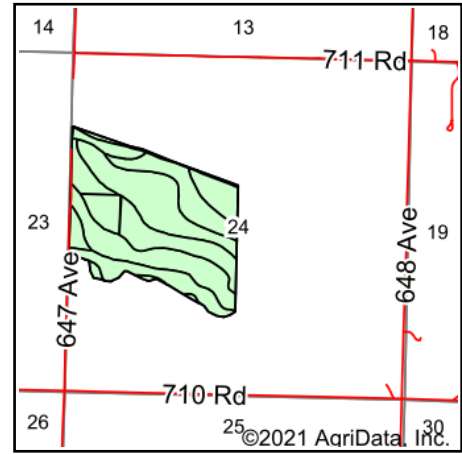


Soils Map



Soils data provided by USDA and NRCS.



State: **Nebraska**
 County: **Richardson**
 Location: **24-2N-15E**
 Township: **Liberty**
 Acres: **123.85**
 Date: **2/16/2021**

Maps Provided By:



Code	Soil Description	Acres	Percent of field	Non-Irr Class *c	Irr Class *c	SRPG	Alfalfa hay	Alfalfa hay Irrigated	Bromegrass alfalfa	Bromegrass alfalfa Irrigated	Corn	Corn Irrigated	Grain sorghum	Grain sorghum Irrigated	Soybeans	Soybean Irrigated
7090	Wabash silty clay loam, occasionally flooded	36.27	29.3%	IIIw		51										
9827	Slickspots-Wabash complex	33.25	26.8%	IVs	IVs	35	3				48		53		25	
7099	Zook silty clay loam, occasionally flooded	23.17	18.7%	IIw	IIw	60	5	6	5	13	94	137	87	120	38	
7231	Judson silt loam, 2 to 6 percent slopes	12.89	10.4%	IIe		79										
7750	Nodaway silt loam, occasionally flooded	7.76	6.3%	IIw	IIw	77										
7153	Kennebec silt loam, rarely flooded	7.06	5.7%	Iw		83										
9999	Water	1.85	1.5%			0										
7448	Morrill soils, 11 to 17 percent slopes	1.31	1.1%	VIe		60										
7432	Morrill soils, 6 to 11 percent slopes, severely eroded	0.29	0.2%	IVe	IVe	68										
Weighted Average						54.1	1.7	1.1	0.9	2.4	30.5	25.6	30.5	22.4	13.8	

*n: The aggregation method is "Weighted Average using all components"

*c: Using Capabilities Class Dominant Condition Aggregation Method

Soils data provided by USDA and NRCS.