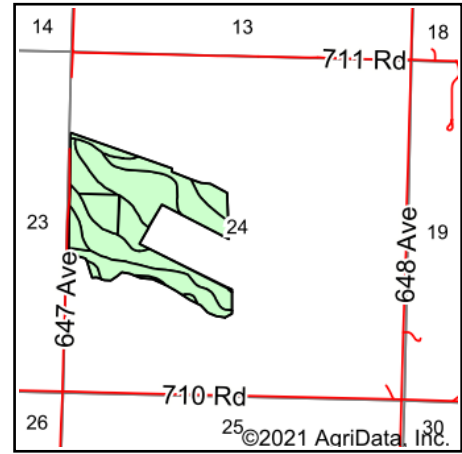
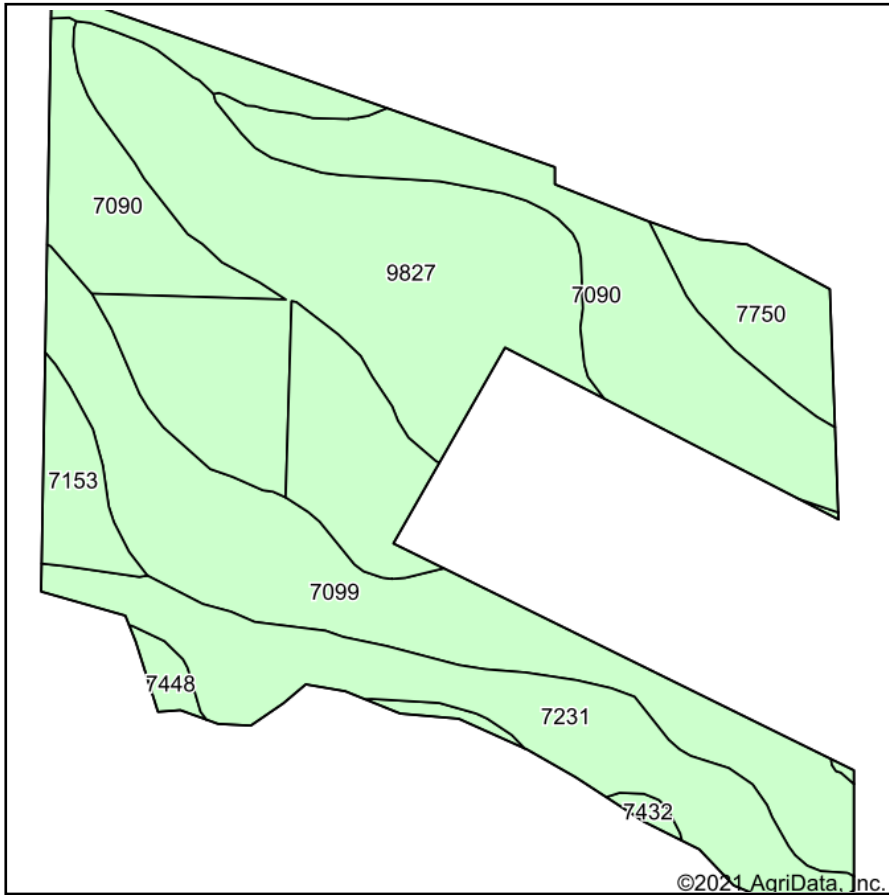


Soils Map



State: **Nebraska**
 County: **Richardson**
 Location: **24-2N-15E**
 Township: **Liberty**
 Acres: **88.83**
 Date: **2/16/2021**

Soils data provided by USDA and NRCS.



Code	Soil Description	Acres	Percent of field	Non-Irr Class *c	Irr Class *c	SRPG	Alfalfa hay	Alfalfa hay Irrigated	Bromegrass alfalfa	Bromegrass alfalfa Irrigated	Corn	Corn Irrigated	Grain sorghum	Grain sorghum Irrigated	Soybeans	Soybean Irrigated
9827	Slickspots-Wabash complex	25.04	28.2%	IVs	IVs	35	3				48		53			25
7090	Wabash silty clay loam, occasionally flooded	23.34	26.3%	IIIw		51										
7099	Zook silty clay loam, occasionally flooded	17.48	19.7%	IIw	IIw	60	5	6	5	13	94	137	87	120	38	
7231	Judson silt loam, 2 to 6 percent slopes	12.68	14.3%	IIe		79										
7153	Kennebec silt loam, rarely flooded	4.89	5.5%	Iw		83										
7750	Nodaway silt loam, occasionally flooded	3.97	4.5%	IIw	IIw	77										
7448	Morrill soils, 11 to 17 percent slopes	1.10	1.2%	VIe		60										
7432	Morrill soils, 6 to 11 percent slopes, severely eroded	0.33	0.4%	IVe	IVe	68										
Weighted Average						55.4	1.8	1.2	1	2.6	32	27	32.1	23.6	14.5	

*n: The aggregation method is "Weighted Average using all components"

*c: Using Capabilities Class Dominant Condition Aggregation Method

Soils data provided by USDA and NRCS.