

STATE OF _____ COUNTY OF _____

I HEREBY CERTIFY THAT ON THIS DAY PERSONALLY APPEARED BEFORE ME, THE UNDERSIGNED AUTHORITY, JULIUS WEINSTEIN, PRESIDENT AND PAUL FISCHER, SECRETARY OF HIGHLANDS GREENS, INC., TO ME WELL KNOWN TO BE THE PERSONS DESCRIBED IN AND WHO EXECUTED THE FOREGOING INSTRUMENT AND WHO ACKNOWLEDGED THE SAME TO BE THEIR FREE AND VOLUNTARY ACT AS SUCH OFFICERS OF SAID CORPORATION FOR THE USES AND PURPOSES THEREIN EXPRESSED. THAT THEY AFFIXED THEREON THE ORIGINAL SEAL OF SAID CORPORATION AND WITHIN THE AUTHORITY OF THE BOARD OF DIRECTORS OF SAID CORPORATION AND THAT SAID INSTRUMENT WAS DULY FILED AND RECORDED IN THE PUBLIC RECORDS OF SAID COUNTY, FLORIDA, ON _____ DAY OF _____, A.D. 1957.

NOTARY PUBLIC, STATE OF _____

THIS PLAT WAS APPROVED AND ACCEPTED BY RESOLUTION, PASSED AND ADOPTED BY THE BOARD OF COUNTY COMMISSIONERS OF HIGHLANDS COUNTY, FLORIDA, THIS _____ DAY OF _____, A.D. 1957.

ATTEST: _____ CLERK OF THE CIRCUIT COURT
SIGNED: _____ CHAIRMAN OF THE BOARD

BY: _____ DEPUTY CLERK

HIGHLANDS PARK

SECTION L

A SUBDIVISION OF A PORTION OF SECTION 21, TWP 36S., RANGE 30 E. HIGHLANDS COUNTY, FLORIDA

SHEET 1 OF 3 SHEETS

SCALE IN FEET
0 100 200 300

ENGINEERS NOTE
DISTANCES ON CORNER LOTS ARE TO INTERSECTION OF LINES UNLESS OTHERWISE INDICATED.
ALL HAZARD ARE 25 FEET UNLESS OTHERWISE INDICATED.
● INDICATES PERMANENT REFERENCE MONUMENT.
○ FOR LOCATION MAP SEE SHEET 2 OF 3 SHEETS.

JAMES F. MCLURE, JR. & ASSOCIATES
ENGINEERS
LAKE PLACID, FLORIDA
DATE: DECEMBER 31, 1957
SCALE: 1" = 100'
SURVEY BY: P.H.H. DRAWN BY: L.G.F.
CHECKED BY: R.G.
APPROVED: _____
JAMES F. MCLURE, JR., REG. NO. 780.

I, H. T. PIETY, CLERK OF CIRCUIT COURT OF HIGHLANDS COUNTY, FLORIDA, DO HEREBY CERTIFY THAT I HAVE EXAMINED THIS PLAT AND FIND THAT IT COMPLIES IN FORM AND WITH THE REQUIREMENTS OF LAWS OF THE STATE OF FLORIDA REGULATING THE MAKING OF SURVEYS AND PLATING FOR RECORD, OF MAPS AND PLATS, AND HAVE THIS DAY FILED THE SAME FOR RECORD IN BOOK _____ OF PLATS PAGE _____ IN THE PUBLIC RECORDS OF SAID COUNTY, FLORIDA, THIS _____ DAY OF _____, A.D. 1957.

H. T. PIETY
CLERK OF THE CIRCUIT COURT

BY: _____ DEPUTY CLERK

IN WITNESS WHEREOF, THE SAID HIGHLANDS GREENS, INC. HAS CAUSED THESE PRESENTS TO BE SIGNED IN ITS CORPORATE NAME BY ITS PRESIDENT AND ITS CORPORATE SEAL TO BE AFFIXED HERETO BY ITS SECRETARY THIS _____ DAY OF _____, A.D. 1957.

PAUL FISCHER, SECRETARY
HIGHLANDS GREENS, INC.
JULIUS WEINSTEIN, PRESIDENT

JAMES F. MCLURE, JR. & ASSOCIATES
BY: _____
REGISTERED PROFESSIONAL SURVEYOR, NO. 780
STATE OF FLORIDA

WE HEREBY CERTIFY THAT THE ATTACHED PLAT ENTITLED "HIGHLANDS PARK, SECTION L," IS A TRUE AND CORRECT REPRESENTATION OF THE LAND AS RECENTLY SURVEYED AND PLATTED UNDER OUR DIRECTION; ALSO THAT THE PERMANENT REFERENCE MONUMENTS WERE SET ON THE _____ DAY OF _____, A.D. 1957, IN ACCORDANCE WITH SECTION 7, CHAPTER 10275 (NO. 283) LAWS OF THE STATE OF FLORIDA.

EASEMENTS AND RIGHTS OF WAY ARE EXPRESSLY RESERVED FOR THE CONSTRUCTION, INSTALLATION AND MAINTENANCE OF UTILITIES SUCH AS ELECTRIC LIGHT AND TELEPHONE LINES, DRAINS, WATER SUPPLY LINES NECESSARY OR DESIRABLE FOR THE PUBLIC HEALTH AND WELFARE. SUCH EASEMENTS AND RIGHTS OF WAY SHALL BE CONVEYED TO THE PUBLIC BY THE SAID HIGHLANDS GREENS, INC. TO THE EXTENT OF THE RIGHTS AND INTERESTS OF EVERY SHARED STREET, ROAD OR HIGHWAY FRONTING ON THE SAID PREMISES.

KNOW ALL MEN BY THESE PRESENTS: THAT HIGHLANDS GREENS, INC., A FLORIDA CORPORATION, HAS CAUSED TO BE MADE THE ATTACHED PLAT ENTITLED "HIGHLANDS PARK, SECTION L," THE SAME BEING A SUBDIVISION OF PORTIONS OF SECTION 21, TOWNSHIP 36 SOUTH, RANGE 30 EAST, HIGHLANDS COUNTY, FLORIDA, AND MORE PARTICULARLY DESCRIBED AS FOLLOWS: BEGINNING AT THE NORTHEAST CORNER OF SECTION 21, TWP. 36S., R. 30E., THENCE RUN IN A SOUTHWESTLY DIRECTION S 24°42'20"E ALONG THE EAST LINE OF SAID SECTION 21, 178.385, 192.30E., A DISTANCE OF 999.21 FEET TO A POINT IN THE CENTERLINE OF LINDBERG AVE.; AS THE SAME IS SHOWN ON THE PLAT OF "HIGHLANDS PARK, SECTION J," AND RECORDED IN PLAT BOOK 5 PAGE 44, PUBLIC RECORDS OF HIGHLANDS COUNTY, FLORIDA; THENCE RUN IN A SOUTHWESTLY DIRECTION S 79°21'02"W ALONG CENTERLINE OF SAID LINDBERG AVE., A DISTANCE OF 982.0 FEET TO A POINT; THENCE S 88°23'38"W ALONG CENTERLINE OF SAID LINDBERG AVE., A DISTANCE OF 202.5 FEET TO A POINT; SAID POINT BEING THE POINT OF BEGINNING OF THE PLAT OF "HIGHLANDS PARK, SECTION L," AND RECORDED IN PLAT BOOK 4, PAGE 68, PUBLIC RECORDS OF HIGHLANDS COUNTY, FLORIDA; SAID POINT BEING ON A POINT OF CURVATURE OF A CIRCULAR CURVE TO THE RIGHT, THENCE RUN IN A SOUTHWESTERLY DIRECTION ALONG THE ARC OF SAID CIRCULAR CURVE TO THE RIGHT, HAVING A RADIUS OF 6070 FEET AND A CENTRAL ANGLE OF 40° FOR A DISTANCE OF 957 FEET TO A POINT OF TANGENCY; THENCE RUN S 59°42'55"W, (SHOWING 39°56'10"W ON PLAT RECORDED AS SECTION C-7) A DISTANCE OF 300 FEET TO A POINT; SAID POINT BEING A POINT OF CURVATURE OF A CIRCULAR CURVE TO THE LEFT, THENCE SOUTHWESTERLY ALONG THE ARC OF SAID CIRCULAR CURVE TO THE LEFT, HAVING A RADIUS OF 3930 FEET AND A CENTRAL ANGLE OF 13°08'57" FOR A DISTANCE OF 646.02 FEET TO A POINT IN THE CENTERLINE OF WASHINGTON BOULEVARD AS THE SAME IS SHOWN ON THE PLAT OF "HIGHLANDS PARK, SECTION C," AND RECORDED IN PLAT BOOK 4, PAGE 59, PUBLIC RECORDS OF HIGHLANDS COUNTY, FLORIDA; THENCE RUN IN A SOUTHWESTERLY DIRECTION S 35°46'24"E ALONG THE CENTERLINE OF WASHINGTON BOULEVARD, A DISTANCE OF 2752.50 FEET (SHOWING AS 2752.50 FEET IN PLAT RECORDED AS SECTION H) TO A POINT; THENCE RUN N 15°01'40"E ALONG THE CENTERLINE OF SAID BOULEVARD, A DISTANCE OF 243.87 FEET TO A POINT; THENCE RUN S 75°00'00"E ALONG THE CENTERLINE OF SAID BOULEVARD, A DISTANCE OF 243.87 FEET TO A POINT; THENCE RUN N 28°24'28"E, (SHOWING ON SECTION H PLAT AS N 28°24'28"E) A DISTANCE OF 328 FEET TO A POINT; THENCE RUN N 28°24'28"E, (SHOWING ON SECTION H PLAT AS N 28°24'28"E) A DISTANCE OF 328 FEET, PASSING THROUGH PLAT OF "SECTION H" INTO RECORDED PLAT OF "SECTION J," AND TO THE POINT OF BEGINNING.

THE STREETS, AVENUES, BOULEVARD AND DRIVE, AS SHOWN ON THE ATTACHED PLAT, TOGETHER WITH ALL EXISTING AND FUTURE PLANNING, TREES AND SHRUBBERY, ARE HEREBY DEDICATED TO THE PERPETUAL USE OF THE PUBLIC FOR PROPER PURPOSES, RESERVING TO THEMSELVES, THEIR ASSIGNS AND SUCCESSORS, THE REVERSION THEREOF WHENEVER DISCONTINUED BY LAW.

DRAWING NUMBER

PLAN HOLD CORPORATION - PALM BEACH, CALIFORNIA
REGISTERED SURVEYORS

DRAWING NUMBER

PLAN HOLD CORPORATION - PALM BEACH, CALIFORNIA
REGISTERED SURVEYORS

DRAWING NUMBER

PLAN HOLD CORPORATION - PALM BEACH, CALIFORNIA
REGISTERED SURVEYORS

DRAWING NUMBER

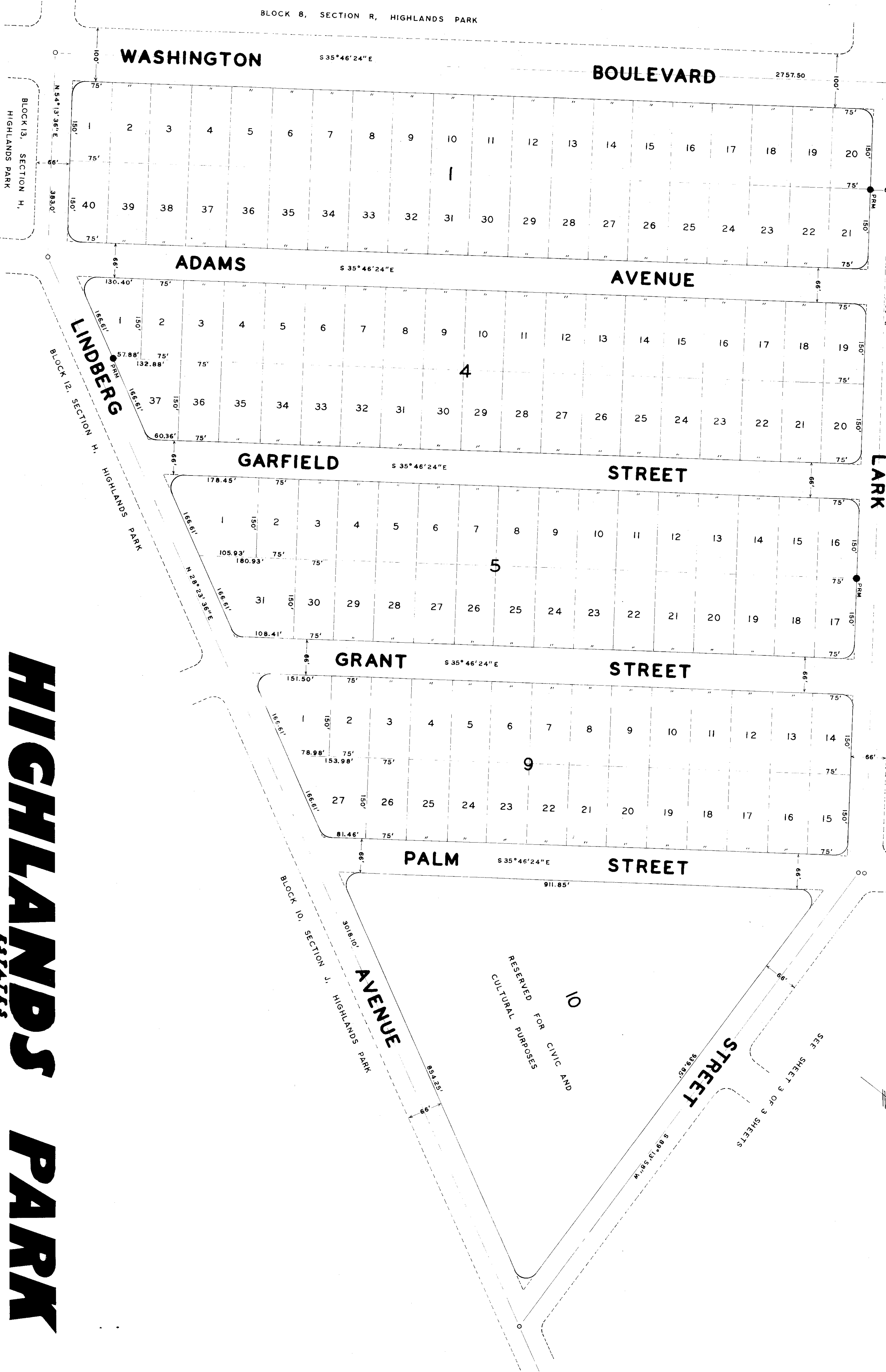
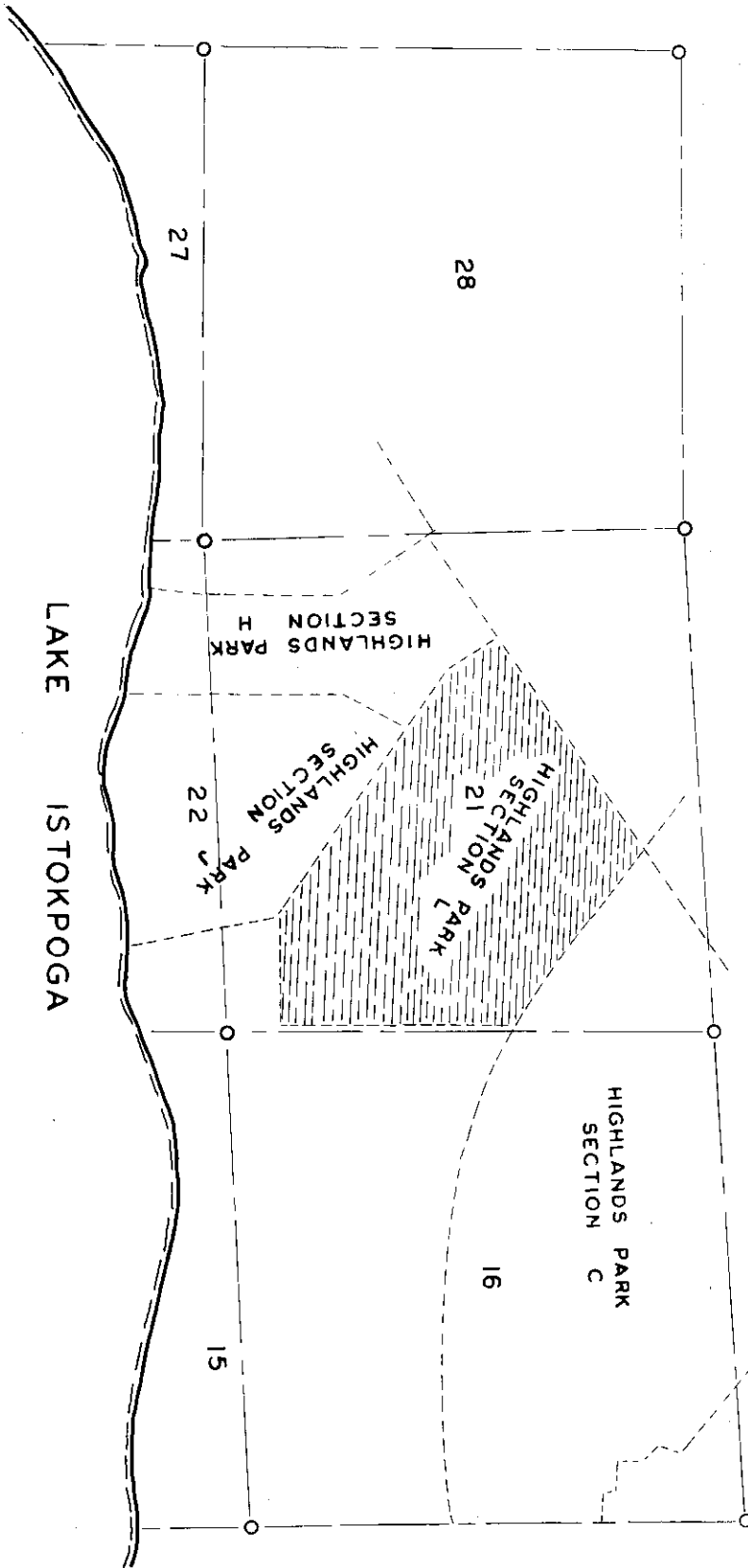
Plat Bl. 5 P. 72

Sheet 2 of 3 sheets

PLAN HOLD CORPORATION - PALM BEACH, CALIFORNIA
REGISTERED SURVEYORS

* Vacating certain easements per
O.R. Book 1027, pg. 764.

LOCATION MAP
TWP. 36S., RANGE 30E.
SCALE 1" = 2000'



SEE SHEET 1 OF 3 SHEETS

SEE SHEET 3 OF 3 SHEETS

HIGHLANDS PARK SECTION 1

A SUBDIVISION OF A PORTION OF
SECTION 21, TWP. 36S., RANGE 30 E.,
HIGHLANDS COUNTY, FLORIDA

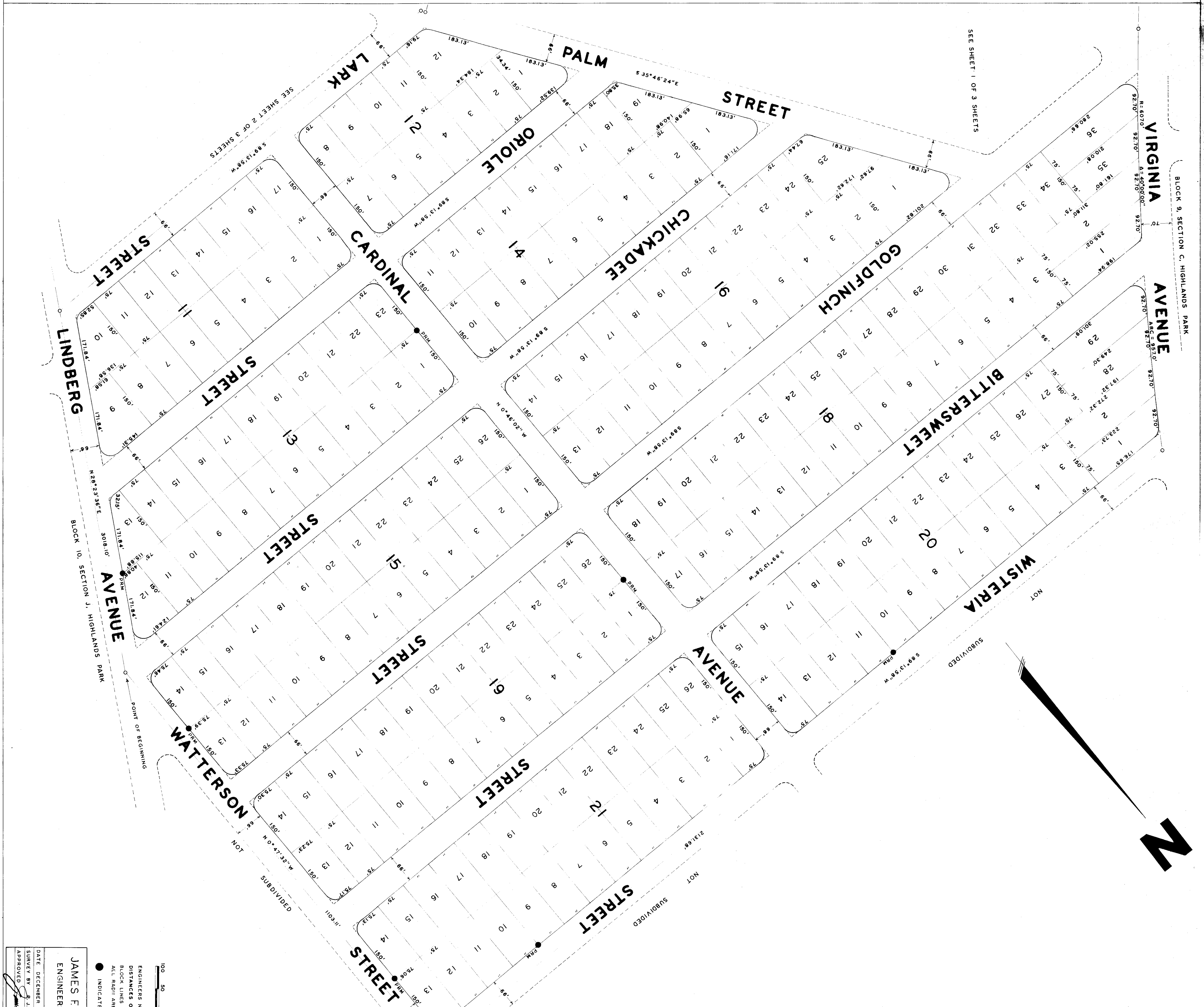
SHEET 2 OF 3 SHEETS

SCALE IN FEET
0 50 100 200 300

ENGINEERS NOTE
DISTANCES ON CORNER LOTS ARE TO INTERSECTION OF
BLOCK LINES EXTENDED UNLESS OTHERWISE INDICATED.
ALL RADII ARE 25 FEET UNLESS OTHERWISE INDICATED.
● INDICATES PERMANENT REFERENCE MONUMENT.

JAMES F. MCLURE, JR. & ASSOCIATES
ENGINEERS
LAKE PLACID, FLORIDA
SURVEYORS
DATE: DECEMBER 31, 1957
SCALE: 1" = 100'
SURVEY BY: P. J. H. [Signature]
APPROVED: [Signature]
JAMES F. MCLURE, JR., REG. NO. 760

②



HIGHLANDS PARK ESTATES SECTION L

A SUBDIVISION OF A PORTION OF SECTION 21, TWP. 36 S., RANGE 30 E., HIGHLANDS COUNTY, FLORIDA

JAMES F. MCLURE & ASSOCIATES
 ENGINEERS
 LAKE PLACID, FLORIDA
 SURVEYORS

DATE: DECEMBER 31, 1957
 SURVEY BY: J. F. M. DRAWN BY: G. F. CHECKED BY: R. G.
 APPROVED: *[Signature]* JAMES F. MCLURE, REG. NO. 780

ENGINEERS NOTE:
 DISTANCES ON CORNER LOTS ARE TO INTERSECTION OF ROCK LINES EXTENDED UNLESS OTHERWISE INDICATED.
 ALL RADII ARE 25 FEET UNLESS OTHERWISE INDICATED.
 ● INDICATES PERMANENT REFERENCE MONUMENT

