

LEGEND:
 I.P.F. = IRON PIPE FOUND
 C.P. = CONCRETE PIPER FOUND
 R.F. = REFLECTING BAR SET

REFERENCES:
 S.C.D.O.T. HIGHWAY PLANS PROJECT NO. C-386
 FILE NO. 25-386, SHEET 15 OF 57.

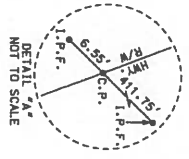
S.C.P.S.A. PLAT REVISION DATE APRIL 3, 1981
 ENTITLED YEMASSEE 230 KV SWITCHING
 STATION CONVERTED TO STATE PLANE COORDINATE
 SYSTEM - DRAWING 89191-001-0002.
 HAZARD COUNTY PLATS: WARDHOUGH, (V)
 PLAT BK. 10, PG. 61 (SALKHATCHIE WOODS, LLC)

NOTE:
 ALL BEARINGS & DISTANCES ARE BASED ON THE
 SOUTH CAROLINA STATE PLANE COORDINATE
 SYSTEM (NAD 27 - SOUTH ZONE). DISTANCES
 SURVEYED ON GROUND DISTANCES IN U.S.

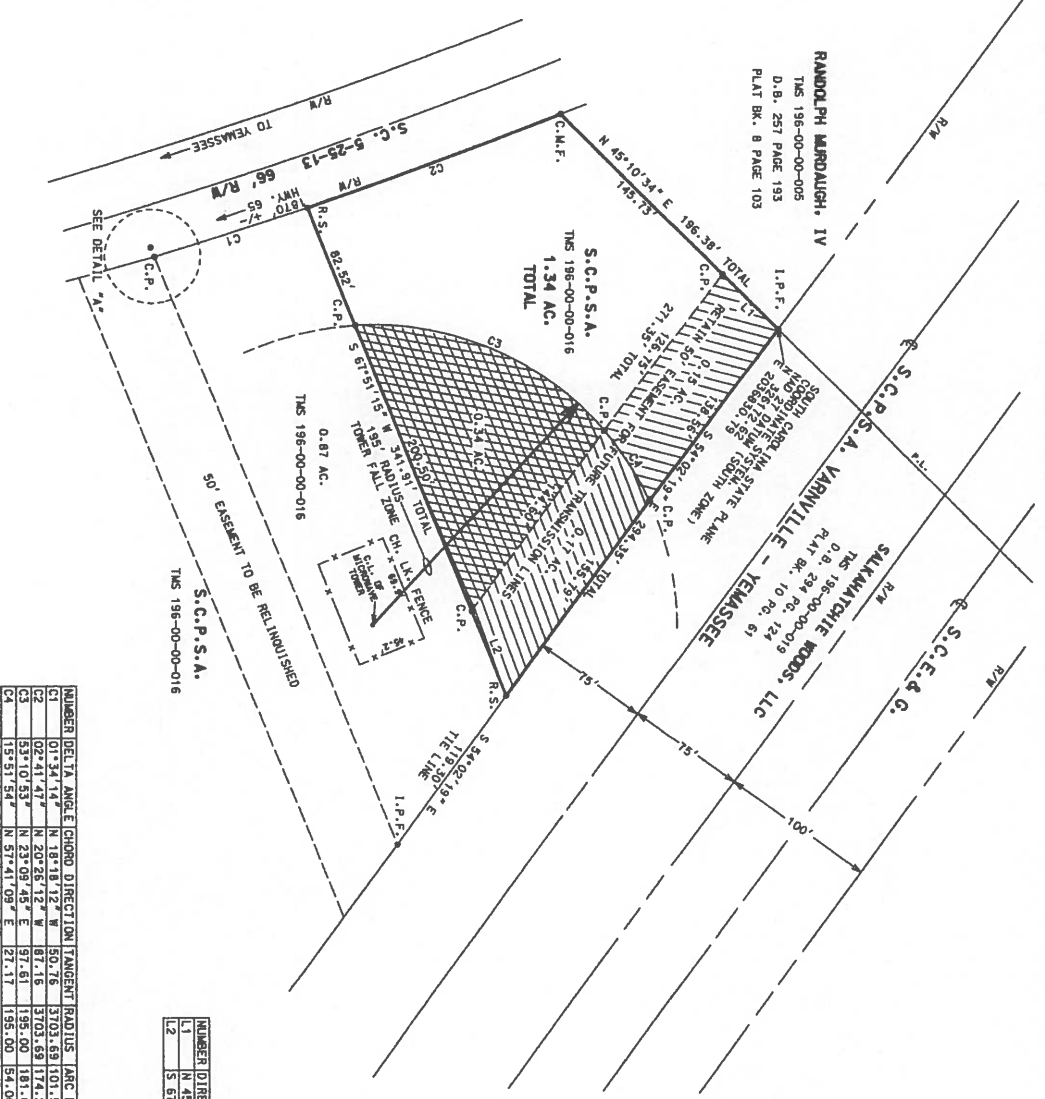
FLOOD NOTE:
 THIS TRACT APPARENTLY LIES IN FLOOD ZONE
 O.2X CHANGE FLOODPLAIN AS PER F.E.M.A.
 FLOOD MAP NUMBER 480025 0150 B
 REVISION DATE: JANUARY 15, 1988.

"HEREBY STATE TO THE BEST OF MY KNOWLEDGE, INFORMATION AND
 BELIEF THE SURVEY SHOWN HEREON WAS MADE IN ACCORDANCE WITH
 THE REQUIREMENTS OF THE MANUAL STANDARDS MANDED FOR THE
 PROTECT OF LAND SURVEYING IN SOUTH CAROLINA AND MEETS OR
 EXCEEDS THE REQUIREMENTS FOR A CLASS 'B' SURVEY AS SPECIFIED
 THEREIN."

THOMAS L. EVANS
 SURVEYOR
 ONE RIVERWOOD DRIVE
 MONROCK CORNER, S.C. 29461



283
 519
 342



NUMBER	DELTA ANGLE	CHORD DIRECTION	TANGENT RADIUS	ARC LENGTH	CHORD LENGTH
C1	01°34'14"	N 18°18'12" W	50.76	3703.68	101.52
C2	02°41'47"	N 20°26'12" W	87.16	3703.68	174.28
C3	53°10'53"	N 23°09'45" E	97.61	195.00	174.57
C4	15°51'54"	N 57°41'09" E	27.17	195.00	53.82

NUMBER	DIRECTION	DISTANCE
L1	N 45°10'34" E	50.65
L2	S 67°51'15" W	58.99



REV.	DATE	DESCRIPTION	DRAWN	CHECKED

DATE OF SURVEY: JAN. 30, 2007
 HAZARD COUNTY, S.C.

A PLAT OF 1.34 ACRES
 A PORTION OF S.C.P.S.A.'s
 YEMASSEE 230KV SWITCHING STATION
 ABOUT TO BE CONVEYED TO
 SALKHATCHIE WOODS, LLC

APPROVED
 Thomas L. Evans
 2-22-07

CHECKED
 VAUGHAN

DRAWN
 VAUGHAN

SCALE 1" = 60'

SHEET 1 OF 1

DRAWING NO. 5157-C01-5024