

THIS MAP WAS PREPARED FOR ASSESSMENT PURPOSE ONLY

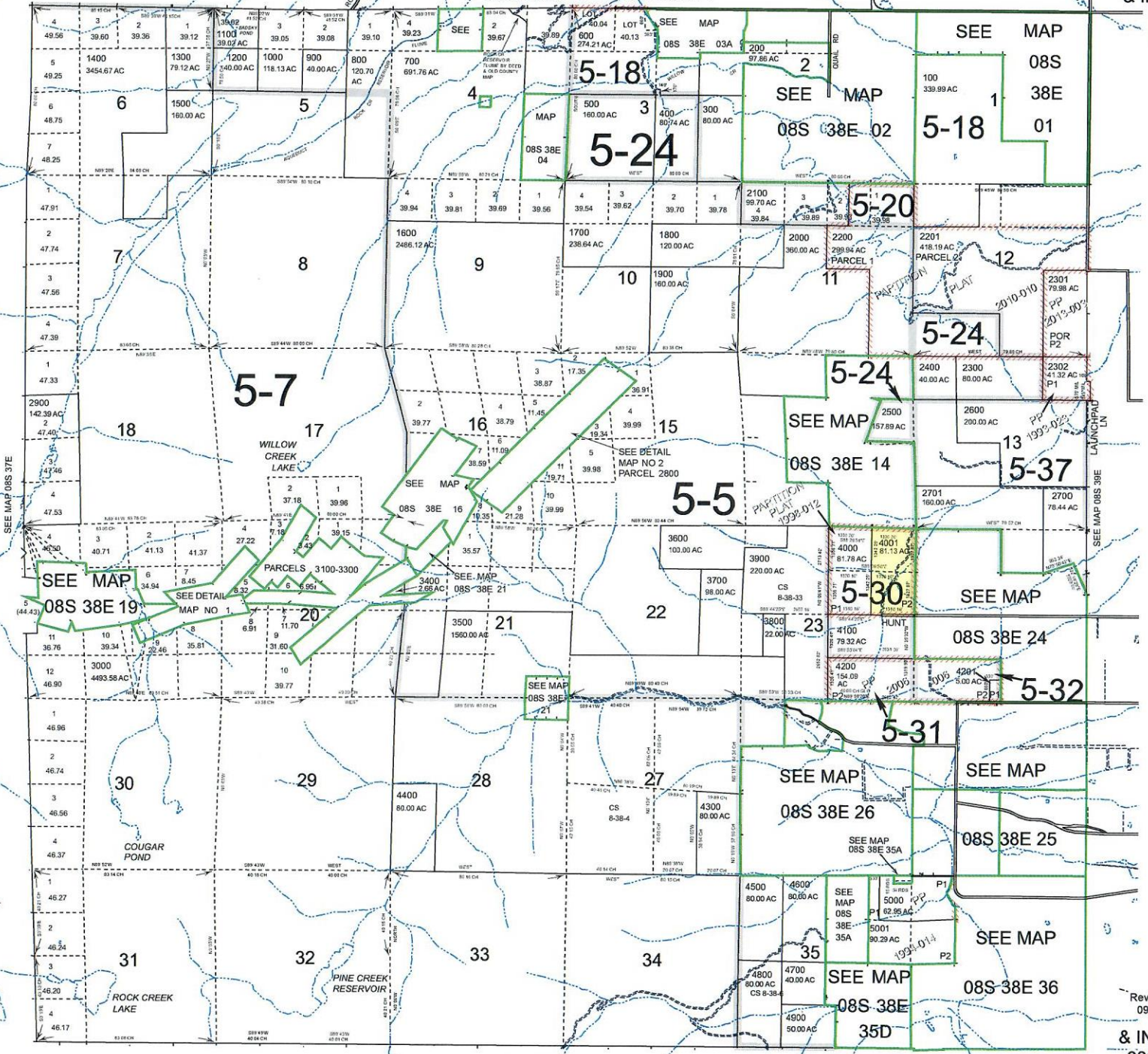
0 1,000 2,000 3,000 4,000 Feet

T.8S. R.38E. W.M. BAKER COUNTY

1" = 2000'

08S38E & INDEX

Cancelled 2303 3500M1 7000M1



SEE MAP 09S 38E

Revised: MA 09/17/2018

& INDEX 08S38E