

POR. T. 26 N., R. 10 E., M.D.B.&M.

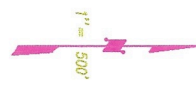
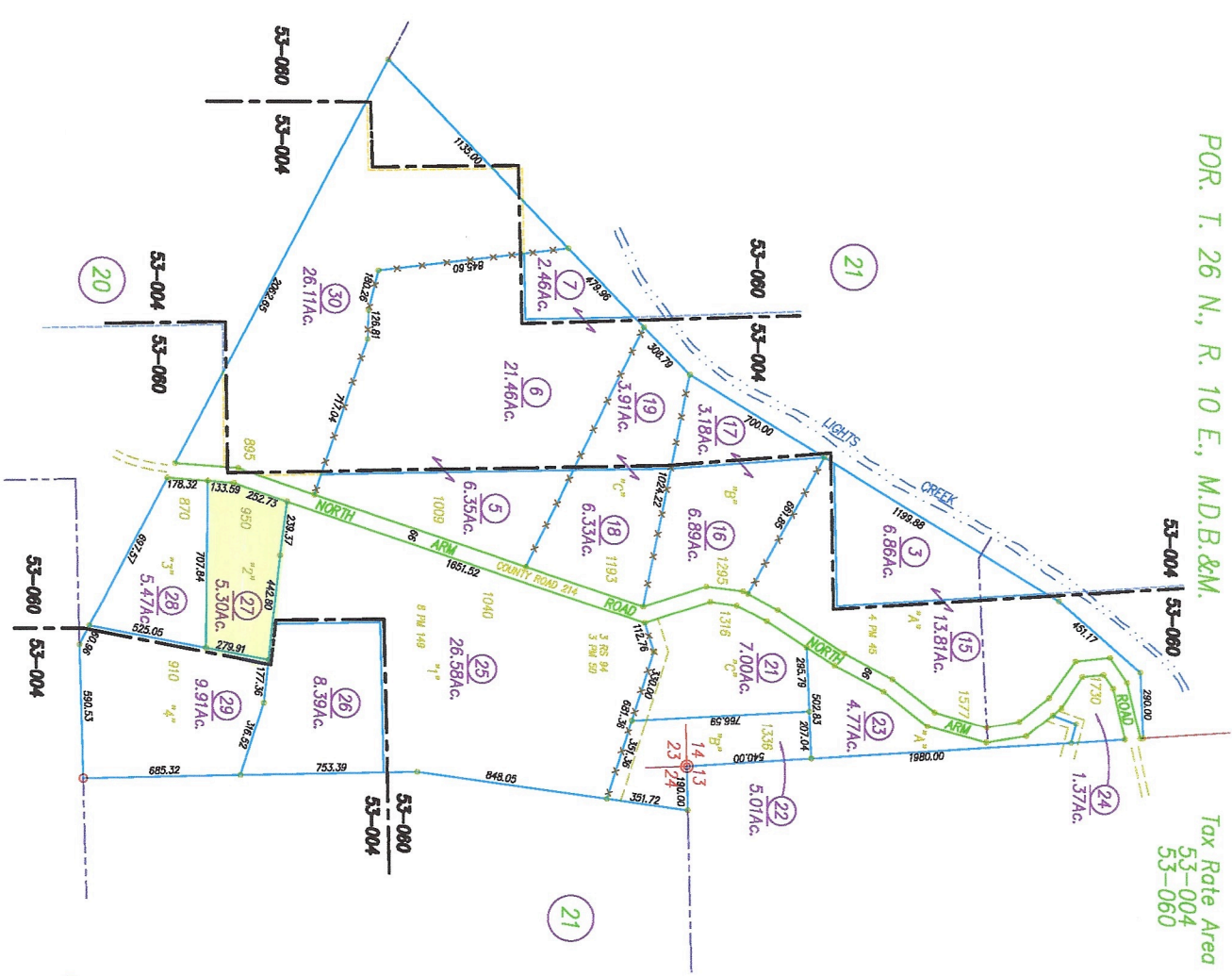
Tax Rate Area
53-004
53-060

4-29

ASSESSOR MAP LEGEND

| COLOR | LAYER |
|---------------|---|
| Red | OWNER AND ADDRESS |
| Blue | APPROX. |
| Green | UNINCORPORATED "WATER" |
| Yellow | PUBLICLY OWNED CANALS AND RIVERS |
| Purple | ASSASSOR'S PARCEL NUMBER, PROPERTY CITY/LAND COUNTY TAXES |
| Light Blue | ASSASSOR'S PARCEL NUMBER, PROPERTY CITY/LAND COUNTY TAXES |
| Dark Blue | ASSASSOR'S PARCEL NUMBER, PROPERTY CITY/LAND COUNTY TAXES |
| Light Green | ASSASSOR'S PARCEL NUMBER, PROPERTY CITY/LAND COUNTY TAXES |
| Dark Green | ASSASSOR'S PARCEL NUMBER, PROPERTY CITY/LAND COUNTY TAXES |
| Light Purple | ASSASSOR'S PARCEL NUMBER, PROPERTY CITY/LAND COUNTY TAXES |
| Dark Purple | ASSASSOR'S PARCEL NUMBER, PROPERTY CITY/LAND COUNTY TAXES |
| Light Yellow | ASSASSOR'S PARCEL NUMBER, PROPERTY CITY/LAND COUNTY TAXES |
| Dark Yellow | ASSASSOR'S PARCEL NUMBER, PROPERTY CITY/LAND COUNTY TAXES |
| Light Cyan | ASSASSOR'S PARCEL NUMBER, PROPERTY CITY/LAND COUNTY TAXES |
| Dark Cyan | ASSASSOR'S PARCEL NUMBER, PROPERTY CITY/LAND COUNTY TAXES |
| Light Magenta | ASSASSOR'S PARCEL NUMBER, PROPERTY CITY/LAND COUNTY TAXES |
| Dark Magenta | ASSASSOR'S PARCEL NUMBER, PROPERTY CITY/LAND COUNTY TAXES |
| Light Grey | ASSASSOR'S PARCEL NUMBER, PROPERTY CITY/LAND COUNTY TAXES |
| Dark Grey | ASSASSOR'S PARCEL NUMBER, PROPERTY CITY/LAND COUNTY TAXES |
| Black | ASSASSOR'S PARCEL NUMBER, PROPERTY CITY/LAND COUNTY TAXES |

NOTE: ALL INFORMATION SHOWN ON ASSESSOR PARCEL MAPS ARE FOR ASSESSOR'S OFFICE USE AND DO NOT NECESSARILY CONSTITUTE LEGAL ADVICE. NO LIABILITY IS ASSUMED FOR THE ACCURACY OF THE DATA SHOWN.



Assessor's Parcel Numbers Shown in Circles.
Assessor's Block Numbers Shown in Ellipses.
Book 4, Page 29
Plumas County Assessor's Map

2001

DRAWN BY GREGORY WINTROW