



(C) Copyright 2016 Mapbox, Inc. All rights reserved. Imagery © Mapbox, Inc. OpenStreetMap



APPROXIMATE

UNPLATTED

ged
ty.

NOTE COUNTY ROAD 480 IS OWNED BY THE COUNTY.
THE DEED IS RECORDED IN LIBER 117 OF
DEEDS, PAGES 51 AND 52.

ACKNOWLEDGMENT
State of Michigan
County of Marquette
Personally came before
Trudeau and Phyllis
instrument and ackno

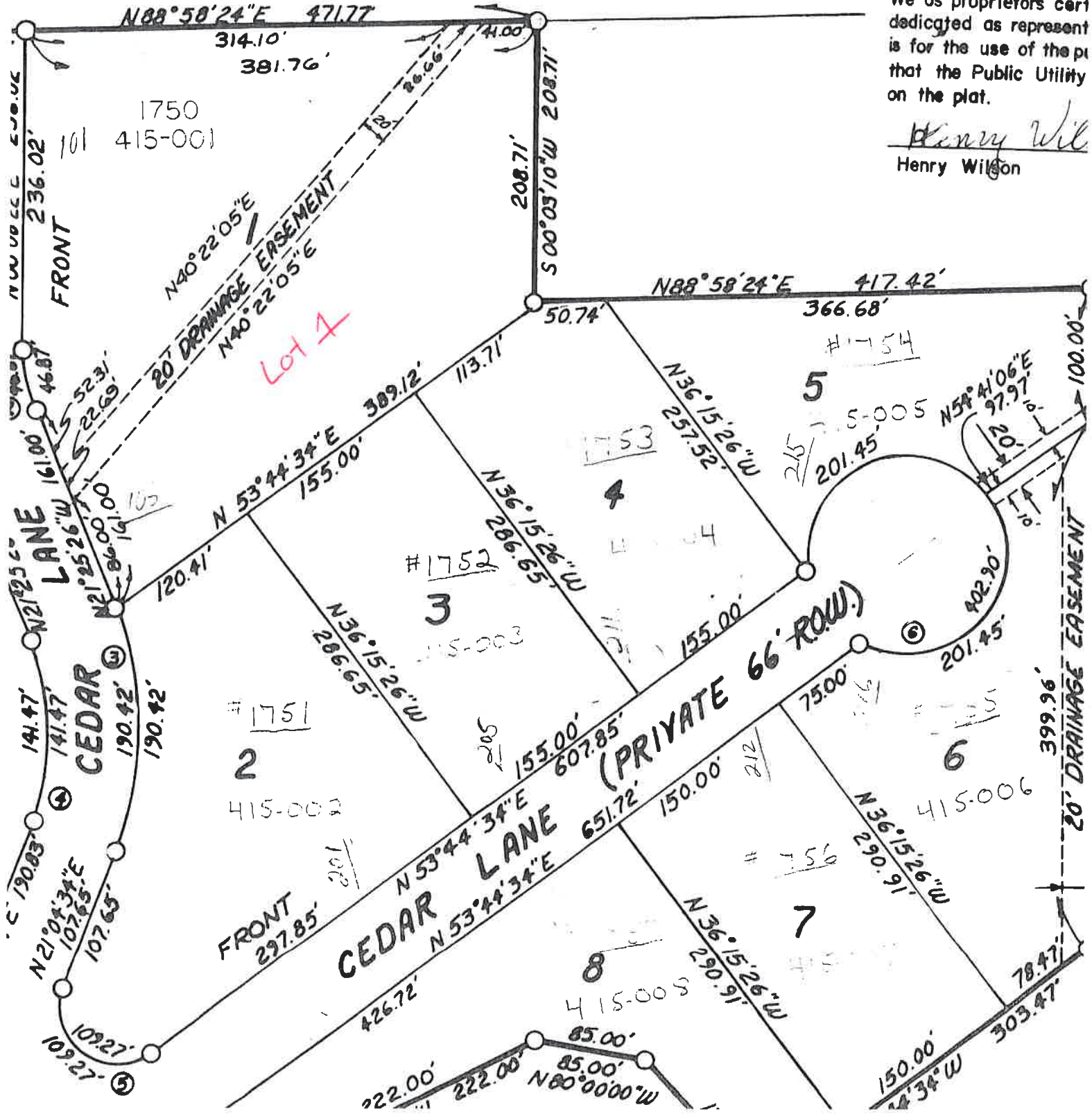
SEC. 19

COUNTY ROAD 480 (100' ROW.)

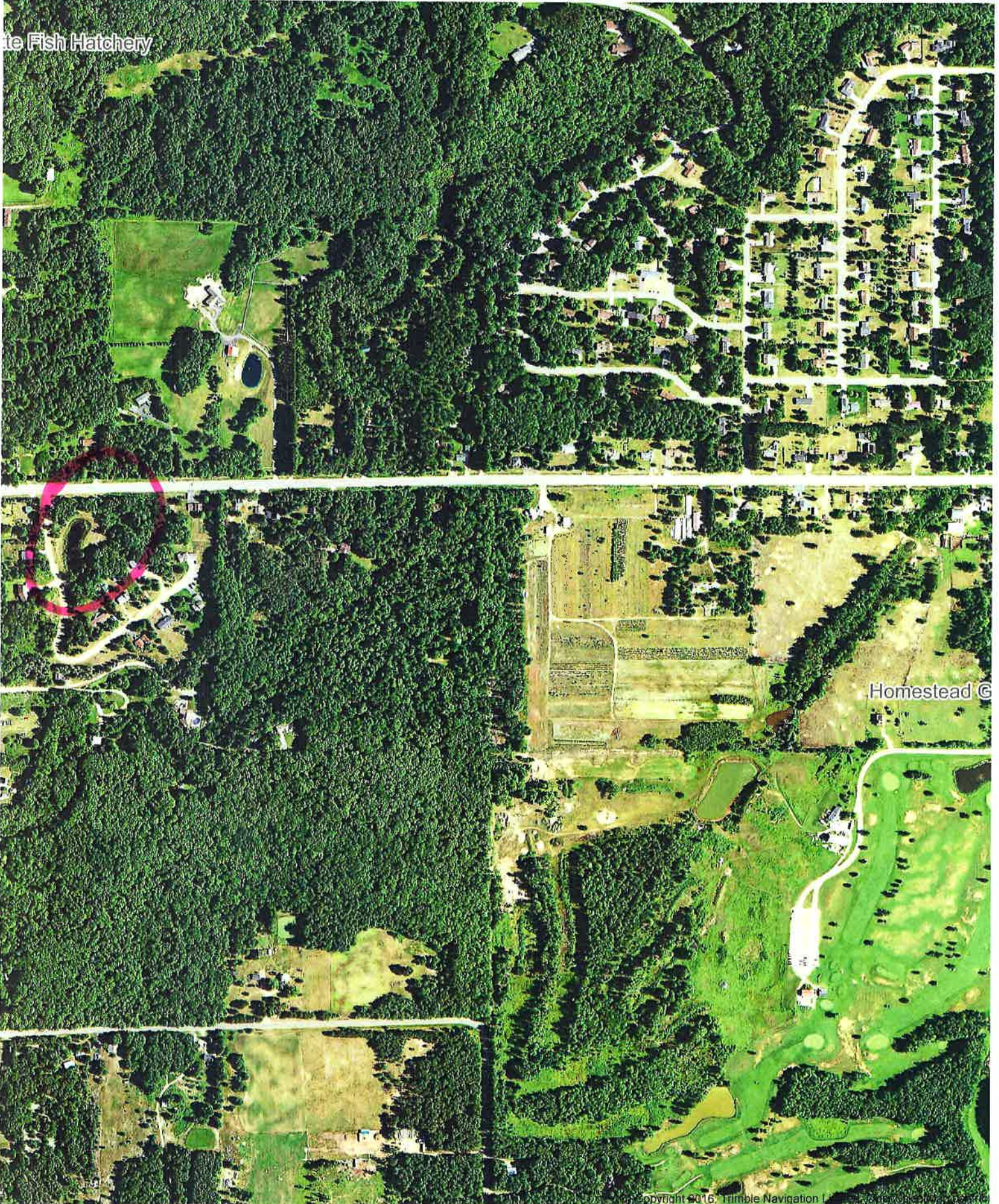
My Commission expires

PROPRIETOR'S CERTIFICATE
We as proprietors certify
dedicated as represent
is for the use of the plat
that the Public Utility
on the plat.

Henry Wilson
Henry Wilson

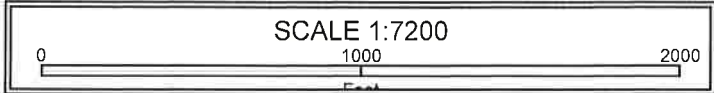


te Fish Hatchery

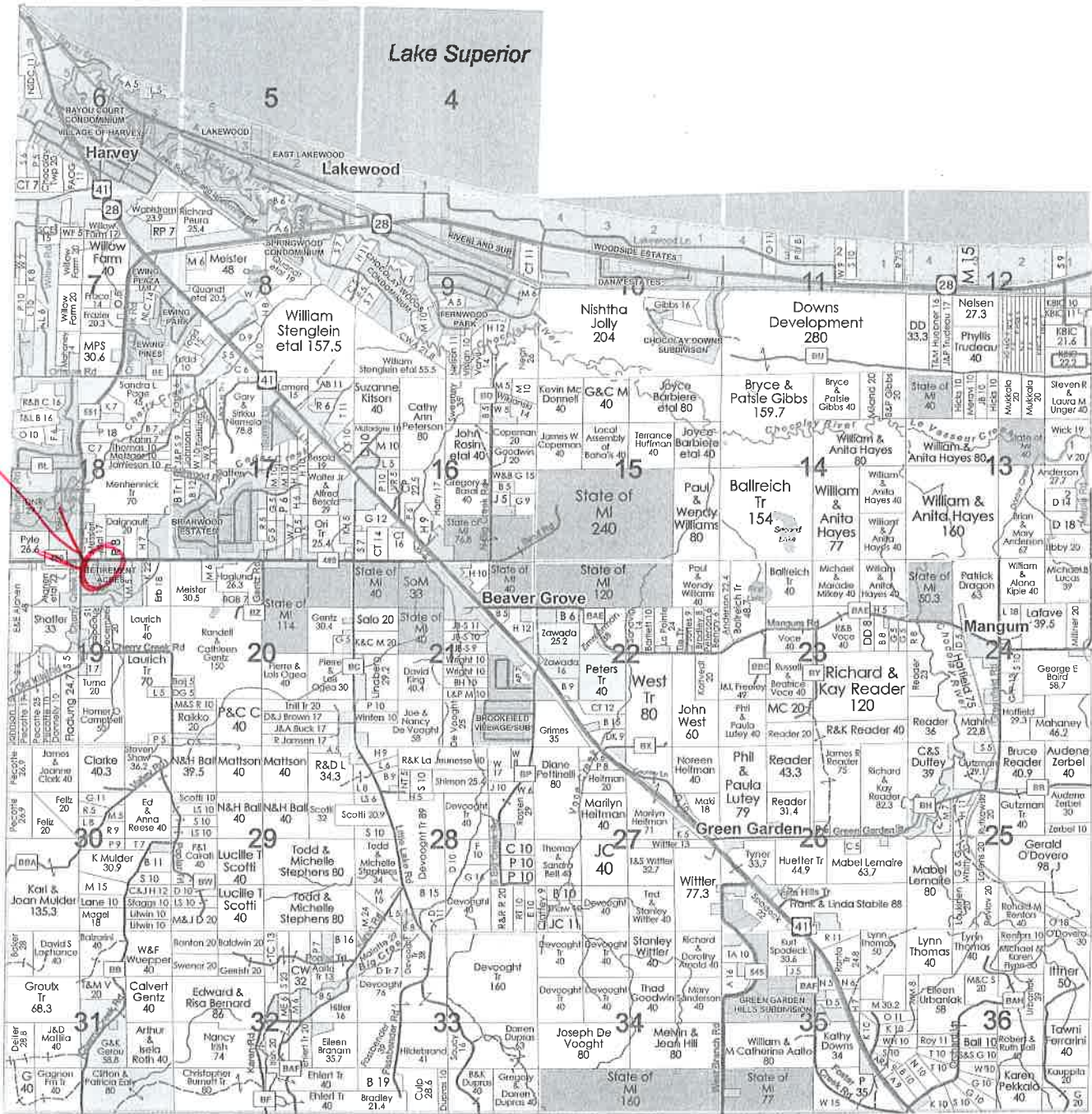
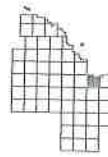


Homestead ©

Copyright © 2016, Trimble Navigation



County Line



See Sands (N) Page 35

See Chocolay (E) Page 38

© 2008 Marquette County Equalization Department

See West Branch Page 29

Menze Construction Company, Inc.
GENERAL CONTRACTORS
208 West Hampton Street
Marquette, Michigan 49855
Authorized Builder
906 226-3578
Fax 906 226-3581



THINK SNOW LOAD



Skandia Truss

9465 US 41 South Skandia, MI 49885
(906) 942-7171 Fax (906) 942-7150



(C) Copyright 2017, Mapbox, OpenStreetMap contribi

