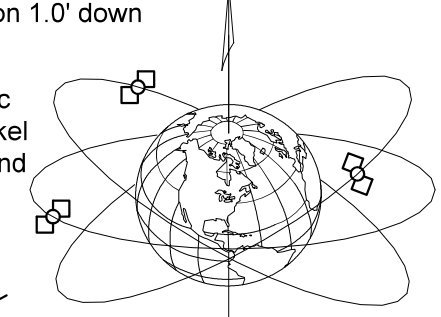


PROPERTY LINE ADJUSTMENT SURVEY FOR:

Paul Ridgway

Location: NW 1/4 Section 11 T. 4 S., R. 4 W., WM.,
 Yamhill County, OR
 Tax Lot: 4411-1000
 Date: 14 January, 2016

Newberg



Surveying

Scale: 1" = 100'

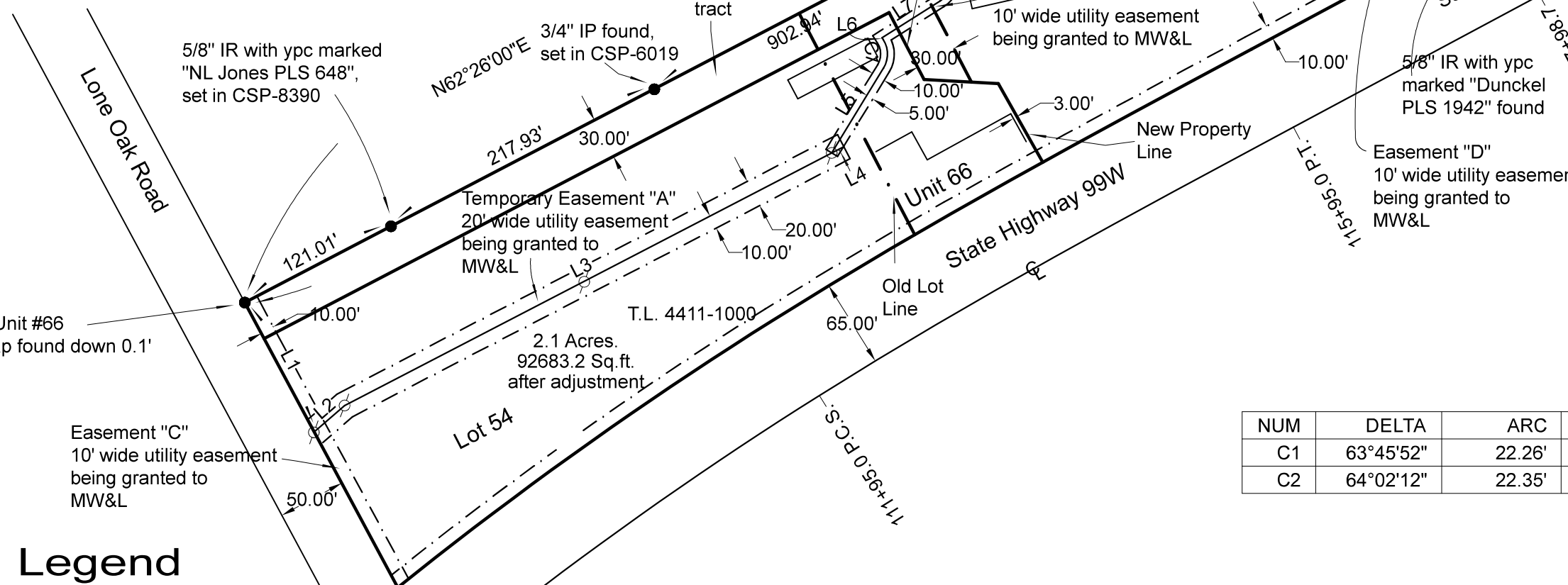
2" IP with cap found down 0.3', SE corner Unit #66

NUM	BEARING	DISTANCE
L1	S28°13'00"E	107.87'
L2	N48°49'24"E	29.56'
L3	N62°34'55"E	402.82'
L4	N62°34'55"E	10.00'
L5	N31°23'38"E	72.89'
L6	N32°22'14"W	1.54'
L7	N57°37'46"E	50.39'
L8	N6°24'26"W	5.00'

NUM	DELTA	ARC	RADIUS	CHORD	
				BEARING	DISTANCE
C1	63°45'52"	22.26'	20.00'	N0°29'18"W	21.13'
C2	64°02'12"	22.35'	20.00'	N25°36'40"E	21.21'

Legend

- = monument found, flush to 0.2' down, in good condition unless otherwise stated. Origin stated if known.
- IR = iron rod
- IP = iron pipe
- - - = utility easement
- ⊕ = existing utility pole



Newberg Surveying, Inc.

1205 NE Evans
 McMinnville, OR 97128
 (503)-474-4742 (971)-237-1956 Cell
 (503)-474-3752 Fax newberg@viclink.com