



CAPAY COUNTRY
±160 AC - FOR SALE

OFF COUNTY ROAD 23,
ESPARTO, CA 95627

PURCHASE PRICE:
\$950,000.00

TRI *Outdoor Properties*

LAND BROKERAGE | Recreational · Agricultural · Conservation
A Division of TRI Commercial Real Estate Services, Inc.

Property Info ~ Capay Country, Esparto, CA

Location: Off County Road 23 near,
Esparto, Ca 95627

Size: 160 acres

Assessor's Parcel #: 047-060-008

Zoning: Agriculture

Elevation: Approximately 400 to 600 feet.

Latitude: 38.677715

Longitude: -122.08191

MLS #: 221087407

Improvements: None

Price: \$950,000

Terms: Cash or submit.



Prop. Description: Excellent hunting property with almost all of the game animals here. Excellent views from the top of the property. Cattle currently run on property. Beautiful homes are next door. Many oak and pine trees. Close to services. Catch Creek Casino is only about 15 minutes away in the beautiful Capay Valley.

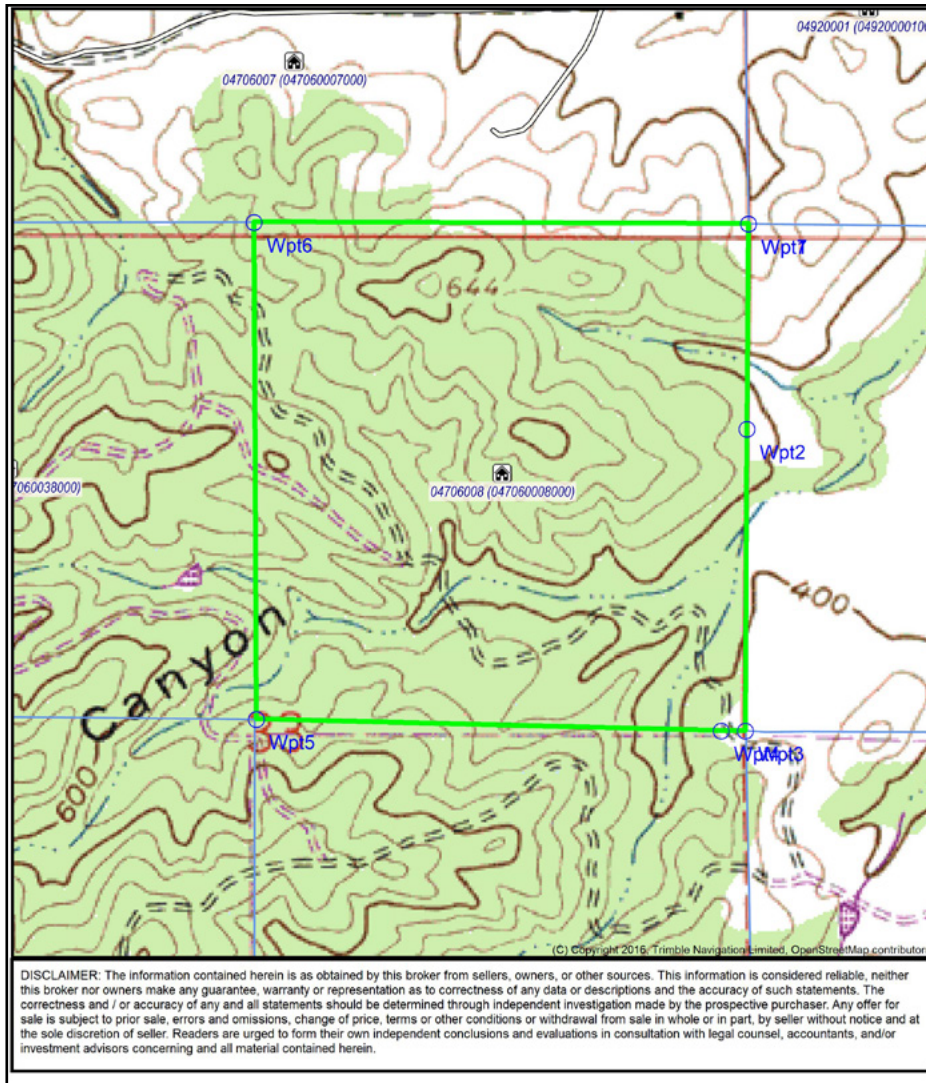
Directions: Take County Road 23 to property past County Road 83 A near Esparto.

Property Pictures ~ Capay Country, Esparto, CA

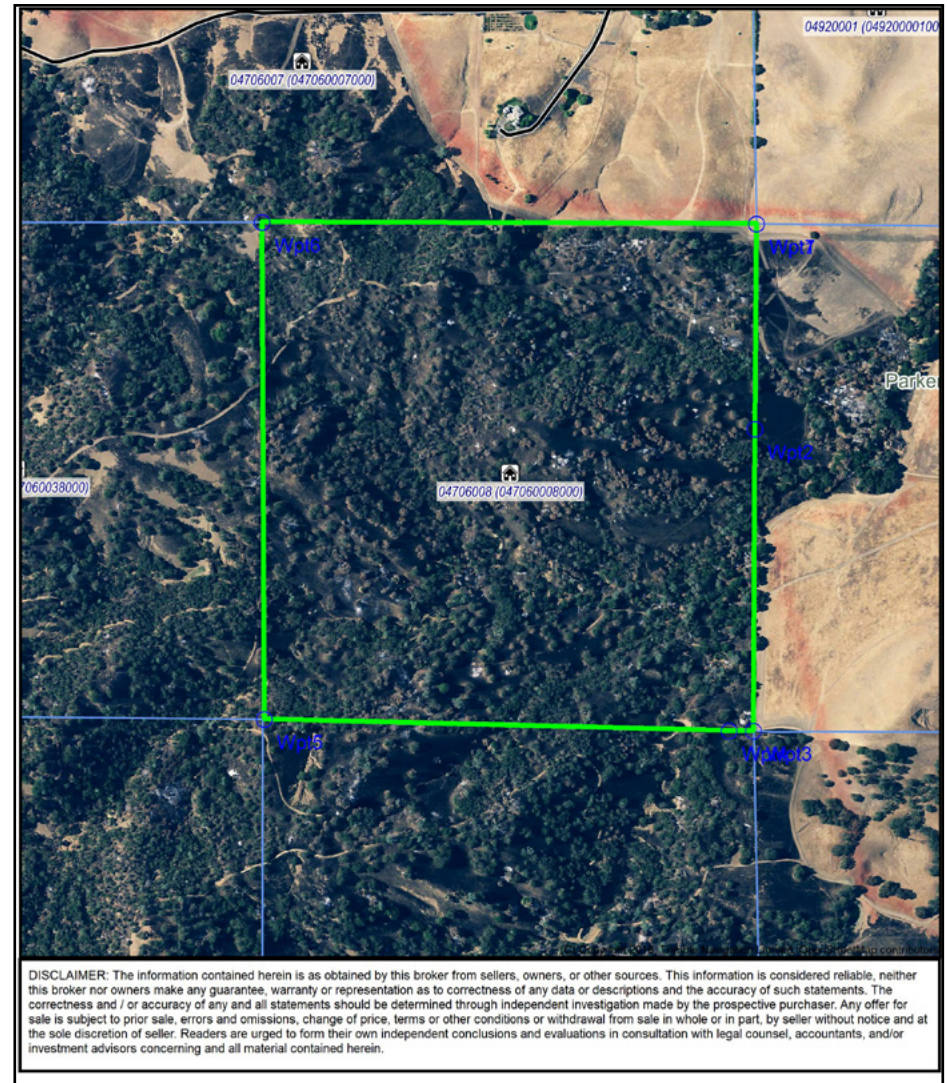


Property Maps ~ Capay Country, Esparto, CA

Topographical Map



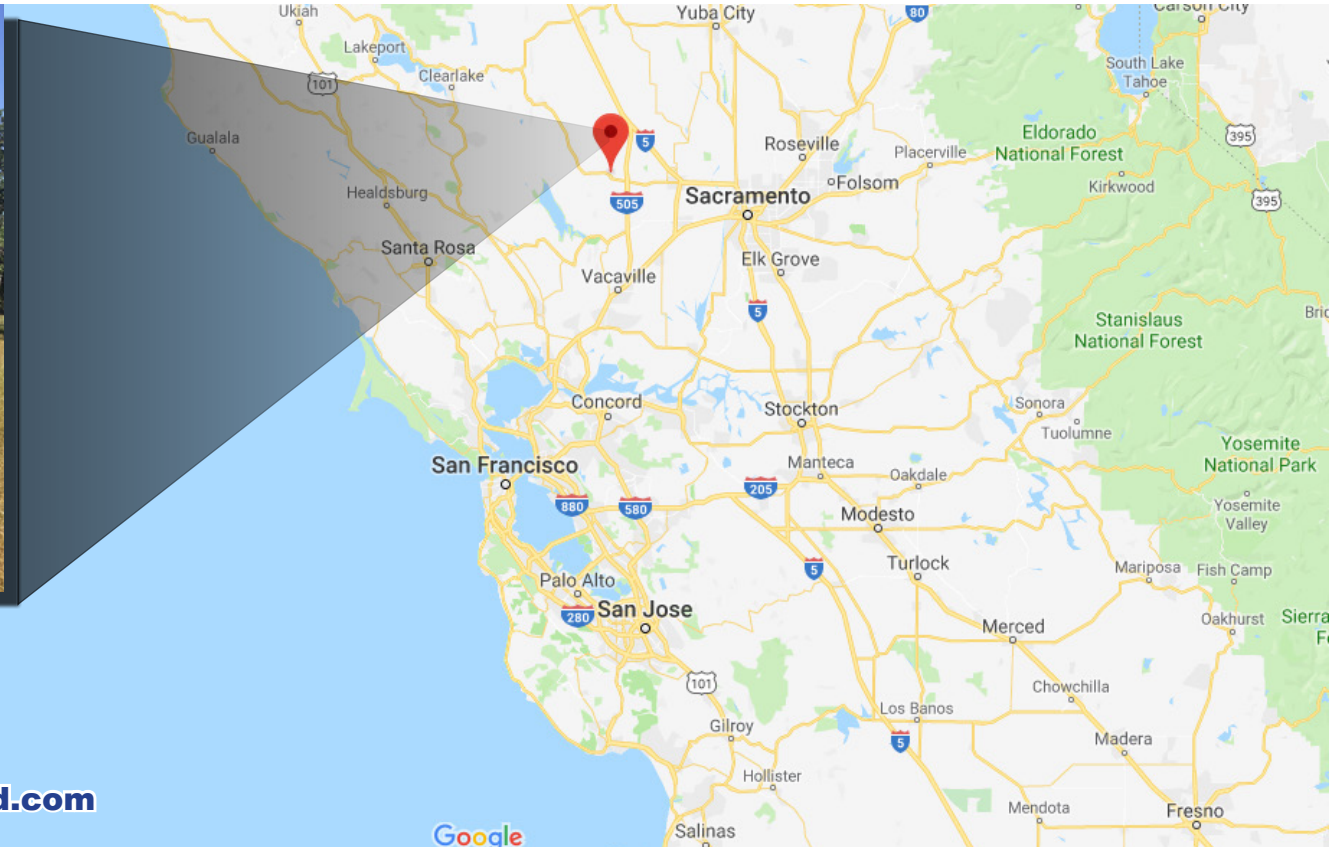
Aerial Map



Property Summary ~ Capay Country, Esparto, CA



\$950,000.00



For Additional information visit www.Land.com

For More Information Contact:



Mike Kuppenbender, ALC, CCIM, SIOR
BRE License #: 00811112
mkupp@tricommercial.com
916.960.5709

TRI Outdoor Properties

532 Gibson Drive, Suite 200, Roseville, CA 95678
LAND BROKERAGE | Recreational · Agricultural · Conservation

A Division of TRI Commercial Real Estate Services, Inc.

The information in this document was obtained from sources we deem reliable; however, no warranty or representation, expressed or implied, is made as to the accuracy of the information contained herein.