

RESIDUAL SKETCH (N.T.S.)

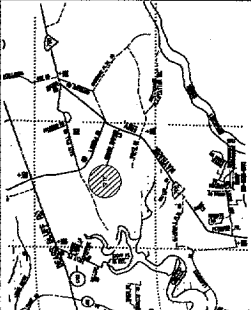
- PLAT REFERENCES**
1. BOOK 1 PAGE 716
 2. BOOK 10 PAGE 148
 3. BOOK 10 PAGE 200
 4. BOOK 10 PAGE 202
 5. BOOK 10 PAGE 204
- NOTES**
1. LOT 79, NOW BEING OFF AT ALL EDWARDS WILSON'S CONSTRUCTION, INC. (BOOK 10, PAGE 207)
 2. A. W. CONROY, JR. (BOOK 10, PAGE 207) HAS BEEN DECEASED AND HIS ESTATE HAS BEEN ADMINISTERED BY THE COURT OF CHARLESTON TO THE TRUSTEES OF THE ASSAULTS TRUST ON
 3. TOTAL AREA - 21,538 AC.
 4. LOT 79 - 15.438 AC. AND ISLAND
 5. LOT 79 - 15.438 AC. AND ISLAND

SH 32498864

NUMBER	AREA	LENGTH	WIDTH	PERIMETER	AREA
1	17,972.50	1,412.50	1,412.50	5,650.00	17,972.50
2	17,972.50	1,412.50	1,412.50	5,650.00	17,972.50
3	17,972.50	1,412.50	1,412.50	5,650.00	17,972.50
4	17,972.50	1,412.50	1,412.50	5,650.00	17,972.50
5	17,972.50	1,412.50	1,412.50	5,650.00	17,972.50

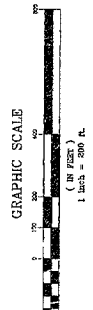
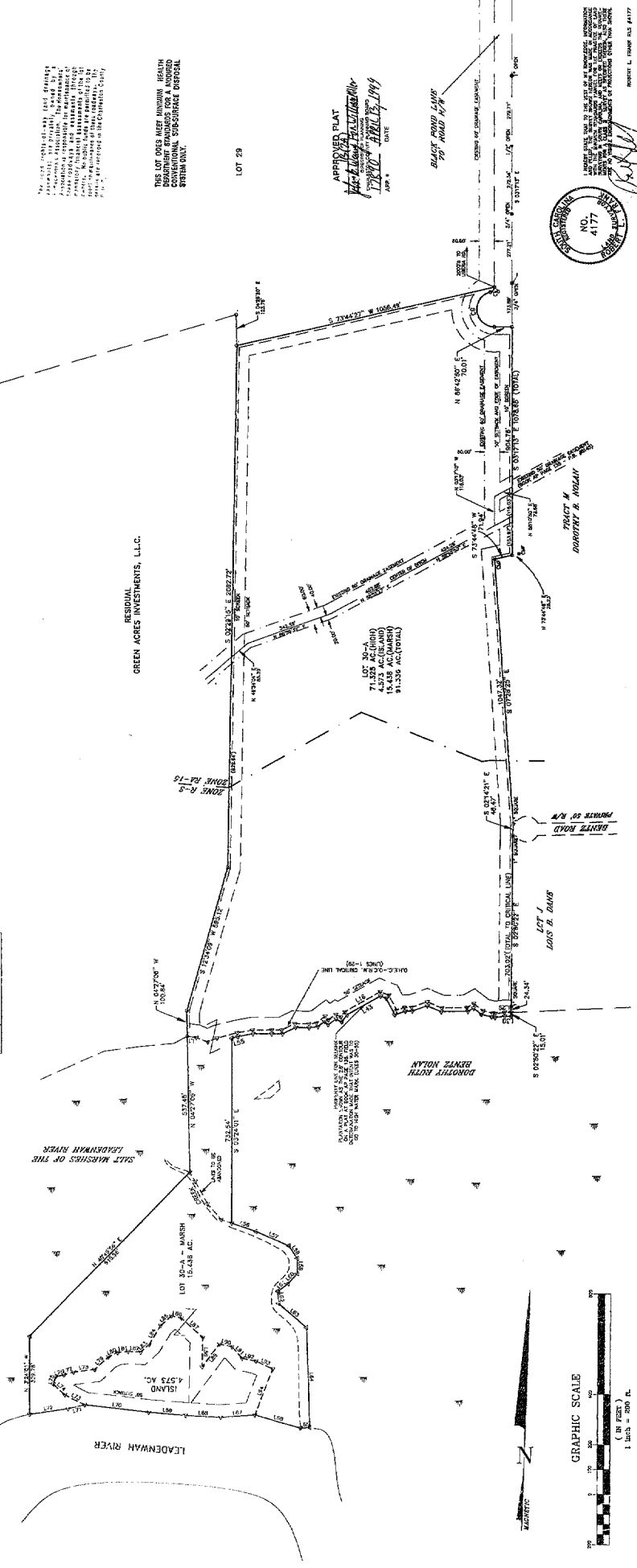
Charles South Carolina
 Office of Register Mease Conveyance
 1000 North Main Street, Room 1000
 Charleston, South Carolina 29401
 Registered Professional Surveyor
 State No. 1111
 Date: 03/05/2019

NUMBER	SECTION	DISTANCE	NUMBER	DIRECTION	DISTANCE	NUMBER	DIRECTION	DISTANCE
1	S 89°15'00" W	10.00	1	S 89°15'00" W	10.00	1	S 89°15'00" W	10.00
2	S 89°15'00" W	10.00	2	S 89°15'00" W	10.00	2	S 89°15'00" W	10.00
3	S 89°15'00" W	10.00	3	S 89°15'00" W	10.00	3	S 89°15'00" W	10.00
4	S 89°15'00" W	10.00	4	S 89°15'00" W	10.00	4	S 89°15'00" W	10.00
5	S 89°15'00" W	10.00	5	S 89°15'00" W	10.00	5	S 89°15'00" W	10.00
6	S 89°15'00" W	10.00	6	S 89°15'00" W	10.00	6	S 89°15'00" W	10.00
7	S 89°15'00" W	10.00	7	S 89°15'00" W	10.00	7	S 89°15'00" W	10.00
8	S 89°15'00" W	10.00	8	S 89°15'00" W	10.00	8	S 89°15'00" W	10.00
9	S 89°15'00" W	10.00	9	S 89°15'00" W	10.00	9	S 89°15'00" W	10.00
10	S 89°15'00" W	10.00	10	S 89°15'00" W	10.00	10	S 89°15'00" W	10.00
11	S 89°15'00" W	10.00	11	S 89°15'00" W	10.00	11	S 89°15'00" W	10.00
12	S 89°15'00" W	10.00	12	S 89°15'00" W	10.00	12	S 89°15'00" W	10.00
13	S 89°15'00" W	10.00	13	S 89°15'00" W	10.00	13	S 89°15'00" W	10.00
14	S 89°15'00" W	10.00	14	S 89°15'00" W	10.00	14	S 89°15'00" W	10.00
15	S 89°15'00" W	10.00	15	S 89°15'00" W	10.00	15	S 89°15'00" W	10.00
16	S 89°15'00" W	10.00	16	S 89°15'00" W	10.00	16	S 89°15'00" W	10.00
17	S 89°15'00" W	10.00	17	S 89°15'00" W	10.00	17	S 89°15'00" W	10.00
18	S 89°15'00" W	10.00	18	S 89°15'00" W	10.00	18	S 89°15'00" W	10.00
19	S 89°15'00" W	10.00	19	S 89°15'00" W	10.00	19	S 89°15'00" W	10.00
20	S 89°15'00" W	10.00	20	S 89°15'00" W	10.00	20	S 89°15'00" W	10.00
21	S 89°15'00" W	10.00	21	S 89°15'00" W	10.00	21	S 89°15'00" W	10.00
22	S 89°15'00" W	10.00	22	S 89°15'00" W	10.00	22	S 89°15'00" W	10.00
23	S 89°15'00" W	10.00	23	S 89°15'00" W	10.00	23	S 89°15'00" W	10.00
24	S 89°15'00" W	10.00	24	S 89°15'00" W	10.00	24	S 89°15'00" W	10.00
25	S 89°15'00" W	10.00	25	S 89°15'00" W	10.00	25	S 89°15'00" W	10.00
26	S 89°15'00" W	10.00	26	S 89°15'00" W	10.00	26	S 89°15'00" W	10.00
27	S 89°15'00" W	10.00	27	S 89°15'00" W	10.00	27	S 89°15'00" W	10.00
28	S 89°15'00" W	10.00	28	S 89°15'00" W	10.00	28	S 89°15'00" W	10.00
29	S 89°15'00" W	10.00	29	S 89°15'00" W	10.00	29	S 89°15'00" W	10.00
30	S 89°15'00" W	10.00	30	S 89°15'00" W	10.00	30	S 89°15'00" W	10.00
31	S 89°15'00" W	10.00	31	S 89°15'00" W	10.00	31	S 89°15'00" W	10.00
32	S 89°15'00" W	10.00	32	S 89°15'00" W	10.00	32	S 89°15'00" W	10.00
33	S 89°15'00" W	10.00	33	S 89°15'00" W	10.00	33	S 89°15'00" W	10.00
34	S 89°15'00" W	10.00	34	S 89°15'00" W	10.00	34	S 89°15'00" W	10.00
35	S 89°15'00" W	10.00	35	S 89°15'00" W	10.00	35	S 89°15'00" W	10.00
36	S 89°15'00" W	10.00	36	S 89°15'00" W	10.00	36	S 89°15'00" W	10.00
37	S 89°15'00" W	10.00	37	S 89°15'00" W	10.00	37	S 89°15'00" W	10.00
38	S 89°15'00" W	10.00	38	S 89°15'00" W	10.00	38	S 89°15'00" W	10.00
39	S 89°15'00" W	10.00	39	S 89°15'00" W	10.00	39	S 89°15'00" W	10.00
40	S 89°15'00" W	10.00	40	S 89°15'00" W	10.00	40	S 89°15'00" W	10.00
41	S 89°15'00" W	10.00	41	S 89°15'00" W	10.00	41	S 89°15'00" W	10.00
42	S 89°15'00" W	10.00	42	S 89°15'00" W	10.00	42	S 89°15'00" W	10.00
43	S 89°15'00" W	10.00	43	S 89°15'00" W	10.00	43	S 89°15'00" W	10.00
44	S 89°15'00" W	10.00	44	S 89°15'00" W	10.00	44	S 89°15'00" W	10.00
45	S 89°15'00" W	10.00	45	S 89°15'00" W	10.00	45	S 89°15'00" W	10.00
46	S 89°15'00" W	10.00	46	S 89°15'00" W	10.00	46	S 89°15'00" W	10.00
47	S 89°15'00" W	10.00	47	S 89°15'00" W	10.00	47	S 89°15'00" W	10.00
48	S 89°15'00" W	10.00	48	S 89°15'00" W	10.00	48	S 89°15'00" W	10.00
49	S 89°15'00" W	10.00	49	S 89°15'00" W	10.00	49	S 89°15'00" W	10.00
50	S 89°15'00" W	10.00	50	S 89°15'00" W	10.00	50	S 89°15'00" W	10.00
51	S 89°15'00" W	10.00	51	S 89°15'00" W	10.00	51	S 89°15'00" W	10.00
52	S 89°15'00" W	10.00	52	S 89°15'00" W	10.00	52	S 89°15'00" W	10.00
53	S 89°15'00" W	10.00	53	S 89°15'00" W	10.00	53	S 89°15'00" W	10.00
54	S 89°15'00" W	10.00	54	S 89°15'00" W	10.00	54	S 89°15'00" W	10.00
55	S 89°15'00" W	10.00	55	S 89°15'00" W	10.00	55	S 89°15'00" W	10.00
56	S 89°15'00" W	10.00	56	S 89°15'00" W	10.00	56	S 89°15'00" W	10.00
57	S 89°15'00" W	10.00	57	S 89°15'00" W	10.00	57	S 89°15'00" W	10.00
58	S 89°15'00" W	10.00	58	S 89°15'00" W	10.00	58	S 89°15'00" W	10.00
59	S 89°15'00" W	10.00	59	S 89°15'00" W	10.00	59	S 89°15'00" W	10.00
60	S 89°15'00" W	10.00	60	S 89°15'00" W	10.00	60	S 89°15'00" W	10.00
61	S 89°15'00" W	10.00	61	S 89°15'00" W	10.00	61	S 89°15'00" W	10.00
62	S 89°15'00" W	10.00	62	S 89°15'00" W	10.00	62	S 89°15'00" W	10.00
63	S 89°15'00" W	10.00	63	S 89°15'00" W	10.00	63	S 89°15'00" W	10.00
64	S 89°15'00" W	10.00	64	S 89°15'00" W	10.00	64	S 89°15'00" W	10.00
65	S 89°15'00" W	10.00	65	S 89°15'00" W	10.00	65	S 89°15'00" W	10.00
66	S 89°15'00" W	10.00	66	S 89°15'00" W	10.00	66	S 89°15'00" W	10.00
67	S 89°15'00" W	10.00	67	S 89°15'00" W	10.00	67	S 89°15'00" W	10.00
68	S 89°15'00" W	10.00	68	S 89°15'00" W	10.00	68	S 89°15'00" W	10.00
69	S 89°15'00" W	10.00	69	S 89°15'00" W	10.00	69	S 89°15'00" W	10.00
70	S 89°15'00" W	10.00	70	S 89°15'00" W	10.00	70	S 89°15'00" W	10.00
71	S 89°15'00" W	10.00	71	S 89°15'00" W	10.00	71	S 89°15'00" W	10.00
72	S 89°15'00" W	10.00	72	S 89°15'00" W	10.00	72	S 89°15'00" W	10.00
73	S 89°15'00" W	10.00	73	S 89°15'00" W	10.00	73	S 89°15'00" W	10.00
74	S 89°15'00" W	10.00	74	S 89°15'00" W	10.00	74	S 89°15'00" W	10.00
75	S 89°15'00" W	10.00	75	S 89°15'00" W	10.00	75	S 89°15'00" W	10.00
76	S 89°15'00" W	10.00	76	S 89°15'00" W	10.00	76	S 89°15'00" W	10.00
77	S 89°15'00" W	10.00	77	S 89°15'00" W	10.00	77	S 89°15'00" W	10.00
78	S 89°15'00" W	10.00	78	S 89°15'00" W	10.00	78	S 89°15'00" W	10.00
79	S 89°15'00" W	10.00	79	S 89°15'00" W	10.00	79	S 89°15'00" W	10.00
80	S 89°15'00" W	10.00	80	S 89°15'00" W	10.00	80	S 89°15'00" W	10.00
81	S 89°15'00" W	10.00	81	S 89°15'00" W	10.00	81	S 89°15'00" W	10.00
82	S 89°15'00" W	10.00	82	S 89°15'00" W	10.00	82	S 89°15'00" W	10.00
83	S 89°15'00" W	10.00	83	S 89°15'00" W	10.00	83	S 89°15'00" W	10.00
84	S 89°15'00" W	10.00	84	S 89°15'00" W	10.00	84	S 89°15'00" W	10.00
85	S 89°15'00" W	10.00	85	S 89°15'00" W	10.00	85	S 89°15'00" W	10.00
86	S 89°15'00" W	10.00	86	S 89°15'00" W	10.00	86	S 89°15'00" W	10.00
87	S 89°15'00" W	10.00	87	S 89°15'00" W	10.00	87	S 89°15'00" W	10.00
88	S 89°15'00" W	10.00	88	S 89°15'00" W	10.00	88	S 89°15'00" W	10.00
89	S 89°15'00" W	10.00	89	S 89°15'00" W	10.00	89	S 89°15'00" W	10.00
90	S 89°15'00" W	10.00	90	S 89°15'00" W	10.00	90	S 89°15'00" W	10.00
91	S 89°15'00" W	10.00	91	S 89°15'00" W	10.00	91	S 89°15'00" W	10.00
92	S 89°15'00" W	10.00	92	S 89°15'00" W	10.00	92	S 89°15'00" W	10.00
93	S 89°15'00" W	10.00	93	S 89°15'00" W	10.00	93	S 89°15'00" W	10.00
94	S 89°15'00" W	10.00	94	S 89°15'00" W	10.00	94	S 89°15'00" W	10.00
95	S 89°15'00" W	10.00	95	S 89°15'00" W	10.00	95	S 89°15'00" W	10.00
96	S 89°15'00" W	10.00	96	S 89°15'00" W	10.00	96	S 89°15'00" W	10.00
97	S 89°15'00" W	10.00	97	S 89°15'00" W	10.00	97	S 89°15'00" W	10.00
98	S 89°15'00" W	10.00	98	S 89°15'00" W	10.00	98	S 89°15'00" W	10.00
99	S 89°15'00" W	10.00	99	S 89°15'00" W	10.00	99	S 89°15'00" W	10.00
100	S 89°15'00" W	10.00	100	S 89°15'00" W	10.00	100	S 89°15'00" W	10.00



LOCATION SKETCH (N.T.S.)

THIS SURVEY WAS MADE IN ACCORDANCE WITH THE PROVISIONS OF THE ACTS OF THE GENERAL ASSEMBLY OF THE STATE OF SOUTH CAROLINA, AND THE SURVEYOR HAS BEEN DULY QUALIFIED BY THE COURT OF CHARLESTON TO TAKE THIS SURVEY. THE SURVEYOR HAS BEEN DULY QUALIFIED BY THE COURT OF CHARLESTON TO TAKE THIS SURVEY. THE SURVEYOR HAS BEEN DULY QUALIFIED BY THE COURT OF CHARLESTON TO TAKE THIS SURVEY.



APPROVED PLAT
 DATE: 03/05/2019

BLACK POND LAKE
 79' WOOD 1/8"

RESIDUAL GREEN ACRES INVESTMENTS, L.L.C.

LOT 79

ISLAND
 4.573 AC (TOTAL)
 4.573 AC (ISLAND)
 71.535 AC (TOTAL)

TRACT M. NODARY
 DORRITY R. NODARY

TRACT J
 LOTS B, D, H, I

BLACK POND LAKE
 79' WOOD 1/8"

RESIDUAL GREEN ACRES INVESTMENTS, L.L.C.

RESIDUAL SKETCH (N.T.S.)

RESIDUAL GREEN ACRES INVESTMENTS, L.L.C.

LOT 79

ISLAND
 4.573 AC (TOTAL)
 4.573 AC (ISLAND)
 71.535 AC (TOTAL)

TRACT M. NODARY
 DORRITY R. NODARY

TRACT J
 LOTS B,