

KURT ESBECK CONSTRUCTION

Trenching & Drainage • Terrace & Waterways
 Earth Structures • GPS Layout & Design Services
 Prinsco Tile & Culverts • Seeding & Mulching
 Waterline Installation • Freezeproof Stock Tanks

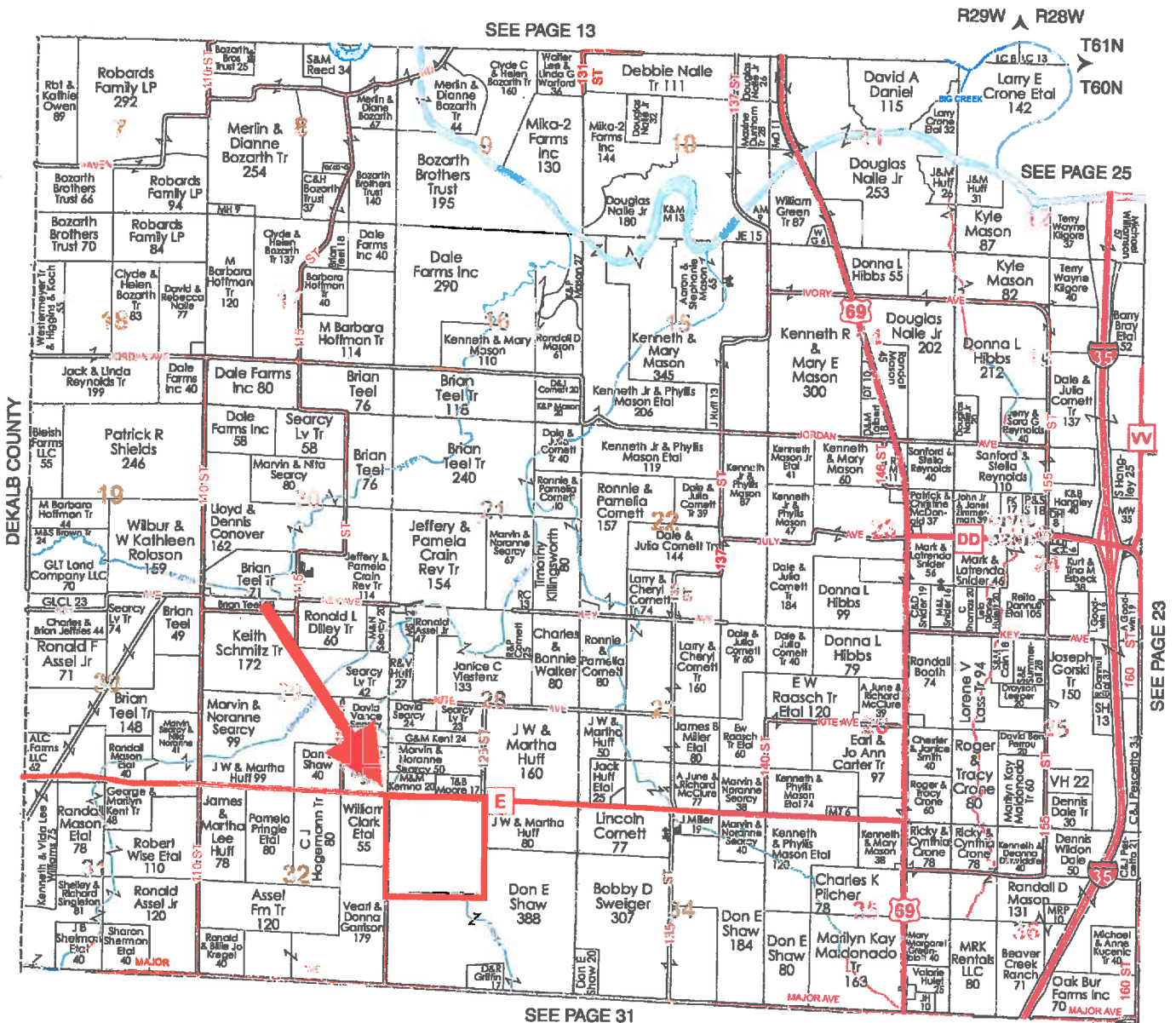
Call us for all of your erosion control needs.
 Cody Selby 660-605-1990 • Kurt Esbeck 660-663-9601



Marion (W)

Townships 60N & 61N - Ranges 28W & 29W

Copyright © 2018 Mapping Solutions



Daviness County, MO Hunting Land Missouri, AC +/-



 Boundary

Dan O'Connor
P: 816-288-1116

www.midwestrealtipro.com



The information contained herein was obtained from sources deemed to be reliable. Mapright Services makes no warranty or representation as to the completeness or accuracy thereof.

Davies County, MO Hunting Land Missouri, AC +/-



Boundary

Dan O'Connor
P: 816-288-1116

www.midwestrealtypro.com



The information contained herein was obtained from sources believed to be reliable. It does not constitute a warranty or guarantee as to the completeness or accuracy thereof.

SOIL CODE	SOIL DESCRIPTION	ACRES	%	CPI	NCCPI	CAP
13626	Nodaway silt loam, 1 to 3 percent slopes, occasionally flooded	57.66	35.67	0	86	2w
30079	Greenton silt loam, 5 to 9 percent slopes	34.63	21.42	0	58	3e
34006	Gifford silt loam, 5 to 9 percent slopes	21.36	13.21	0	76	3e
30208	Vanmeter flaggy silty clay loam, 14 to 20 percent slopes	14.63	9.05	0	33	7e
10089	Mandeville silt loam, 5 to 9 percent slopes	13.87	8.58	0	62	3e
10021	Greenton silty clay loam, 5 to 9 percent slopes, eroded	13.06	8.08	0	55	3e
10086	Mandeville silt loam, 2 to 5 percent slopes	6.21	3.84	0	61	2e
30237	Greenton silty clay loam, 2 to 5 percent slopes, eroded	0.18	0.11	0	61	3e
36117	Nodaway silt loam, heavy till, 0 to 2 percent slopes, occasionally flooded	0.03	0.02	0	89	2w

Capability Legend

Increased Limitations and Hazards

Decreased Adaptability and Freedom of Choice Users

Land, Capability



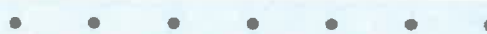
'Wild Life'



Forestry



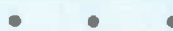
Limited



Moderate



Intense



Limited



Moderate

Intense



Very Intense



Grazing Cultivation

(c) climatic limitations (e) susceptibility to erosion

(s) soil limitations within the rooting zone (w) excess of water