



**WOODCREST
CAPITAL, LLC**

5.6 Acres College Park

South Main Street | Weatherford TX



Traffic Counts	
South Main Street	23,405 VPD
I-20	52,425 VPD
Bethel Road	9,684 VPD

Demographics	1-mile	3-mile	5-mile
Population	4,861	29,295	40,744
Households	2,153	11,409	15,596
Average HH Income	\$68,635	\$75,701	\$81,121

*Demographics provided by CoStar Group, www.costar.com, 2020 dataset

**LAND FOR
SALE**

**ACRES:
+/- 5.583**

**ZONING:
"C1" Commercial**

(817) 927-0050

WILL SUBDIVIDE

Woodcrest Capital, LLC
3113 South University Drive, Suite 600
Fort Worth, TX 76109
www.woodcrestcapital.com

The information contained herein has been given to us by the owner of the property or other sources we deem reliable. We have no reason to doubt its accuracy, but we do not guarantee it. All information should be verified prior to purchase or lease.

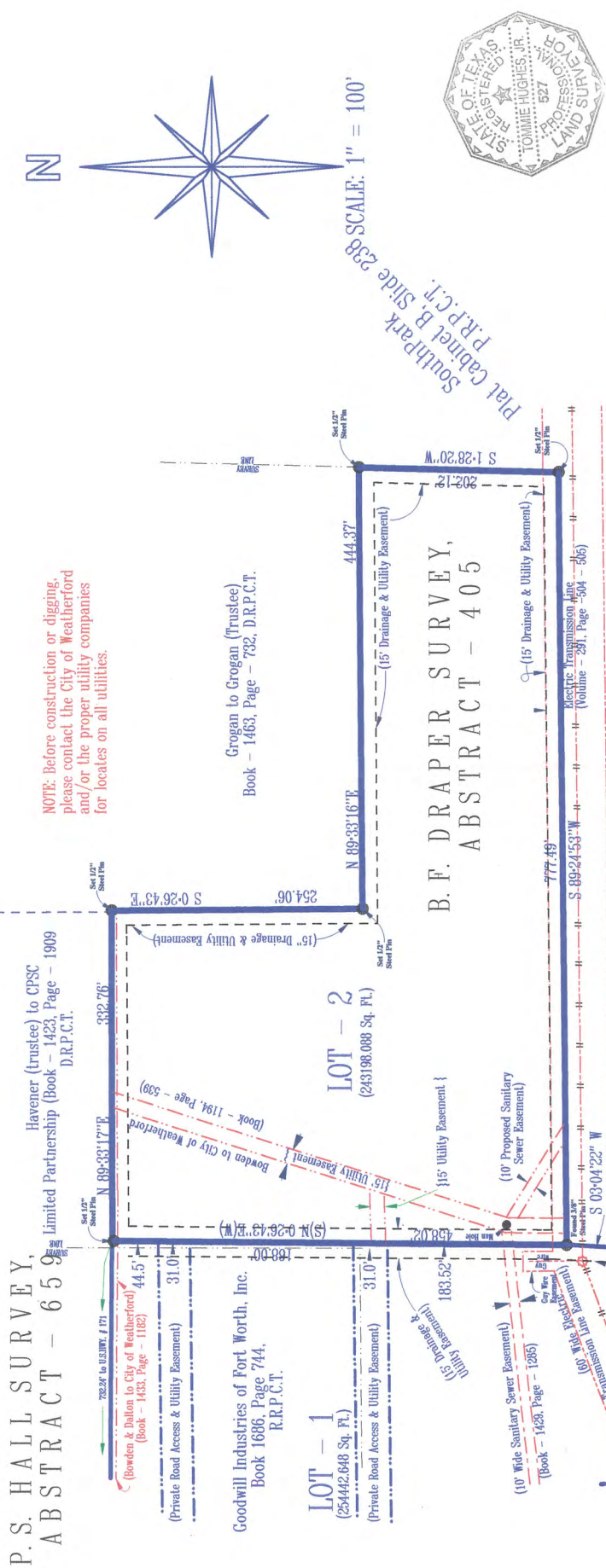
(817) 927-0050 | woodcrestcapital.com

5.6 Acres College Park

South Main Street | Weatherford TX

Woodcrest Capital, LLC
 3113 South University Drive, Suite 600
 Fort Worth, TX 76109

5.6 Acres College Park | Weatherford, Texas



TOMMIE HUGHES AND ASSOCIATES P.C.
 Registered Professional Land Surveyors
 1414 S. MAIN STREET
 WEATHERFORD, TEXAS
 Home 613-1164
 Office 594-5374 or 596-0272

I, Tommie Hughes, Jr., certify that this map was prepared from field notes of an actual ground survey made by me or under my supervision and to the best of my knowledge and belief represents said survey, and that there are no visible encroachments or protrusions other than those shown on the plat.

Date December 9, 1999 No. 17,988
 PTM 2 C:simpleysurveys\17988A.zak SHEET 1 OF 2
 PTM 2 DA17988A.ZAK