



WOODCREST
CAPITAL, LLC

12.1 Acres Edgewood NM

10 Liberty Square Circle | Edgewood NM



| Traffic Counts | |
|----------------|------------|
| I-40 | 20,055 VPD |
| US Route 66 | 6,577 VPD |
| NM-344 | 11,419 VPD |

| Demographics | 1-mile | 3-mile | 5-mile |
|-------------------|----------|----------|----------|
| Population | 1,079 | 7,595 | 12,185 |
| Households | 437 | 3,018 | 4,792 |
| Average HH Income | \$78,619 | \$76,991 | \$83,265 |

*Demographics provided by CoStar Group, www.costar.com, 2021 dataset

**LAND FOR
SALE**

(817) 927-0050

**ACRES:
+/- 12.1**

WILL SUBDIVIDE

**ZONING:
"C-2"**

Commercial

Woodcrest Capital, LLC
3113 South University Drive, Suite 600
Fort Worth, TX 76109
www.woodcrestcapital.com

The information contained herein has been given to us by the owner of the property or other sources we deem reliable. We have no reason to doubt its accuracy, but we do not guarantee it. All information should be verified prior to purchase or lease.

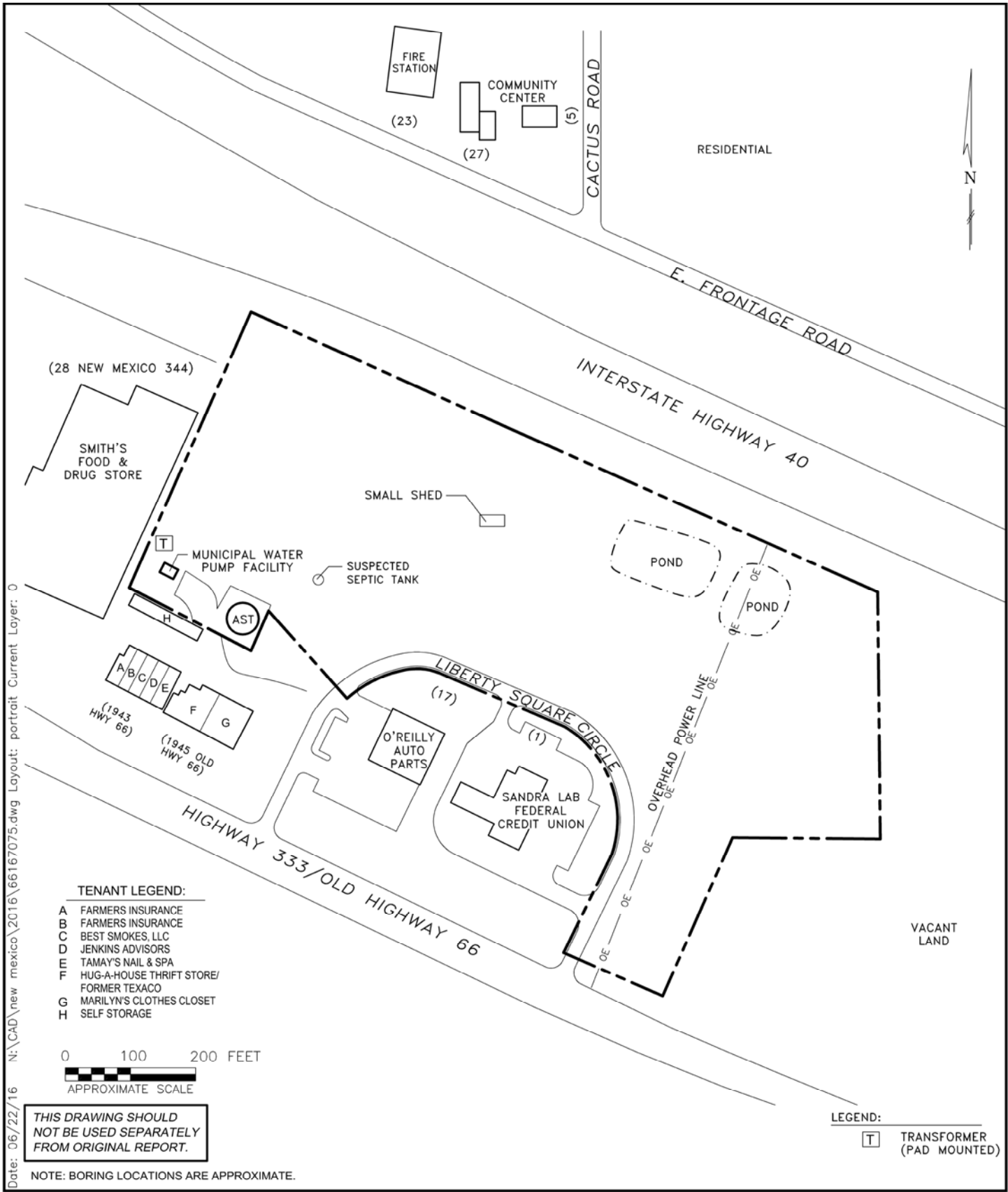
(817) 927-0050 | woodcrestcapital.com

12.1 Acres Edgewood NM

10 Liberty Square Circle | Edgewood NM

Woodcrest Capital, LLC
 3113 South University Drive, Suite 600
 Fort Worth, TX 76109

12.1 ACRES EDGEWOOD NM | Edgewood, New Mexico



| | |
|--------------|-----|
| Project Mgr: | MRH |
| Drawn By: | CDD |
| Checked By: | MRH |
| Approved By: | MRH |

| | |
|-------------|----------|
| Project No. | 66167075 |
| Scale: | AS SHOWN |
| Date: | 06/22/16 |

Terracon
 Consulting Engineers and Scientists

4905 Hawkins NE Albuquerque, New Mexico 87109
 PH. (505) 797-4287 FAX. (505) 797-4288

SITE DIAGRAM

12-ACRE TRACT
 10 LIBERTY SQUARE CIRCLE
 EDGEWOOD, SANTA FE COUNTY, NEW MEXICO

| |
|----------------|
| EXHIBIT |
| 2 |