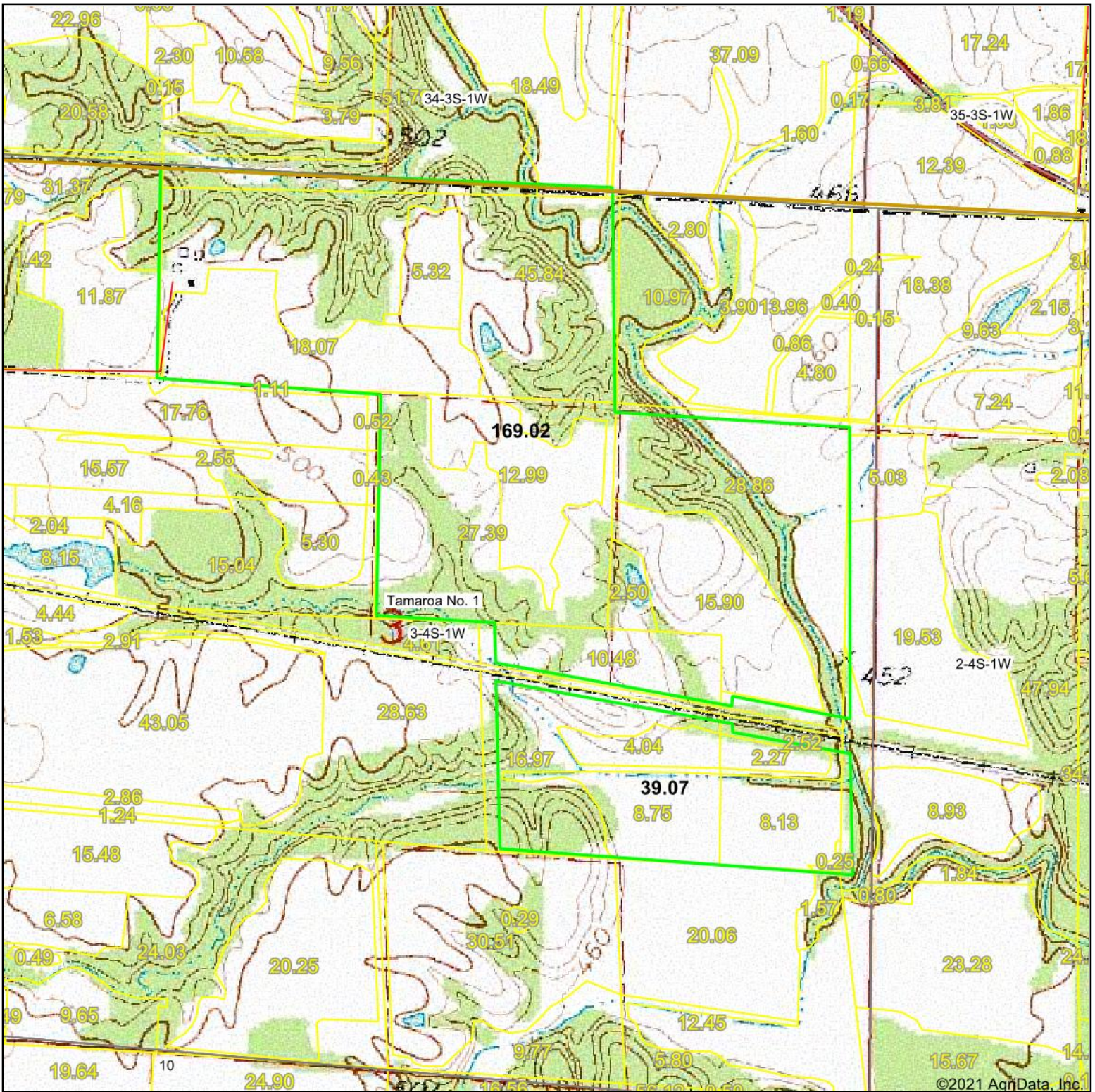


# Topography Map



map center: 38° 12' 28.11, -89° 11' 25.19

0ft 893ft 1787ft

**3-4S-1W**  
**Perry County**  
**Illinois**



11/3/2021



Maps Provided By:



© AgriData, Inc. 2021 www.AgriDataInc.com

Field borders provided by Farm Service Agency as of 5/21/2008.