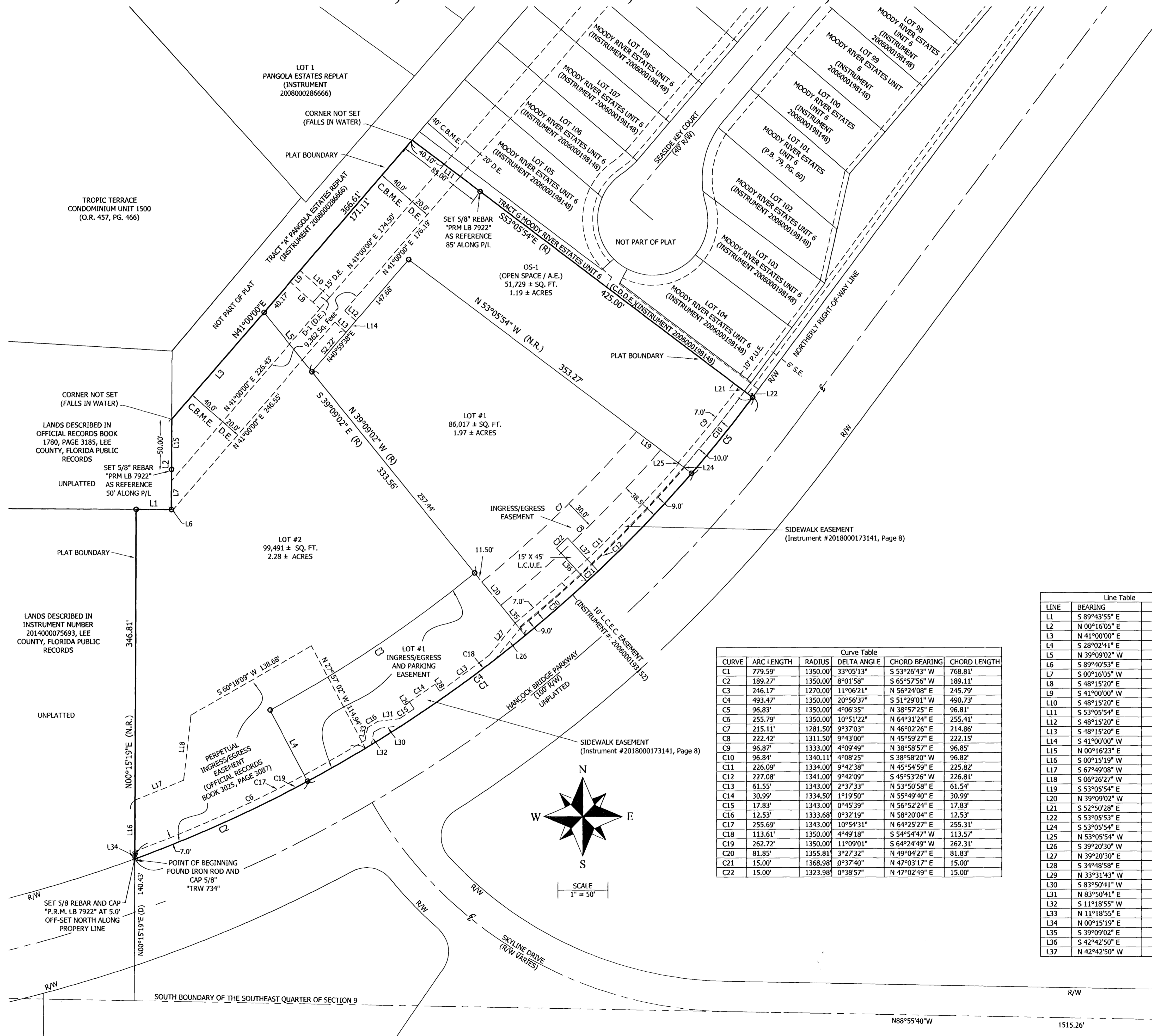


KING ENGINEERING ASSOCIATES, INC.
 324 NICHOLAS PARKWAY WEST, SUITE A
 CAPE CORAL, FLORIDA 33991
 PHONE 239-673-9541 FAX 239-424-8181
 FLORIDA AUTHORIZATION NO. LB 2610

COMMERCIAL CENTER AT MOODY RIVER

A SUBDIVISION LYING IN SECTION 9, TOWNSHIP 44 SOUTH, RANGE 24 EAST, LEE COUNTY, FLORIDA.

INSTRUMENT # 2018000226370



| Curve Table | | | | | |
|-------------|------------|----------|-------------|---------------|--------------|
| CURVE | ARC LENGTH | RADIUS | DELTA ANGLE | CHORD BEARING | CHORD LENGTH |
| C1 | 779.59' | 1350.00' | 33°05'13" | S 53°26'43" W | 768.81' |
| C2 | 189.27' | 1350.00' | 8°01'58" | S 65°57'56" W | 189.11' |
| C3 | 246.17' | 1270.00' | 11°06'21" | N 56°24'08" E | 245.79' |
| C4 | 493.47' | 1350.00' | 20°56'37" | S 51°29'01" W | 490.73' |
| C5 | 96.83' | 1350.00' | 4°06'35" | N 38°57'25" E | 96.81' |
| C6 | 255.79' | 1350.00' | 10°51'22" | N 64°31'24" E | 255.41' |
| C7 | 215.11' | 1281.50' | 9°37'03" | N 46°02'26" E | 214.86' |
| C8 | 222.42' | 1311.50' | 9°43'00" | N 45°59'27" E | 222.15' |
| C9 | 96.87' | 1333.00' | 4°09'49" | N 38°58'57" E | 96.85' |
| C10 | 96.84' | 1340.11' | 4°08'25" | S 38°58'20" W | 96.82' |
| C11 | 226.09' | 1334.00' | 9°42'38" | N 45°54'59" E | 225.82' |
| C12 | 227.08' | 1341.00' | 9°42'09" | S 45°53'26" W | 226.81' |
| C13 | 61.55' | 1343.00' | 2°37'33" | N 53°50'58" E | 61.54' |
| C14 | 30.99' | 1334.50' | 1°19'50" | N 55°49'40" E | 30.99' |
| C15 | 17.83' | 1343.00' | 0°45'39" | N 56°52'24" E | 17.83' |
| C16 | 12.53' | 1333.68' | 0°32'19" | N 58°20'04" E | 12.53' |
| C17 | 255.69' | 1343.00' | 10°54'31" | N 64°25'27" E | 255.31' |
| C18 | 113.61' | 1350.00' | 4°49'18" | S 54°54'47" W | 113.57' |
| C19 | 262.72' | 1350.00' | 11°09'01" | S 64°24'49" W | 262.31' |
| C20 | 81.85' | 1355.81' | 3°27'32" | N 49°04'27" E | 81.83' |
| C21 | 15.00' | 1368.98' | 0°37'40" | N 47°03'17" E | 15.00' |
| C22 | 15.00' | 1323.98' | 0°38'57" | N 47°02'49" E | 15.00' |

| Line Table | | |
|------------|---------------|----------|
| LINE | BEARING | DISTANCE |
| L1 | S 89°43'55" E | 35.23' |
| L2 | N 00°16'05" E | 89.76' |
| L3 | N 41°00'00" E | 140.32' |
| L4 | S 28°02'41" E | 80.00' |
| L5 | N 39°09'02" W | 76.12' |
| L6 | S 89°40'53" E | 1.86' |
| L7 | S 00°16'05" W | 28.49' |
| L8 | S 48°15'20" E | 40.00' |
| L9 | S 41°00'00" W | 15.00' |
| L10 | S 48°15'20" E | 40.00' |
| L11 | S 53°05'54" E | 20.05' |
| L12 | S 48°15'20" E | 15.00' |
| L13 | S 48°15'20" E | 15.00' |
| L14 | S 41°00'00" W | 15.00' |
| L15 | N 00°16'23" E | 61.30' |
| L16 | S 00°15'19" W | 58.16' |
| L17 | S 67°49'08" W | 52.56' |
| L18 | S 06°26'27" W | 65.10' |
| L19 | S 53°05'54" E | 30.08' |
| L20 | N 39°09'02" W | 30.00' |
| L21 | S 52°50'28" E | 7.00' |
| L22 | S 53°05'53" E | 10.00' |
| L24 | S 53°05'54" E | 1.00' |
| L25 | N 53°05'54" W | 1.00' |
| L26 | S 39°20'30" W | 42.31' |
| L27 | N 39°20'30" E | 42.20' |
| L28 | S 34°48'58" E | 8.50' |
| L29 | N 33°31'43" W | 8.50' |
| L30 | S 83°50'41" W | 21.18' |
| L31 | N 83°50'41" E | 21.13' |
| L32 | S 11°18'55" W | 12.68' |
| L33 | N 11°18'55" E | 12.65' |
| L34 | N 00°15'19" E | 7.46' |
| L35 | S 39°09'02" E | 38.50' |
| L36 | S 42°42'50" E | 45.00' |
| L37 | N 42°42'50" W | 45.00' |

LEGEND

- ◆ FOUND NAIL AND TAB
- △ SET NAIL AND TAB "P.C.P. LB 7922"
- FOUND STEEL PIN
- SET 5/8" IRON ROD AND CAP "P.R.M. LB 7922"
- CONC. MONUMENT
- SQ. FT. CONC. CONCRETE
- MON. MONUMENT
- R/W RIGHT OF WAY
- ℄ CENTERLINE
- D.E. DRAINAGE EASEMENT
- P.U.E. PUBLIC UTILITY EASEMENT
- A.E. ACCESS EASEMENT
- S.E. SIDEWALK EASEMENT
- C.B.M.E. CANAL BANK MAINTENANCE EASEMENT
- C.D.D.E. COMMUNITY DEVELOPMENT DISTRICT EASEMENT
- L.C.U.E. LEE COUNTY UTILITY EASEMENT
- I.E.E. INGRESS/EGRESS EASEMENT
- O.R. OFFICIAL RECORDS BOOK
- PG. PAGE
- (R) RADIAL
- (N.R.) NON-RADIAL
- C1 CURVE NUMBER (TYPICAL)
- L1 LINE NUMBER (TYPICAL)
- P/L PROPERTY LINE

DOS 2017 - 00089 / PLT 2017 - 00033

POINT OF COMMENCEMENT
 SOUTHEAST CORNER
 SECTION 9