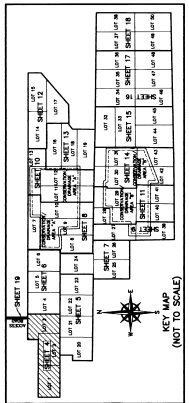
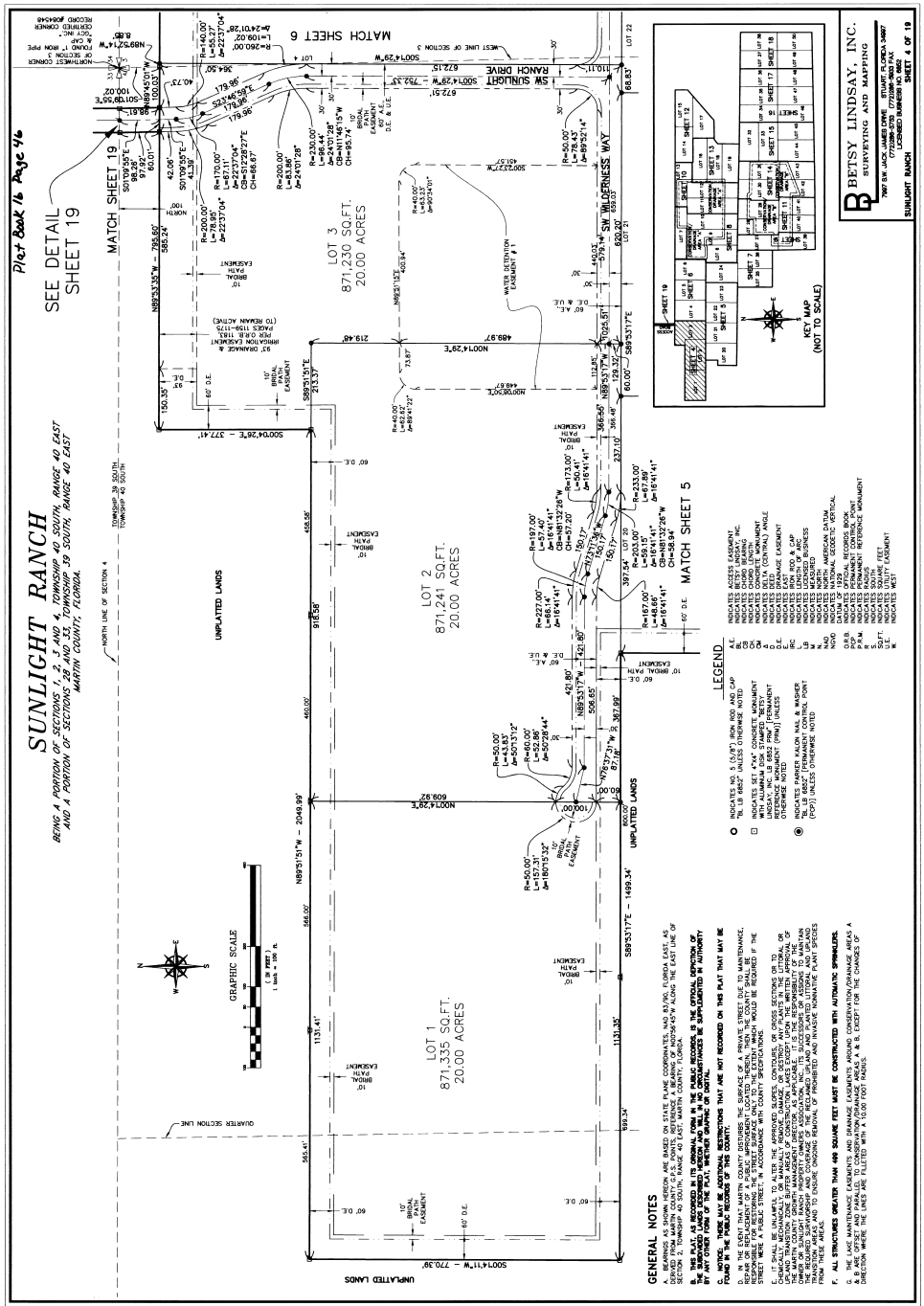


SUNLIGHT RANCH

BEING A PORTION OF SECTIONS 1, 2, 3 AND 4, TOWNSHIP 19 SOUTH, RANGE 40 EAST AND A PORTION OF SECTIONS 1, 2, 3 AND 4, TOWNSHIP 19 SOUTH, RANGE 40 EAST, MARION COUNTY, FLORIDA.

SEE DETAIL SHEET 19



LEGEND

- INDICATES NO. 5 (C/T) IRON ROD AND CAP
- ▲ INDICATES UNDESIGNATED POINT
- INDICATES CHAIN DRIVING
- ▣ INDICATES ONLY CONTROL POINT
- ▢ INDICATES ONLY CONTROL POINT
- ▤ INDICATES DIAGONAL EASEMENT
- ▥ INDICATES IRON ROD AND CAP
- ▦ INDICATES MORTGAGE BUSINESS
- ▧ INDICATES NORTH
- ▨ INDICATES SOUTH
- ▩ INDICATES AMERICAN DATUM
- INDICATES 1983 NATIONAL GEOGRAPHIC DATUM
- ▬ INDICATES PERMANENT CONTROL POINT
- ▭ INDICATES PERMANENT REFERENCE POINT
- ▮ INDICATES BOUNDARY
- ▯ INDICATES ADJUTANT
- ▰ INDICATES WEST

GENERAL NOTES

1. THIS PLAT IS SUBJECT TO ALL RECORDS OF RECORDS IN THE PUBLIC RECORDS OF MARION COUNTY, FLORIDA, INCLUDING BUT NOT LIMITED TO THE RECORDS OF THE MARION COUNTY BOARD OF COUNTY COMMISSIONERS AND THE MARION COUNTY BOARD OF ALDELMAN AND JUDGES.
2. THE BOUNDARIES OF THE PLAT ARE SHOWN AS BEING THE CORNER POINTS OF THE PLAT. THE CORNER POINTS ARE SHOWN AS BEING THE CORNER POINTS OF THE PLAT.
3. THE BOUNDARIES OF THE PLAT ARE SHOWN AS BEING THE CORNER POINTS OF THE PLAT. THE CORNER POINTS ARE SHOWN AS BEING THE CORNER POINTS OF THE PLAT.
4. THE BOUNDARIES OF THE PLAT ARE SHOWN AS BEING THE CORNER POINTS OF THE PLAT. THE CORNER POINTS ARE SHOWN AS BEING THE CORNER POINTS OF THE PLAT.
5. THE BOUNDARIES OF THE PLAT ARE SHOWN AS BEING THE CORNER POINTS OF THE PLAT. THE CORNER POINTS ARE SHOWN AS BEING THE CORNER POINTS OF THE PLAT.
6. THE BOUNDARIES OF THE PLAT ARE SHOWN AS BEING THE CORNER POINTS OF THE PLAT. THE CORNER POINTS ARE SHOWN AS BEING THE CORNER POINTS OF THE PLAT.
7. THE BOUNDARIES OF THE PLAT ARE SHOWN AS BEING THE CORNER POINTS OF THE PLAT. THE CORNER POINTS ARE SHOWN AS BEING THE CORNER POINTS OF THE PLAT.
8. THE BOUNDARIES OF THE PLAT ARE SHOWN AS BEING THE CORNER POINTS OF THE PLAT. THE CORNER POINTS ARE SHOWN AS BEING THE CORNER POINTS OF THE PLAT.
9. THE BOUNDARIES OF THE PLAT ARE SHOWN AS BEING THE CORNER POINTS OF THE PLAT. THE CORNER POINTS ARE SHOWN AS BEING THE CORNER POINTS OF THE PLAT.
10. THE BOUNDARIES OF THE PLAT ARE SHOWN AS BEING THE CORNER POINTS OF THE PLAT. THE CORNER POINTS ARE SHOWN AS BEING THE CORNER POINTS OF THE PLAT.

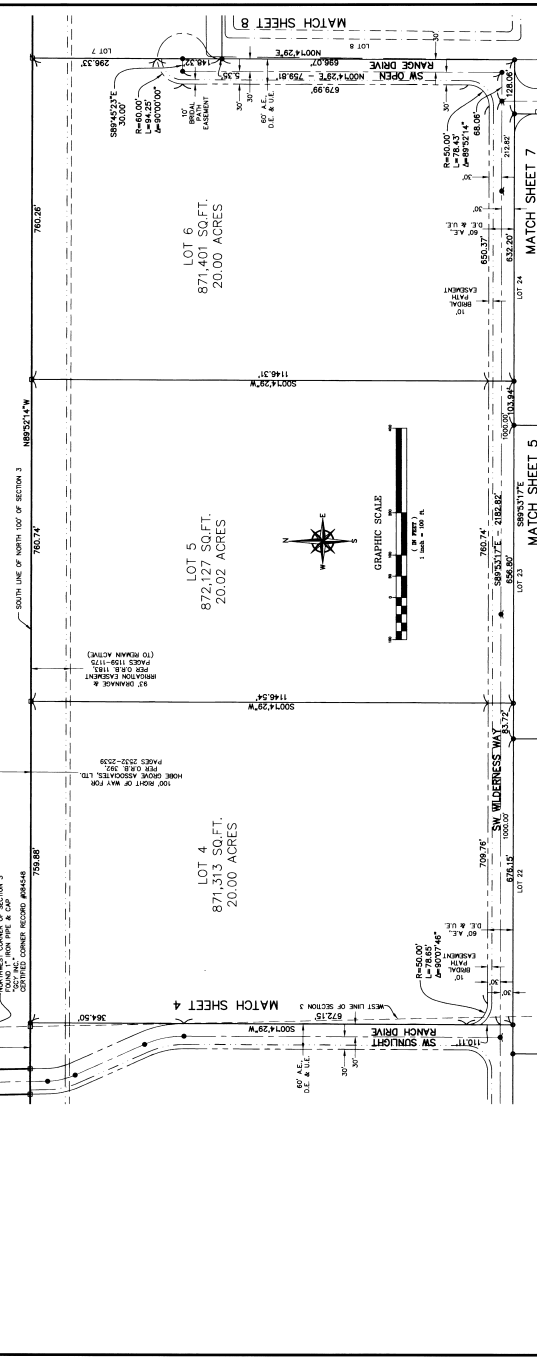
BETSY LINDSAY, INC.
 SURVEYING AND MAPPING
 7800 SW JACK LAMAR DRIVE SUITE 100A
 JACKSONVILLE, FLORIDA 32216
 LICENSE NUMBER 36866
 SUNLIGHT RANCH
 SHEET 5 OF 10

SUNLIGHT RANCH

BEING A PORTION OF SECTIONS 4, 5 AND 6, TOWNSHIP 40 SOUTH, RANGE 40 EAST AND A PORTION OF SECTIONS 7, 8 AND 9, TOWNSHIP 40 SOUTH, RANGE 40 EAST, MARTIN COUNTY, FLORIDA.

UNPLATTED LANDS

TOWNSHIP 39 SOUTH
TOWNSHIP 40 SOUTH

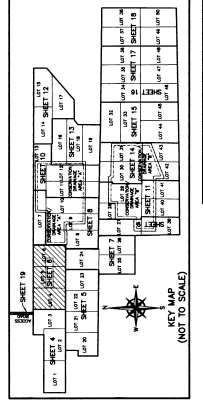


GENERAL NOTES

- A. BEARINGS AS SHOWN HEREON ARE BASED ON STATE PLANE COORDINATES AND EXCEPT WHERE SHOWN OTHERWISE, ARE REFERRED TO THE MERIDIAN OF SOUTHWEST FLORIDA.
- B. THIS PLAN, AS RECORDED IN ITS ORIGINAL FORM IN THE PUBLIC RECORDS, IS THE OFFICIAL RECORD OF THE SURVEY. THIS PLAN, AS RECORDED IN ITS REPRODUCED FORM, IS NOT A SUBSTITUTE FOR THE ORIGINAL RECORD.
- C. THIS PLAN IS THE PROPERTY OF BETSY LINDSAY, INC. NO PART OF THIS PLAN IS TO BE REPRODUCED OR TRANSMITTED IN ANY FORM OR BY ANY MEANS, ELECTRONIC OR MECHANICAL, INCLUDING PHOTOCOPYING, RECORDING, OR BY ANY INFORMATION STORAGE AND RETRIEVAL SYSTEM, WITHOUT THE WRITTEN PERMISSION OF BETSY LINDSAY, INC.
- D. IN THE EVENT THAT MARTIN COUNTY ORDERS THE SURFACE OF A PRIVATE STREET DUE TO MAINTENANCE, RESPONSIBILITY FOR RESTORING THE SURFACE AND THE EXISTENCE OF THE SURFACE SHALL REMAIN WITH THE ORIGINAL LANDOWNER.
- E. IT SHALL BE UNLAWFUL TO ALTER, THE APPROVED SURVEY CONTROLS, OR OTHER SURVEY MARKS OR TO REMOVE OR DESTROY ANY SURVEY MARKS OR CONTROLS WITHOUT THE WRITTEN PERMISSION OF BETSY LINDSAY, INC. ANY ALTERATION OF SURVEY MARKS OR CONTROLS WITHOUT THE WRITTEN PERMISSION OF BETSY LINDSAY, INC. SHALL BE UNLAWFUL.
- F. ALL STRUCTURES GREATER THAN 400 SQUARE FEET MUST BE CONSTRUCTED WITH AUTOMATIC SPRAWLZONES.
- G. THE LAKE MAINTENANCE EXPOSURES AND GRASSMAZE EXPOSURES AROUND CONSERVATION/GRASSMAZE AREAS A MUST BE MAINTAINED IN ACCORDANCE WITH THE GRASSMAZE AND CONSERVATION/GRASSMAZE AREAS MAINTENANCE PLAN, WHICH IS ATTACHED TO THIS PLAN AS EXHIBIT A & B. EXCEPT FOR THE CHANGES OF THIS PLAN, WHERE THE LAKE USE IS LIMITED TO A 1000 FOOT RADIUS.

LEGEND

- INDICATES AS TO WHAT IS SHOWN IN THIS MAP
- INDICATES THE "X" CONCRETE MONUMENT
- INDICATES THE "Y" CONCRETE MONUMENT
- INDICATES THE "Z" CONCRETE MONUMENT
- INDICATES THE "W" CONCRETE MONUMENT
- INDICATES THE "V" CONCRETE MONUMENT
- INDICATES THE "U" CONCRETE MONUMENT
- INDICATES THE "T" CONCRETE MONUMENT
- INDICATES THE "S" CONCRETE MONUMENT
- INDICATES THE "R" CONCRETE MONUMENT
- INDICATES THE "Q" CONCRETE MONUMENT
- INDICATES THE "P" CONCRETE MONUMENT
- INDICATES THE "O" CONCRETE MONUMENT
- INDICATES THE "N" CONCRETE MONUMENT
- INDICATES THE "M" CONCRETE MONUMENT
- INDICATES THE "L" CONCRETE MONUMENT
- INDICATES THE "K" CONCRETE MONUMENT
- INDICATES THE "J" CONCRETE MONUMENT
- INDICATES THE "I" CONCRETE MONUMENT
- INDICATES THE "H" CONCRETE MONUMENT
- INDICATES THE "G" CONCRETE MONUMENT
- INDICATES THE "F" CONCRETE MONUMENT
- INDICATES THE "E" CONCRETE MONUMENT
- INDICATES THE "D" CONCRETE MONUMENT
- INDICATES THE "C" CONCRETE MONUMENT
- INDICATES THE "B" CONCRETE MONUMENT
- INDICATES THE "A" CONCRETE MONUMENT

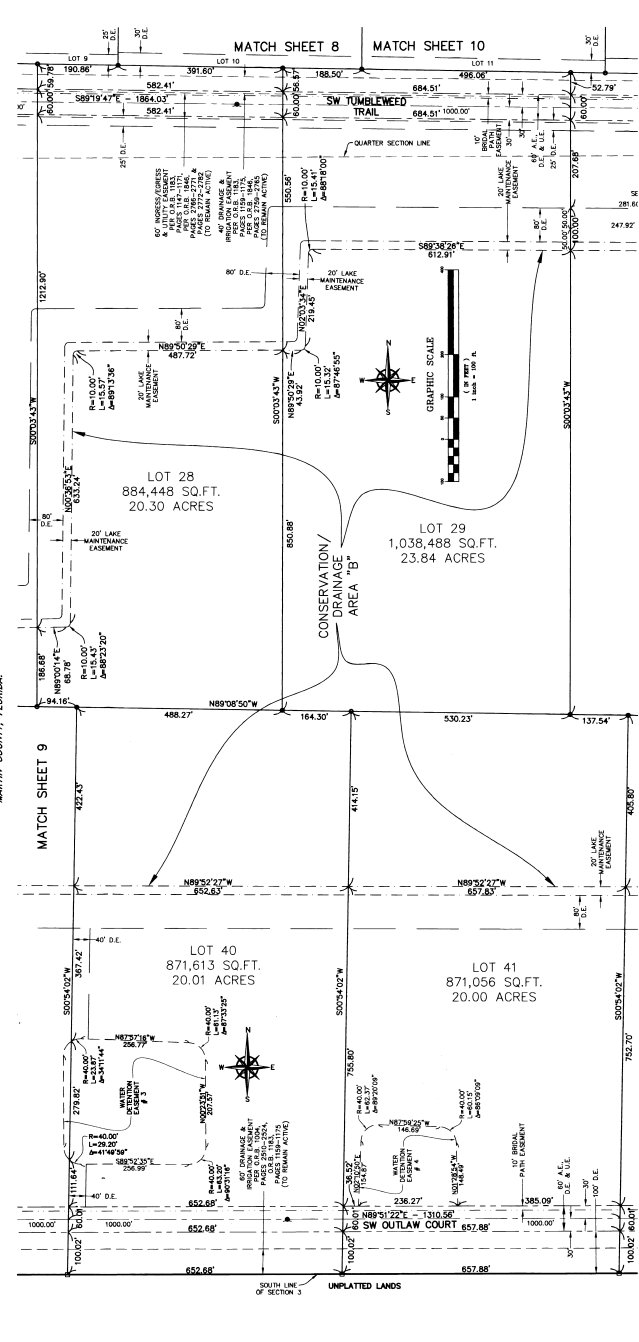


B BETSY LINDSAY, INC.
SURVEYING AND MAPPING
1007 SW JACK JAMES DRIVE SUITE 100
DADE COUNTY FLORIDA 33126
TEL: 305.229.1000
FAX: 305.229.1001
WWW.BETSYLINDSAY.COM

SUNLIGHT RANCH
SHEET 8 OF 19

SUNLIGHT RANCH

BEING A PORTION OF SECTIONS 1, 2, 3 AND 4, TOWNSHIP 40 SOUTH, RANGE 40 EAST
AND A PORTION OF SECTIONS 19 SOUTH, RANGE 40 EAST
MARION COUNTY, FLORIDA



GENERAL NOTES

- 1. ALL DIMENSIONS ARE BASED ON STATE PLANE COORDINATES, NAD 83/98, FOR FLORIDA, EAST, AS SHOWN ON MAPS OF MARION COUNTY, FLORIDA, AND ARE MEASURED FROM THE CORNER OF SECTION 2, TOWNSHIP 40 SOUTH, RANGE 40 EAST, MARION COUNTY, FLORIDA.
- 2. THE DEED DESCRIBING THE LAND SHOWN HEREON IS FILED IN PUBLIC RECORDS IN MARION COUNTY, FLORIDA, AND IS REFERRED TO BY REFERENCE TO THE PUBLIC RECORDS OF THIS COUNTY.
- 3. THE DEED DESCRIBING THE LAND SHOWN HEREON IS FILED IN PUBLIC RECORDS IN MARION COUNTY, FLORIDA, AND IS REFERRED TO BY REFERENCE TO THE PUBLIC RECORDS OF THIS COUNTY.
- 4. THE DEED DESCRIBING THE LAND SHOWN HEREON IS FILED IN PUBLIC RECORDS IN MARION COUNTY, FLORIDA, AND IS REFERRED TO BY REFERENCE TO THE PUBLIC RECORDS OF THIS COUNTY.
- 5. THE DEED DESCRIBING THE LAND SHOWN HEREON IS FILED IN PUBLIC RECORDS IN MARION COUNTY, FLORIDA, AND IS REFERRED TO BY REFERENCE TO THE PUBLIC RECORDS OF THIS COUNTY.
- 6. THE DEED DESCRIBING THE LAND SHOWN HEREON IS FILED IN PUBLIC RECORDS IN MARION COUNTY, FLORIDA, AND IS REFERRED TO BY REFERENCE TO THE PUBLIC RECORDS OF THIS COUNTY.
- 7. THE DEED DESCRIBING THE LAND SHOWN HEREON IS FILED IN PUBLIC RECORDS IN MARION COUNTY, FLORIDA, AND IS REFERRED TO BY REFERENCE TO THE PUBLIC RECORDS OF THIS COUNTY.
- 8. THE DEED DESCRIBING THE LAND SHOWN HEREON IS FILED IN PUBLIC RECORDS IN MARION COUNTY, FLORIDA, AND IS REFERRED TO BY REFERENCE TO THE PUBLIC RECORDS OF THIS COUNTY.
- 9. THE DEED DESCRIBING THE LAND SHOWN HEREON IS FILED IN PUBLIC RECORDS IN MARION COUNTY, FLORIDA, AND IS REFERRED TO BY REFERENCE TO THE PUBLIC RECORDS OF THIS COUNTY.
- 10. THE DEED DESCRIBING THE LAND SHOWN HEREON IS FILED IN PUBLIC RECORDS IN MARION COUNTY, FLORIDA, AND IS REFERRED TO BY REFERENCE TO THE PUBLIC RECORDS OF THIS COUNTY.
- 11. THE DEED DESCRIBING THE LAND SHOWN HEREON IS FILED IN PUBLIC RECORDS IN MARION COUNTY, FLORIDA, AND IS REFERRED TO BY REFERENCE TO THE PUBLIC RECORDS OF THIS COUNTY.
- 12. THE DEED DESCRIBING THE LAND SHOWN HEREON IS FILED IN PUBLIC RECORDS IN MARION COUNTY, FLORIDA, AND IS REFERRED TO BY REFERENCE TO THE PUBLIC RECORDS OF THIS COUNTY.
- 13. THE DEED DESCRIBING THE LAND SHOWN HEREON IS FILED IN PUBLIC RECORDS IN MARION COUNTY, FLORIDA, AND IS REFERRED TO BY REFERENCE TO THE PUBLIC RECORDS OF THIS COUNTY.
- 14. THE DEED DESCRIBING THE LAND SHOWN HEREON IS FILED IN PUBLIC RECORDS IN MARION COUNTY, FLORIDA, AND IS REFERRED TO BY REFERENCE TO THE PUBLIC RECORDS OF THIS COUNTY.
- 15. THE DEED DESCRIBING THE LAND SHOWN HEREON IS FILED IN PUBLIC RECORDS IN MARION COUNTY, FLORIDA, AND IS REFERRED TO BY REFERENCE TO THE PUBLIC RECORDS OF THIS COUNTY.
- 16. THE DEED DESCRIBING THE LAND SHOWN HEREON IS FILED IN PUBLIC RECORDS IN MARION COUNTY, FLORIDA, AND IS REFERRED TO BY REFERENCE TO THE PUBLIC RECORDS OF THIS COUNTY.

LEGEND

- 1. INDICATES ACCESS EASEMENT
- 2. INDICATES BOUNDARY MONUMENT
- 3. INDICATES CHANGING MONUMENT
- 4. INDICATES CORNER MONUMENT
- 5. INDICATES CURB MONUMENT
- 6. INDICATES DRAINAGE MONUMENT
- 7. INDICATES EASEMENT MONUMENT
- 8. INDICATES LAKESIDE MONUMENT
- 9. INDICATES LOT MONUMENT
- 10. INDICATES PLANT MONUMENT
- 11. INDICATES ROAD MONUMENT
- 12. INDICATES SURFACE MONUMENT
- 13. INDICATES UTILITY MONUMENT
- 14. INDICATES WATER MONUMENT
- 15. INDICATES WELL MONUMENT
- 16. INDICATES OTHER MONUMENT

MATCH SHEET 14



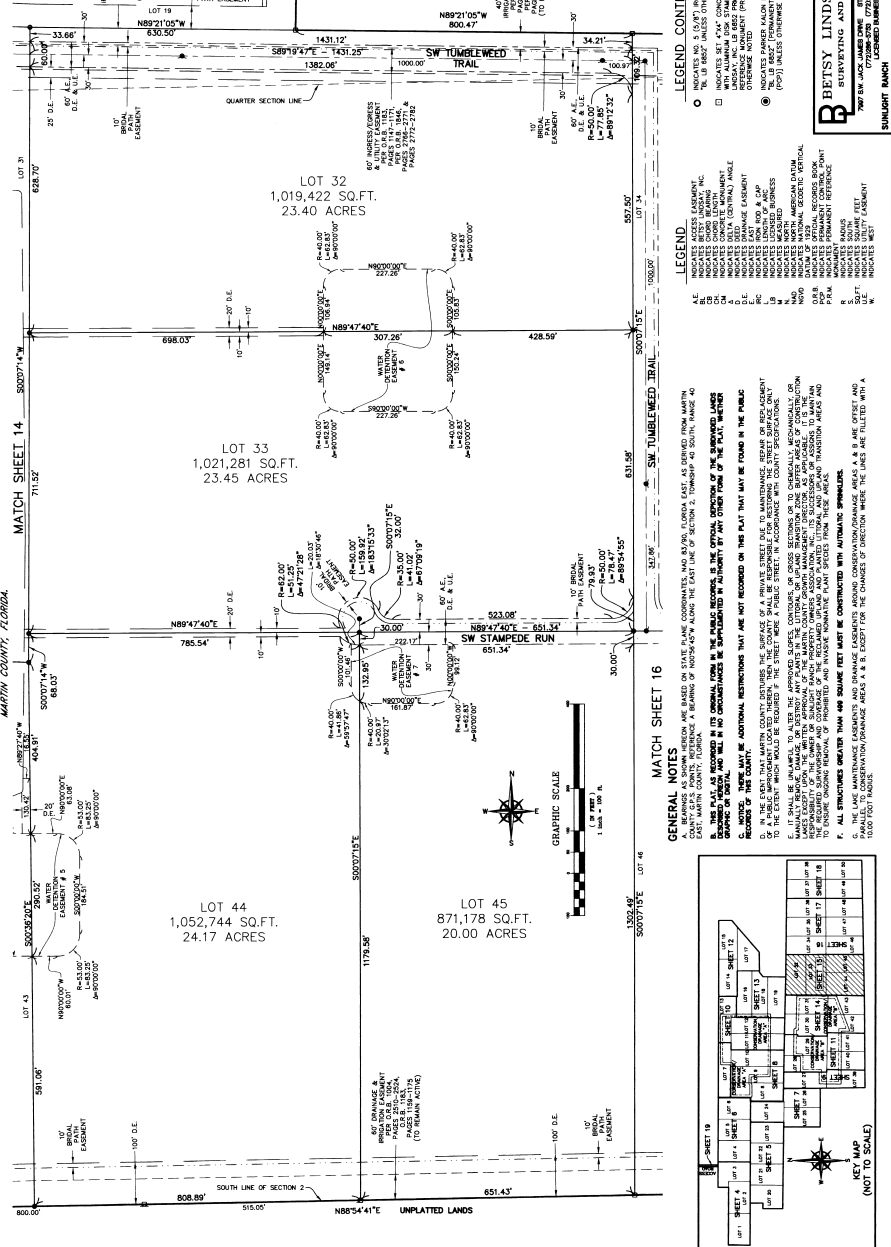
BETSY LINDSAY, INC.
SURVEYING AND MAPPING
7600 NW ANNE JAMES DRIVE SUITE 100
DADE COUNTY FLORIDA 33147
TEL: (954) 399-8200
WWW.BETSYLINDSAY.COM

BEING A PORTION OF SECTIONS 1, 2, 3 AND 4, TOWNSHIP 40 SOUTH, RANGE 40 EAST AND A PORTION OF SECTIONS 25 AND 32, TOWNSHIP 39 SOUTH, RANGE 40 EAST, MARTIN COUNTY, FLORIDA.

LOT 43 1,052,744 SQ. FT. 24.17 ACRES

LOT 44 1,052,744 SQ. FT. 24.17 ACRES

LOT 45 871,178 SQ. FT. 20.00 ACRES



GENERAL NOTES: A. BEARINGS AND DISTANCES ARE BASED ON STATE PLANE COORDINATES AND 84/796, FLORIDA EAST, AS DERIVED FROM MARTIN COUNTY, FLORIDA. B. THIS PLAN IS RECORDED IN ITS ORIGINAL FORM IN THE PUBLIC RECORDS OF THE OFFICE OF THE CLERK OF THE COUNTY OF MARTIN COUNTY, FLORIDA. C. THE PLAN IS SUBJECT TO ALL EXISTING RECORDS AND RESTRICTIONS THAT ARE NOT RECORDED IN THE PUBLIC RECORDS OF THE COUNTY. D. IN THE EVENT THAT MARTIN COUNTY DETERMINES THE SURFACE OF A PRIVATE STREET DOES NOT MAINTAIN THE GRADE OR PLACEMENT TO THE CENTERLINE OF THE STREET, THE STREET SHALL BE RECONSTRUCTED TO THE CENTERLINE OF THE STREET IN ACCORDANCE WITH COUNTY SPECIFICATIONS. E. ALL STRUCTURES GREATER THAN 400 SQUARE FEET MUST BE CONSTRUCTED WITH AUTOMATIC SPRINKLER. F. ALL CONSTRUCTION SHALL BE IN ACCORDANCE WITH THE LATEST EDITION OF THE FLORIDA BUILDING CODE AND THE LATEST EDITION OF THE FLORIDA PLUMBING CODE.

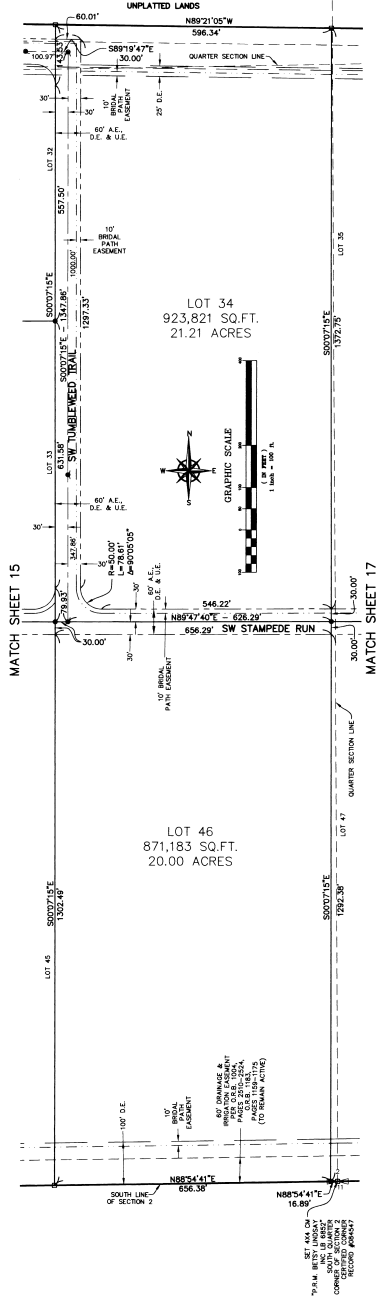


LEGEND: ALE INDICATES 1/2\"

BETSY LINDSAY, INC. SURVEYING AND MAPPING 7800 NW JACK JAMES DRIVE SUITE 100, PALM BEACH, FLORIDA 33409

SUNLIGHT RANCH

BEING A PORTION OF SECTIONS 1, 2, 3 AND 4, TOWNSHIP 40 SOUTH, RANGE 40 EAST AND A PORTION OF SECTIONS 28 AND 33, TOWNSHIP 39 SOUTH, RANGE 40 EAST, MARTIN COUNTY, FLORIDA.

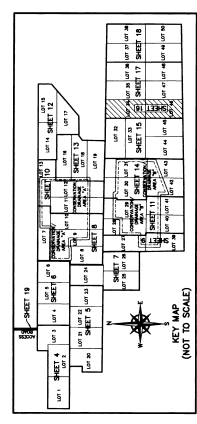


GENERAL NOTES

- BEARING AND DISTANCE ARE BASED ON STATE PLANE COORDINATES, NAD 83, FLORIDA EAST, AS SHOWN ON THE PLAN.
- THIS PLAN IS TO BE RECORDED IN THE PUBLIC RECORDS OF THE OFFICE OF THE COUNTY CLERK OF MARTIN COUNTY, FLORIDA.
- ALL STRUCTURES OTHER THAN ARE SHOWN MUST BE CONSTRUCTED WITH AUTOMATIC SPRAWLERS.
- THE USE OF MAINTENANCE EASEMENTS AND DRAINAGE EASEMENTS AROUND CONSERVATION/GRASSLAND AREAS IS PERMITTED WHERE THE LAND HAS BEEN FOLDED INTO A LOT.

LEGEND

- INDICATES NO. 5 (SLOT) BIRM ROD AND CAP, 1/2" DIA. UNLESS NOTED OTHERWISE.
- INDICATES SET 4" x 4" CONCRETE FOUNDATION FOR UTILITY STRUCTURE.
- ⊙ INDICATES PERMANENT RETAINMENT WALL UNLESS OTHERWISE NOTED.
- ⊙ INDICATES PERMANENT RETAINMENT WALL 4' HIGH UNLESS OTHERWISE NOTED.
- ⊙ INDICATES PERMANENT RETAINMENT WALL 6' HIGH UNLESS OTHERWISE NOTED.
- ⊙ INDICATES PERMANENT RETAINMENT WALL 8' HIGH UNLESS OTHERWISE NOTED.
- ⊙ INDICATES PERMANENT RETAINMENT WALL 10' HIGH UNLESS OTHERWISE NOTED.
- ⊙ INDICATES PERMANENT RETAINMENT WALL 12' HIGH UNLESS OTHERWISE NOTED.
- ⊙ INDICATES PERMANENT RETAINMENT WALL 14' HIGH UNLESS OTHERWISE NOTED.
- ⊙ INDICATES PERMANENT RETAINMENT WALL 16' HIGH UNLESS OTHERWISE NOTED.
- ⊙ INDICATES PERMANENT RETAINMENT WALL 18' HIGH UNLESS OTHERWISE NOTED.
- ⊙ INDICATES PERMANENT RETAINMENT WALL 20' HIGH UNLESS OTHERWISE NOTED.
- ⊙ INDICATES PERMANENT RETAINMENT WALL 22' HIGH UNLESS OTHERWISE NOTED.
- ⊙ INDICATES PERMANENT RETAINMENT WALL 24' HIGH UNLESS OTHERWISE NOTED.
- ⊙ INDICATES PERMANENT RETAINMENT WALL 26' HIGH UNLESS OTHERWISE NOTED.
- ⊙ INDICATES PERMANENT RETAINMENT WALL 28' HIGH UNLESS OTHERWISE NOTED.
- ⊙ INDICATES PERMANENT RETAINMENT WALL 30' HIGH UNLESS OTHERWISE NOTED.
- ⊙ INDICATES PERMANENT RETAINMENT WALL 32' HIGH UNLESS OTHERWISE NOTED.
- ⊙ INDICATES PERMANENT RETAINMENT WALL 34' HIGH UNLESS OTHERWISE NOTED.
- ⊙ INDICATES PERMANENT RETAINMENT WALL 36' HIGH UNLESS OTHERWISE NOTED.
- ⊙ INDICATES PERMANENT RETAINMENT WALL 38' HIGH UNLESS OTHERWISE NOTED.
- ⊙ INDICATES PERMANENT RETAINMENT WALL 40' HIGH UNLESS OTHERWISE NOTED.
- ⊙ INDICATES PERMANENT RETAINMENT WALL 42' HIGH UNLESS OTHERWISE NOTED.
- ⊙ INDICATES PERMANENT RETAINMENT WALL 44' HIGH UNLESS OTHERWISE NOTED.
- ⊙ INDICATES PERMANENT RETAINMENT WALL 46' HIGH UNLESS OTHERWISE NOTED.
- ⊙ INDICATES PERMANENT RETAINMENT WALL 48' HIGH UNLESS OTHERWISE NOTED.
- ⊙ INDICATES PERMANENT RETAINMENT WALL 50' HIGH UNLESS OTHERWISE NOTED.
- ⊙ INDICATES PERMANENT RETAINMENT WALL 52' HIGH UNLESS OTHERWISE NOTED.
- ⊙ INDICATES PERMANENT RETAINMENT WALL 54' HIGH UNLESS OTHERWISE NOTED.
- ⊙ INDICATES PERMANENT RETAINMENT WALL 56' HIGH UNLESS OTHERWISE NOTED.
- ⊙ INDICATES PERMANENT RETAINMENT WALL 58' HIGH UNLESS OTHERWISE NOTED.
- ⊙ INDICATES PERMANENT RETAINMENT WALL 60' HIGH UNLESS OTHERWISE NOTED.
- ⊙ INDICATES PERMANENT RETAINMENT WALL 62' HIGH UNLESS OTHERWISE NOTED.
- ⊙ INDICATES PERMANENT RETAINMENT WALL 64' HIGH UNLESS OTHERWISE NOTED.
- ⊙ INDICATES PERMANENT RETAINMENT WALL 66' HIGH UNLESS OTHERWISE NOTED.
- ⊙ INDICATES PERMANENT RETAINMENT WALL 68' HIGH UNLESS OTHERWISE NOTED.
- ⊙ INDICATES PERMANENT RETAINMENT WALL 70' HIGH UNLESS OTHERWISE NOTED.
- ⊙ INDICATES PERMANENT RETAINMENT WALL 72' HIGH UNLESS OTHERWISE NOTED.
- ⊙ INDICATES PERMANENT RETAINMENT WALL 74' HIGH UNLESS OTHERWISE NOTED.
- ⊙ INDICATES PERMANENT RETAINMENT WALL 76' HIGH UNLESS OTHERWISE NOTED.
- ⊙ INDICATES PERMANENT RETAINMENT WALL 78' HIGH UNLESS OTHERWISE NOTED.
- ⊙ INDICATES PERMANENT RETAINMENT WALL 80' HIGH UNLESS OTHERWISE NOTED.
- ⊙ INDICATES PERMANENT RETAINMENT WALL 82' HIGH UNLESS OTHERWISE NOTED.
- ⊙ INDICATES PERMANENT RETAINMENT WALL 84' HIGH UNLESS OTHERWISE NOTED.
- ⊙ INDICATES PERMANENT RETAINMENT WALL 86' HIGH UNLESS OTHERWISE NOTED.
- ⊙ INDICATES PERMANENT RETAINMENT WALL 88' HIGH UNLESS OTHERWISE NOTED.
- ⊙ INDICATES PERMANENT RETAINMENT WALL 90' HIGH UNLESS OTHERWISE NOTED.
- ⊙ INDICATES PERMANENT RETAINMENT WALL 92' HIGH UNLESS OTHERWISE NOTED.
- ⊙ INDICATES PERMANENT RETAINMENT WALL 94' HIGH UNLESS OTHERWISE NOTED.
- ⊙ INDICATES PERMANENT RETAINMENT WALL 96' HIGH UNLESS OTHERWISE NOTED.
- ⊙ INDICATES PERMANENT RETAINMENT WALL 98' HIGH UNLESS OTHERWISE NOTED.
- ⊙ INDICATES PERMANENT RETAINMENT WALL 100' HIGH UNLESS OTHERWISE NOTED.



B. BETSY LINDSAY, INC.
 SURVEYING AND MAPPING
 7807 NW JACK WALKER DRIVE, SUITE 100, BOCA RATON, FLORIDA 33433
 (561) 991-1111
 SUNLIGHT RANCH SHEET 16 OF 18

SUNLIGHT RANCH
 BEING A PORTION OF SECTIONS 1, 2, 3 AND 4, TOWNSHIP 40 SOUTH, RANGE 40 EAST
 AND A PORTION OF SECTIONS 18 AND 35, TOWNSHIP 39 SOUTH, RANGE 40 EAST
 MARTIN COUNTY, FLORIDA

Plat Book 16 Page 46

MATCH SHEET 17

LOT 37
 925,264 SQ.FT.
 21.24 ACRES

LOT 38
 933,289 SQ.FT.
 21.43 ACRES

LOT 49
 871,193 SQ.FT.
 20.00 ACRES

LOT 50
 871,106 SQ.FT.
 20.00 ACRES

UNPLATTED LANDS

SW STAMPEDE RUN

PLAT OF TRANSFER
 PLAT BOOK 14, PAGE 80
 MARTIN COUNTY, FLORIDA

LOT 12

LOT 13

LOT 14

LOT 15

LOT 16

LOT 17

LOT 18

LOT 19

LOT 20

LOT 21

LOT 22

LOT 23

LOT 24

LOT 25

LOT 26

LOT 27

LOT 28

LOT 29

LOT 30

LOT 31

LOT 32

LOT 33

LOT 34

LOT 35

LOT 36

LOT 37

LOT 38

LOT 39

LOT 40

LOT 41

LOT 42

LOT 43

LOT 44

LOT 45

LOT 46

LOT 47

LOT 48

LOT 49

LOT 50

LOT 51

LOT 52

LOT 53

LOT 54

LOT 55

LOT 56

LOT 57

LOT 58

LOT 59

LOT 60

LOT 61

LOT 62

LOT 63

LOT 64

LOT 65

LOT 66

LOT 67

LOT 68

LOT 69

LOT 70

LOT 71

LOT 72

LOT 73

LOT 74

LOT 75

LOT 76

LOT 77

LOT 78

LOT 79

LOT 80

LOT 81

LOT 82

LOT 83

LOT 84

LOT 85

LOT 86

LOT 87

LOT 88

LOT 89

LOT 90

LOT 91

LOT 92

LOT 93

LOT 94

LOT 95

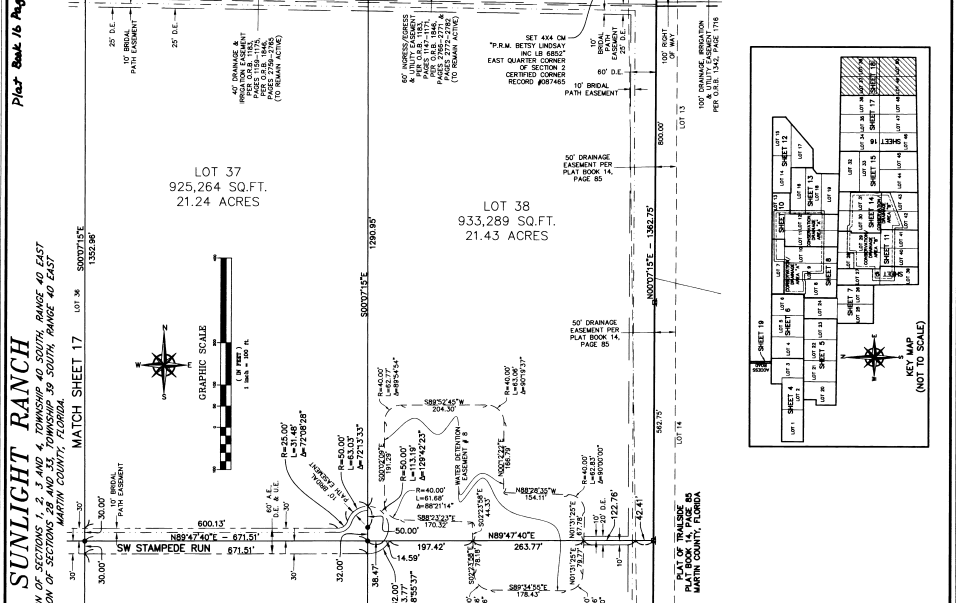
LOT 96

LOT 97

LOT 98

LOT 99

LOT 100



LEGEND

O INDICATES NO. 3 (5/8") IRON AND CAP
 "B" IS 1/8" UNLESS OTHERWISE NOTED
 □ WITH ALUMINUM ZINC STAMPED IDENTIFICATION
 □ WITH ALUMINUM ZINC STAMPED IDENTIFICATION
 □ WITH ALUMINUM ZINC STAMPED IDENTIFICATION
 □ WITH ALUMINUM ZINC STAMPED IDENTIFICATION

① INDICATES ADDRESS ALONG MAIL R. NUMBER
 "N" IS NORTH PERMANENT CONTROL POINT
 "S" IS SOUTH PERMANENT CONTROL POINT
 "E" IS EAST PERMANENT CONTROL POINT
 "W" IS WEST PERMANENT CONTROL POINT

A.L. INDICATES ACCESS EASEMENT
 B.B. INDICATES BOUNDARY BOUNDARY
 C.C. INDICATES CORNER CORNER
 D.D. INDICATES DRAINAGE EASEMENT
 E.E. INDICATES EASEMENT
 F.F. INDICATES FENCE FENCE
 G.G. INDICATES GROUND GROUND
 H.H. INDICATES HOLE HOLE
 I.I. INDICATES IRON IRON
 J.J. INDICATES JOINT JOINT
 K.K. INDICATES KICK KICK
 L.L. INDICATES LAMP LAMP
 M.M. INDICATES MARK MARK
 N.N. INDICATES NORTH NORTH
 O.O. INDICATES OIL OIL
 P.P. INDICATES PERMANENT PERMANENT
 Q.Q. INDICATES QUARTER QUARTER
 R.R. INDICATES RAIL RAIL
 S.S. INDICATES SOUTH SOUTH
 T.T. INDICATES TIE TIE
 U.U. INDICATES UTILITY UTILITY
 V.V. INDICATES VENT VENT
 W.W. INDICATES WEST WEST

GENERAL NOTES

A. THE LACK OF MAINTENANCE EASEMENTS AND DRAINAGE EASEMENTS AROUND CONCENTRATION/PARKING AREAS A, B, C, D, E, F, G, H, I, J, K, L, M, N, O, P, Q, R, S, T, U, V, W, X, Y, Z, AA, AB, AC, AD, AE, AF, AG, AH, AI, AJ, AK, AL, AM, AN, AO, AP, AQ, AR, AS, AT, AU, AV, AW, AX, AY, AZ, BA, BB, BC, BD, BE, BF, BG, BH, BI, BJ, BK, BL, BM, BN, BO, BP, BQ, BR, BS, BT, BU, BV, BW, BX, BY, BZ, CA, CB, CC, CD, CE, CF, CG, CH, CI, CJ, CK, CL, CM, CN, CO, CP, CQ, CR, CS, CT, CU, CV, CW, CX, CY, CZ, DA, DB, DC, DD, DE, DF, DG, DH, DI, DJ, DK, DL, DM, DN, DO, DP, DQ, DR, DS, DT, DU, DV, DW, DX, DY, DZ, EA, EB, EC, ED, EE, EF, EG, EH, EI, EJ, EK, EL, EM, EN, EO, EP, EQ, ER, ES, ET, EU, EV, EW, EX, EY, EZ, FA, FB, FC, FD, FE, FF, FG, FH, FI, FJ, FK, FL, FM, FN, FO, FP, FQ, FR, FS, FT, FU, FV, FW, FX, FY, FZ, GA, GB, GC, GD, GE, GF, GG, GH, GI, GJ, GK, GL, GM, GN, GO, GP, GQ, GR, GS, GT, GU, GV, GW, GX, GY, GZ, HA, HB, HC, HD, HE, HF, HG, HH, HI, HJ, HK, HL, HM, HN, HO, HP, HQ, HR, HS, HT, HU, HV, HW, HX, HY, HZ, IA, IB, IC, ID, IE, IF, IG, IH, II, IJ, IK, IL, IM, IN, IO, IP, IQ, IR, IS, IT, IU, IV, IW, IX, IY, IZ, JA, JB, JC, JD, JE, JF, JG, JH, JI, JJ, JK, JL, JM, JN, JO, JP, JQ, JR, JS, JT, JU, JV, JW, JX, JY, JZ, KA, KB, KC, KD, KE, KF, KG, KH, KI, KJ, KK, KL, KM, KN, KO, KP, KQ, KR, KS, KT, KU, KV, KW, KX, KY, KZ, LA, LB, LC, LD, LE, LF, LG, LH, LI, LJ, LK, LL, LM, LN, LO, LP, LQ, LR, LS, LT, LU, LV, LW, LX, LY, LZ, MA, MB, MC, MD, ME, MF, MG, MH, MI, MJ, MK, ML, MM, MN, MO, MP, MQ, MR, MS, MT, MU, MV, MW, MX, MY, MZ, NA, NB, NC, ND, NE, NF, NG, NH, NI, NJ, NK, NL, NM, NN, NO, NP, NQ, NR, NS, NT, NU, NV, NW, NX, NY, NZ, OA, OB, OC, OD, OE, OF, OG, OH, OI, OJ, OK, OL, OM, ON, OO, OP, OQ, OR, OS, OT, OU, OV, OW, OX, OY, OZ, PA, PB, PC, PD, PE, PF, PG, PH, PI, PJ, PK, PL, PM, PN, PO, PP, PQ, PR, PS, PT, PU, PV, PW, PX, PY, PZ, QA, QB, QC, QD, QE, QF, QG, QH, QI, QJ, QK, QL, QM, QN, QO, QP, QQ, QR, QS, QT, QU, QV, QW, QX, QY, QZ, RA, RB, RC, RD, RE, RF, RG, RH, RI, RJ, RK, RL, RM, RN, RO, RP, RQ, RR, RS, RT, RU, RV, RW, RX, RY, RZ, SA, SB, SC, SD, SE, SF, SG, SH, SI, SJ, SK, SL, SM, SN, SO, SP, SQ, SR, SS, ST, SU, SV, SW, SX, SY, SZ, TA, TB, TC, TD, TE, TF, TG, TH, TI, TJ, TK, TL, TM, TN, TO, TP, TQ, TR, TS, TT, TU, TV, TW, TX, TY, TZ, UA, UB, UC, UD, UE, UF, UG, UH, UI, UJ, UK, UL, UM, UN, UO, UP, UQ, UR, US, UT, UY, UZ, VA, VB, VC, VD, VE, VF, VG, VH, VI, VJ, VK, VL, VM, VN, VO, VP, VQ, VR, VS, VT, VU, VV, VW, VX, VY, VZ, WA, WB, WC, WD, WE, WF, WG, WH, WI, WJ, WK, WL, WM, WN, WO, WP, WQ, WR, WS, WT, WU, WV, WW, WX, WY, WZ, XA, XB, XC, XD, XE, XF, XG, XH, XI, XJ, XK, XL, XM, XN, XO, XP, XQ, XR, XS, XT, XU, XV, XW, XX, XY, XZ, YA, YB, YC, YD, YE, YF, YG, YH, YI, YJ, YK, YL, YM, YN, YO, YP, YQ, YR, YS, YT, YU, YV, YW, YX, YZ, ZA, ZB, ZC, ZD, ZE, ZF, ZG, ZH, ZI, ZJ, ZK, ZL, ZM, ZN, ZO, ZP, ZQ, ZR, ZS, ZT, ZU, ZV, ZW, ZX, ZY, ZZ

B. BETSY LINDSAY, INC.
 SURVEYING AND MAPPING
 760 W. JACK JAMES DRIVE SUITE 6000
 OPAUCHA, FLORIDA 32067
 (904) 261-1111
 (904) 261-1112
 (904) 261-1113
 (904) 261-1114
 (904) 261-1115
 (904) 261-1116
 (904) 261-1117
 (904) 261-1118
 (904) 261-1119
 (904) 261-1120

SUNLIGHT RANCH
 SHEET 18 OF 18

