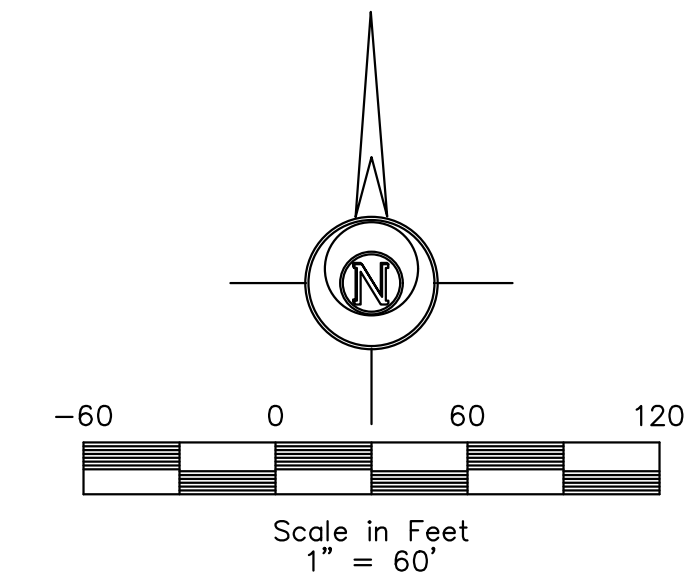
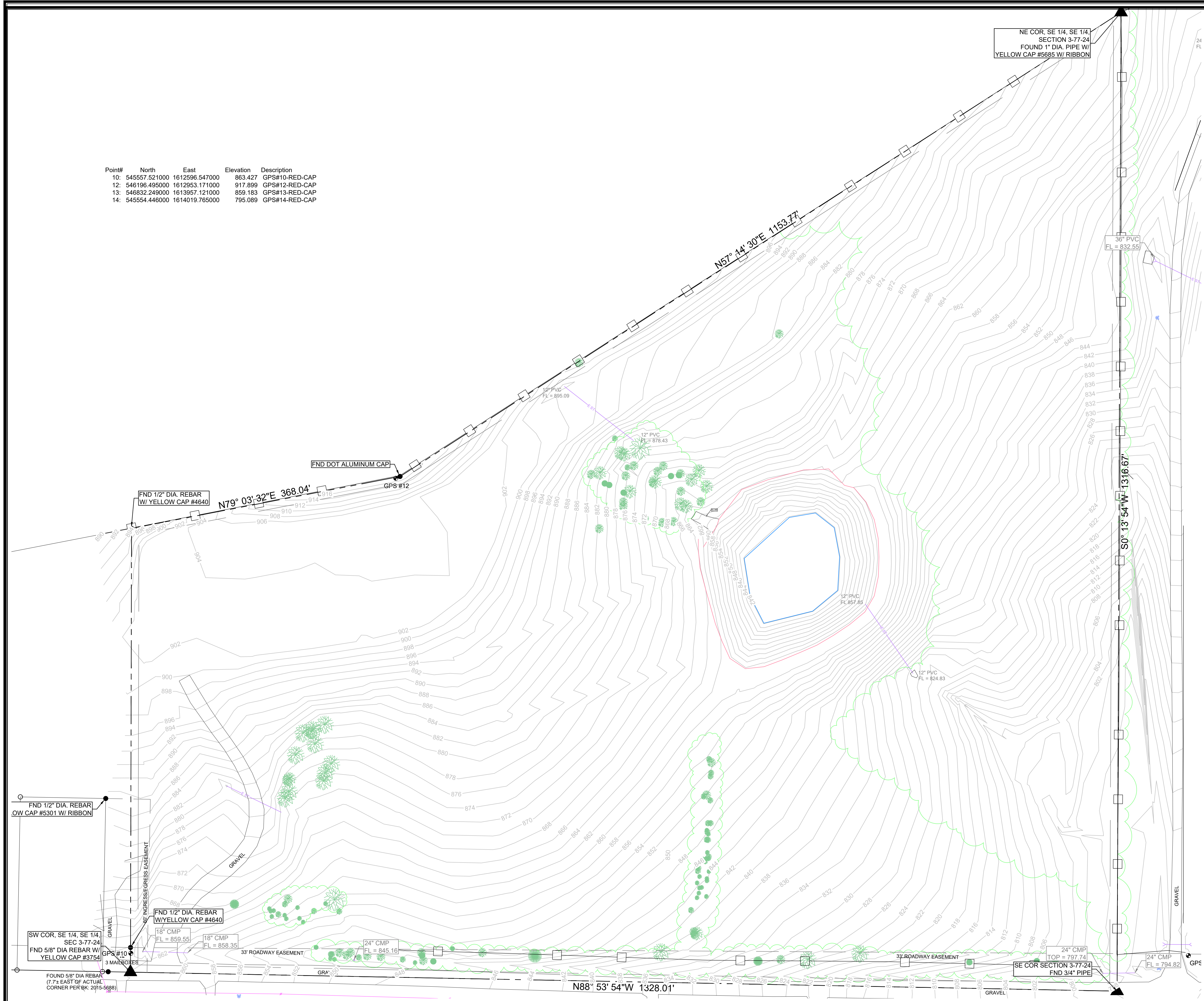


Point#	North	East	Elevation	Description
10	545557.521000	1612596.547000	863.427	GPS#10-RED-CAP
12	546196.495000	1612953.171000	917.899	GPS#12-RED-CAP
13	546832.249000	1613957.121000	859.183	GPS#13-RED-CAP
14	545554.446000	1614019.765000	795.089	GPS#14-RED-CAP



LEGEND:

+/-	MORE OR LESS	⊙	ELEC. MANHOLE	
F.F.	FINISHED FLOOR	⊙	SANITARY SEWER MANHOLE	
123.45G	GUTTER ELEVATION	⊙	STORM SEWER MANHOLE	
123.45TC	TOP OF CURB ELEVATION	⊙	TRAFFIC MANHOLE	
123.45/123.45	EXISTING/ PROPOSED ELEVATION	⊙	CLEANOUT	
FL	FLOWLINE ELEVATION	⊙	DOWNSPOUT	
⊙	CONTROL POINT	⊙	AREA INTAKE	
○	CALCULATED CORNER	⊙	SINGLE INTAKE	
●	FOUND CORNER	⊙	THROAT INTAKE	
⊙	CALCULATED SECTION CORNER	⊙	FLARED END SECTION	
⊙	FOUND SECTION CORNER	⊙	GAS VALVE	
▲	PARKING SPACE	⊙	FIRE HYDRANT	
▲	SIGN	⊙	WATER VALVE	
▲	STREET LIGHT	⊙	P XX	PROPOSED UTILITY LINE
▲	POWER POLE	⊙	E XX	EXISTING UTILITY LINE
▲	LIGHT POLE	⊙	CATV	CABLE TELEVISION
▲	AREA LIGHT	⊙	FO	FIBER OPTIC
▲	GUY ANCHOR	⊙	GAS	GAS LINE
▲	TEL. JUNCTION BOX	⊙	OHE	OVERHEAD ELEC.
▲	ELEC. TRANSFORMER	⊙	OHT	OVERHEAD TEL.
▲	ELEC. METER	⊙	SS	SANITARY SEWER
▲	ELEC. BOX	⊙	ST	STORM SEWER
▲	ELEC. VAULT	⊙	UGE	UNDERGROUND ELEC.
▲	FIBER OPTIC VAULT	⊙	UGT	UNDERGROUND TEL.
▲	GAS METER	⊙	W	WATER
▲	CABLE TV JUNCTION BOX	⊙	---	FENCE LINE
▲	WATER METER	⊙		

P ELDS DESIGN SERVICES

Architecture | Engineering | Surveying

2323 Dixon Street, Des Moines, Iowa 50316 | PO Box 4626, Des Moines, Iowa 50305 | Ph: 515.265.8196

PRELIMINARY

DATE: 1.24.2022	SCALE: 1"=60'	REVISION: 1	DRAWING NO: C-003
DRAWN BY: B. SHORT		LATEST REVISION: 1.24.2022	
<p>FILE PATH: J:\2021 Projects\21-168 - Site Plan for Wedding Center and Winery - Scott and Angie Wisel\Engineering\SC-003.TPO SHEET Template</p>			