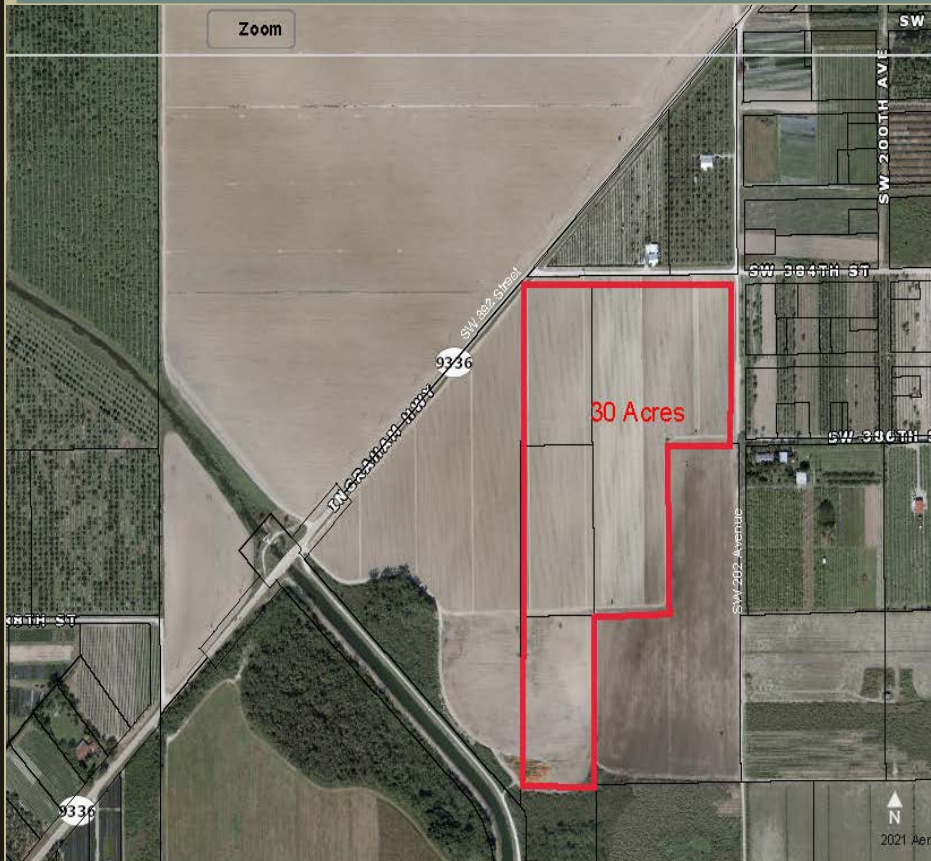




**RIEDER REALTY,  
REALTOR**

# 30 ± Acres FOR SALE

Miami-Dade County, Florida



**LOCATION:** Corner of SW 384<sup>th</sup> St &  
SW 392<sup>nd</sup> Street (Ingraham Highway)  
**PRICE:** \$2,700,000.00 (\$90,000.00 per Acre)



**Rieder Realty, Realtor®**  
9990 SW 77<sup>th</sup> Avenue, Suite 300  
Miami, Florida 33156  
Telephone: (305) 274-8866  
Cellular: (305) 467-3154  
Email: [brieder23@hotmail.com](mailto:brieder23@hotmail.com)  
[www.riederrealty.com](http://www.riederrealty.com)

Contact Bobby Rieder For More Information

## DESCRIPTION:

30 +/- Acres  
Prime Farm Land.  
Good Rad  
Frontage on SW  
384<sup>th</sup> Street.  
Property has Been  
Farmed. The  
Property is Zoned  
Agricultural and  
Has an  
Agricultural  
Exemption. The  
Zoning Allows for  
1 Home per 5  
Acres. Suitable for  
Row Crops,  
Grove, or Nursery.

Note: This offering subject to errors, omissions, prior sale or withdrawal without notice