



FARM & RANCH

RARE OPPORTUNITY IN PALO PINTO COUNTY

TBD HWY 281, Tract 3 – Mineral Wells, TX



STEPHEN
REICH GROUP
WILLIAMS TREW REAL ESTATE

Williamstrew[★]

A DIVISION OF EBBY HALLIDAY REAL ESTATE, INC.

LISTED BY **STEPHEN REICH GROUP** OF WILLIAMS TREW REAL ESTATE

PROPERTY SUMMARY

DESCRIPTION

Rare opportunity in Palo Pinto County to own a large tract with Santo Water. These tracts feature dramatic elevation changes with breathtaking views. Elevation range is from 1040 to 790 feet. Mature hardwoods with scattered Junipers and large Palo Pinto County boulders along with abundant wildlife make this property ideal for building the home of your dreams. Highway 281 frontage just minutes north of Interstate 20 makes this location ideal for everyone. Acreage ranges from 30 to 100 with tracts that have ponds, creeks, and one with a large metal barn.

LOCATION

CITY Mineral Wells
County Palo Pinto
Schools Santo ISD

Driving Directions From I 20 go North on Hwy 281 5.7 miles. Signage on the right.

OFFER SUMMARY

List Price \$1,050,000
Lot Size 100 acres
Utilities Co-op Water

HIGHLIGHTS

• 100 ACRES

• HIGHWAY 281 FRONTAGE

• ADDITIONAL ACREAGE AVAILABLE

• ACREAGE RANGES FROM 30-100 ACRES

• 1040' TO 790' ELEVATION RANGE

• PONDS, CREEKS & ONE TRACT W/METAL BLDG

LISTING PRESENTED BY:



STEPHEN REICH
817-597-8884

stephen.reich@williamstrew.com



WilliamsTrew 
A DIVISION OF EBBY HALLIDAY REAL ESTATE, INC.

TAMMY ROKUS
817-694-8019

tammy.rokus@williamstrew.com



PARKER COUNTY OFFICE
400 Shops Boulevard, Ste. 200
Willow Park, TX 76087

FARM & RANCH • RESIDENTIAL • COMMERCIAL-DEVELOPMENT • LAND

PROPERTY PHOTOS



STEPHEN REICH – 817.597.8884
TAMMY ROKUS – 817.694.8019



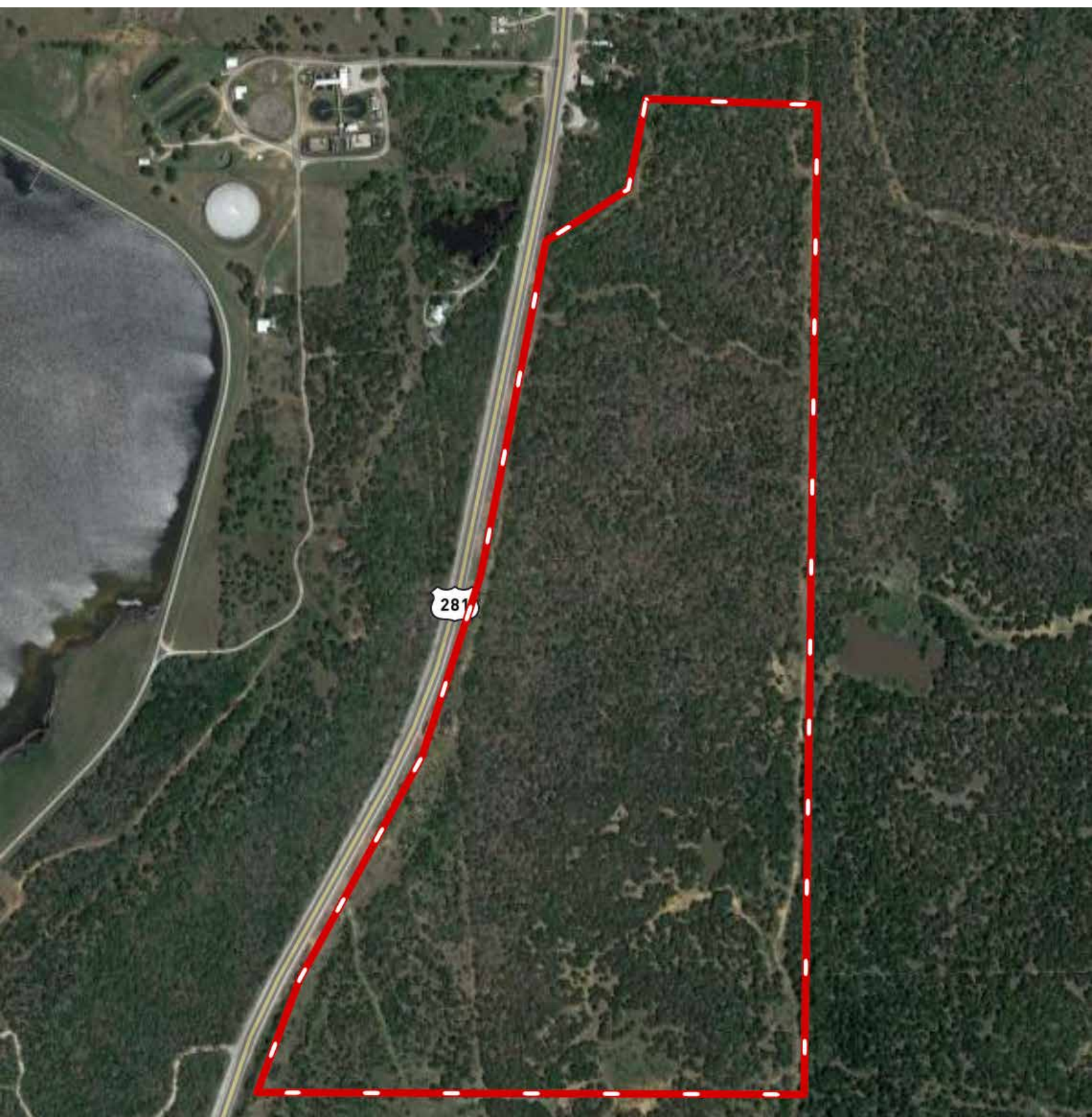
PROPERTY PHOTOS



STEPHEN REICH – 817.597.8884
TAMMY ROKUS – 817.694.8019



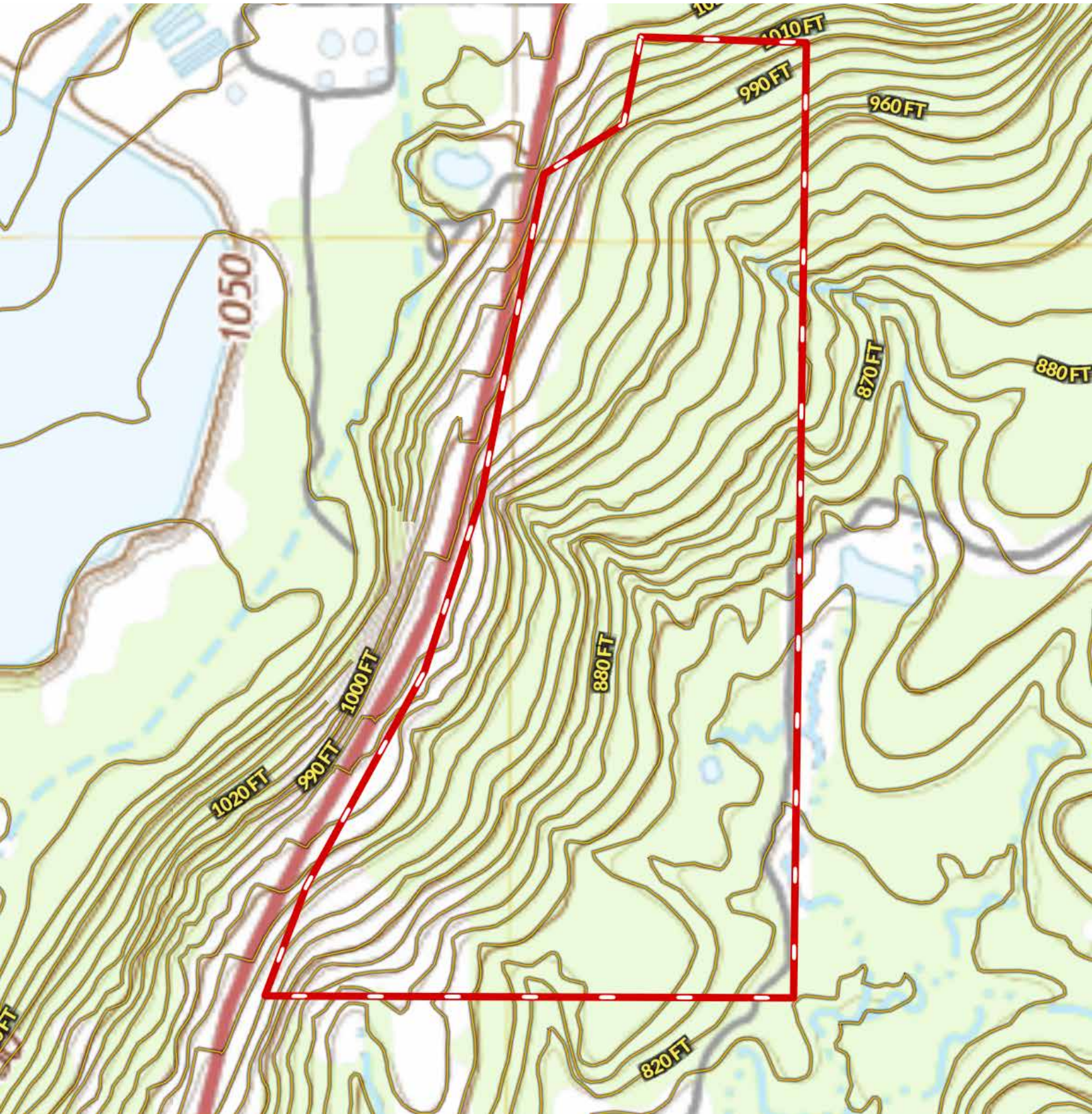
AERIAL MAP



STEPHEN REICH – 817.597.8884
TAMMY ROKUS – 817.694.8019



CONTOUR LINES & FLOODPLAIN



STEPHEN REICH – 817.597.8884
TAMMY ROKUS – 817.694.8019

